

Converting Colors

Hex(E0C6CC)

Have a look what the booklet for
Hex(E0C6CC) contains.

Hex(E0C6CC)	3
<i>Conversions</i>	4
<i>Details</i>	6
<i>Harmonies</i>	11
<i>Previews</i>	23
<i>Color Blindness Simulation</i>	26
<i>CSS Examples</i>	29

Color

Hex(E0C6CC)

Conversions

Conversions Part 1

Format	Color
Hex	E0C6CC
RGB	224, 198, 204
RGB Percent	88%, 78%, 80%
CMY	0.1216, 0.2235, 0.2000
CMYK	0.00, 0.12, 0.09, 0.12
HSL	346°, 30%, 83%
HSV	346°, 12%, 88%
XYZ	61.8336, 60.5951, 65.5638
YIQ	206.4580, 13.5700, 7.3780

Conversions

Conversions Part 2

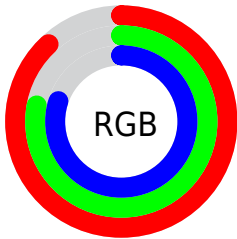
Format	Color
RYB	224, 198, 204
Decimal	14730956
CIELab	82.16, 10.14, 0.35
CIELCh	82, 10.144, 2.004
Yxy	60.5951, 0.3289, 0.3223
Android (android.graphics.Color)	4292921036 (0xFFE0C6CC)
YUV	206.4580, -1.2118, 15.3843
Hunter-Lab	77.8429, 5.5646, 4.5525

Details

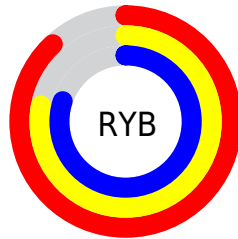
The Hex color **E0C6CC** is a light color, and the websafe version is hex **CCCCCC**. A complement of this color would be **C6E0DA**, and the grayscale version is **CECECE**.

A 20% lighter version of the original color is **FFFFFF**, and **A99096** is the 20% darker color. If you saturate the color by 10%, you get **E0B0BB**, and if you desaturate by 10%, it is **E0DCDD**.

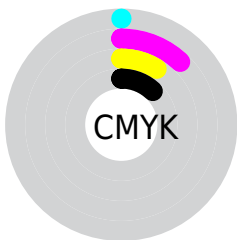
Distribution



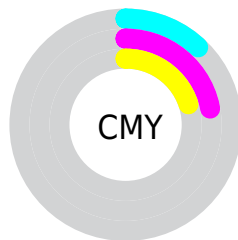
- Red (88%)
- Green (78%)
- Blue (80%)



- Red (88%)
- Yellow (78%)
- Blue (80%)



- Cyan (0%)
- Magenta (12%)
- Yellow (9%)
- Black (12%)



- Cyan (12%)
- Magenta (22%)
- Yellow (20%)

Brightness & Saturation Gradients

These gradients show how the Hex color E0C6CC changes by changing the brightness by 10 percent. The first figure shows a shift by +10% for each color and the second figure -10%.

Similar to the brightness gradients but the following saturation gradients show a change of the Hex color E0C6CC by changing the saturation by 10% instead.

 E0C6CC

FFFFFF

 E0C6CC

 C4ABB1

 A99096

 8E767C

 745E63

 5C464B

 443035

 2D1B20

 1A0007

 000000

 E0C6CC

 E0C6CC

 E0B0BB

 E0DCDD

 E099AA

 E0F3EE

 E08398

 E0FFFF

 E06C87

 E05676

 E04065

 E02953

 E01342

 E00034

Harmonies

Analogous

The Analogous color harmony consists of three colors that are next to each other on the color wheel.



DAC7D5



E0C6CC



E1C7C3

Triad

The Triadic color harmony groups three colors that are evenly spaced from another and form a triangle on the color wheel.



E0C6CC



C9CFBC



BAD0DD

Complementary

The Complementary color scheme is a pair of colors which are on the opposite of each other on the color wheel.



E0C6CC



C6E0DA

Split Complementary

Split-complementary colors differ from the complementary color scheme. The scheme consists of three colors, the original color and two neighbors of the complement color.



B5D2D6



E0C6CC



BED1C3

Square

The Square scheme is like the rectangle color scheme, but the four colors are evenly spaced on the color wheel.



E0C6CC



D4CCB9



B7D2CD



C3CDDF

Rectangle

The Rectangle color scheme consists of four colors that form a rectangle on the color wheel.



E0C6CC



DFC8BE



B7D2CD



B7D1DB

Sweetspot

The Sweet Spot groups the original color and five complimentary colors.



E0C6CC



FFF7F9



DAC6E0



807A7C



000000



808080

Same Dimension

The Same Dimension uses a secret algorithm to generate beautiful new colors.



E0C6CC



FFDBE4



E0CDC6



706568



B00029



30000B

Inverse Universe

The Inverse Universe completely reimagines the original color for something new.



E0C6CC



FFDBE4



C6D9E0



706568



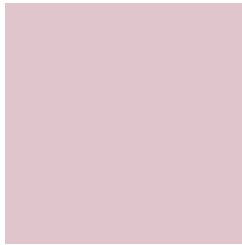
B00029



30000B

Previews

White Background



This preview shows how the Hex color E0C6CC looks on a white background.

Color Contrast Check

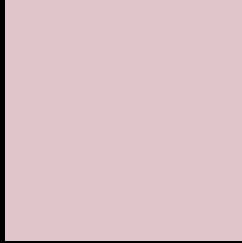
Large Text (above 18pt) WCAG AA × Fail

Any Text WCAG AA × Fail

Large Text (above 18pt) WCAG AAA × Fail

Any Text WCAG AAA × Fail

Black Background



This preview shows how the Hex color E0C6CC looks on a black background.

Color Contrast Check

Large Text (above 18pt) WCAG AA ✓ Pass

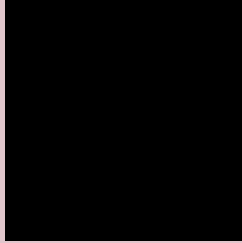
Any Text WCAG AA ✓ Pass

Large Text (above 18pt) WCAG AAA ✓ Pass

Any Text WCAG AAA ✓ Pass

If you want to check with other color combinations, try the [Color Contrast Checker](#).

Hex E0C6CC Background



This preview shows how black text looks on a background with the Hex color E0C6CC.



This preview shows how white text looks on a background with the Hex color E0C6CC.

Color Blindness Simulation

Color vision deficiency is a very complex topic, and I could not describe the different causes any better than Wikipedia does, so if you want to learn more, you should check out their [article about color blindness](#).

Dichromacy





Tritanopia
E1C5D4

Trichromacy



Original Color
E0C6CC

Protanomaly
D5C9CE

Deuteranomaly
E0C6CC

Tritanomaly
E1C5D1

Monochromacy



Original Color
E0C6CC

Achromatopsia
CECECE

Achromatomaly
D5CBCD

CSS Examples

Text

The CSS property to change the color of the text to Hex E0C6CC is called "color". The color property can be set on classes, ids or directly on the HTML element.

This example shows how text in the color #E0C6CC looks like.

```
.text, #text, p{  
    color:#E0C6CC  
}
```

If you want to add a text shadow in that color use the text-shadow property, you can generate a text shadow directly with our [CSS Text Shadow Generator](#).

Here you see how black text with a 4 pixel #E0C6CC colored shadow looks like.

```
.shadow{ text-shadow: 4px 4px 2px #E0C6CC  
}
```

Border

The CSS property to change the border of an element to Hex E0C6CC is called "border". The border property can be set on classes, ids or directly on the HTML element.

This example shows the color as border, it can be applied via the CSS property "border" or "border-color".

```
.border, #border, table{ border:4px solid  
#E0C6CC }
```

If only the border color should be changed use the property `border-color`.

```
.border{ border-color:#E0C6CC }
```

If you want to add a box shadow in that color use:

Here you see how a box with a 4 pixel #E0C6CC colored shadow looks like.

```
.boxshadow{ -moz-box-shadow:4px 4px 4px  
4px #E0C6CC; -webkit-box-shadow:4px 4px  
4px 4px #E0C6CC; box-shadow:4px 4px 4px  
4px #E0C6CC }
```

Background

The CSS property to change the background color of an element to Hex E0C6CC is called "background". The background property can be set on classes, ids or directly on the HTML element.

```
.background, #background, body{  
background:#E0C6CC }
```

If only the background color should be changed can be used:

```
.background{ background-color:#E0C6CC }
```

This example shows the color as background, it is applied via the CSS property "background".

To optimize and compress your CSS code, you can use our [online CSS compressor and optimizer](#) based on csstidy. If you want to create a linear or radial gradient as background or border, check our [CSS Gradient Generator](#).

Hey! You found this booklet interesting? Support Converting Colors with the new Membership Option!

The pro membership hides all ads, plus gives you double the colors in the color bucket, and more awesome pro features!

[Learn more, Memberships starting at \\$2.50/m!](#)

**Follow me
on Twitter!**

@ConvertingColor