

# Converting Colors

Hex(E0C7B8)

Have a look what the booklet for  
Hex(E0C7B8) contains.

<b>Hex(E0C7B8)</b> .....	3
<i><b>Conversions</b></i> .....	4
<i><b>Details</b></i> .....	6
<i><b>Harmonies</b></i> .....	11
<i><b>Previews</b></i> .....	23
<i><b>Color Blindness Simulation</b></i> .....	26
<i><b>CSS Examples</b></i> .....	29

# **Color**

**Hex(E0C7B8)**

# Conversions

## Conversions Part 1

Format	Color
Hex	E0C7B8
RGB	224, 199, 184
RGB Percent	88%, 78%, 72%
CMY	0.1216, 0.2196, 0.2784
CMYK	0.00, 0.11, 0.18, 0.12
HSL	23°, 39%, 80%
HSV	23°, 18%, 88%
XYZ	59.8156, 60.1548, 53.8058
YIQ	204.7650, 19.7150, 0.6350

# Conversions

## Conversions Part 2

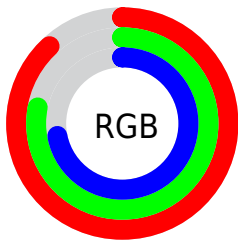
<b>Format</b>	<b>Color</b>
<b>R<sub>YB</sub></b>	224, 208, 184
Decimal	14731192
CIE <sub>Lab</sub>	81.92, 6.40, 10.71
CIE <sub>LCh</sub>	82, 12.478, 59.145
Yxy	60.1548, 0.3442, 0.3462
Android (android.graphics.Color)	4292921272 (0xFFE0C7B8)
YUV	204.7650, -10.2371, 16.8691
Hunter-Lab	77.5595, 1.9339, 13.1601

# Details

The Hex color **E0C7B8** is a light color, and the websafe version is hex **CCCCCC**. A complement of this color would be **B8D1E0**, and the grayscale version is **CDCDCD**.

A 20% lighter version of the original color is **FFFFFF0**, and **A89183** is the 20% darker color. If you saturate the color by 10%, you get **E0B9A2**, and if you desaturate by 10%, it is **E0D5CE**.

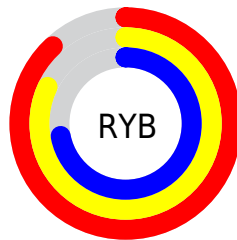
# Distribution



Red (88%)

Green (78%)

Blue (72%)



Red (88%)

Yellow (82%)

Blue (72%)

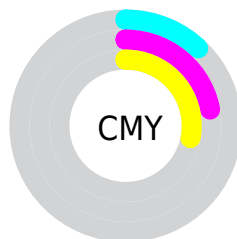


Cyan (0%)

Magenta (11%)

Yellow (18%)

Black (12%)



Cyan (12%)

Magenta (22%)

Yellow (28%)

# Brightness & Saturation Gradients

These gradients show how the Hex color E0C7B8 changes by changing the brightness by 10 percent. The first figure shows a shift by +10% for each color and the second figure -10%.

Similar to the brightness gradients but the following saturation gradients show a change of the Hex color E0C7B8 by changing the saturation by 10% instead.



 E0C7B8

FFFFFF

 FFFFF0

 E0C7B8

 C4AC9D

 A89183

 8E776A

 745F52

 5B473B

 433125

 2C1C10

 170200

 000000

 E0C7B8

 E0C7B8

 E0B9A2

 E0D5CE

 E0AB8B

 E0E3E5

 E09D75

 E0F1FB

 E08F5E

 E0FFFF

 E08148

 E07332

 E0651B

 E05705

 E05400

# Harmonies

## Analogous

The Analogous color harmony consists of three colors that are next to each other on the color wheel.



E5C4C1



E0C7B8



D6CBB4

# Triad

The Triadic color harmony groups three colors that are evenly spaced from another and form a triangle on the color wheel.



E0C7B8



B2D3CB



CEC9E0

# Complementary

The Complementary color scheme is a pair of colors which are on the opposite of each other on the color wheel.



E0C7B8



B8D1E0

# Split Complementary

Split-complementary colors differ from the complementary color scheme. The scheme consists of three colors, the original color and two neighbors of the complement color.



BFCDE3



E0C7B8



AED2D7

# Square

The Square scheme is like the rectangle color scheme, but the four colors are evenly spaced on the color wheel.



E0C7B8



BBD1BF



B3D0DF



DBC6D8

# Rectangle

The Rectangle color scheme consists of four colors that form a rectangle on the color wheel.



E0C7B8



CDCDB6



B3D0DF



C9CAE2



# Sweetspot

The Sweet Spot groups the original color and five complimentary colors.



E0C7B8



FFF7F2



E0B8D1



807B78



000000



808080

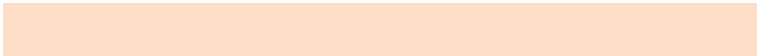


# Same Dimension

The Same Dimension uses a secret algorithm to generate beautiful new colors.



E0C7B8



FFDEC9



E0DBB8



706965



B04200



301200

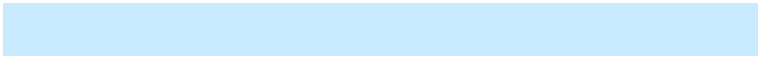


# Inverse Universe

The Inverse Universe completely reimagines the original color for something new.



B8D1E0



C9EBFF



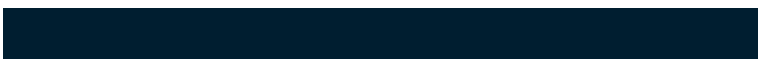
B8BDE0



656C70



006EB0

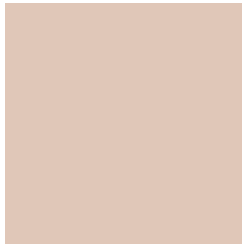


001E30



# Previews

## White Background



This preview shows how the Hex color E0C7B8 looks on a white background.

## Color Contrast Check

Large Text (above 18pt) WCAG AA × Fail

Any Text WCAG AA × Fail

Large Text (above 18pt) WCAG AAA × Fail

Any Text WCAG AAA × Fail

# Black Background



This preview shows how the Hex color E0C7B8 looks on a black background.

## Color Contrast Check

Large Text (above 18pt) WCAG AA ✓ Pass

Any Text WCAG AA ✓ Pass

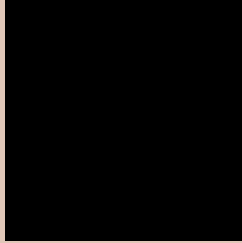
Large Text (above 18pt) WCAG AAA ✓ Pass

Any Text WCAG AAA ✓ Pass

If you want to check with other color combinations, try the [Color Contrast Checker](#).



## Hex E0C7B8 Background



This preview shows how black text looks on a background with the Hex color E0C7B8.



This preview shows how white text looks on a background with the Hex color E0C7B8.

# Color Blindness Simulation

Color vision deficiency is a very complex topic, and I could not describe the different causes any better than Wikipedia does, so if you want to learn more, you should check out their [article about color blindness](#).

## Dichromacy



**Original Color**  
E0C7B8

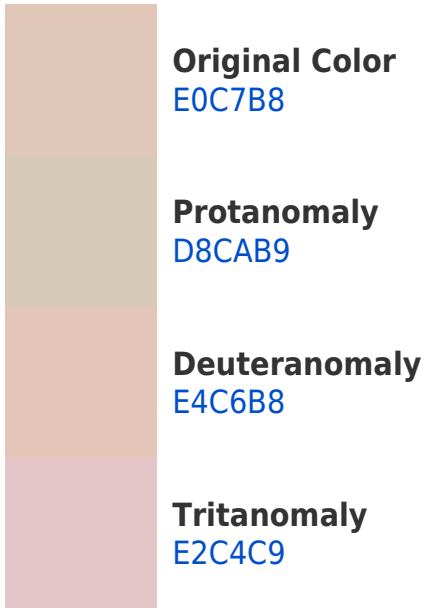
**Protanopia**  
D4CBBA

**Deuteranopia**  
E7C5B8

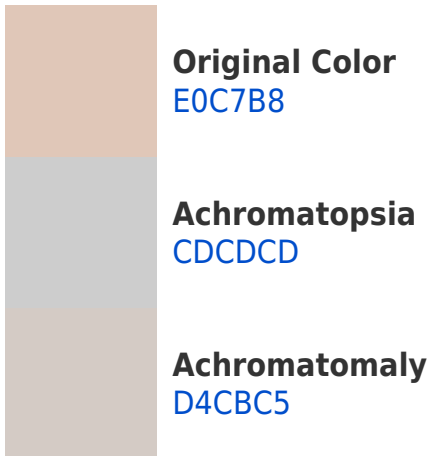


**Tritanopia**  
E3C3D2

# Trichromacy



# Monochromacy



# CSS Examples

## Text

The CSS property to change the color of the text to Hex E0C7B8 is called "color". The color property can be set on classes, ids or directly on the HTML element.

This example shows how text in the color #E0C7B8 looks like.

```
.text, #text, p{  
    color:#E0C7B8  
}
```

If you want to add a text shadow in that color use the text-shadow property, you can generate a text shadow directly with our [CSS Text Shadow Generator](#).

Here you see how black text with a 4 pixel #E0C7B8 colored shadow looks like.

```
.shadow{ text-shadow: 4px 4px 2px #E0C7B8  
}
```

## Border

The CSS property to change the border of an element to Hex E0C7B8 is called "border". The border property can be set on classes, ids or directly on the HTML element.

This example shows the color as border, it can be applied via the CSS property "border" or "border-color".

```
.border, #border, table{ border:4px solid  
#E0C7B8 }
```

If only the border color should be changed use the property `border-color`.

```
.border{ border-color:#E0C7B8 }
```

If you want to add a box shadow in that color use:

Here you see how a box with a 4 pixel #E0C7B8 colored shadow looks like.

```
.boxshadow{ -moz-box-shadow:4px 4px 4px  
4px #E0C7B8; -webkit-box-shadow:4px 4px  
4px 4px #E0C7B8; box-shadow:4px 4px 4px  
4px #E0C7B8 }
```

# Background

The CSS property to change the background color of an element to Hex E0C7B8 is called "background". The background property can be set on classes, ids or directly on the HTML element.

```
.background, #background, body{  
background:#E0C7B8 }
```

If only the background color should be changed can be used:

```
.background{ background-color:#E0C7B8 }
```

This example shows the color as background, it is applied via the CSS property "background".

To optimize and compress your CSS code, you can use our [online CSS compressor and optimizer](#) based on csstidy. If you want to create a linear or radial gradient as background or border, check our [CSS Gradient Generator](#).



Hey! You found this booklet interesting? Support Converting Colors with the new Membership Option!

The pro membership hides all ads, plus gives you double the colors in the color bucket, and more awesome pro features!

**[Learn more, Memberships starting at \\$2.50/m!](#)**

**Follow me  
on Twitter!**

@ConvertingColor