

# Converting Colors

Hex(E0C7CA)

Have a look what the booklet for  
Hex(E0C7CA) contains.

<b>Hex(E0C7CA)</b> .....	3
<b><i>Conversions</i></b> .....	4
<b><i>Details</i></b> .....	6
<b><i>Harmonies</i></b> .....	11
<b><i>Previews</i></b> .....	23
<b><i>Color Blindness Simulation</i></b> .....	26
<b><i>CSS Examples</i></b> .....	29

# **Color**

**Hex(E0C7CA)**

# Conversions

## Conversions Part 1

Format	Color
Hex	E0C7CA
RGB	224, 199, 202
RGB Percent	88%, 78%, 79%
CMY	0.1216, 0.2196, 0.2078
CMYK	0.00, 0.11, 0.10, 0.12
HSL	353°, 29%, 83%
HSV	353°, 11%, 88%
XYZ	61.8246, 60.9584, 64.3848
YIQ	206.8170, 13.9370, 6.2330

# Conversions

## Conversions Part 2

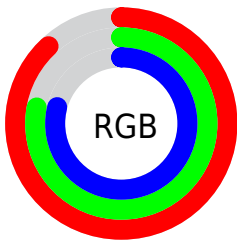
<b>Format</b>	<b>Color</b>
<a href="#">RYB</a>	<a href="#">224, 199, 202</a>
Decimal	<a href="#">14731210</a>
CIELab	<a href="#">82.36, 9.27, 1.71</a>
CIELCh	<a href="#">82, 9.429, 10.454</a>
Yxy	<a href="#">60.9584, 0.3303, 0.3257</a>
Android (android.graphics.Color)	<a href="#">4292921290</a> ( <a href="#">0xFFE0C7CA</a> )
YUV	<a href="#">206.8170, -2.3748, 15.0695</a>
Hunter-Lab	<a href="#">78.0759, 4.7129, 5.7600</a>

# Details

The Hex color **E0C7CA** is a light color, and the websafe version is hex **CCCCCC**. A complement of this color would be **C7E0DD**, and the grayscale version is **CFCFCF**.

A 20% lighter version of the original color is **FFFFFF**, and **A99194** is the 20% darker color. If you saturate the color by 10%, you get **E0B1B6**, and if you desaturate by 10%, it is **E0DDDE**.

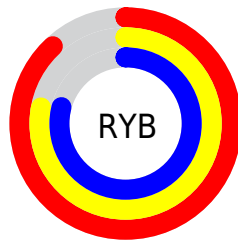
# Distribution



Red (88%)

Green (78%)

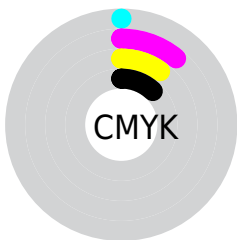
Blue (79%)



Red (88%)

Yellow (78%)

Blue (79%)

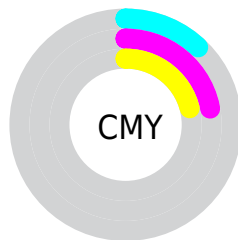


Cyan (0%)

Magenta (11%)

Yellow (10%)

Black (12%)



Cyan (12%)

Magenta (22%)

Yellow (21%)

# Brightness & Saturation Gradients

These gradients show how the Hex color E0C7CA changes by changing the brightness by 10 percent. The first figure shows a shift by +10% for each color and the second figure -10%.

Similar to the brightness gradients but the following saturation gradients show a change of the Hex color E0C7CA by changing the saturation by 10% instead.



 E0C7CA

FFFFFF

 E0C7CA

 C4ACAF

 A99194

 8E777A

 745F61

 5C474A

 443033

 2D1B1E

 1A0105

 000000

 E0C7CA

 E0C7CA

 E0B1B6

 E0DDDE

 E09AA3

 E0F4F1

 E0848F

 E0FFFF

 E06D7B

 E05767

 E04154

 E02A40

 E0142C

 E0001B

# Harmonies

## Analogous

The Analogous color harmony consists of three colors that are next to each other on the color wheel.



DBC8D3



E0C7CA



DFC8C2

# Triad

The Triadic color harmony groups three colors that are evenly spaced from another and form a triangle on the color wheel.



E0C7CA



C7D0BF



BECFDD

# Complementary

The Complementary color scheme is a pair of colors which are on the opposite of each other on the color wheel.



E0C7CA



C7E0DD

# Split Complementary

Split-complementary colors differ from the complementary color scheme. The scheme consists of three colors, the original color and two neighbors of the complement color.



B8D1D8



E0C7CA



BED2C7

# Square

The Square scheme is like the rectangle color scheme, but the four colors are evenly spaced on the color wheel.



E0C7CA



D1CDBC



B8D2D0



C8CDDE

# Rectangle

The Rectangle color scheme consists of four colors that form a rectangle on the color wheel.



E0C7CA



DCC9BE



B8D2D0



BBD0DC



# Sweetspot

The Sweet Spot groups the original color and five complimentary colors.



E0C7CA



FFF7F8



DDC7E0



807A7B



000000



808080



# Same Dimension

The Same Dimension uses a secret algorithm to generate beautiful new colors.



E0C7CA



FFDEE2



E0D0C7



706566



B00015



300006



# Inverse Universe

The Inverse Universe completely reimagines the original color for something new.



E0C7CA



FFDEE2



C7D7E0



706566



B00015

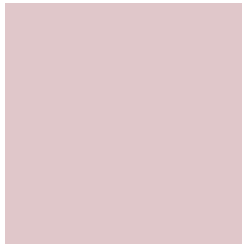


300006



# Previews

## White Background



This preview shows how the Hex color E0C7CA looks on a white background.

## Color Contrast Check

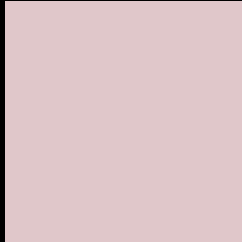
Large Text (above 18pt) WCAG AA × Fail

Any Text WCAG AA × Fail

Large Text (above 18pt) WCAG AAA × Fail

Any Text WCAG AAA × Fail

# Black Background



This preview shows how the Hex color E0C7CA looks on a black background.

## Color Contrast Check

Large Text (above 18pt) WCAG AA ✓ Pass

Any Text WCAG AA ✓ Pass

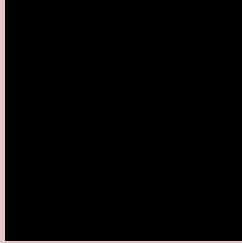
Large Text (above 18pt) WCAG AAA ✓ Pass

Any Text WCAG AAA ✓ Pass

If you want to check with other color combinations, try the [Color Contrast Checker](#).



## Hex E0C7CA Background



This preview shows how black text looks on a background with the Hex color E0C7CA.

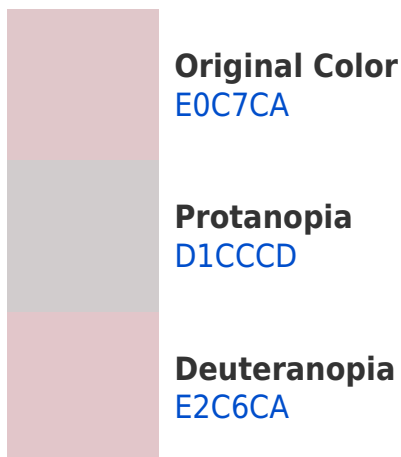


This preview shows how white text looks on a background with the Hex color E0C7CA.

# Color Blindness Simulation

Color vision deficiency is a very complex topic, and I could not describe the different causes any better than Wikipedia does, so if you want to learn more, you should check out their [article about color blindness](#).

## Dichromacy





**Tritanopia**  
E1C5D5

# Trichromacy



**Original Color**  
E0C7CA

**Protanomaly**  
D6CACC

**Deuteranomaly**  
E1C6CA

**Tritanomaly**  
E1C6D1

# Monochromacy



**Original Color**  
E0C7CA

**Achromatopsia**  
CFCFCF

**Achromatomaly**  
D5CCCD

# CSS Examples

## Text

The CSS property to change the color of the text to Hex E0C7CA is called "color". The color property can be set on classes, ids or directly on the HTML element.

This example shows how text in the color #E0C7CA looks like.

```
.text, #text, p{  
    color:#E0C7CA  
}
```

If you want to add a text shadow in that color use the text-shadow property, you can generate a text shadow directly with our [CSS Text Shadow Generator](#).

Here you see how black text with a 4 pixel #E0C7CA colored shadow looks like.

```
.shadow{ text-shadow: 4px 4px 2px #E0C7CA
}
```

## Border

The CSS property to change the border of an element to Hex E0C7CA is called "border". The border property can be set on classes, ids or directly on the HTML element.

This example shows the color as border, it can be applied via the CSS property "border" or "border-color".

```
.border, #border, table{ border:4px solid
#E0C7CA }
```

If only the border color should be changed use the property `border-color`.

```
.border{ border-color:#E0C7CA }
```

If you want to add a box shadow in that color use:

Here you see how a box with a 4 pixel #E0C7CA colored shadow looks like.

```
.boxshadow{ -moz-box-shadow:4px 4px 4px  
4px #E0C7CA; -webkit-box-shadow:4px 4px  
4px 4px #E0C7CA; box-shadow:4px 4px 4px  
4px #E0C7CA }
```

# Background

The CSS property to change the background color of an element to Hex E0C7CA is called "background". The background property can be set on classes, ids or directly on the HTML element.

```
.background, #background, body{  
background:#E0C7CA }
```

If only the background color should be changed can be used:

```
.background{ background-color:#E0C7CA }
```

This example shows the color as background, it is applied via the CSS property "background".

To optimize and compress your CSS code, you can use our [online CSS compressor and optimizer](#) based on csstidy. If you want to create a linear or radial gradient as background or border, check our [CSS Gradient Generator](#).



Hey! You found this booklet interesting? Support Converting Colors with the new Membership Option!

The pro membership hides all ads, plus gives you double the colors in the color bucket, and more awesome pro features!

**[Learn more, Memberships starting at \\$2.50/m!](#)**

**Follow me  
on Twitter!**

@ConvertingColor