

Converting Colors

Hex(E0C8BA)

Have a look what the booklet for
Hex(E0C8BA) contains.

Hex(E0C8BA)	3
<i>Conversions</i>	4
<i>Details</i>	6
<i>Harmonies</i>	11
<i>Previews</i>	23
<i>Color Blindness Simulation</i>	26
<i>CSS Examples</i>	29

Color

Hex(E0C8BA)

Conversions

Conversions Part 1

Format	Color
Hex	E0C8BA
RGB	224, 200, 186
RGB Percent	88%, 78%, 73%
CMY	0.1216, 0.2157, 0.2706
CMYK	0.00, 0.11, 0.17, 0.12
HSL	22°, 38%, 80%
HSV	22°, 17%, 88%
XYZ	60.2577, 60.7010, 54.9949
YIQ	205.5800, 18.7980, 0.7340

Conversions

Conversions Part 2

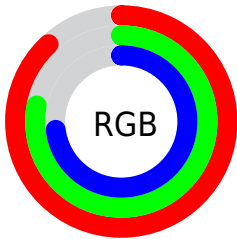
Format	Color
R_{YB}	224, 208, 186
Decimal	14731450
CIE _{Lab}	82.22, 6.18, 10.06
CIE _{LCh}	82, 11.810, 58.454
Yxy	60.7010, 0.3425, 0.3450
Android (android.graphics.Color)	4292921530 (0xFFE0C8BA)
YUV	205.5800, -9.6529, 16.1543
Hunter-Lab	77.9109, 1.7111, 12.6866

Details

The Hex color **E0C8BA** is a light color, and the websafe version is hex **CCCCCC**. A complement of this color would be **BAD2E0**, and the grayscale version is **CECECE**.

A 20% lighter version of the original color is **FFFFFF2**, and **A89285** is the 20% darker color. If you saturate the color by 10%, you get **E0BAA4**, and if you desaturate by 10%, it is **E0D6D0**.

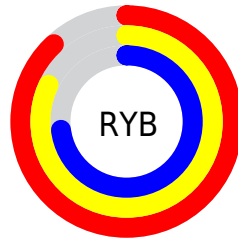
Distribution



Red (88%)

Green (78%)

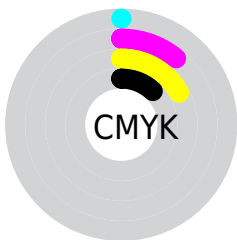
Blue (73%)



Red (88%)

Yellow (82%)

Blue (73%)

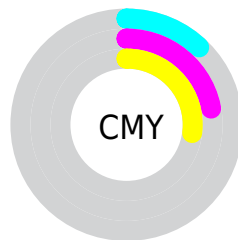


Cyan (0%)

Magenta (11%)

Yellow (17%)

Black (12%)



Cyan (12%)

Magenta (22%)

Yellow (27%)

Brightness & Saturation Gradients

These gradients show how the Hex color E0C8BA changes by changing the brightness by 10 percent. The first figure shows a shift by +10% for each color and the second figure -10%.

Similar to the brightness gradients but the following saturation gradients show a change of the Hex color E0C8BA by changing the saturation by 10% instead.

 E0C8BA

FFFFFF

 FFFFF2

 E0C8BA

 C4AD9F

 A89285

 8E786C

 746053

 5B483C

 433127

 2C1C12

 170300

 000000

 E0C8BA

 E0C8BA

 E0BAA4

 E0D6D0

 E0AC8D

 E0E4E7

 E09E77

 E0F2FD

 E08F60

 E0FFFF

 E0814A

 E07334

 E0651D

 E05707

 E05300

Harmonies

Analogous

The Analogous color harmony consists of three colors that are next to each other on the color wheel.



E5C6C2



E0C8BA



D6CBB7

Triad

The Triadic color harmony groups three colors that are evenly spaced from another and form a triangle on the color wheel.



E0C8BA



B4D3CB



CECAE0

Complementary

The Complementary color scheme is a pair of colors which are on the opposite of each other on the color wheel.



E0C8BA



BAD2E0

Split Complementary

Split-complementary colors differ from the complementary color scheme. The scheme consists of three colors, the original color and two neighbors of the complement color.



C0CEE2



E0C8BA



B1D3D7

Square

The Square scheme is like the rectangle color scheme, but the four colors are evenly spaced on the color wheel.



E0C8BA



BDD2C1



B5D1DF



DBC7D8

Rectangle

The Rectangle color scheme consists of four colors that form a rectangle on the color wheel.



E0C8BA



CECEB7



B5D1DF



C9CBE1

Sweetspot

The Sweet Spot groups the original color and five complimentary colors.



E0C8BA



FFF7F2



E0BAD2



807B78



000000



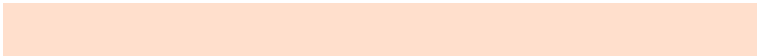
808080

Same Dimension

The Same Dimension uses a secret algorithm to generate beautiful new colors.



E0C8BA



FFDFCC



E0DBBA



706965



B04100



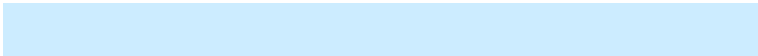
301200

Inverse Universe

The Inverse Universe completely reimagines the original color for something new.



BAD2E0



CCECFE



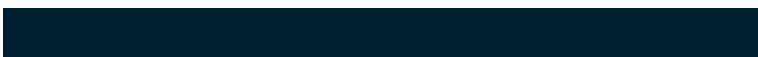
BABFE0



656C70



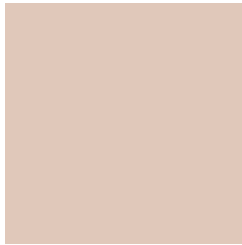
006FB0



001F30

Previews

White Background



This preview shows how the Hex color E0C8BA looks on a white background.

Color Contrast Check

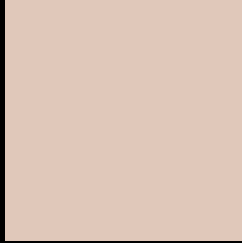
Large Text (above 18pt) WCAG AA × Fail

Any Text WCAG AA × Fail

Large Text (above 18pt) WCAG AAA × Fail

Any Text WCAG AAA × Fail

Black Background



This preview shows how the Hex color E0C8BA looks on a black background.

Color Contrast Check

Large Text (above 18pt) WCAG AA ✓ Pass

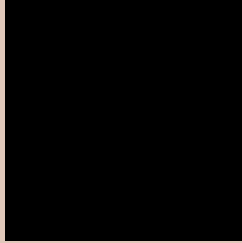
Any Text WCAG AA ✓ Pass

Large Text (above 18pt) WCAG AAA ✓ Pass

Any Text WCAG AAA ✓ Pass

If you want to check with other color combinations, try the [Color Contrast Checker](#).

Hex E0C8BA Background



This preview shows how black text looks on a background with the Hex color E0C8BA.

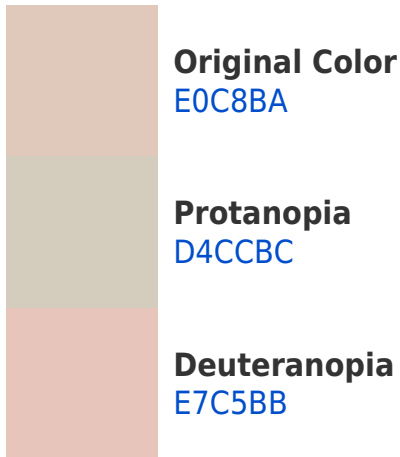


This preview shows how white text looks on a background with the Hex color E0C8BA.

Color Blindness Simulation

Color vision deficiency is a very complex topic, and I could not describe the different causes any better than Wikipedia does, so if you want to learn more, you should check out their [article about color blindness](#).

Dichromacy



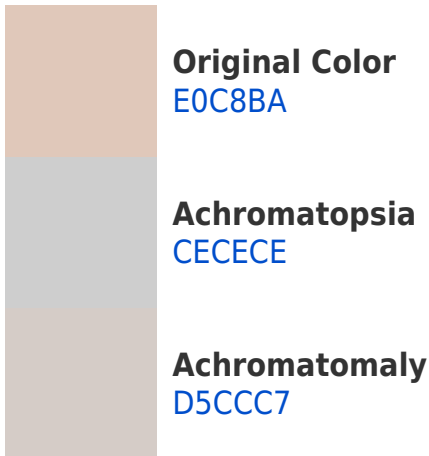


Tritanopia
E3C4D4

Trichromacy



Monochromacy



CSS Examples

Text

The CSS property to change the color of the text to Hex E0C8BA is called "color". The color property can be set on classes, ids or directly on the HTML element.

This example shows how text in the color #E0C8BA looks like.

```
.text, #text, p{  
    color:#E0C8BA  
}
```

If you want to add a text shadow in that color use the text-shadow property, you can generate a text shadow directly with our [CSS Text Shadow Generator](#).

Here you see how black text with a 4 pixel #E0C8BA colored shadow looks like.

```
.shadow{ text-shadow: 4px 4px 2px #E0C8BA
}
```

Border

The CSS property to change the border of an element to Hex E0C8BA is called "border". The border property can be set on classes, ids or directly on the HTML element.

This example shows the color as border, it can be applied via the CSS property "border" or "border-color".

```
.border, #border, table{ border:4px solid
#E0C8BA }
```

If only the border color should be changed use the property `border-color`.

```
.border{ border-color:#E0C8BA }
```

If you want to add a box shadow in that color use:

Here you see how a box with a 4 pixel #E0C8BA colored shadow looks like.

```
.boxshadow{ -moz-box-shadow:4px 4px 4px  
4px #E0C8BA; -webkit-box-shadow:4px 4px  
4px 4px #E0C8BA; box-shadow:4px 4px 4px  
4px #E0C8BA }
```

Background

The CSS property to change the background color of an element to Hex E0C8BA is called "background". The background property can be set on classes, ids or directly on the HTML element.

```
.background, #background, body{  
background:#E0C8BA }
```

If only the background color should be changed can be used:

```
.background{ background-color:#E0C8BA }
```

This example shows the color as background, it is applied via the CSS property "background".

To optimize and compress your CSS code, you can use our [online CSS compressor and optimizer](#) based on csstidy. If you want to create a linear or radial gradient as background or border, check our [CSS Gradient Generator](#).

Hey! You found this booklet interesting? Support Converting Colors with the new Membership Option!

The pro membership hides all ads, plus gives you double the colors in the color bucket, and more awesome pro features!

[Learn more, Memberships starting at \\$2.50/m!](#)

**Follow me
on Twitter!**

@ConvertingColor