

Converting Colors

Hex(E0C8C5)

Have a look what the booklet for
Hex(E0C8C5) contains.

Hex(E0C8C5)	3
<i>Conversions</i>	4
<i>Details</i>	6
<i>Harmonies</i>	11
<i>Previews</i>	23
<i>Color Blindness Simulation</i>	26
<i>CSS Examples</i>	29

Color

Hex(E0C8C5)

Conversions

Conversions Part 1

Format	Color
Hex	E0C8C5
RGB	224, 200, 197
RGB Percent	88%, 78%, 77%
CMY	0.1216, 0.2157, 0.2275
CMYK	0.00, 0.11, 0.12, 0.12
HSL	7°, 30%, 83%
HSV	7°, 12%, 88%
XYZ	61.4728, 61.1871, 61.3936
YIQ	206.8340, 15.2670, 4.1550

Conversions

Conversions Part 2

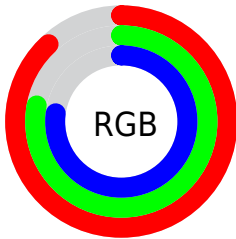
Format	Color
R _Y B	224, 200, 197
Decimal	14731461
CIE Lab	82.48, 7.92, 4.56
CIE LCh	82, 9.140, 29.951
Yxy	61.1871, 0.3340, 0.3324
Android (android.graphics.Color)	4292921541 (0xFFE0C8C5)
YUV	206.8340, -4.8482, 15.0546
Hunter-Lab	78.2222, 3.3898, 8.2210

Details

The Hex color **E0C8C5** is a light color, and the websafe version is hex **CCCCCC**. A complement of this color would be **C5DDE0**, and the grayscale version is **CFCFCF**.

A 20% lighter version of the original color is **FFFFFFE**, and **A9928F** is the 20% darker color. If you saturate the color by 10%, you get **E0B4AF**, and if you desaturate by 10%, it is **E0DCDB**.

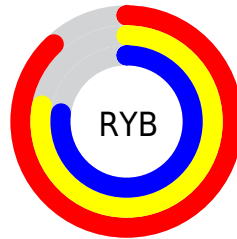
Distribution



Red (88%)

Green (78%)

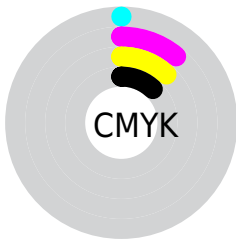
Blue (77%)



Red (88%)

Yellow (78%)

Blue (77%)

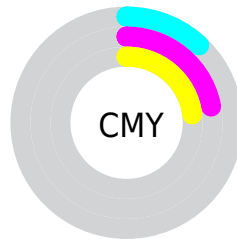


Cyan (0%)

Magenta (11%)

Yellow (12%)

Black (12%)



Cyan (12%)

Magenta (22%)

Yellow (23%)

Brightness & Saturation Gradients

These gradients show how the Hex color E0C8C5 changes by changing the brightness by 10 percent. The first figure shows a shift by +10% for each color and the second figure -10%.

Similar to the brightness gradients but the following saturation gradients show a change of the Hex color E0C8C5 by changing the saturation by 10% instead.

 E0C8C5

 E0C8C5

FFFFFF

 C4ADAA

FFFFFFE

 A9928F

 8E7876

 74605D

 5B4846

 44312F

 2D1C1A

 1A0200

 000000

 E0C8C5

 E0C8C5

 E0B4AF

 E0DCDB

 E0A098

 E0F0F2

 E08C82

 E0FFFF

 E0786B

 E06455

 E0513F

 E03D28

 E02912

 E01900

Harmonies

Analogous

The Analogous color harmony consists of three colors that are next to each other on the color wheel.



DFC8CE



E0C8C5



DCCABF

Triad

The Triadic color harmony groups three colors that are evenly spaced from another and form a triangle on the color wheel.



E0C8C5



C1D1C4



C5CEDE

Complementary

The Complementary color scheme is a pair of colors which are on the opposite of each other on the color wheel.



E0C8C5



C5DDE0

Split Complementary

Split-complementary colors differ from the complementary color scheme. The scheme consists of three colors, the original color and two neighbors of the complement color.



BCD0DC



E0C8C5



BAD2CD

Square

The Square scheme is like the rectangle color scheme, but the four colors are evenly spaced on the color wheel.



E0C8C5



CBCFBE



B8D2D5



CFCBDC

Rectangle

The Rectangle color scheme consists of four colors that form a rectangle on the color wheel.



E0C8C5



D8CCBD



B8D2D5



C1CFDE

Sweetspot

The Sweet Spot groups the original color and five complimentary colors.



E0C8C5



FFF6F5



E0C5DD



807A79



000000



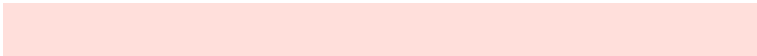
808080

Same Dimension

The Same Dimension uses a secret algorithm to generate beautiful new colors.



E0C8C5



FFDFDB



E0D5C5



706665



B01400



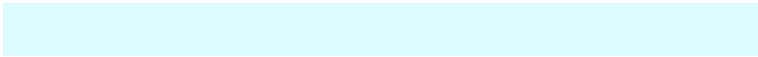
300500

Inverse Universe

The Inverse Universe completely reimagines the original color for something new.



C5DDE0



DBFBFF



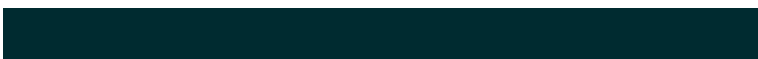
C5D0E0



656F70



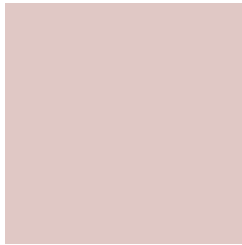
009CB0



002B30

Previews

White Background



This preview shows how the Hex color E0C8C5 looks on a white background.

Color Contrast Check

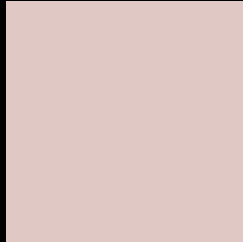
Large Text (above 18pt) WCAG AA × Fail

Any Text WCAG AA × Fail

Large Text (above 18pt) WCAG AAA × Fail

Any Text WCAG AAA × Fail

Black Background



This preview shows how the Hex color E0C8C5 looks on a black background.

Color Contrast Check

Large Text (above 18pt) WCAG AA ✓ Pass

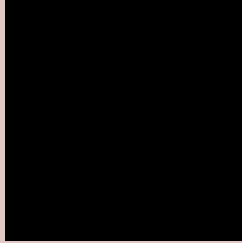
Any Text WCAG AA ✓ Pass

Large Text (above 18pt) WCAG AAA ✓ Pass

Any Text WCAG AAA ✓ Pass

If you want to check with other color combinations, try the [Color Contrast Checker](#).

Hex E0C8C5 Background



This preview shows how black text looks on a background with the Hex color E0C8C5.



This preview shows how white text looks on a background with the Hex color E0C8C5.

Color Blindness Simulation

Color vision deficiency is a very complex topic, and I could not describe the different causes any better than Wikipedia does, so if you want to learn more, you should check out their [article about color blindness](#).

Dichromacy



Original Color
E0C8C5

Protanopia
D2CCC7

Deuteranopia
E4C6C5



Tritanopia
E2C6D5

Trichromacy



Original Color
E0C8C5

Protanomaly
D7CBC6

Deuteranomaly
E3C7C5

Tritanomaly
E1C7CF

Monochromacy



Original Color
E0C8C5

Achromatopsia
CFCFCF

Achromatomaly
D5CCCB

CSS Examples

Text

The CSS property to change the color of the text to Hex E0C8C5 is called "color". The color property can be set on classes, ids or directly on the HTML element.

This example shows how text in the color #E0C8C5 looks like.

```
.text, #text, p{  
    color:#E0C8C5  
}
```

If you want to add a text shadow in that color use the text-shadow property, you can generate a text shadow directly with our [CSS Text Shadow Generator](#).

Here you see how black text with a 4 pixel #E0C8C5 colored shadow looks like.

```
.shadow{ text-shadow: 4px 4px 2px #E0C8C5
}
```

Border

The CSS property to change the border of an element to Hex E0C8C5 is called "border". The border property can be set on classes, ids or directly on the HTML element.

This example shows the color as border, it can be applied via the CSS property "border" or "border-color".

```
.border, #border, table{ border:4px solid
#E0C8C5 }
```

If only the border color should be changed use the property `border-color`.

```
.border{ border-color:#E0C8C5 }
```

If you want to add a box shadow in that color use:

Here you see how a box with a 4 pixel #E0C8C5 colored shadow looks like.

```
.boxshadow{ -moz-box-shadow:4px 4px 4px  
4px #E0C8C5; -webkit-box-shadow:4px 4px  
4px 4px #E0C8C5; box-shadow:4px 4px 4px  
4px #E0C8C5 }
```

Background

The CSS property to change the background color of an element to Hex E0C8C5 is called "background". The background property can be set on classes, ids or directly on the HTML element.

```
.background, #background, body{  
background:#E0C8C5 }
```

If only the background color should be changed can be used:

```
.background{ background-color:#E0C8C5 }
```

This example shows the color as background, it is applied via the CSS property "background".

To optimize and compress your CSS code, you can use our [online CSS compressor and optimizer](#) based on csstidy. If you want to create a linear or radial gradient as background or border, check our [CSS Gradient Generator](#).

Hey! You found this booklet interesting? Support Converting Colors with the new Membership Option!

The pro membership hides all ads, plus gives you double the colors in the color bucket, and more awesome pro features!

[Learn more, Memberships starting at \\$2.50/m!](#)

**Follow me
on Twitter!**

@ConvertingColor