

# Converting Colors

Hex(E0C9BB)

Have a look what the booklet for  
Hex(E0C9BB) contains.

<b>Hex(E0C9BB)</b> .....	3
<i><b>Conversions</b></i> .....	4
<i><b>Details</b></i> .....	6
<i><b>Harmonies</b></i> .....	11
<i><b>Previews</b></i> .....	23
<i><b>Color Blindness Simulation</b></i> .....	26
<i><b>CSS Examples</b></i> .....	29

# **Color**

**Hex(E0C9BB)**

# Conversions

## Conversions Part 1

Format	Color
Hex	E0C9BB
RGB	224, 201, 187
RGB Percent	88%, 79%, 73%
CMY	0.1216, 0.2118, 0.2667
CMYK	0.00, 0.10, 0.17, 0.12
HSL	23°, 37%, 81%
HSV	23°, 17%, 88%
XYZ	60.5968, 61.2084, 55.6343
YIQ	206.2810, 18.2020, 0.5220

# Conversions

## Conversions Part 2

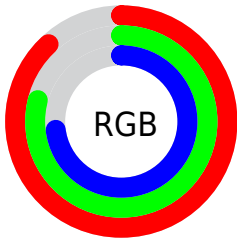
Format	Color
R <sub>Y</sub> B	224, 210, 187
Decimal	14731707
CIE Lab	82.49, 5.81, 9.92
CIE LCh	82, 11.495, 59.659
Yxy	61.2084, 0.3415, 0.3450
Android (android.graphics.Color)	4292921787 (0xFFE0C9BB)
YUV	206.2810, -9.5055, 15.5396
Hunter-Lab	78.2358, 1.3427, 12.6033

# Details

The Hex color **E0C9BB** is a light color, and the websafe version is hex **CCCCCC**. A complement of this color would be **BBD2E0**, and the grayscale version is **CECECE**.

A 20% lighter version of the original color is **FFFFFF3**, and **A89386** is the 20% darker color. If you saturate the color by 10%, you get **E0BBA5**, and if you desaturate by 10%, it is **E0D7D1**.

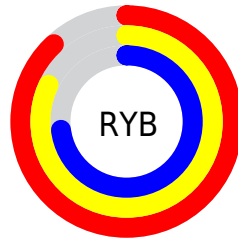
# Distribution



Red (88%)

Green (79%)

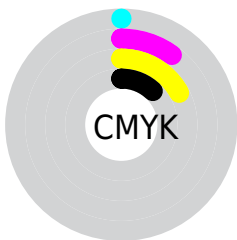
Blue (73%)



Red (88%)

Yellow (82%)

Blue (73%)

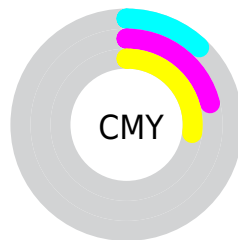


Cyan (0%)

Magenta (10%)

Yellow (17%)

Black (12%)



Cyan (12%)

Magenta (21%)

Yellow (27%)

# Brightness & Saturation Gradients

These gradients show how the Hex color E0C9BB changes by changing the brightness by 10 percent. The first figure shows a shift by +10% for each color and the second figure -10%.

Similar to the brightness gradients but the following saturation gradients show a change of the Hex color E0C9BB by changing the saturation by 10% instead.



 E0C9BB

 E0C9BB

FFFFFFF

 C4AEA0

 FFFFFF3

 A89386

 8E796D

 746154

 5B493D

 433227

 2C1D13

 170400

 000000

 E0C9BB

 E0C9BB

 E0BBA5

 E0D7D1

 E0AD8E

 E0E5E8

 E09F78

 E0F3FE

 E09161

 E0FFFF

 E0834B

 E07535

 E0681E

 E05A08

 E05500

# Harmonies

## Analogous

The Analogous color harmony consists of three colors that are next to each other on the color wheel.



E5C7C3



E0C9BB



D7CCB8

# Triad

The Triadic color harmony groups three colors that are evenly spaced from another and form a triangle on the color wheel.



E0C9BB



B5D4CD



CFCBE0

# Complementary

The Complementary color scheme is a pair of colors which are on the opposite of each other on the color wheel.



E0C9BB



BBD2E0

# Split Complementary

Split-complementary colors differ from the complementary color scheme. The scheme consists of three colors, the original color and two neighbors of the complement color.



C2CEE3



E0C9BB



B2D3D7

# Square

The Square scheme is like the rectangle color scheme, but the four colors are evenly spaced on the color wheel.



E0C9BB



BED3C2



B7D1DF



DCC8D8

# Rectangle

The Rectangle color scheme consists of four colors that form a rectangle on the color wheel.



E0C9BB



CFCFB9



B7D1DF



CBCCE1



# Sweetspot

The Sweet Spot groups the original color and five complimentary colors.



E0C9BB



FFF7F2



E0BBD2



807B78



000000



808080

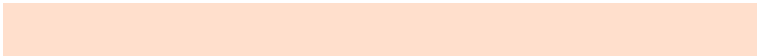


# Same Dimension

The Same Dimension uses a secret algorithm to generate beautiful new colors.



E0C9BB



FFDFCC



E0DBBB



706965



B04300



301200

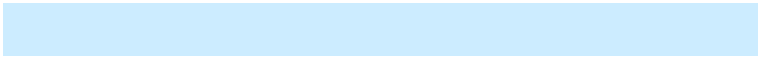


# Inverse Universe

The Inverse Universe completely reimagines the original color for something new.



BBD2E0



CCECFE



BBC0E0



656C70



006DB0



001E30



# Previews

## White Background



This preview shows how the Hex color E0C9BB looks on a white background.

## Color Contrast Check

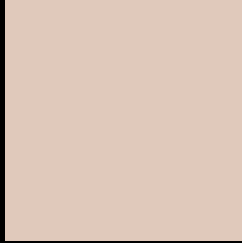
Large Text (above 18pt) WCAG AA × Fail

Any Text WCAG AA × Fail

Large Text (above 18pt) WCAG AAA × Fail

Any Text WCAG AAA × Fail

# Black Background



This preview shows how the Hex color E0C9BB looks on a black background.

## Color Contrast Check

Large Text (above 18pt) WCAG AA ✓ Pass

Any Text WCAG AA ✓ Pass

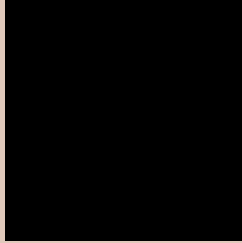
Large Text (above 18pt) WCAG AAA ✓ Pass

Any Text WCAG AAA ✓ Pass

If you want to check with other color combinations, try the [Color Contrast Checker](#).



## Hex E0C9BB Background



This preview shows how black text looks on a background with the Hex color E0C9BB.

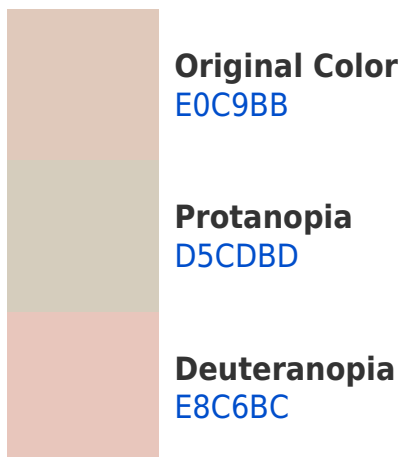


This preview shows how white text looks on a background with the Hex color E0C9BB.

# Color Blindness Simulation

Color vision deficiency is a very complex topic, and I could not describe the different causes any better than Wikipedia does, so if you want to learn more, you should check out their [article about color blindness](#).

## Dichromacy





**Tritanopia**  
E3C5D5

# Trichromacy



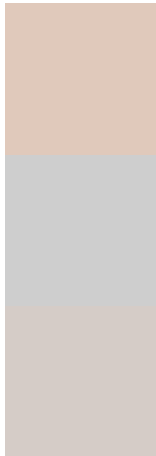
**Original Color**  
E0C9BB

**Protanomaly**  
D9CCBC

**Deuteranomaly**  
E5C7BC

**Tritanomaly**  
E2C6CC

# Monochromacy



**Original Color**  
E0C9BB

**Achromatopsia**  
CECECE

**Achromatomaly**  
D5CCC7

# CSS Examples

## Text

The CSS property to change the color of the text to Hex E0C9BB is called "color". The color property can be set on classes, ids or directly on the HTML element.

This example shows how text in the color #E0C9BB looks like.

```
.text, #text, p{  
    color:#E0C9BB  
}
```

If you want to add a text shadow in that color use the text-shadow property, you can generate a text shadow directly with our [CSS Text Shadow Generator](#).

Here you see how black text with a 4 pixel #E0C9BB colored shadow looks like.

```
.shadow{ text-shadow: 4px 4px 2px #E0C9BB  
}
```

## Border

The CSS property to change the border of an element to Hex E0C9BB is called "border". The border property can be set on classes, ids or directly on the HTML element.

This example shows the color as border, it can be applied via the CSS property "border" or "border-color".

```
.border, #border, table{ border:4px solid  
#E0C9BB }
```

If only the border color should be changed use the property `border-color`.

```
.border{ border-color:#E0C9BB }
```

If you want to add a box shadow in that color use:

Here you see how a box with a 4 pixel #E0C9BB colored shadow looks like.

```
.boxshadow{ -moz-box-shadow:4px 4px 4px  
4px #E0C9BB; -webkit-box-shadow:4px 4px  
4px 4px #E0C9BB; box-shadow:4px 4px 4px  
4px #E0C9BB }
```

# Background

The CSS property to change the background color of an element to Hex E0C9BB is called "background". The background property can be set on classes, ids or directly on the HTML element.

```
.background, #background, body{  
background:#E0C9BB }
```

If only the background color should be changed can be used:

```
.background{ background-color:#E0C9BB }
```

This example shows the color as background, it is applied via the CSS property "background".

To optimize and compress your CSS code, you can use our [online CSS compressor and optimizer](#) based on csstidy. If you want to create a linear or radial gradient as background or border, check our [CSS Gradient Generator](#).



Hey! You found this booklet interesting? Support Converting Colors with the new Membership Option!

The pro membership hides all ads, plus gives you double the colors in the color bucket, and more awesome pro features!

**[Learn more, Memberships starting at \\$2.50/m!](#)**

**Follow me  
on Twitter!**

@ConvertingColor