

# Converting Colors

Hex(E0C9C8)

Have a look what the booklet for  
Hex(E0C9C8) contains.

<b>Hex(E0C9C8)</b> .....	3
<b><i>Conversions</i></b> .....	4
<b><i>Details</i></b> .....	6
<b><i>Harmonies</i></b> .....	11
<b><i>Previews</i></b> .....	23
<b><i>Color Blindness Simulation</i></b> .....	26
<b><i>CSS Examples</i></b> .....	29

# **Color**

**Hex(E0C9C8)**

# Conversions

## Conversions Part 1

Format	Color
Hex	E0C9C8
RGB	224, 201, 200
RGB Percent	88%, 79%, 78%
CMY	0.1216, 0.2118, 0.2157
CMYK	0.00, 0.10, 0.11, 0.12
HSL	2°, 28%, 83%
HSV	2°, 11%, 88%
XYZ	62.0524, 61.7907, 63.2999
YIQ	207.7630, 14.0290, 4.5650

# Conversions

## Conversions Part 2

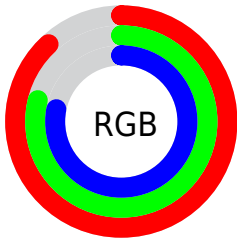
<b>Format</b>	<b>Color</b>
<b>R<sub>YB</sub></b>	224, 201, 200
Decimal	14731720
CIE Lab	82.80, 7.88, 3.43
CIE LCh	83, 8.596, 23.497
Yxy	61.7907, 0.3316, 0.3302
Android (android.graphics.Color)	4292921800 (0xFFE0C9C8)
YUV	207.7630, -3.8272, 14.2398
Hunter-Lab	78.6071, 3.3456, 7.2805

# Details

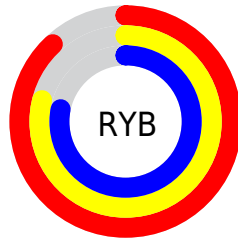
The Hex color **E0C9C8** is a light color, and the websafe version is hex **CCCCCC**. A complement of this color would be **C8DFE0**, and the grayscale version is **D0D0D0**.

A 20% lighter version of the original color is **FFFFFF**, and **A99392** is the 20% darker color. If you saturate the color by 10%, you get **E0B4B2**, and if you desaturate by 10%, it is **E0DEDE**.

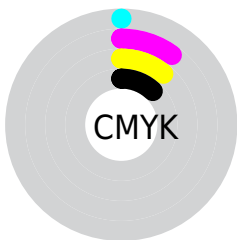
# Distribution



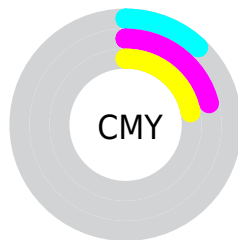
- Red (88%)
- Green (79%)
- Blue (78%)



- Red (88%)
- Yellow (79%)
- Blue (78%)



- Cyan (0%)
- Magenta (10%)
- Yellow (11%)
- Black (12%)



- Cyan (12%)
- Magenta (21%)
- Yellow (22%)

# Brightness & Saturation Gradients

These gradients show how the Hex color E0C9C8 changes by changing the brightness by 10 percent. The first figure shows a shift by +10% for each color and the second figure -10%.

Similar to the brightness gradients but the following saturation gradients show a change of the Hex color E0C9C8 by changing the saturation by 10% instead.



 E0C9C8

FFFFFF

 E0C9C8

 C4AEAD

 A99392

 8E7978

 746060

 5C4948

 443232

 2D1D1D

 1A0402

 000000

 E0C9C8

 E0C9C8

 E0B4B2

 E0DEDE

 E09E9B

 E0F4F5

 E08985

 E0FFFF

 E0736E

 E05E58

 E04842

 E0332B

 E01D15

 E00900

# Harmonies

## Analogous

The Analogous color harmony consists of three colors that are next to each other on the color wheel.



DEC9D0



E0C9C8



DDCBC1

# Triad

The Triadic color harmony groups three colors that are evenly spaced from another and form a triangle on the color wheel.



E0C9C8



C5D2C4



C4CFDE

# Complementary

The Complementary color scheme is a pair of colors which are on the opposite of each other on the color wheel.



E0C9C8



C8DFE0

# Split Complementary

Split-complementary colors differ from the complementary color scheme. The scheme consists of three colors, the original color and two neighbors of the complement color.



BDD2DB



E0C9C8



BDD3CC

# Square

The Square scheme is like the rectangle color scheme, but the four colors are evenly spaced on the color wheel.



E0C9C8



CED0BF



BAD3D4



CECDDD

# Rectangle

The Rectangle color scheme consists of four colors that form a rectangle on the color wheel.



E0C9C8



D9CCBF



BAD3D4



C1D0DD



# Sweetspot

The Sweet Spot groups the original color and five complimentary colors.



E0C9C8



FFF8F7



E0C8DF



807B7A



000000



808080

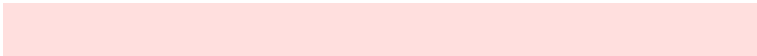


# Same Dimension

The Same Dimension uses a secret algorithm to generate beautiful new colors.



E0C9C8



FFDFDE



E0D5C8



706565



B00700



300200

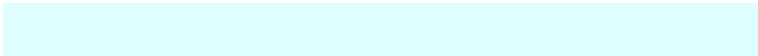


# Inverse Universe

The Inverse Universe completely reimagines the original color for something new.



C8DFE0



DEFEFF



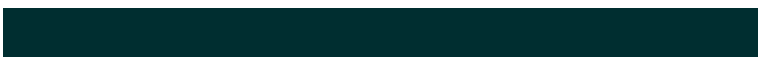
C8D3E0



657070



00A9B0

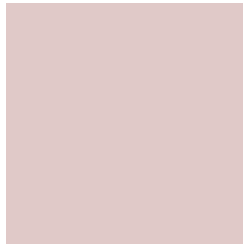


002E30



# Previews

## White Background



This preview shows how the Hex color E0C9C8 looks on a white background.

## Color Contrast Check

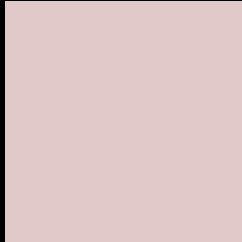
Large Text (above 18pt) WCAG AA × Fail

Any Text WCAG AA × Fail

Large Text (above 18pt) WCAG AAA × Fail

Any Text WCAG AAA × Fail

# Black Background



This preview shows how the Hex color E0C9C8 looks on a black background.

## Color Contrast Check

Large Text (above 18pt) WCAG AA ✓ Pass

Any Text WCAG AA ✓ Pass

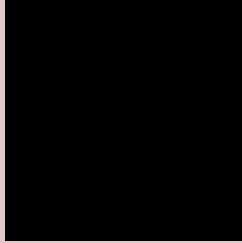
Large Text (above 18pt) WCAG AAA ✓ Pass

Any Text WCAG AAA ✓ Pass

If you want to check with other color combinations, try the [Color Contrast Checker](#).



## Hex E0C9C8 Background



This preview shows how black text looks on a background with the Hex color E0C9C8.

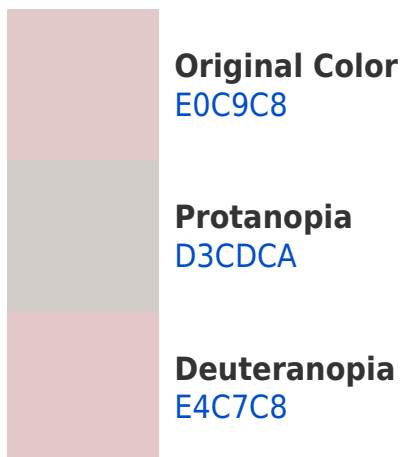


This preview shows how white text looks on a background with the Hex color E0C9C8.

# Color Blindness Simulation

Color vision deficiency is a very complex topic, and I could not describe the different causes any better than Wikipedia does, so if you want to learn more, you should check out their [article about color blindness](#).

## Dichromacy





**Tritanopia**  
E2C7D6

# Trichromacy



**Original Color**  
E0C9C8

**Protanomaly**  
D8CCC9

**Deuteranomaly**  
E3C8C8

**Tritanomaly**  
E1C8D1

# Monochromacy



**Original Color**  
E0C9C8

**Achromatopsia**  
D0D0D0

**Achromatomaly**  
D6CDCD

# CSS Examples

## Text

The CSS property to change the color of the text to Hex E0C9C8 is called "color". The color property can be set on classes, ids or directly on the HTML element.

This example shows how text in the color #E0C9C8 looks like.

```
.text, #text, p{  
    color:#E0C9C8  
}
```

If you want to add a text shadow in that color use the text-shadow property, you can generate a text shadow directly with our [CSS Text Shadow Generator](#).

Here you see how black text with a 4 pixel #E0C9C8 colored shadow looks like.

```
.shadow{ text-shadow: 4px 4px 2px #E0C9C8
}
```

## Border

The CSS property to change the border of an element to Hex E0C9C8 is called "border". The border property can be set on classes, ids or directly on the HTML element.

This example shows the color as border, it can be applied via the CSS property "border" or "border-color".

```
.border, #border, table{ border:4px solid
#E0C9C8 }
```

If only the border color should be changed use the property `border-color`.

```
.border{ border-color:#E0C9C8 }
```

If you want to add a box shadow in that color use:

Here you see how a box with a 4 pixel #E0C9C8 colored shadow looks like.

```
.boxshadow{ -moz-box-shadow:4px 4px 4px  
4px #E0C9C8; -webkit-box-shadow:4px 4px  
4px 4px #E0C9C8; box-shadow:4px 4px 4px  
4px #E0C9C8 }
```

# Background

The CSS property to change the background color of an element to Hex E0C9C8 is called "background". The background property can be set on classes, ids or directly on the HTML element.

```
.background, #background, body{  
background:#E0C9C8 }
```

If only the background color should be changed can be used:

```
.background{ background-color:#E0C9C8 }
```

This example shows the color as background, it is applied via the CSS property "background".

To optimize and compress your CSS code, you can use our [online CSS compressor and optimizer](#) based on csstidy. If you want to create a linear or radial gradient as background or border, check our [CSS Gradient Generator](#).



Hey! You found this booklet interesting? Support Converting Colors with the new Membership Option!

The pro membership hides all ads, plus gives you double the colors in the color bucket, and more awesome pro features!

**[Learn more, Memberships starting at \\$2.50/m!](#)**

**Follow me  
on Twitter!**

@ConvertingColor