

Converting Colors

Hex(E0C9C9)

Have a look what the booklet for
Hex(E0C9C9) contains.

Hex(E0C9C9)	3
<i>Conversions</i>	4
<i>Details</i>	6
<i>Harmonies</i>	11
<i>Previews</i>	23
<i>Color Blindness Simulation</i>	26
<i>CSS Examples</i>	29

Color

Hex(E0C9C9)

Conversions

Conversions Part 1

Format	Color
Hex	E0C9C9
RGB	224, 201, 201
RGB Percent	88%, 79%, 79%
CMY	0.1216, 0.2118, 0.2118
CMYK	0.00, 0.10, 0.10, 0.12
HSL	0°, 27%, 83%
HSV	0°, 10%, 88%
XYZ	62.1697, 61.8376, 63.9175
YIQ	207.8770, 13.7080, 4.8760

Conversions

Conversions Part 2

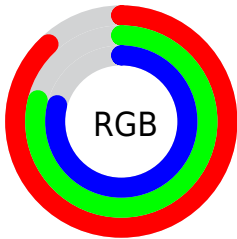
Format	Color
R_{YB}	224, 201, 201
Decimal	14731721
CIE _{Lab}	82.83, 8.05, 2.93
CIE _{LCh}	83, 8.565, 19.999
Yxy	61.8376, 0.3308, 0.3291
Android (android.graphics.Color)	4292921801 (0xFFE0C9C9)
YUV	207.8770, -3.3904, 14.1399
Hunter-Lab	78.6369, 3.5061, 6.8538

Details

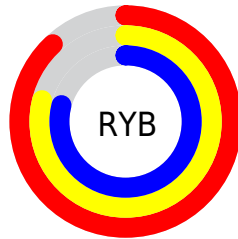
The Hex color **E0C9C9** is a light color, and the websafe version is hex **CCCCCC**. A complement of this color would be **C9E0E0**, and the grayscale version is **D0D0D0**.

A 20% lighter version of the original color is **FFFFFF**, and **A99393** is the 20% darker color. If you saturate the color by 10%, you get **E0B3B3**, and if you desaturate by 10%, it is **E0DFDF**.

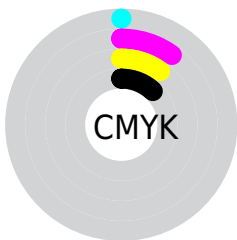
Distribution



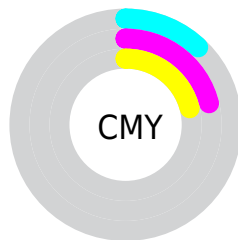
- Red (88%)
- Green (79%)
- Blue (79%)



- Red (88%)
- Yellow (79%)
- Blue (79%)



- Cyan (0%)
- Magenta (10%)
- Yellow (10%)
- Black (12%)



- Cyan (12%)
- Magenta (21%)
- Yellow (21%)

Brightness & Saturation Gradients

These gradients show how the Hex color E0C9C9 changes by changing the brightness by 10 percent. The first figure shows a shift by +10% for each color and the second figure -10%.

Similar to the brightness gradients but the following saturation gradients show a change of the Hex color E0C9C9 by changing the saturation by 10% instead.

 E0C9C9

 E0C9C9

FFFFFF

 C4AEAE

 A99393

 8E7979

 746061

 5C4949

 443232

 2D1D1D

 1A0404

 000000

 E0C9C9

 E0C9C9

 E0B3B3

 E0DFDF

 E09C9C

 E0F6F6

 E08686

 E0FFFF

 E06F6F

 E05959

 E04343

 E02C2C

 E01616

 E00000

Harmonies

Analogous

The Analogous color harmony consists of three colors that are next to each other on the color wheel.



DDC9D1



E0C9C9



DECAC2

Triad

The Triadic color harmony groups three colors that are evenly spaced from another and form a triangle on the color wheel.



E0C9C9



C6D2C4



C3D0DE

Complementary

The Complementary color scheme is a pair of colors which are on the opposite of each other on the color wheel.



E0C9C9



C9E0E0

Split Complementary

Split-complementary colors differ from the complementary color scheme. The scheme consists of three colors, the original color and two neighbors of the complement color.



BCD2DA



E0C9C9



BED3CB

Square

The Square scheme is like the rectangle color scheme, but the four colors are evenly spaced on the color wheel.



E0C9C9



CFCFBF



BBD3D3



CDCDDD

Rectangle

The Rectangle color scheme consists of four colors that form a rectangle on the color wheel.



E0C9C9



DACCBF



BBD3D3



C0D1DD

Sweetspot

The Sweet Spot groups the original color and five complimentary colors.



E0C9C9



FFF7F7



E0C9E0



807A7A



000000



808080

Same Dimension

The Same Dimension uses a secret algorithm to generate beautiful new colors.



E0C9C9



FFE0E0



E0D5C9



706565



B00000



300000

Inverse Universe

The Inverse Universe completely reimagines the original color for something new.



C9E0E0



E0FFFF



C9D5E0



657070



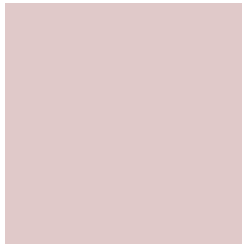
00B0B0



003030

Previews

White Background



This preview shows how the Hex color E0C9C9 looks on a white background.

Color Contrast Check

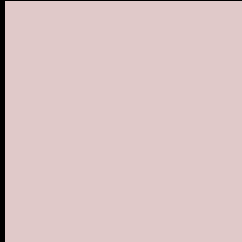
Large Text (above 18pt) WCAG AA × Fail

Any Text WCAG AA × Fail

Large Text (above 18pt) WCAG AAA × Fail

Any Text WCAG AAA × Fail

Black Background



This preview shows how the Hex color E0C9C9 looks on a black background.

Color Contrast Check

Large Text (above 18pt) WCAG AA ✓ Pass

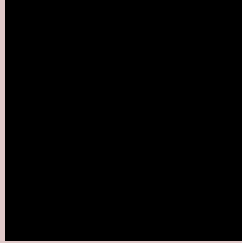
Any Text WCAG AA ✓ Pass

Large Text (above 18pt) WCAG AAA ✓ Pass

Any Text WCAG AAA ✓ Pass

If you want to check with other color combinations, try the [Color Contrast Checker](#).

Hex E0C9C9 Background



This preview shows how black text looks on a background with the Hex color E0C9C9.

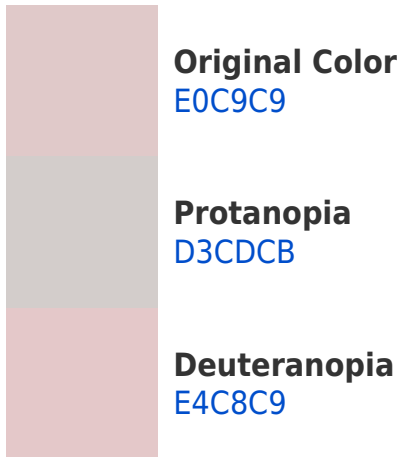


This preview shows how white text looks on a background with the Hex color E0C9C9.

Color Blindness Simulation

Color vision deficiency is a very complex topic, and I could not describe the different causes any better than Wikipedia does, so if you want to learn more, you should check out their [article about color blindness](#).

Dichromacy





Tritanopia
E2C7D6

Trichromacy



Original Color
E0C9C9

Protanomaly
D8CCCA

Deuteranomaly
E3C8C9

Tritanomaly
E1C8D1

Monochromacy



Original Color
E0C9C9

Achromatopsia
D0D0D0

Achromatomaly
D6CDCD

CSS Examples

Text

The CSS property to change the color of the text to Hex E0C9C9 is called "color". The color property can be set on classes, ids or directly on the HTML element.

This example shows how text in the color #E0C9C9 looks like.

```
.text, #text, p{  
    color:#E0C9C9  
}
```

If you want to add a text shadow in that color use the text-shadow property, you can generate a text shadow directly with our [CSS Text Shadow Generator](#).

Here you see how black text with a 4 pixel #E0C9C9 colored shadow looks like.

```
.shadow{ text-shadow: 4px 4px 2px #E0C9C9  
}
```

Border

The CSS property to change the border of an element to Hex E0C9C9 is called "border". The border property can be set on classes, ids or directly on the HTML element.

This example shows the color as border, it can be applied via the CSS property "border" or "border-color".

```
.border, #border, table{ border:4px solid  
#E0C9C9 }
```

If only the border color should be changed use the property `border-color`.

```
.border{ border-color:#E0C9C9 }
```

If you want to add a box shadow in that color use:

Here you see how a box with a 4 pixel #E0C9C9 colored shadow looks like.

```
.boxshadow{ -moz-box-shadow:4px 4px 4px  
4px #E0C9C9; -webkit-box-shadow:4px 4px  
4px 4px #E0C9C9; box-shadow:4px 4px 4px  
4px #E0C9C9 }
```

Background

The CSS property to change the background color of an element to Hex E0C9C9 is called "background". The background property can be set on classes, ids or directly on the HTML element.

```
.background, #background, body{  
background:#E0C9C9 }
```

If only the background color should be changed can be used:

```
.background{ background-color:#E0C9C9 }
```

This example shows the color as background, it is applied via the CSS property "background".

To optimize and compress your CSS code, you can use our [online CSS compressor and optimizer](#) based on csstidy. If you want to create a linear or radial gradient as background or border, check our [CSS Gradient Generator](#).

Hey! You found this booklet interesting? Support Converting Colors with the new Membership Option!

The pro membership hides all ads, plus gives you double the colors in the color bucket, and more awesome pro features!

[Learn more, Memberships starting at \\$2.50/m!](#)

**Follow me
on Twitter!**

@ConvertingColor