

Converting Colors

Hex(E0CACA)

Have a look what the booklet for
Hex(E0CACA) contains.

Hex(E0CACA)	3
<i>Conversions</i>	4
<i>Details</i>	6
<i>Harmonies</i>	11
<i>Previews</i>	23
<i>Color Blindness Simulation</i>	26
<i>CSS Examples</i>	29

Color

Hex(E0CACA)

Conversions

Conversions Part 1

Format	Color
Hex	E0CACA
RGB	224, 202, 202
RGB Percent	88%, 79%, 79%
CMY	0.1216, 0.2078, 0.2078
CMYK	0.00, 0.10, 0.10, 0.12
HSL	0°, 26%, 84%
HSV	0°, 10%, 88%
XYZ	62.5217, 62.3526, 64.6171
YIQ	208.5780, 13.1120, 4.6640

Conversions

Conversions Part 2

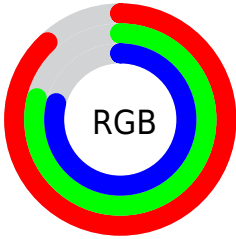
Format	Color
RYB	224, 202, 202
Decimal	14731978
CIELab	83.10, 7.69, 2.79
CIElCh	83, 8.178, 19.963
Yxy	62.3526, 0.3299, 0.3291
Android (android.graphics.Color)	4292922058 (0xFFE0CACA)
YUV	208.5780, -3.2430, 13.5251
Hunter-Lab	78.9637, 3.1459, 6.7567

Details

The Hex color **E0CACA** is a light color, and the websafe version is hex **CCCCCC**. A complement of this color would be **CAE0E0**, and the grayscale version is **D1D1D1**.

A 20% lighter version of the original color is **FFFFFF**, and **A99494** is the 20% darker color. If you saturate the color by 10%, you get **E0B4B4**, and if you desaturate by 10%, it is **E0E0E0**.

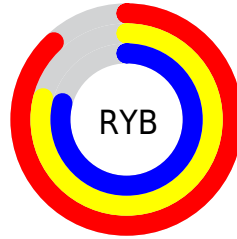
Distribution



Red (88%)

Green (79%)

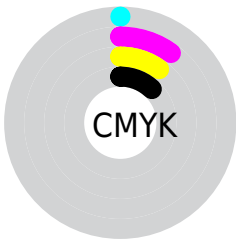
Blue (79%)



Red (88%)

Yellow (79%)

Blue (79%)

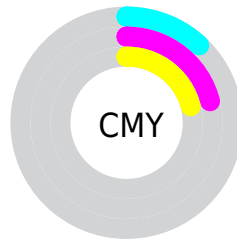


Cyan (0%)

Magenta (10%)

Yellow (10%)

Black (12%)



Cyan (12%)

Magenta (21%)

Yellow (21%)

Brightness & Saturation Gradients

These gradients show how the Hex color E0CACA changes by changing the brightness by 10 percent. The first figure shows a shift by +10% for each color and the second figure -10%.

Similar to the brightness gradients but the following saturation gradients show a change of the Hex color E0CACA by changing the saturation by 10% instead.

 E0CACA

FFFFFF

 E0CACA

 C4AFAF

 A99494

 8E7A7A

 746161

 5C4A4A

 443333

 2D1E1E

 1A0505

 000000

 E0CACA

 E0CACA

 E0B4B4

 E0E0E0

 E09D9D

 E0F7F7

 E08787

 E0FFFF

 E07070

 E05A5A

 E04444

 E02D2D

 E01717

 E00000

Harmonies

Analogous

The Analogous color harmony consists of three colors that are next to each other on the color wheel.



DDCAD2



E0CACA



DECBC3

Triad

The Triadic color harmony groups three colors that are evenly spaced from another and form a triangle on the color wheel.



E0CACA



C7D2C5



C4D0DE

Complementary

The Complementary color scheme is a pair of colors which are on the opposite of each other on the color wheel.



E0CACA



CAE0E0

Split Complementary

Split-complementary colors differ from the complementary color scheme. The scheme consists of three colors, the original color and two neighbors of the complement color.



BED2DA



E0CACA



C0D3CC

Square

The Square scheme is like the rectangle color scheme, but the four colors are evenly spaced on the color wheel.



E0CACA



D0D0C1



BCD4D4



CDCEDD

Rectangle

The Rectangle color scheme consists of four colors that form a rectangle on the color wheel.



E0CACA



DBCDC1



BCD4D4



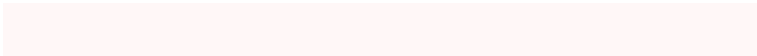
C2D1DD

Sweetspot

The Sweet Spot groups the original color and five complimentary colors.



E0CACA



FFF7F7



E0CAE0



807A7A



000000



808080

Same Dimension

The Same Dimension uses a secret algorithm to generate beautiful new colors.



E0CACA



FFE0E0



E0D5CA



706565



B00000



300000

Inverse Universe

The Inverse Universe completely reimagines the original color for something new.



CAE0E0



E0FFFF



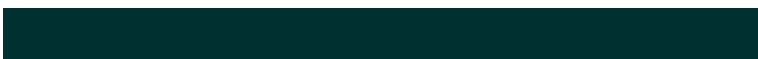
CAD5E0



657070



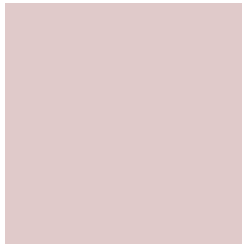
00B0B0



003030

Previews

White Background



This preview shows how the Hex color E0CACA looks on a white background.

Color Contrast Check

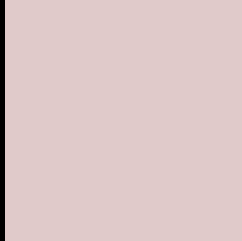
Large Text (above 18pt) WCAG AA × Fail

Any Text WCAG AA × Fail

Large Text (above 18pt) WCAG AAA × Fail

Any Text WCAG AAA × Fail

Black Background



This preview shows how the Hex color E0CACA looks on a black background.

Color Contrast Check

Large Text (above 18pt) WCAG AA ✓ Pass

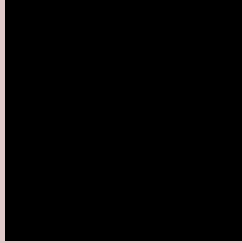
Any Text WCAG AA ✓ Pass

Large Text (above 18pt) WCAG AAA ✓ Pass

Any Text WCAG AAA ✓ Pass

If you want to check with other color combinations, try the [Color Contrast Checker](#).

Hex E0CACA Background



This preview shows how black text looks on a background with the Hex color E0CACA.

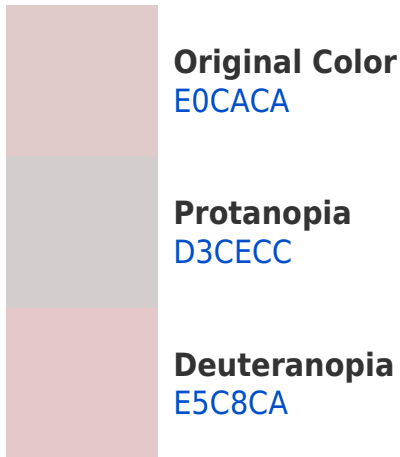


This preview shows how white text looks on a background with the Hex color E0CACA.

Color Blindness Simulation

Color vision deficiency is a very complex topic, and I could not describe the different causes any better than Wikipedia does, so if you want to learn more, you should check out their [article about color blindness](#).

Dichromacy





Tritanopia
E2C8D8

Trichromacy



Original Color
E0CACA

Protanomaly
D8CDCB

Deuteranomaly
E3C9CA

Tritanomaly
E1C9D3

Monochromacy



Original Color
E0CACA

Achromatopsia
D1D1D1

Achromatomaly
D6CECE

CSS Examples

Text

The CSS property to change the color of the text to Hex E0CACA is called "color". The color property can be set on classes, ids or directly on the HTML element.

This example shows how text in the color #E0CACA looks like.

```
.text, #text, p{  
  color:#E0CACA  
}
```

If you want to add a text shadow in that color use the text-shadow property, you can generate a text shadow directly with our [CSS Text Shadow Generator](#).

Here you see how black text with a 4 pixel #E0CACA colored shadow looks like.

```
.shadow{ text-shadow: 4px 4px 2px #E0CACA
}
```

Border

The CSS property to change the border of an element to Hex E0CACA is called "border". The border property can be set on classes, ids or directly on the HTML element.

This example shows the color as border, it can be applied via the CSS property "border" or "border-color".

```
.border, #border, table{ border:4px solid
#E0CACA }
```

If only the border color should be changed use the property `border-color`.

```
.border{ border-color:#E0CACA }
```

If you want to add a box shadow in that color use:

Here you see how a box with a 4 pixel #E0CACA colored shadow looks like.

```
.boxshadow{ -moz-box-shadow:4px 4px 4px  
4px #E0CACA; -webkit-box-shadow:4px 4px  
4px 4px #E0CACA; box-shadow:4px 4px 4px  
4px #E0CACA }
```

Background

The CSS property to change the background color of an element to Hex E0CACA is called "background". The background property can be set on classes, ids or directly on the HTML element.

```
.background, #background, body{  
background:#E0CACA }
```

If only the background color should be changed can be used:

```
.background{ background-color:#E0CACA }
```

This example shows the color as background, it is applied via the CSS property "background".

To optimize and compress your CSS code, you can use our [online CSS compressor and optimizer](#) based on csstidy. If you want to create a linear or radial gradient as background or border, check our [CSS Gradient Generator](#).

Hey! You found this booklet interesting? Support Converting Colors with the new Membership Option!

The pro membership hides all ads, plus gives you double the colors in the color bucket, and more awesome pro features!

[Learn more, Memberships starting at \\$2.50/m!](#)

**Follow me
on Twitter!**

@ConvertingColor