

Converting Colors

Hex(E0CBC4)

Have a look what the booklet for
Hex(E0CBC4) contains.

Hex(E0CBC4)	3
<i>Conversions</i>	4
<i>Details</i>	6
<i>Harmonies</i>	11
<i>Previews</i>	23
<i>Color Blindness Simulation</i>	26
<i>CSS Examples</i>	29

Color

Hex(E0CBC4)

Conversions

Conversions Part 1

Format	Color
Hex	E0CBC4
RGB	224, 203, 196
RGB Percent	88%, 80%, 77%
CMY	0.1216, 0.2039, 0.2314
CMYK	0.00, 0.09, 0.12, 0.12
HSL	15°, 31%, 82%
HSV	15°, 12%, 88%
XYZ	62.0602, 62.5447, 61.0260
YIQ	208.4810, 14.7630, 2.2750

Conversions

Conversions Part 2

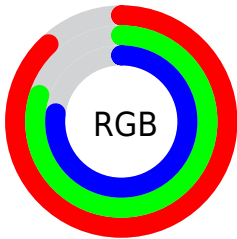
Format	Color
RYB	224, 205, 196
Decimal	14732228
CIELab	83.20, 6.18, 6.14
CIELCh	83, 8.709, 44.834
Yxy	62.5447, 0.3343, 0.3369
Android (android.graphics.Color)	4292922308 (0xFFE0CBC4)
YUV	208.4810, -6.1531, 13.6102
Hunter-Lab	79.0852, 1.6745, 9.6086

Details

The Hex color **E0CBC4** is a light color, and the websafe version is hex **CCCCCC**. A complement of this color would be **C4D9E0**, and the grayscale version is **D1D1D1**.

A 20% lighter version of the original color is **FFFFFFD**, and **A9958E** is the 20% darker color. If you saturate the color by 10%, you get **E0BAAE**, and if you desaturate by 10%, it is **E0DCDA**.

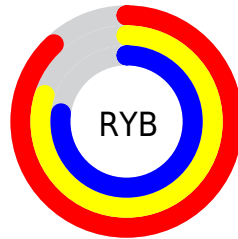
Distribution



Red (88%)

Green (80%)

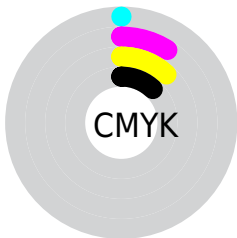
Blue (77%)



Red (88%)

Yellow (80%)

Blue (77%)

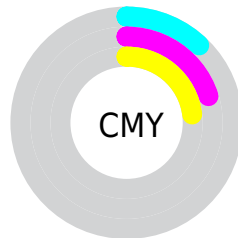


Cyan (0%)

Magenta (9%)

Yellow (12%)

Black (12%)



Cyan (12%)

Magenta (20%)

Yellow (23%)

Brightness & Saturation Gradients

These gradients show how the Hex color E0CBC4 changes by changing the brightness by 10 percent. The first figure shows a shift by +10% for each color and the second figure -10%.

Similar to the brightness gradients but the following saturation gradients show a change of the Hex color E0CBC4 by changing the saturation by 10% instead.

 E0CBC4

 E0CBC4

FFFFFF

 C4B0A9

FFFFFFD

 A9958E

 8E7B75

 74625C

 5B4A45

 44342E

 2D1F1A

 1A0600

 000000

 E0CBC4

 E0CBC4

 E0BAAE

 E0DCDA

 E0A997

 E0EDF1

 E09981

 E0FDFF

 E0886A

 E0FFFF

 E07754

 E0663E

 E05527

 E04511

 E03800

Harmonies

Analogous

The Analogous color harmony consists of three colors that are next to each other on the color wheel.



E1CACB



E0CBC4



DACDC0

Triad

The Triadic color harmony groups three colors that are evenly spaced from another and form a triangle on the color wheel.



E0CBC4



C0D4CB



CCCDFD

Complementary

The Complementary color scheme is a pair of colors which are on the opposite of each other on the color wheel.



E0CBC4



C4D9E0

Split Complementary

Split-complementary colors differ from the complementary color scheme. The scheme consists of three colors, the original color and two neighbors of the complement color.



C2D1DF



E0CBC4



BCD4D3

Square

The Square scheme is like the rectangle color scheme, but the four colors are evenly spaced on the color wheel.



E0CBC4



C8D2C3



BCD3DA



D6CCDB

Rectangle

The Rectangle color scheme consists of four colors that form a rectangle on the color wheel.



E0CBC4



D5CFBF



BCD3DA



C9CFDF

Sweetspot

The Sweet Spot groups the original color and five complimentary colors.



E0CBC4



FFF7F5



E0C4D9



807B79



000000



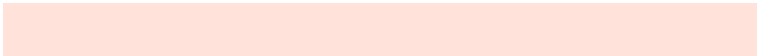
808080

Same Dimension

The Same Dimension uses a secret algorithm to generate beautiful new colors.



E0CBC4



FFE2D9



E0D9C4



706865



B02C00



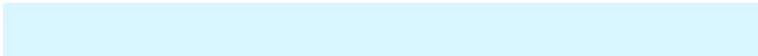
300C00

Inverse Universe

The Inverse Universe completely reimagines the original color for something new.



C4D9E0



D9F5FF



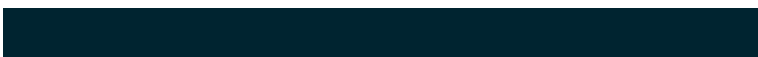
C4CBE0



656D70



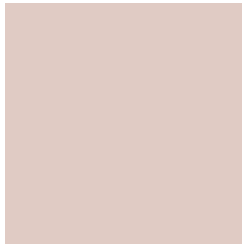
0084B0



002430

Previews

White Background



This preview shows how the Hex color E0CBC4 looks on a white background.

Color Contrast Check

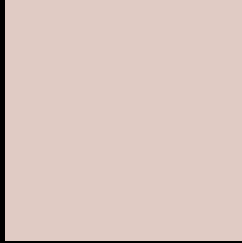
Large Text (above 18pt) WCAG AA × Fail

Any Text WCAG AA × Fail

Large Text (above 18pt) WCAG AAA × Fail

Any Text WCAG AAA × Fail

Black Background



This preview shows how the Hex color E0CBC4 looks on a black background.

Color Contrast Check

Large Text (above 18pt) WCAG AA ✓ Pass

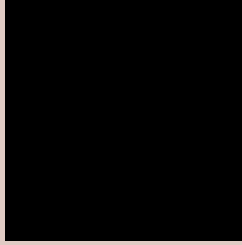
Any Text WCAG AA ✓ Pass

Large Text (above 18pt) WCAG AAA ✓ Pass

Any Text WCAG AAA ✓ Pass

If you want to check with other color combinations, try the [Color Contrast Checker](#).

Hex E0CBC4 Background



This preview shows how black text looks on a background with the Hex color E0CBC4.

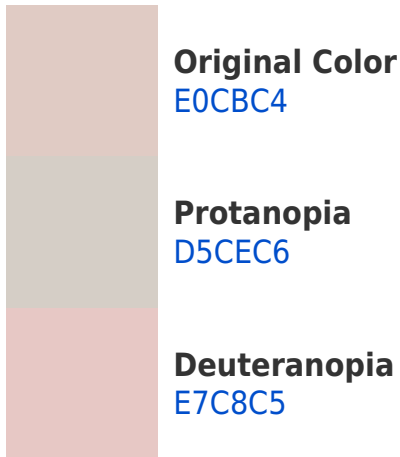


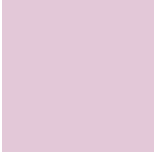
This preview shows how white text looks on a background with the Hex color E0CBC4.

Color Blindness Simulation

Color vision deficiency is a very complex topic, and I could not describe the different causes any better than Wikipedia does, so if you want to learn more, you should check out their [article about color blindness](#).

Dichromacy





Tritanopia
E3C8D8

Trichromacy



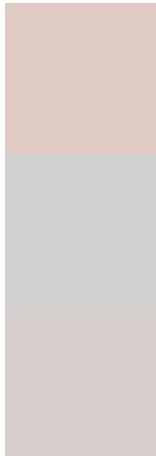
Original Color
E0CBC4

Protanomaly
D9CDC5

Deuteranomaly
E4C9C5

Tritanomaly
E2C9D1

Monochromacy



Original Color
E0CBC4

Achromatopsia
D0D0D0

Achromatomaly
D6CECC

CSS Examples

Text

The CSS property to change the color of the text to Hex E0CBC4 is called "color". The color property can be set on classes, ids or directly on the HTML element.

This example shows how text in the color #E0CBC4 looks like.

```
.text, #text, p{  
    color:#E0CBC4  
}
```

If you want to add a text shadow in that color use the text-shadow property, you can generate a text shadow directly with our [CSS Text Shadow Generator](#).

Here you see how black text with a 4 pixel #E0CBC4 colored shadow looks like.

```
.shadow{ text-shadow: 4px 4px 2px #E0CBC4
}
```

Border

The CSS property to change the border of an element to Hex E0CBC4 is called "border". The border property can be set on classes, ids or directly on the HTML element.

This example shows the color as border, it can be applied via the CSS property "border" or "border-color".

```
.border, #border, table{ border:4px solid
#E0CBC4 }
```

If only the border color should be changed use the property `border-color`.

```
.border{ border-color:#E0CBC4 }
```

If you want to add a box shadow in that color use:

Here you see how a box with a 4 pixel #E0CBC4 colored shadow looks like.

```
.boxshadow{ -moz-box-shadow:4px 4px 4px  
4px #E0CBC4; -webkit-box-shadow:4px 4px  
4px 4px #E0CBC4; box-shadow:4px 4px 4px  
4px #E0CBC4 }
```

Background

The CSS property to change the background color of an element to Hex E0CBC4 is called "background". The background property can be set on classes, ids or directly on the HTML element.

```
.background, #background, body{  
background:#E0CBC4 }
```

If only the background color should be changed can be used:

```
.background{ background-color:#E0CBC4 }
```

This example shows the color as background, it is applied via the CSS property "background".

To optimize and compress your CSS code, you can use our [online CSS compressor and optimizer](#) based on csstidy. If you want to create a linear or radial gradient as background or border, check our [CSS Gradient Generator](#).

Hey! You found this booklet interesting? Support Converting Colors with the new Membership Option!

The pro membership hides all ads, plus gives you double the colors in the color bucket, and more awesome pro features!

[Learn more, Memberships starting at \\$2.50/m!](#)

**Follow me
on Twitter!**

@ConvertingColor