

Converting Colors

Hex(E0CBCA)

Have a look what the booklet for
Hex(E0CBCA) contains.

Hex(E0CBCA)	3
<i>Conversions</i>	4
<i>Details</i>	6
<i>Harmonies</i>	11
<i>Previews</i>	23
<i>Color Blindness Simulation</i>	26
<i>CSS Examples</i>	29

Color

Hex(E0CBCA)

Conversions

Conversions Part 1

Format	Color
Hex	E0CBCA
RGB	224, 203, 202
RGB Percent	88%, 80%, 79%
CMY	0.1216, 0.2039, 0.2078
CMYK	0.00, 0.09, 0.10, 0.12
HSL	3°, 26%, 84%
HSV	3°, 10%, 88%
XYZ	62.7571, 62.8234, 64.6956
YIQ	209.1650, 12.8370, 4.1410

Conversions

Conversions Part 2

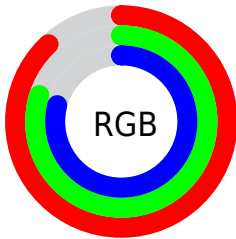
Format	Color
RYB	224, 203, 202
Decimal	14732234
CIELab	83.35, 7.16, 3.15
CIELCh	83, 7.823, 23.769
Yxy	62.8234, 0.3298, 0.3302
Android (android.graphics.Color)	4292922314 (0xFFE0CBCA)
YUV	209.1650, -3.5323, 13.0103
Hunter-Lab	79.2612, 2.6247, 7.0884

Details

The Hex color **E0CBCA** is a light color, and the websafe version is hex **CCCCCC**. A complement of this color would be **CADFE0**, and the grayscale version is **D1D1D1**.

A 20% lighter version of the original color is **FFFFFF**, and **A99594** is the 20% darker color. If you saturate the color by 10%, you get **E0B6B4**, and if you desaturate by 10%, it is **E0E0E0**.

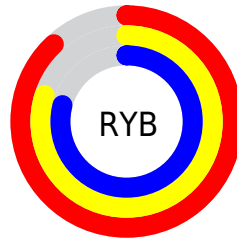
Distribution



Red (88%)

Green (80%)

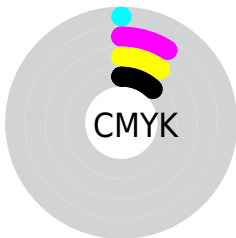
Blue (79%)



Red (88%)

Yellow (80%)

Blue (79%)

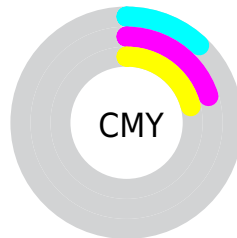


Cyan (0%)

Magenta (9%)

Yellow (10%)

Black (12%)



Cyan (12%)

Magenta (20%)

Yellow (21%)

Brightness & Saturation Gradients

These gradients show how the Hex color E0CBCA changes by changing the brightness by 10 percent. The first figure shows a shift by +10% for each color and the second figure -10%.

Similar to the brightness gradients but the following saturation gradients show a change of the Hex color E0CBCA by changing the saturation by 10% instead.

 E0CBCA

FFFFFF

 E0CBCA

 C4B0AF

 A99594

 8E7B7A

 746261

 5C4A4A

 443433

 2D1F1E

 1A0605

 000000

 E0CBCA

 E0CBCA

 E0B6B4

 E0E0E0

 E0A09D

 E0F6F7

 E08B87

 E0FFFF

 E07570

 E0605A

 E04B44

 E0352D

 E02017

 E00B00

Harmonies

Analogous

The Analogous color harmony consists of three colors that are next to each other on the color wheel.



DECBD1



E0CBCA



DECCC4

Triad

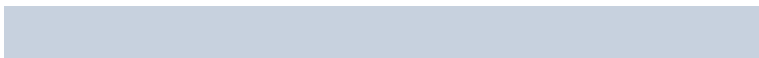
The Triadic color harmony groups three colors that are evenly spaced from another and form a triangle on the color wheel.



E0CBCA



C7D3C7



C7D1DE

Complementary

The Complementary color scheme is a pair of colors which are on the opposite of each other on the color wheel.



E0CBCA



CADFE0

Split Complementary

Split-complementary colors differ from the complementary color scheme. The scheme consists of three colors, the original color and two neighbors of the complement color.



C0D3DB



E0CBCA



C0D4CE

Square

The Square scheme is like the rectangle color scheme, but the four colors are evenly spaced on the color wheel.



E0CBCA



CFD1C2



BED4D5



CFCEDD

Rectangle

The Rectangle color scheme consists of four colors that form a rectangle on the color wheel.



E0BCBA



DACEC2



BED4D5



C4D1DE

Sweetspot

The Sweet Spot groups the original color and five complimentary colors.



E0CBCA



FFF8F7



E0CADF



807B7A



000000



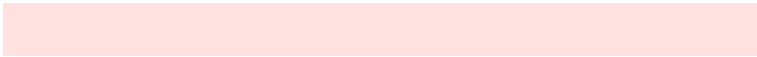
808080

Same Dimension

The Same Dimension uses a secret algorithm to generate beautiful new colors.



E0CBCA



FFE2E0



E0D6CA



706565



B00800



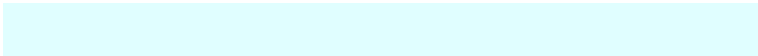
300200

Inverse Universe

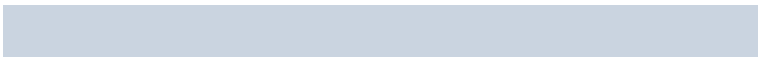
The Inverse Universe completely reimagines the original color for something new.



CADFE0



E0FEFF



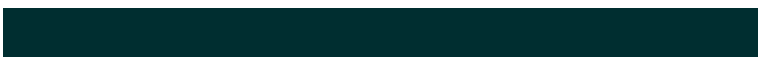
CAD4E0



657070



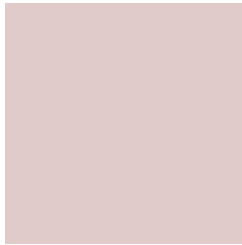
00A8B0



002E30

Previews

White Background



This preview shows how the Hex color E0CBCA looks on a white background.

Color Contrast Check

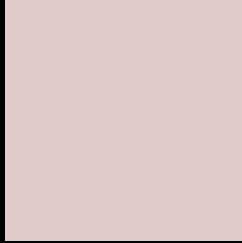
Large Text (above 18pt) WCAG AA × Fail

Any Text WCAG AA × Fail

Large Text (above 18pt) WCAG AAA × Fail

Any Text WCAG AAA × Fail

Black Background



This preview shows how the Hex color E0CBCA looks on a black background.

Color Contrast Check

Large Text (above 18pt) WCAG AA ✓ Pass

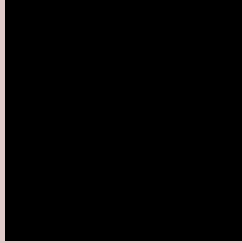
Any Text WCAG AA ✓ Pass

Large Text (above 18pt) WCAG AAA ✓ Pass

Any Text WCAG AAA ✓ Pass

If you want to check with other color combinations, try the [Color Contrast Checker](#).

Hex E0BCA Background



This preview shows how black text looks on a background with the Hex color E0BCA.

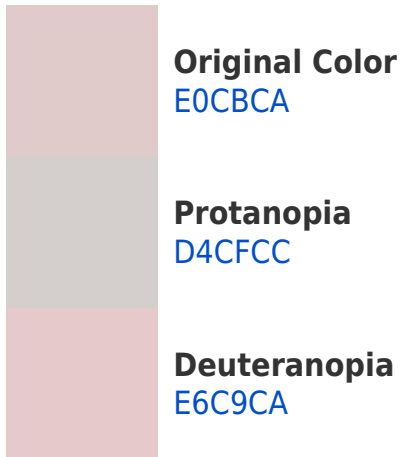


This preview shows how white text looks on a background with the Hex color E0BCA.

Color Blindness Simulation

Color vision deficiency is a very complex topic, and I could not describe the different causes any better than Wikipedia does, so if you want to learn more, you should check out their [article about color blindness](#).

Dichromacy





Tritanopia
E2C9D8

Trichromacy



Original Color
E0CBCA

Protanomaly
D8CECB

Deuteranomaly
E4CACA

Tritanomaly
E1CAD3

Monochromacy



Original Color
E0CBCA

Achromatopsia
D1D1D1

Achromatomaly
D6CFCE

CSS Examples

Text

The CSS property to change the color of the text to Hex E0CBCA is called "color". The color property can be set on classes, ids or directly on the HTML element.

This example shows how text in the color #E0CBCA looks like.

```
.text, #text, p{  
    color:#E0CBCA  
}
```

If you want to add a text shadow in that color use the text-shadow property, you can generate a text shadow directly with our [CSS Text Shadow Generator](#).

Here you see how black text with a 4 pixel #E0CBCA colored shadow looks like.

```
.shadow{ text-shadow: 4px 4px 2px #E0CBCA
}
```

Border

The CSS property to change the border of an element to Hex E0CBCA is called "border". The border property can be set on classes, ids or directly on the HTML element.

This example shows the color as border, it can be applied via the CSS property "border" or "border-color".

```
.border, #border, table{ border:4px solid
#E0CBCA }
```

If only the border color should be changed use the property `border-color`.

```
.border{ border-color:#E0CBCA }
```

If you want to add a box shadow in that color use:

Here you see how a box with a 4 pixel #E0CBCA colored shadow looks like.

```
.boxshadow{ -moz-box-shadow:4px 4px 4px  
4px #E0CBCA; -webkit-box-shadow:4px 4px  
4px 4px #E0CBCA; box-shadow:4px 4px 4px  
4px #E0CBCA }
```

Background

The CSS property to change the background color of an element to Hex E0BCA is called "background". The background property can be set on classes, ids or directly on the HTML element.

```
.background, #background, body{  
background:#E0BCA }
```

If only the background color should be changed can be used:

```
.background{ background-color:#E0BCA }
```

This example shows the color as background, it is applied via the CSS property "background".

To optimize and compress your CSS code, you can use our [online CSS compressor and optimizer](#) based on csstidy. If you want to create a linear or radial gradient as background or border, check our [CSS Gradient Generator](#).

Hey! You found this booklet interesting? Support Converting Colors with the new Membership Option!

The pro membership hides all ads, plus gives you double the colors in the color bucket, and more awesome pro features!

[Learn more, Memberships starting at \\$2.50/m!](#)

**Follow me
on Twitter!**

@ConvertingColor