

# Converting Colors

Hex(E0CDC7)

Have a look what the booklet for  
Hex(E0CDC7) contains.

<b>Hex(E0CDC7)</b> .....	3
<b><i>Conversions</i></b> .....	4
<b><i>Details</i></b> .....	6
<b><i>Harmonies</i></b> .....	11
<b><i>Previews</i></b> .....	23
<b><i>Color Blindness Simulation</i></b> .....	26
<b><i>CSS Examples</i></b> .....	29

# **Color**

**Hex(E0CDC7)**

# Conversions

## Conversions Part 1

Format	Color
Hex	E0CDC7
RGB	224, 205, 199
RGB Percent	88%, 80%, 78%
CMY	0.1216, 0.1961, 0.2196
CMYK	0.00, 0.08, 0.11, 0.12
HSL	14°, 29%, 83%
HSV	14°, 11%, 88%
XYZ	62.8806, 63.6335, 63.0012
YIQ	209.9970, 13.2500, 2.1620

# Conversions

## Conversions Part 2

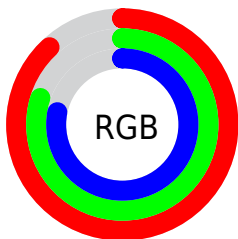
<b>Format</b>	<b>Color</b>
<a href="#">RYB</a>	<a href="#">224, 207, 199</a>
Decimal	<a href="#">14732743</a>
CIELab	<a href="#">83.77, 5.61, 5.37</a>
CIElCh	<a href="#">84, 7.766, 43.721</a>
Yxy	<a href="#">63.6335, 0.3318, 0.3358</a>
Android (android.graphics.Color)	<a href="#">4292922823 (0xFFE0CDC7)</a>
YUV	<a href="#">209.9970, -5.4215, 12.2806</a>
Hunter-Lab	<a href="#">79.7706, 1.1073, 9.0134</a>

# Details

The Hex color **E0CDC7** is a light color, and the websafe version is hex **CCCCCC**. A complement of this color would be **C7DAE0**, and the grayscale version is **D2D2D2**.

A 20% lighter version of the original color is **FFFFFF**, and **A99791** is the 20% darker color. If you saturate the color by 10%, you get **E0BCB1**, and if you desaturate by 10%, it is **E0DEDD**.

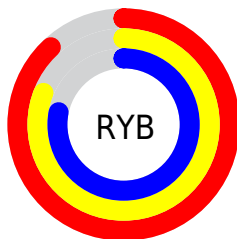
# Distribution



Red (88%)

Green (80%)

Blue (78%)



Red (88%)

Yellow (81%)

Blue (78%)

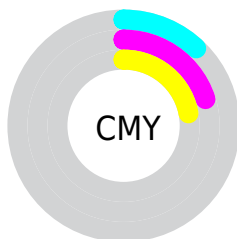


Cyan (0%)

Magenta (8%)

Yellow (11%)

Black (12%)



Cyan (12%)

Magenta (20%)

Yellow (22%)

# Brightness & Saturation Gradients

These gradients show how the Hex color E0CDC7 changes by changing the brightness by 10 percent. The first figure shows a shift by +10% for each color and the second figure -10%.

Similar to the brightness gradients but the following saturation gradients show a change of the Hex color E0CDC7 by changing the saturation by 10% instead.



 E0CDC7

FFFFFF

 E0CDC7

 C4B2AC

 A99791

 8E7D78

 74645F

 5C4C47

 443531

 2D201C

 1A0901

 000000

 E0CDC7

 E0CDC7

 E0BCB1

 E0DEDD

 E0AB9A

 E0EFF4

 E09A84

 E0FFFF

 E0896D

 E07857

 E06741

 E0562A

 E04514

 E03600

# Harmonies

## Analogous

The Analogous color harmony consists of three colors that are next to each other on the color wheel.



E1CCCE



E0CDC7



DBCFC3

# Triad

The Triadic color harmony groups three colors that are evenly spaced from another and form a triangle on the color wheel.



E0CDC7



C4D5CC



CED0DF

# Complementary

The Complementary color scheme is a pair of colors which are on the opposite of each other on the color wheel.



E0CDC7



C7DAE0

# Split Complementary

Split-complementary colors differ from the complementary color scheme. The scheme consists of three colors, the original color and two neighbors of the complement color.



C5D3DF



E0CDC7



BFD5D4

# Square

The Square scheme is like the rectangle color scheme, but the four colors are evenly spaced on the color wheel.



E0CDC7



CBD4C6



C0D4DB



D6CEDB

# Rectangle

The Rectangle color scheme consists of four colors that form a rectangle on the color wheel.



E0CDC7



D6D1C2



C0D4DB



CBD1DF

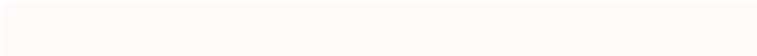


# Sweetspot

The Sweet Spot groups the original color and five complimentary colors.



E0CDC7



FFF9F7



E0C7DA



807C7A



000000



808080

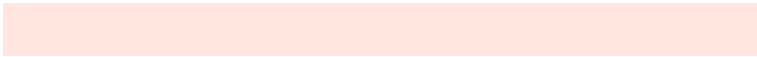


# Same Dimension

The Same Dimension uses a secret algorithm to generate beautiful new colors.



E0CDC7



FFE6DE



E0D9C7



706865



B02A00



300C00

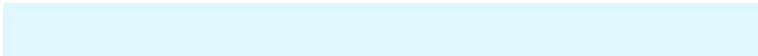


# Inverse Universe

The Inverse Universe completely reimagines the original color for something new.



C7DAE0



DEF7FF



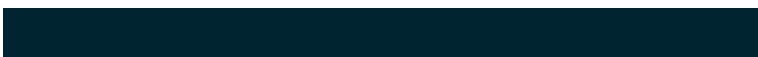
C7CEE0



656E70



0086B0

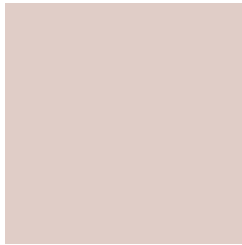


002530



# Previews

## White Background



This preview shows how the Hex color E0CDC7 looks on a white background.

## Color Contrast Check

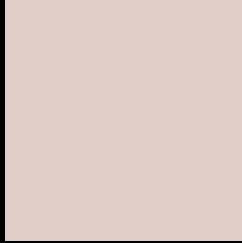
Large Text (above 18pt) WCAG AA × Fail

Any Text WCAG AA × Fail

Large Text (above 18pt) WCAG AAA × Fail

Any Text WCAG AAA × Fail

# Black Background



This preview shows how the Hex color E0CDC7 looks on a black background.

## Color Contrast Check

Large Text (above 18pt) WCAG AA ✓ Pass

Any Text WCAG AA ✓ Pass

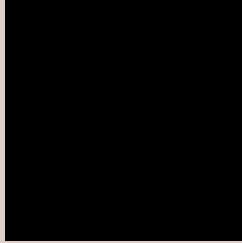
Large Text (above 18pt) WCAG AAA ✓ Pass

Any Text WCAG AAA ✓ Pass

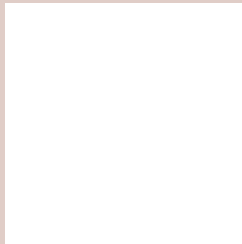
If you want to check with other color combinations, try the [Color Contrast Checker](#).



## Hex E0CDC7 Background



This preview shows how black text looks on a background with the Hex color E0CDC7.

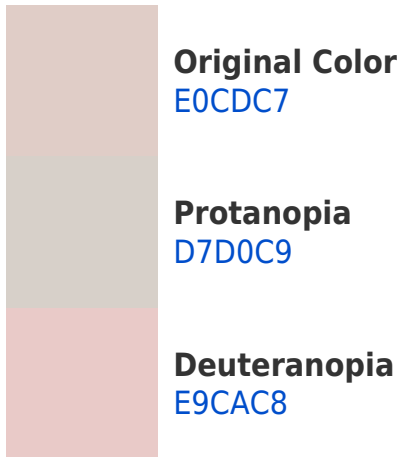


This preview shows how white text looks on a background with the Hex color E0CDC7.

# Color Blindness Simulation

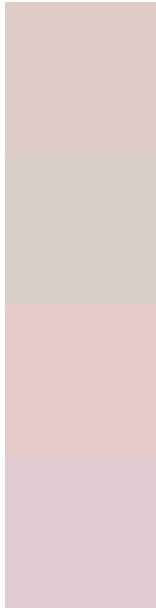
Color vision deficiency is a very complex topic, and I could not describe the different causes any better than Wikipedia does, so if you want to learn more, you should check out their [article about color blindness](#).

## Dichromacy





# Trichromacy



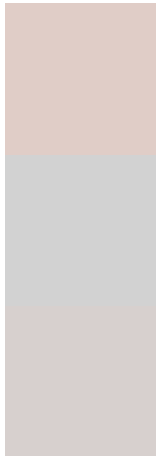
**Original Color**  
E0CDC7

**Protanomaly**  
DACFC8

**Deuteranomaly**  
E6CBC8

**Tritanomaly**  
E2CBD3

# Monochromacy



**Original Color**  
E0CDC7

**Achromatopsia**  
D2D2D2

**Achromatomaly**  
D7D0CE

# CSS Examples

## Text

The CSS property to change the color of the text to Hex E0CDC7 is called "color". The color property can be set on classes, ids or directly on the HTML element.

This example shows how text in the color #E0CDC7 looks like.

```
.text, #text, p{  
    color:#E0CDC7  
}
```

If you want to add a text shadow in that color use the text-shadow property, you can generate a text shadow directly with our [CSS Text Shadow Generator](#).

Here you see how black text with a 4 pixel #E0CDC7 colored shadow looks like.

```
.shadow{ text-shadow: 4px 4px 2px #E0CDC7  
}
```

## Border

The CSS property to change the border of an element to Hex E0CDC7 is called "border". The border property can be set on classes, ids or directly on the HTML element.

This example shows the color as border, it can be applied via the CSS property "border" or "border-color".

```
.border, #border, table{ border:4px solid  
#E0CDC7 }
```

If only the border color should be changed use the property `border-color`.

```
.border{ border-color:#E0CDC7 }
```

If you want to add a box shadow in that color use:

Here you see how a box with a 4 pixel #E0CDC7 colored shadow looks like.

```
.boxshadow{ -moz-box-shadow:4px 4px 4px  
4px #E0CDC7; -webkit-box-shadow:4px 4px  
4px 4px #E0CDC7; box-shadow:4px 4px 4px  
4px #E0CDC7 }
```

# Background

The CSS property to change the background color of an element to Hex E0CDC7 is called "background". The background property can be set on classes, ids or directly on the HTML element.

```
.background, #background, body{  
background:#E0CDC7 }
```

If only the background color should be changed can be used:

```
.background{ background-color:#E0CDC7 }
```

This example shows the color as background, it is applied via the CSS property "background".

To optimize and compress your CSS code, you can use our [online CSS compressor and optimizer](#) based on csstidy. If you want to create a linear or radial gradient as background or border, check our [CSS Gradient Generator](#).



Hey! You found this booklet interesting? Support Converting Colors with the new Membership Option!

The pro membership hides all ads, plus gives you double the colors in the color bucket, and more awesome pro features!

**[Learn more, Memberships starting at \\$2.50/m!](#)**

**Follow me  
on Twitter!**

@ConvertingColor