

Converting Colors

Hex(E0CDD2)

Have a look what the booklet for
Hex(E0CDD2) contains.

Hex(E0CDD2)	3
<i>Conversions</i>	4
<i>Details</i>	6
<i>Harmonies</i>	11
<i>Previews</i>	23
<i>Color Blindness Simulation</i>	26
<i>CSS Examples</i>	29

Color

Hex(E0CDD2)

Conversions

Conversions Part 1

Format	Color
Hex	E0CDD2
RGB	224, 205, 210
RGB Percent	88%, 80%, 82%
CMY	0.1216, 0.1961, 0.1765
CMYK	0.00, 0.08, 0.06, 0.12
HSL	344°, 23%, 84%
HSV	344°, 8%, 88%
XYZ	64.2046, 64.1631, 69.9735
YIQ	211.2510, 9.7190, 5.5830

Conversions

Conversions Part 2

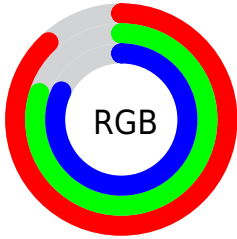
Format	Color
R _Y B	224, 205, 210
Decimal	14732754
CIE Lab	84.05, 7.46, -0.09
CIE LCh	84, 7.460, 359.300
Yxy	64.1631, 0.3237, 0.3235
Android (android.graphics.Color)	4292922834 (0xFFE0CDD2)
YUV	211.2510, -0.6167, 11.1809
Hunter-Lab	80.1019, 2.8962, 4.2781

Details

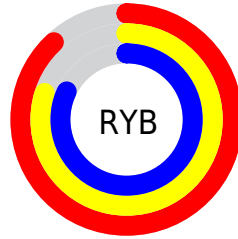
The Hex color **E0CDD2** is a light color, and the websafe version is hex **CCCCCC**. A complement of this color would be **CDE0DB**, and the grayscale version is **D3D3D3**.

A 20% lighter version of the original color is **FFFFFF**, and **A9979C** is the 20% darker color. If you saturate the color by 10%, you get **E0B7C1**, and if you desaturate by 10%, it is **E0E3E3**.

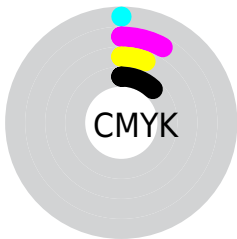
Distribution



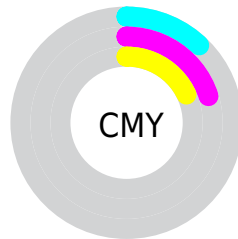
- Red (88%)
- Green (80%)
- Blue (82%)



- Red (88%)
- Yellow (80%)
- Blue (82%)



- Cyan (0%)
- Magenta (8%)
- Yellow (6%)
- Black (12%)



- Cyan (12%)
- Magenta (20%)
- Yellow (18%)

Brightness & Saturation Gradients

These gradients show how the Hex color E0CDD2 changes by changing the brightness by 10 percent. The first figure shows a shift by +10% for each color and the second figure -10%.

Similar to the brightness gradients but the following saturation gradients show a change of the Hex color E0CDD2 by changing the saturation by 10% instead.

 E0CDD2

FFFFFF

 E0CDD2

 C4B2B6

 A9979C

 8E7D82

 756468

 5C4C50

 44353A

 2E2024

 1A090F

 000000

 E0CDD2

 E0CDD2

 E0B7C1

 E0E3E3

 E0A0B1

 E0FAF3

 E08AA0

 E0FFFF

 E07390

 E05D7F

 E0476F

 E0305E

 E01A4E

 E0033D

Harmonies

Analogous

The Analogous color harmony consists of three colors that are next to each other on the color wheel.



DBCED9



E0CDD2



E1CDCB

Triad

The Triadic color harmony groups three colors that are evenly spaced from another and form a triangle on the color wheel.



E0CDD2



D0D3C5



C4D4DD

Complementary

The Complementary color scheme is a pair of colors which are on the opposite of each other on the color wheel.



E0CDD2



CDE0DB

Split Complementary

Split-complementary colors differ from the complementary color scheme. The scheme consists of three colors, the original color and two neighbors of the complement color.



C1D6D8



E0CDD2



C8D5CA

Square

The Square scheme is like the rectangle color scheme, but the four colors are evenly spaced on the color wheel.



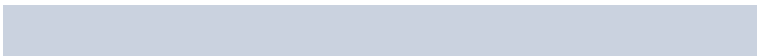
E0CDD2



D8D1C4



C2D6D1



CAD2DF

Rectangle

The Rectangle color scheme consists of four colors that form a rectangle on the color wheel.



E0CDD2



E0CEC7



C2D6D1



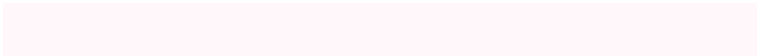
C2D5DC

Sweetspot

The Sweet Spot groups the original color and five complimentary colors.



E0CDD2



FFF7F9



DBCDE0



807A7C



000000



808080

Same Dimension

The Same Dimension uses a secret algorithm to generate beautiful new colors.



E0CDD2



FFE6EC



E0D1CD



706568



B0002E



30000D

Inverse Universe

The Inverse Universe completely reimagines the original color for something new.



E0CDD2



FFE6EC



CDDCE0



706568



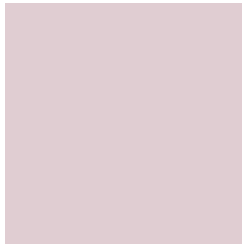
B0002E



30000D

Previews

White Background



This preview shows how the Hex color E0CDD2 looks on a white background.

Color Contrast Check

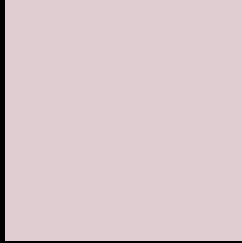
Large Text (above 18pt) WCAG AA × Fail

Any Text WCAG AA × Fail

Large Text (above 18pt) WCAG AAA × Fail

Any Text WCAG AAA × Fail

Black Background



This preview shows how the Hex color E0CDD2 looks on a black background.

Color Contrast Check

Large Text (above 18pt) WCAG AA ✓ Pass

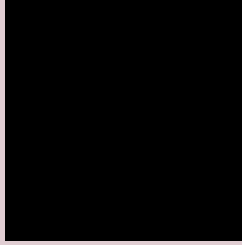
Any Text WCAG AA ✓ Pass

Large Text (above 18pt) WCAG AAA ✓ Pass

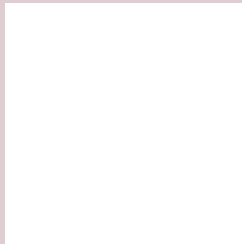
Any Text WCAG AAA ✓ Pass

If you want to check with other color combinations, try the [Color Contrast Checker](#).

Hex E0CDD2 Background



This preview shows how black text looks on a background with the Hex color E0CDD2.

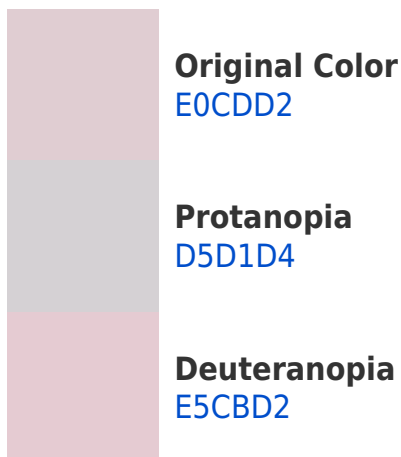


This preview shows how white text looks on a background with the Hex color E0CDD2.

Color Blindness Simulation

Color vision deficiency is a very complex topic, and I could not describe the different causes any better than Wikipedia does, so if you want to learn more, you should check out their [article about color blindness](#).

Dichromacy



Trichromacy



Original Color
E0CDD2

Protanomaly
D9D0D3

Deuteranomaly
E3CCD2

Tritanomaly
E1CCD8

Monochromacy



Original Color
E0CDD2

Achromatopsia
D3D3D3

Achromatomaly
D8D1D3

CSS Examples

Text

The CSS property to change the color of the text to Hex E0CDD2 is called "color". The color property can be set on classes, ids or directly on the HTML element.

This example shows how text in the color #E0CDD2 looks like.

```
.text, #text, p{  
    color:#E0CDD2  
}
```

If you want to add a text shadow in that color use the text-shadow property, you can generate a text shadow directly with our [CSS Text Shadow Generator](#).

Here you see how black text with a 4 pixel #E0CDD2 colored shadow looks like.

```
.shadow{ text-shadow: 4px 4px 2px #E0CDD2
}
```

Border

The CSS property to change the border of an element to Hex E0CDD2 is called "border". The border property can be set on classes, ids or directly on the HTML element.

This example shows the color as border, it can be applied via the CSS property "border" or "border-color".

```
.border, #border, table{ border:4px solid
#E0CDD2 }
```

If only the border color should be changed use the property `border-color`.

```
.border{ border-color:#E0CDD2 }
```

If you want to add a box shadow in that color use:

Here you see how a box with a 4 pixel #E0CDD2 colored shadow looks like.

```
.boxshadow{ -moz-box-shadow:4px 4px 4px  
4px #E0CDD2; -webkit-box-shadow:4px 4px  
4px 4px #E0CDD2; box-shadow:4px 4px 4px  
4px #E0CDD2 }
```

Background

The CSS property to change the background color of an element to Hex E0CDD2 is called "background". The background property can be set on classes, ids or directly on the HTML element.

```
.background, #background, body{  
background:#E0CDD2 }
```

If only the background color should be changed can be used:

```
.background{ background-color:#E0CDD2 }
```

This example shows the color as background, it is applied via the CSS property "background".

To optimize and compress your CSS code, you can use our [online CSS compressor and optimizer](#) based on csstidy. If you want to create a linear or radial gradient as background or border, check our [CSS Gradient Generator](#).

Hey! You found this booklet interesting? Support Converting Colors with the new Membership Option!

The pro membership hides all ads, plus gives you double the colors in the color bucket, and more awesome pro features!

[Learn more, Memberships starting at \\$2.50/m!](#)

**Follow me
on Twitter!**

@ConvertingColor