

Converting Colors

Hex(E0D0D2)

Have a look what the booklet for
Hex(E0D0D2) contains.

Hex(E0D0D2)	3
<i>Conversions</i>	4
<i>Details</i>	6
<i>Harmonies</i>	11
<i>Previews</i>	23
<i>Color Blindness Simulation</i>	26
<i>CSS Examples</i>	29

Color

Hex(E0D0D2)

Conversions

Conversions Part 1

Format	Color
Hex	E0D0D2
RGB	224, 208, 210
RGB Percent	88%, 82%, 82%
CMY	0.1216, 0.1843, 0.1765
CMYK	0.00, 0.07, 0.06, 0.12
HSL	352°, 21%, 85%
HSV	352°, 7%, 88%
XYZ	64.9292, 65.6122, 70.2150
YIQ	213.0120, 8.8940, 4.0140

Conversions

Conversions Part 2

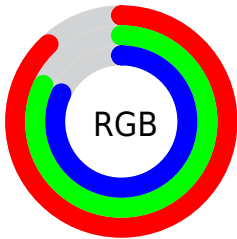
Format	Color
R _Y B	224, 208, 210
Decimal	14733522
CIE Lab	84.80, 5.88, 1.00
CIE LCh	85, 5.965, 9.645
Yxy	65.6122, 0.3234, 0.3268
Android (android.graphics.Color)	4292923602 (0xFFE0D0D2)
YUV	213.0120, -1.4849, 9.6365
Hunter-Lab	81.0014, 1.3300, 5.3061

Details

The Hex color **E0D0D2** is a light color, and the websafe version is hex **CCCCCC**. A complement of this color would be **D0E0DE**, and the grayscale version is **D5D5D5**.

A 20% lighter version of the original color is **FFFFFF**, and **A99A9C** is the 20% darker color. If you saturate the color by 10%, you get **E0BABE**, and if you desaturate by 10%, it is **E0E6E6**.

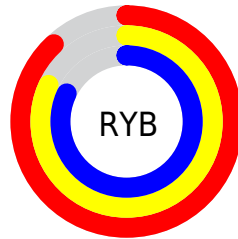
Distribution



Red (88%)

Green (82%)

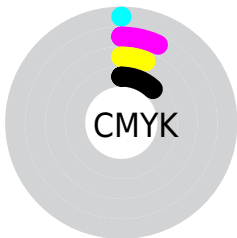
Blue (82%)



Red (88%)

Yellow (82%)

Blue (82%)

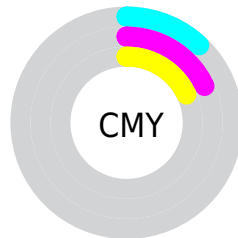


Cyan (0%)

Magenta (7%)

Yellow (6%)

Black (12%)



Cyan (12%)

Magenta (18%)

Yellow (18%)

Brightness & Saturation Gradients

These gradients show how the Hex color E0D0D2 changes by changing the brightness by 10 percent. The first figure shows a shift by +10% for each color and the second figure -10%.

Similar to the brightness gradients but the following saturation gradients show a change of the Hex color E0D0D2 by changing the saturation by 10% instead.

 E0D0D2

FFFFFF

 E0D0D2

 C4B4B6

 A99A9C

 8E8082

 756768

 5C4F50

 44383A

 2E2224

 1A0D0F

 000000

 E0D0D2

 E0D0D2

 E0BABE

 E0E6E6

 E0A3AB

 E0FDF9

 E08D97

 E0FFFF

 E07684

 E06070

 E04A5C

 E03349

 E01D35

 E00622

Harmonies

Analogous

The Analogous color harmony consists of three colors that are next to each other on the color wheel.



DDD0D8



E0D0D2



E0D1CD

Triad

The Triadic color harmony groups three colors that are evenly spaced from another and form a triangle on the color wheel.



E0D0D2



D0D6CB



CAD5DE

Complementary

The Complementary color scheme is a pair of colors which are on the opposite of each other on the color wheel.



E0D0D2



D0E0DE

Split Complementary

Split-complementary colors differ from the complementary color scheme. The scheme consists of three colors, the original color and two neighbors of the complement color.



C7D7DB



E0D0D2



CAD7D0

Square

The Square scheme is like the rectangle color scheme, but the four colors are evenly spaced on the color wheel.



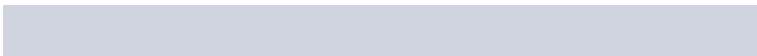
E0D0D2



D7D4C9



C7D7D5



D0D4DF

Rectangle

The Rectangle color scheme consists of four colors that form a rectangle on the color wheel.



E0D0D2



DED1CA



C7D7D5



C9D6DD

Sweetspot

The Sweet Spot groups the original color and five complimentary colors.



E0D0D2



FFFAFB



DED0E0



807D7D



000000



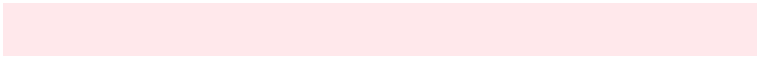
808080

Same Dimension

The Same Dimension uses a secret algorithm to generate beautiful new colors.



E0D0D2



FFE8EB



E0D6D0



706566



B00016



300006

Inverse Universe

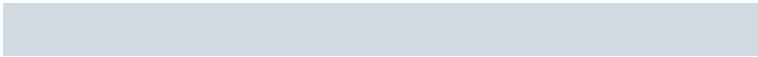
The Inverse Universe completely reimagines the original color for something new.



E0D0D2



FFE8EB



D0DAE0



706566



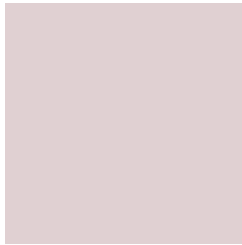
B00016



300006

Previews

White Background



This preview shows how the Hex color E0D0D2 looks on a white background.

Color Contrast Check

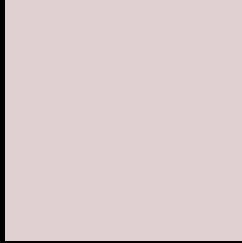
Large Text (above 18pt) WCAG AA × Fail

Any Text WCAG AA × Fail

Large Text (above 18pt) WCAG AAA × Fail

Any Text WCAG AAA × Fail

Black Background



This preview shows how the Hex color E0D0D2 looks on a black background.

Color Contrast Check

Large Text (above 18pt) WCAG AA ✓ Pass

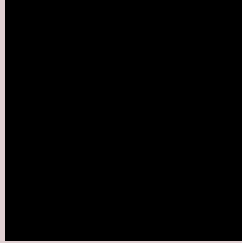
Any Text WCAG AA ✓ Pass

Large Text (above 18pt) WCAG AAA ✓ Pass

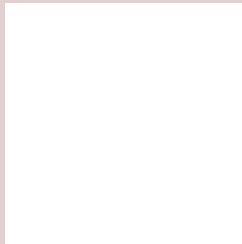
Any Text WCAG AAA ✓ Pass

If you want to check with other color combinations, try the [Color Contrast Checker](#).

Hex E0D0D2 Background



This preview shows how black text looks on a background with the Hex color E0D0D2.

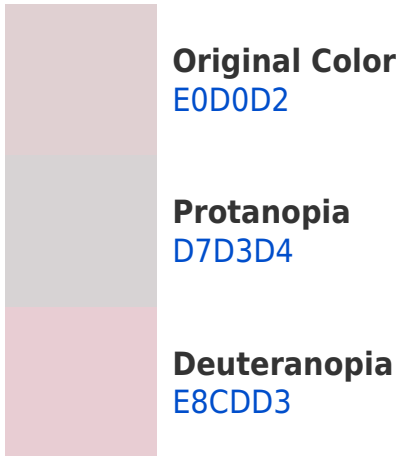


This preview shows how white text looks on a background with the Hex color E0D0D2.

Color Blindness Simulation

Color vision deficiency is a very complex topic, and I could not describe the different causes any better than Wikipedia does, so if you want to learn more, you should check out their [article about color blindness](#).

Dichromacy



Trichromacy



Original Color
E0D0D2

Protanomaly
DAD2D3

Deuteranomaly
E5CED3

Tritanomaly
E1CFDA

Monochromacy



Original Color
E0D0D2

Achromatopsia
D5D5D5

Achromatomaly
D9D3D4

CSS Examples

Text

The CSS property to change the color of the text to Hex E0D0D2 is called "color". The color property can be set on classes, ids or directly on the HTML element.

This example shows how text in the color #E0D0D2 looks like.

```
.text, #text, p{  
    color:#E0D0D2  
}
```

If you want to add a text shadow in that color use the text-shadow property, you can generate a text shadow directly with our [CSS Text Shadow Generator](#).

Here you see how black text with a 4 pixel #E0D0D2 colored shadow looks like.

```
.shadow{ text-shadow: 4px 4px 2px #E0D0D2
}
```

Border

The CSS property to change the border of an element to Hex E0D0D2 is called "border". The border property can be set on classes, ids or directly on the HTML element.

This example shows the color as border, it can be applied via the CSS property "border" or "border-color".

```
.border, #border, table{ border:4px solid
#E0D0D2 }
```

If only the border color should be changed use the property `border-color`.

```
.border{ border-color:#E0D0D2 }
```

If you want to add a box shadow in that color use:

Here you see how a box with a 4 pixel #E0D0D2 colored shadow looks like.

```
.boxshadow{ -moz-box-shadow:4px 4px 4px  
4px #E0D0D2; -webkit-box-shadow:4px 4px  
4px 4px #E0D0D2; box-shadow:4px 4px 4px  
4px #E0D0D2 }
```

Background

The CSS property to change the background color of an element to Hex E0D0D2 is called "background". The background property can be set on classes, ids or directly on the HTML element.

```
.background, #background, body{  
background:#E0D0D2 }
```

If only the background color should be changed can be used:

```
.background{ background-color:#E0D0D2 }
```

This example shows the color as background, it is applied via the CSS property "background".

To optimize and compress your CSS code, you can use our [online CSS compressor and optimizer](#) based on csstidy. If you want to create a linear or radial gradient as background or border, check our [CSS Gradient Generator](#).

Hey! You found this booklet interesting? Support Converting Colors with the new Membership Option!

The pro membership hides all ads, plus gives you double the colors in the color bucket, and more awesome pro features!

[Learn more, Memberships starting at \\$2.50/m!](#)

**Follow me
on Twitter!**

@ConvertingColor