

# Converting Colors

Hex(E11861)

Have a look what the booklet for  
Hex(E11861) contains.

<b>Hex(E11861)</b> .....	3
<b><i>Conversions</i></b> .....	4
<b><i>Details</i></b> .....	6
<b><i>Harmonies</i></b> .....	11
<b><i>Previews</i></b> .....	23
<b><i>Color Blindness Simulation</i></b> .....	26
<b><i>CSS Examples</i></b> .....	29

**Color**

**Hex(E11861)**

# Conversions

## Conversions Part 1

<b>Format</b>	<b>Color</b>
Hex	E11861
RGB	225, 24, 97
RGB Percent	88%, 9%, 38%
CMY	0.1176, 0.9059, 0.6196
CMYK	0.00, 0.89, 0.57, 0.12
HSL	338°, 81%, 49%
HSV	338°, 89%, 88%
XYZ	33.5356, 17.5239, 12.9242
YIQ	92.4210, 96.3630, 65.3150

# Conversions

## Conversions Part 2

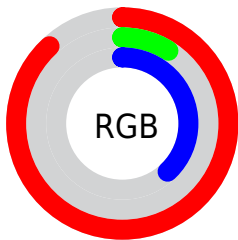
<b>Format</b>	<b>Color</b>
<b>R<sub>YB</sub></b>	225, 24, 97
Decimal	14751841
CIE Lab	48.91, 73.51, 13.63
CIE LCh	49, 74.766, 10.503
Yxy	17.5239, 0.5241, 0.2739
Android (android.graphics.Color)	4292941921 (0xFFE11861)
YUV	92.4210, 2.2574, 116.2718
Hunter-Lab	41.8615, 69.7402, 10.9981

# Details

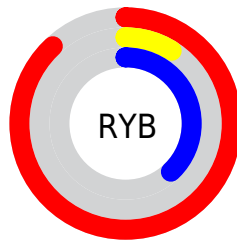
The Hex color **E11861** is a dark color, and the websafe version is hex **FF3366**. The color can be described as dark washed rose. A complement of this color would be **18E198**, and the grayscale version is **5C5C5C**.

A 20% lighter version of the original color is **FF6393**, and **A20033** is the 20% darker color. If you saturate the color by 10%, you get **E10253**, and if you desaturate by 10%, it is **E12F6F**.

# Distribution



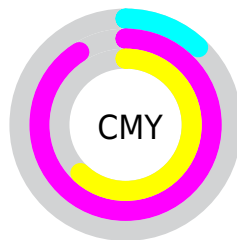
- Red (88%)
- Green (9%)
- Blue (38%)



- Red (88%)
- Yellow (9%)
- Blue (38%)



- Cyan (0%)
- Magenta (89%)
- Yellow (57%)
- Black (12%)



- Cyan (12%)
- Magenta (91%)
- Yellow (62%)

# Brightness & Saturation Gradients

These gradients show how the Hex color E11861 changes by changing the brightness by 10 percent. The first figure shows a shift by +10% for each color and the second figure -10%.

Similar to the brightness gradients but the following saturation gradients show a change of the Hex color E11861 by changing the saturation by 10% instead.



 E11861

 E11861

FFFFFF

 C1004A

 FF6393

 A20033

 FF81AE

 83001F

 FF9EC9

 650006

 FFBC E5


 480004

 FFDAFF

 270001

 FFF8FF

 000000

 E11861

 E11861

 E10253

 E12F6F

 E10052

 E1457E

 E15C8C

 E1729A

 E189A9

 E19FB7

 E1B6C5

 E1CCD4

 E1E3E2

# Harmonies

## Analogous

The Analogous color harmony consists of three colors that are next to each other on the color wheel.



CE2DA0



E11861



D33F23

# Triad

The Triadic color harmony groups three colors that are evenly spaced from another and form a triangle on the color wheel.



E11861



2B8600



0087ED

# Complementary

The Complementary color scheme is a pair of colors which are on the opposite of each other on the color wheel.



E11861



18E198

# Split Complementary

Split-complementary colors differ from the complementary color scheme. The scheme consists of three colors, the original color and two neighbors of the complement color.



008EC6



E11861



008D47

# Square

The Square scheme is like the rectangle color scheme, but the four colors are evenly spaced on the color wheel.



E11861



797900



008F8A



0075F3

# Rectangle

The Rectangle color scheme consists of four colors that form a rectangle on the color wheel.



E11861



BC5700



008F8A



008AE3



# Sweetspot

The Sweet Spot groups the original color and five complimentary colors.



E11861



FFBAD3



9718E1



805766



000000



808080



# Same Dimension

The Same Dimension uses a secret algorithm to generate beautiful new colors.



E11861



FF005D



E13318



706569



B00040



300012



# Inverse Universe

The Inverse Universe completely reimagines the original color for something new.



E11861



FF005D



18C6E1



706569



B00040



300012



# Previews

## White Background



This preview shows how the Hex color E11861 looks on a white background.

## Color Contrast Check

Large Text (above 18pt) WCAG AA ✓ Pass

Any Text WCAG AA ✓ Pass

Large Text (above 18pt) WCAG AAA ✓ Pass

Any Text WCAG AAA × Fail

# Black Background



## Color Contrast Check

Large Text (above 18pt) WCAG AA ✓ Pass

Any Text WCAG AA ✓ Pass

Large Text (above 18pt) WCAG AAA ✓ Pass

Any Text WCAG AAA × Fail

If you want to check with other color combinations, try the [Color Contrast Checker](#).



## Hex E11861 Background



This preview shows how black text looks on a background with the Hex color E11861.



This preview shows how white text looks on a background with the Hex color E11861.

# Color Blindness Simulation

Color vision deficiency is a very complex topic, and I could not describe the different causes any better than Wikipedia does, so if you want to learn more, you should check out their [article about color blindness](#).

## Dichromacy



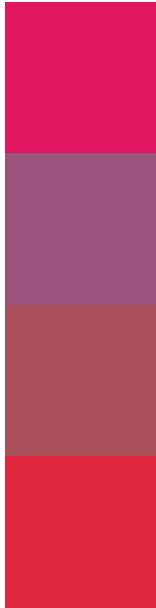
**Original Color**  
E11861

**Protanopia**  
71748B

**Deuteranopia**  
8A7058



# Trichromacy



**Original Color**  
E11861

**Protanomaly**  
9A537C

**Deuteranomaly**  
AA505B

**Tritanomaly**  
E0253F

# Monochromacy



**Original Color**  
E11861

**Achromatopsia**  
5C5C5C

**Achromatomaly**  
8C435E

# CSS Examples

## Text

The CSS property to change the color of the text to Hex E11861 is called "color". The color property can be set on classes, ids or directly on the HTML element.

This example shows how text in the color #E11861 looks like.

```
.text, #text, p{  
    color:#E11861  
}
```

If you want to add a text shadow in that color use the text-shadow property, you can generate a text shadow directly with our [CSS Text Shadow Generator](#).

Here you see how black text with a 4 pixel #E11861 colored shadow looks like.

```
.shadow{ text-shadow: 4px 4px 2px #E11861
}
```

## Border

The CSS property to change the border of an element to Hex E11861 is called "border". The border property can be set on classes, ids or directly on the HTML element.

This example shows the color as border, it can be applied via the CSS property "border" or "border-color".

```
.border, #border, table{ border:4px solid
#E11861 }
```

If only the border color should be changed use the property `border-color`.

```
.border{ border-color:#E11861 }
```

If you want to add a box shadow in that color use:

Here you see how a box with a 4 pixel #E11861 colored shadow looks like.

```
.boxshadow{ -moz-box-shadow:4px 4px 4px  
4px #E11861; -webkit-box-shadow:4px 4px  
4px 4px #E11861; box-shadow:4px 4px 4px  
4px #E11861 }
```

# Background

The CSS property to change the background color of an element to Hex E11861 is called "background". The background property can be set on classes, ids or directly on the HTML element.

```
.background, #background, body{  
background:#E11861 }
```

If only the background color should be changed can be used:

```
.background{ background-color:#E11861 }
```

This example shows the color as background, it is applied via the CSS property "background".

To optimize and compress your CSS code, you can use our [online CSS compressor and optimizer](#) based on csstidy. If you want to create a linear or radial gradient as background or border, check our [CSS Gradient Generator](#).



Hey! You found this booklet interesting? Support Converting Colors with the new Membership Option!

The pro membership hides all ads, plus gives you double the colors in the color bucket, and more awesome pro features!

**[Learn more, Memberships starting at \\$2.50/m!](#)**

**Follow me  
on Twitter!**

@ConvertingColor