

Converting Colors

Hex(E12E6F)

Have a look what the booklet for
Hex(E12E6F) contains.

Hex(E12E6F)	3
<i>Conversions</i>	4
<i>Details</i>	6
<i>Harmonies</i>	11
<i>Previews</i>	23
<i>Color Blindness Simulation</i>	26
<i>CSS Examples</i>	29

Color

Hex(E12E6F)

Conversions

Conversions Part 1

Format	Color
Hex	E12E6F
RGB	225, 46, 111
RGB Percent	88%, 18%, 44%
CMY	0.1176, 0.8196, 0.5647
CMYK	0.00, 0.80, 0.51, 0.12
HSL	338°, 75%, 53%
HSV	338°, 80%, 88%
XYZ	34.8976, 19.1092, 16.8881
YIQ	106.9310, 85.8190, 58.1630

Conversions

Conversions Part 2

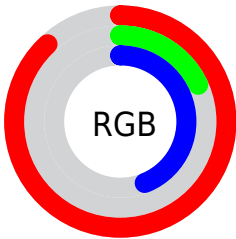
Format	Color
R_{YB}	225, 46, 111
Decimal	14757487
CIE _{Lab}	50.81, 70.04, 7.74
CIE _{LCh}	51, 70.464, 6.307
Yxy	19.1092, 0.4922, 0.2695
Android (android.graphics.Color)	4292947567 (0xFFE12E6F)
YUV	106.9310, 2.0060, 103.5465
Hunter-Lab	43.7141, 65.9993, 7.6944

Details

The Hex color **E12E6F** is a dark color, and the websafe version is hex **CC0066**. The color can be described as dark washed rose. A complement of this color would be **2EE1A0**, and the grayscale version is **6B6B6B**.

A 20% lighter version of the original color is **FF6EA2**, and **A30040** is the 20% darker color. If you saturate the color by 10%, you get **E11861**, and if you desaturate by 10%, it is **E1447D**.

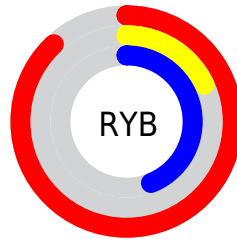
Distribution



Red (88%)

Green (18%)

Blue (44%)



Red (88%)

Yellow (18%)

Blue (44%)

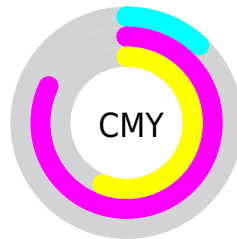


Cyan (0%)

Magenta (80%)

Yellow (51%)

Black (12%)



Cyan (12%)

Magenta (82%)

Yellow (56%)

Brightness & Saturation Gradients

These gradients show how the Hex color E12E6F changes by changing the brightness by 10 percent. The first figure shows a shift by +10% for each color and the second figure -10%.

Similar to the brightness gradients but the following saturation gradients show a change of the Hex color E12E6F by changing the saturation by 10% instead.

 E12E6F

 E12E6F

FFFFFF

 C20057

 FF6EA2

 A30040

 FF8CBD

 85002A

 FFA9D9

 670016


 FFC6F5

 4B0003


 FFE4FF

 2B0001

 000000

 E12E6F

 E12E6F

 E11861

 E1447D

 E10152

 E15B8C

 E10052

 E1729A

 E188A8

 E19FB7

 E1B5C5

 E1CBD3

 E1E2E2

 E1F8F0

Harmonies

Analogous

The Analogous color harmony consists of three colors that are next to each other on the color wheel.



C941AB



E12E6F



D84535

Triad

The Triadic color harmony groups three colors that are evenly spaced from another and form a triangle on the color wheel.



E12E6F



468900



008CE8

Complementary

The Complementary color scheme is a pair of colors which are on the opposite of each other on the color wheel.



E12E6F



2EE1A0

Split Complementary

Split-complementary colors differ from the complementary color scheme. The scheme consists of three colors, the original color and two neighbors of the complement color.



0092BF



E12E6F



009045

Square

The Square scheme is like the rectangle color scheme, but the four colors are evenly spaced on the color wheel.



E12E6F



877B00



009385



007DF2

Rectangle

The Rectangle color scheme consists of four colors that form a rectangle on the color wheel.



E12E6F



C55A06



009385



008FDD

Sweetspot

The Sweet Spot groups the original color and five complimentary colors.



E12E6F



FFC2D8



9F2EE1



805B68



000000



808080

Same Dimension

The Same Dimension uses a secret algorithm to generate beautiful new colors.



E12E6F



FF0D65



E1462E



706569



B00040



300012

Inverse Universe

The Inverse Universe completely reimagines the original color for something new.



E12E6F



FF0D65



2EC9E1



706569



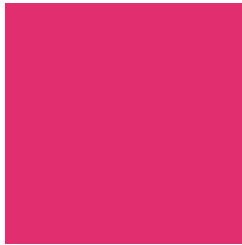
B00040



300012

Previews

White Background



This preview shows how the Hex color E12E6F looks on a white background.

Color Contrast Check

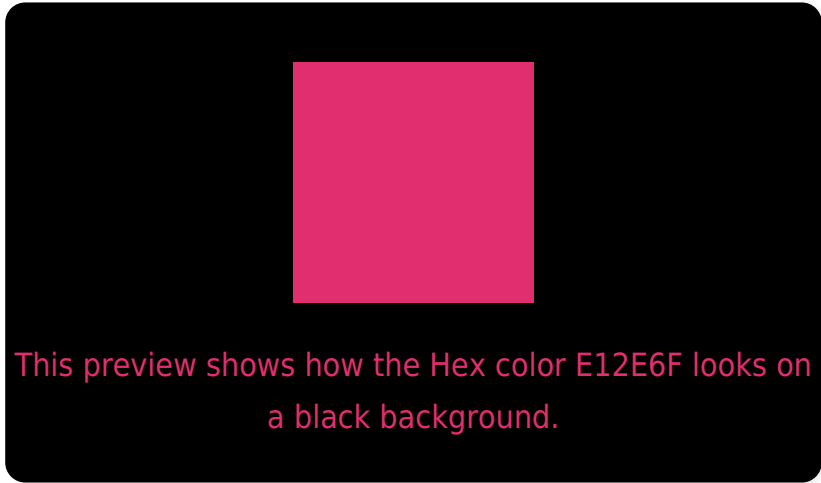
Large Text (above 18pt) WCAG AA ✓ Pass

Any Text WCAG AA × Fail

Large Text (above 18pt) WCAG AAA × Fail

Any Text WCAG AAA × Fail

Black Background



Color Contrast Check

Large Text (above 18pt) WCAG AA ✓ Pass

Any Text WCAG AA ✓ Pass

Large Text (above 18pt) WCAG AAA ✓ Pass

Any Text WCAG AAA × Fail

If you want to check with other color combinations, try the [Color Contrast Checker](#).

Hex E12E6F Background



This preview shows how black text looks on a background with the Hex color E12E6F.



This preview shows how white text looks on a background with the Hex color E12E6F.

Color Blindness Simulation

Color vision deficiency is a very complex topic, and I could not describe the different causes any better than Wikipedia does, so if you want to learn more, you should check out their [article about color blindness](#).

Dichromacy



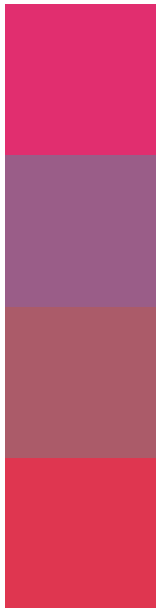
Original Color
E12E6F

Protanopia
727897

Deuteranopia
8C7566



Trichromacy



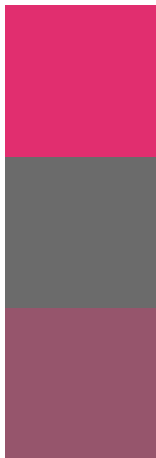
Original Color
E12E6F

Protanomaly
9A5D88

Deuteranomaly
AB5B69

Tritanomaly
DF3650

Monochromacy



Original Color
E12E6F

Achromatopsia
6B6B6B

Achromatomaly
96556C

CSS Examples

Text

The CSS property to change the color of the text to Hex E12E6F is called "color". The color property can be set on classes, ids or directly on the HTML element.

This example shows how text in the color #E12E6F looks like.

```
.text, #text, p{
  color:#E12E6F
}
```

If you want to add a text shadow in that color use the text-shadow property, you can generate a text shadow directly with our [CSS Text Shadow Generator](#).

Here you see how black text with a 4 pixel #E12E6F colored shadow looks like.

```
.shadow{ text-shadow: 4px 4px 2px #E12E6F
}
```

Border

The CSS property to change the border of an element to Hex E12E6F is called "border". The border property can be set on classes, ids or directly on the HTML element.

This example shows the color as border, it can be applied via the CSS property "border" or "border-color".

```
.border, #border, table{ border:4px solid
#E12E6F }
```

If only the border color should be changed use the property `border-color`.

```
.border{ border-color:#E12E6F }
```

If you want to add a box shadow in that color use:

Here you see how a box with a 4 pixel #E12E6F colored shadow looks like.

```
.boxshadow{ -moz-box-shadow:4px 4px 4px  
4px #E12E6F; -webkit-box-shadow:4px 4px  
4px 4px #E12E6F; box-shadow:4px 4px 4px  
4px #E12E6F }
```

Background

The CSS property to change the background color of an element to Hex E12E6F is called "background". The background property can be set on classes, ids or directly on the HTML element.

```
.background, #background, body{  
background:#E12E6F }
```

If only the background color should be changed can be used:

```
.background{ background-color:#E12E6F }
```

This example shows the color as background, it is applied via the CSS property "background".

To optimize and compress your CSS code, you can use our [online CSS compressor and optimizer](#) based on csstidy. If you want to create a linear or radial gradient as background or border, check our [CSS Gradient Generator](#).

Hey! You found this booklet interesting? Support Converting Colors with the new Membership Option!

The pro membership hides all ads, plus gives you double the colors in the color bucket, and more awesome pro features!

[Learn more, Memberships starting at \\$2.50/m!](#)

**Follow me
on Twitter!**

@ConvertingColor