

Converting Colors

Hex(E13C67)

Have a look what the booklet for
Hex(E13C67) contains.

Hex(E13C67)	3
<i>Conversions</i>	4
<i>Details</i>	6
<i>Harmonies</i>	11
<i>Previews</i>	23
<i>Color Blindness Simulation</i>	26
<i>CSS Examples</i>	29

Color

Hex(E13C67)

Conversions

Conversions Part 1

Format	Color
Hex	E13C67
RGB	225, 60, 103
RGB Percent	88%, 24%, 40%
CMY	0.1176, 0.7647, 0.5961
CMYK	0.00, 0.73, 0.54, 0.12
HSL	344°, 73%, 56%
HSV	344°, 73%, 88%
XYZ	35.1154, 20.2185, 14.8837
YIQ	114.2370, 84.5370, 48.3530

Conversions

Conversions Part 2

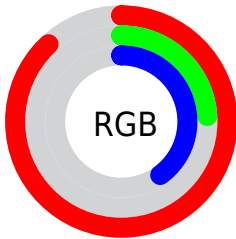
Format	Color
R_{YB}	225, 60, 103
Decimal	14761063
CIE _{Lab}	52.08, 65.31, 14.36
CIE _{LCh}	52, 66.873, 12.399
Yxy	20.2185, 0.5001, 0.2879
Android (android.graphics.Color)	4292951143 (0xFFE13C67)
YUV	114.2370, -5.5398, 97.1392
Hunter-Lab	44.9650, 60.7105, 11.8501

Details

The Hex color **E13C67** is a dark color, and the websafe version is hex **CC3366**. The color can be described as dark washed rose. A complement of this color would be **3CE1B6**, and the grayscale version is **727272**.

A 20% lighter version of the original color is **FF789A**, and **A30039** is the 20% darker color. If you saturate the color by 10%, you get **E12656**, and if you desaturate by 10%, it is **E15378**.

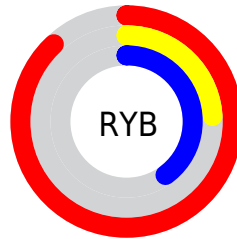
Distribution



Red (88%)

Green (24%)

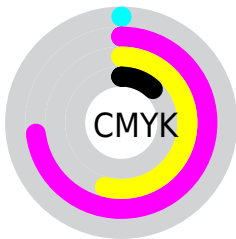
Blue (40%)



Red (88%)

Yellow (24%)

Blue (40%)

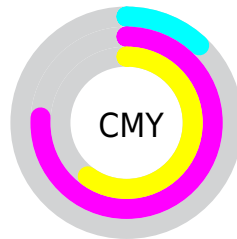


Cyan (0%)

Magenta (73%)

Yellow (54%)

Black (12%)



Cyan (12%)

Magenta (76%)

Yellow (60%)

Brightness & Saturation Gradients

These gradients show how the Hex color E13C67 changes by changing the brightness by 10 percent. The first figure shows a shift by +10% for each color and the second figure -10%.

Similar to the brightness gradients but the following saturation gradients show a change of the Hex color E13C67 by changing the saturation by 10% instead.

 E13C67

 E13C67

FFFFFF

 C2154F

 FF789A

 A30039

 FF94B4

 850024

 FFB1D0

 67000F

 FFCFEC

 4A0003


 FFECFF

 2C0001

 000000

 E13C67

 E13C67

 E12656

 E15378

 E10F46

 E16988

 E1003B

 E17F99

 E196AA

 E1ADBA

 E1C3CB

 E1DADB

 E1F0EC

 E1FFFD

Harmonies

Analogous

The Analogous color harmony consists of three colors that are next to each other on the color wheel.



D144A0



E13C67



D45231

Triad

The Triadic color harmony groups three colors that are evenly spaced from another and form a triangle on the color wheel.



E13C67



3C8D1A



008CEA

Complementary

The Complementary color scheme is a pair of colors which are on the opposite of each other on the color wheel.



E13C67



3CE1B6

Split Complementary

Split-complementary colors differ from the complementary color scheme. The scheme consists of three colors, the original color and two neighbors of the complement color.



0094C9



E13C67



009457

Square

The Square scheme is like the rectangle color scheme, but the four colors are evenly spaced on the color wheel.



E13C67



808100



009693



007BED

Rectangle

The Rectangle color scheme consists of four colors that form a rectangle on the color wheel.



E13C67



BE6405



009693



0090E2

Sweetspot

The Sweet Spot groups the original color and five complimentary colors.



E13C67



FFC7D6



B53CE1



805E67



000000



808080

Same Dimension

The Same Dimension uses a secret algorithm to generate beautiful new colors.



E13C67



FF1F59



E1633C



706568



B0002E



30000D

Inverse Universe

The Inverse Universe completely reimagines the original color for something new.



E13C67



FF1F59



3CBBE1



706568



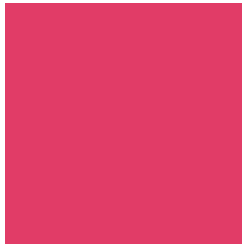
B0002E



30000D

Previews

White Background



This preview shows how the Hex color E13C67 looks on a white background.

Color Contrast Check

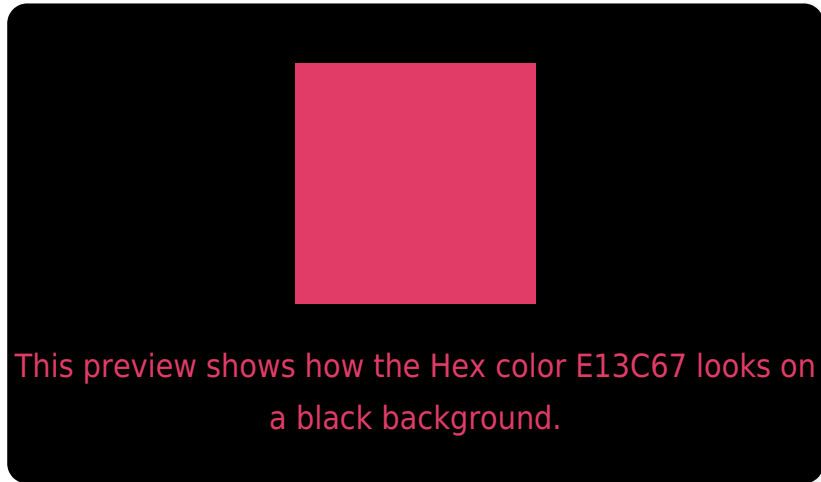
Large Text (above 18pt) WCAG AA ✓ Pass

Any Text WCAG AA × Fail

Large Text (above 18pt) WCAG AAA × Fail

Any Text WCAG AAA × Fail

Black Background



Color Contrast Check

Large Text (above 18pt) WCAG AA ✓ Pass

Any Text WCAG AA ✓ Pass

Large Text (above 18pt) WCAG AAA ✓ Pass

Any Text WCAG AAA × Fail

If you want to check with other color combinations, try the [Color Contrast Checker](#).

Hex E13C67 Background



This preview shows how black text looks on a background with the Hex color E13C67.



This preview shows how white text looks on a background with the Hex color E13C67.

Color Blindness Simulation

Color vision deficiency is a very complex topic, and I could not describe the different causes any better than Wikipedia does, so if you want to learn more, you should check out their [article about color blindness](#).

Dichromacy

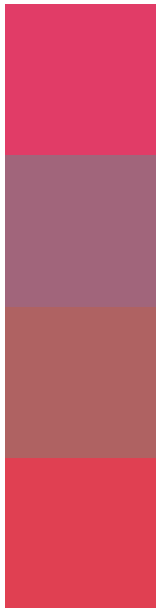


Original Color
E13C67

Protanopia
7C7C87

Deuteranopia
93785F

Trichromacy



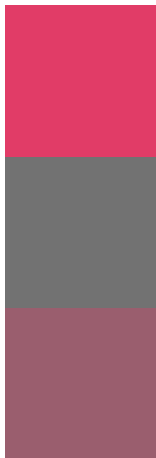
Original Color
E13C67

Protanomaly
A1657B

Deuteranomaly
AF6262

Tritanomaly
E04052

Monochromacy



Original Color
E13C67

Achromatopsia
727272

Achromatomaly
9A5E6E

CSS Examples

Text

The CSS property to change the color of the text to Hex E13C67 is called "color". The color property can be set on classes, ids or directly on the HTML element.

This example shows how text in the color #E13C67 looks like.

```
.text, #text, p{  
    color:#E13C67  
}
```

If you want to add a text shadow in that color use the text-shadow property, you can generate a text shadow directly with our [CSS Text Shadow Generator](#).

Here you see how black text with a 4 pixel #E13C67 colored shadow looks like.

```
.shadow{ text-shadow: 4px 4px 2px #E13C67
}
```

Border

The CSS property to change the border of an element to Hex E13C67 is called "border". The border property can be set on classes, ids or directly on the HTML element.

This example shows the color as border, it can be applied via the CSS property "border" or "border-color".

```
.border, #border, table{ border:4px solid
#E13C67 }
```

If only the border color should be changed use the property `border-color`.

```
.border{ border-color:#E13C67 }
```

If you want to add a box shadow in that color use:

Here you see how a box with a 4 pixel #E13C67 colored shadow looks like.

```
.boxshadow{ -moz-box-shadow:4px 4px 4px  
4px #E13C67; -webkit-box-shadow:4px 4px  
4px 4px #E13C67; box-shadow:4px 4px 4px  
4px #E13C67 }
```

Background

The CSS property to change the background color of an element to Hex E13C67 is called "background". The background property can be set on classes, ids or directly on the HTML element.

```
.background, #background, body{  
background:#E13C67 }
```

If only the background color should be changed can be used:

```
.background{ background-color:#E13C67 }
```

This example shows the color as background, it is applied via the CSS property "background".

To optimize and compress your CSS code, you can use our [online CSS compressor and optimizer](#) based on csstidy. If you want to create a linear or radial gradient as background or border, check our [CSS Gradient Generator](#).

Hey! You found this booklet interesting? Support Converting Colors with the new Membership Option!

The pro membership hides all ads, plus gives you double the colors in the color bucket, and more awesome pro features!

[Learn more, Memberships starting at \\$2.50/m!](#)

**Follow me
on Twitter!**

@ConvertingColor