

# Converting Colors

Hex(E14473)

Have a look what the booklet for  
Hex(E14473) contains.

<b>Hex(E14473)</b> .....	3
<i><b>Conversions</b></i> .....	4
<i><b>Details</b></i> .....	6
<i><b>Harmonies</b></i> .....	11
<i><b>Previews</b></i> .....	23
<i><b>Color Blindness Simulation</b></i> .....	26
<i><b>CSS Examples</b></i> .....	29

**Color**

**Hex(E14473)**

# Conversions

## Conversions Part 1

<b>Format</b>	<b>Color</b>
Hex	E14473
RGB	225, 68, 115
RGB Percent	88%, 27%, 45%
CMY	0.1176, 0.7333, 0.5490
CMYK	0.00, 0.70, 0.49, 0.12
HSL	342°, 72%, 57%
HSV	342°, 70%, 88%
XYZ	36.2130, 21.3796, 18.4377
YIQ	120.3010, 78.4850, 47.9010

# Conversions

## Conversions Part 2

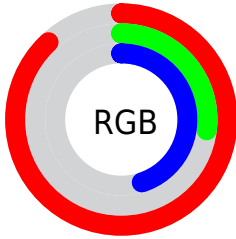
<b>Format</b>	<b>Color</b>
<b>R<sub>YB</sub></b>	225, 68, 115
Decimal	14763123
CIE <sub>Lab</sub>	53.36, 63.50, 8.94
CIE <sub>LCh</sub>	53, 64.126, 8.016
Yxy	21.3796, 0.4763, 0.2812
Android (android.graphics.Color)	4292953203 (0xFFE14473)
YUV	120.3010, -2.6134, 91.8210
Hunter-Lab	46.2381, 58.8819, 8.7244

# Details

The Hex color **E14473** is a dark color, and the websafe version is hex **CC3366**. The color can be described as middle muted rose. A complement of this color would be **44E1B2**, and the grayscale version is **787878**.

A 20% lighter version of the original color is **FF7EA7**, and **A40043** is the 20% darker color. If you saturate the color by 10%, you get **E12D63**, and if you desaturate by 10%, it is **E15A83**.

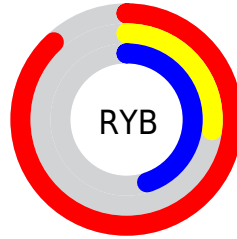
# Distribution



Red (88%)

Green (27%)

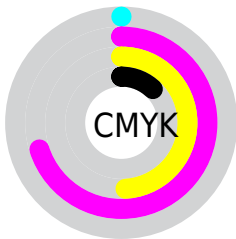
Blue (45%)



Red (88%)

Yellow (27%)

Blue (45%)

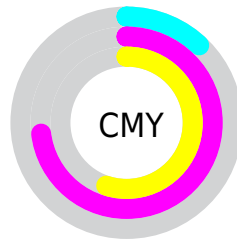


Cyan (0%)

Magenta (70%)

Yellow (49%)

Black (12%)



Cyan (12%)

Magenta (73%)

Yellow (55%)

# Brightness & Saturation Gradients

These gradients show how the Hex color E14473 changes by changing the brightness by 10 percent. The first figure shows a shift by +10% for each color and the second figure -10%.

Similar to the brightness gradients but the following saturation gradients show a change of the Hex color E14473 by changing the saturation by 10% instead.



 E14473

 E14473

FFFFFF

 C2225B

 FF7EA7

 A40043

 FF9BC2

 86002E

 FFB8DE

 680019

 FFD5FA

 4C0002

 FFF2FF

 2E0002


 000000

 E14473

 E14473

 E12D63

 E15A83

 E11753

 E17193

 E10044

 E188A2

 E10043

 E19EB2

 E1B4C2

 E1CBD2

 E1E1E1

 E1F8F1

 E1FFFF

# Harmonies

## Analogous

The Analogous color harmony consists of three colors that are next to each other on the color wheel.



CC4FAA



E14473



D8543E

# Triad

The Triadic color harmony groups three colors that are evenly spaced from another and form a triangle on the color wheel.



E14473



508F1B



0090E6

# Complementary

The Complementary color scheme is a pair of colors which are on the opposite of each other on the color wheel.



E14473



44E1B2

# Split Complementary

Split-complementary colors differ from the complementary color scheme. The scheme consists of three colors, the original color and two neighbors of the complement color.



0097C2



E14473



009654

# Square

The Square scheme is like the rectangle color scheme, but the four colors are evenly spaced on the color wheel.



E14473



8C8200



00998D



0081EE

# Rectangle

The Rectangle color scheme consists of four colors that form a rectangle on the color wheel.



E14473



C6651C



00998D



0093DD



# Sweetspot

The Sweet Spot groups the original color and five complimentary colors.



E14473



FFC9D9



B244E1



806069



000000



808080



# Same Dimension

The Same Dimension uses a secret algorithm to generate beautiful new colors.



E14473



FF2969



E16344



706568



B00035



30000F



# Inverse Universe

The Inverse Universe completely reimagines the original color for something new.



E14473



FF2969



44C2E1



706568



B00035

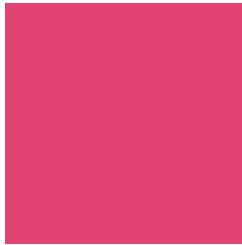


30000F



# Previews

## White Background



This preview shows how the Hex color E14473 looks on a white background.

## Color Contrast Check

Large Text (above 18pt) WCAG AA ✓ Pass

Any Text WCAG AA × Fail

Large Text (above 18pt) WCAG AAA × Fail

Any Text WCAG AAA × Fail

# Black Background



## Color Contrast Check

Large Text (above 18pt) WCAG AA ✓ Pass

Any Text WCAG AA ✓ Pass

Large Text (above 18pt) WCAG AAA ✓ Pass

Any Text WCAG AAA × Fail

If you want to check with other color combinations, try the [Color Contrast Checker](#).



## Hex E14473 Background



This preview shows how black text looks on a background with the Hex color E14473.

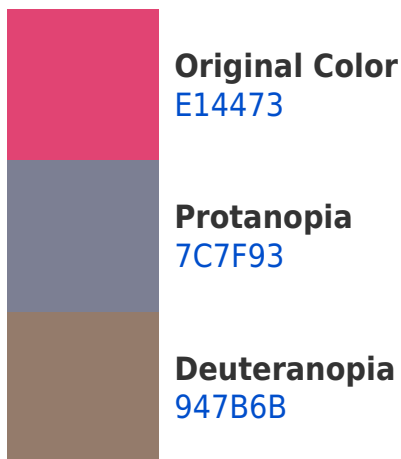


This preview shows how white text looks on a background with the Hex color E14473.

# Color Blindness Simulation

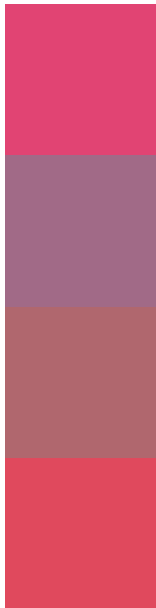
Color vision deficiency is a very complex topic, and I could not describe the different causes any better than Wikipedia does, so if you want to learn more, you should check out their [article about color blindness](#).

## Dichromacy





# Trichromacy



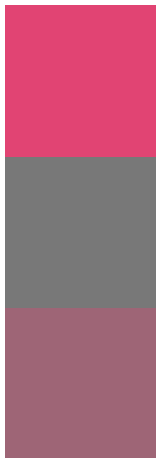
**Original Color**  
E14473

**Protanomaly**  
A16A87

**Deuteranomaly**  
B0676E

**Tritanomaly**  
E0495D

# Monochromacy



**Original Color**  
E14473

**Achromatopsia**  
787878

**Achromatomaly**  
9E6576

# CSS Examples

## Text

The CSS property to change the color of the text to Hex E14473 is called "color". The color property can be set on classes, ids or directly on the HTML element.

This example shows how text in the color #E14473 looks like.

```
.text, #text, p{  
    color:#E14473  
}
```

If you want to add a text shadow in that color use the text-shadow property, you can generate a text shadow directly with our [CSS Text Shadow Generator](#).

Here you see how black text with a 4 pixel #E14473 colored shadow looks like.

```
.shadow{ text-shadow: 4px 4px 2px #E14473
}
```

## Border

The CSS property to change the border of an element to Hex E14473 is called "border". The border property can be set on classes, ids or directly on the HTML element.

This example shows the color as border, it can be applied via the CSS property "border" or "border-color".

```
.border, #border, table{ border:4px solid
#E14473 }
```

If only the border color should be changed use the property `border-color`.

```
.border{ border-color:#E14473 }
```

If you want to add a box shadow in that color use:

Here you see how a box with a 4 pixel #E14473 colored shadow looks like.

```
.boxshadow{ -moz-box-shadow:4px 4px 4px  
4px #E14473; -webkit-box-shadow:4px 4px  
4px 4px #E14473; box-shadow:4px 4px 4px  
4px #E14473 }
```

# Background

The CSS property to change the background color of an element to Hex E14473 is called "background". The background property can be set on classes, ids or directly on the HTML element.

```
.background, #background, body{  
background:#E14473 }
```

If only the background color should be changed can be used:

```
.background{ background-color:#E14473 }
```

This example shows the color as background, it is applied via the CSS property "background".

To optimize and compress your CSS code, you can use our [online CSS compressor and optimizer](#) based on csstidy. If you want to create a linear or radial gradient as background or border, check our [CSS Gradient Generator](#).



Hey! You found this booklet interesting? Support Converting Colors with the new Membership Option!

The pro membership hides all ads, plus gives you double the colors in the color bucket, and more awesome pro features!

**[Learn more, Memberships starting at \\$2.50/m!](#)**

**Follow me  
on Twitter!**

@ConvertingColor