

Converting Colors

Hex(E14673)

Have a look what the booklet for
Hex(E14673) contains.

Hex(E14673)	3
<i>Conversions</i>	4
<i>Details</i>	6
<i>Harmonies</i>	11
<i>Previews</i>	23
<i>Color Blindness Simulation</i>	26
<i>CSS Examples</i>	29

Color

Hex(E14673)

Conversions

Conversions Part 1

Format	Color
Hex	E14673
RGB	225, 70, 115
RGB Percent	88%, 27%, 45%
CMY	0.1176, 0.7255, 0.5490
CMYK	0.00, 0.69, 0.49, 0.12
HSL	343°, 72%, 58%
HSV	343°, 69%, 88%
XYZ	36.3360, 21.6257, 18.4787
YIQ	121.4750, 77.9350, 46.8550

Conversions

Conversions Part 2

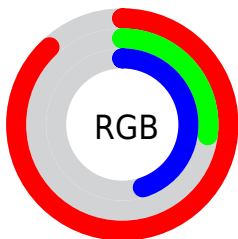
Format	Color
R_{YB}	225, 70, 115
Decimal	14763635
CIE _{Lab}	53.63, 62.77, 9.32
CIE _{LCh}	54, 63.454, 8.443
Yxy	21.6257, 0.4754, 0.2829
Android (android.graphics.Color)	4292953715 (0xFFE14673)
YUV	121.4750, -3.1922, 90.7914
Hunter-Lab	46.5034, 58.0922, 8.9928

Details

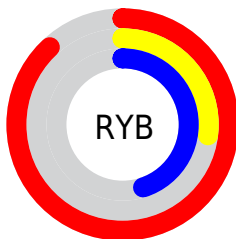
The Hex color **E14673** is a dark color, and the websafe version is hex **CC3366**. The color can be described as middle muted rose. A complement of this color would be **46E1B4**, and the grayscale version is **797979**.

A 20% lighter version of the original color is **FF80A7**, and **A40043** is the 20% darker color. If you saturate the color by 10%, you get **E13063**, and if you desaturate by 10%, it is **E15D83**.

Distribution



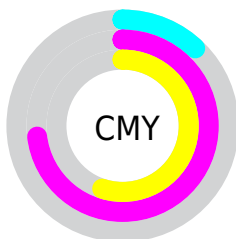
- Red (88%)
- Green (27%)
- Blue (45%)



- Red (88%)
- Yellow (27%)
- Blue (45%)



- Cyan (0%)
- Magenta (69%)
- Yellow (49%)
- Black (12%)



- Cyan (12%)
- Magenta (73%)
- Yellow (55%)

Brightness & Saturation Gradients

These gradients show how the Hex color E14673 changes by changing the brightness by 10 percent. The first figure shows a shift by +10% for each color and the second figure -10%.

Similar to the brightness gradients but the following saturation gradients show a change of the Hex color E14673 by changing the saturation by 10% instead.

 E14673

 E14673

FFFFFF

 C2255B

 FF80A7

 A40043

 FF9CC2

 86002E

 FFB9DE

 680019

 FFD6FA

 4C0002


 FFF4FF


 2F0002

 000000

 E14673

 E14673

 E13063

 E15D83

 E11953

 E17393

 E10343

 E18AA3

 E10041

 E1A0B3

 E1B7C3

 E1CDD3

 E1E3E3

 E1FAF3

 E1FFFF

Harmonies

Analogous

The Analogous color harmony consists of three colors that are next to each other on the color wheel.



CD50AA



E14673



D8563F

Triad

The Triadic color harmony groups three colors that are evenly spaced from another and form a triangle on the color wheel.



E14673



50901F



0091E6

Complementary

The Complementary color scheme is a pair of colors which are on the opposite of each other on the color wheel.



E14673



46E1B4

Split Complementary

Split-complementary colors differ from the complementary color scheme. The scheme consists of three colors, the original color and two neighbors of the complement color.



0098C3



E14673



009756

Square

The Square scheme is like the rectangle color scheme, but the four colors are evenly spaced on the color wheel.



E14673



8C8300



00998F



0082ED

Rectangle

The Rectangle color scheme consists of four colors that form a rectangle on the color wheel.



E14673



C5671E



00998F



0094DD

Sweetspot

The Sweet Spot groups the original color and five complimentary colors.



E14673



FFC9D9



B346E1



806069



000000



808080

Same Dimension

The Same Dimension uses a secret algorithm to generate beautiful new colors.



E14673



FF2B69



E16546



706568



B00033



30000E

Inverse Universe

The Inverse Universe completely reimagines the original color for something new.



E14673



FF2B69



46C2E1



706568



B00033



30000E

Previews

White Background



This preview shows how the Hex color E14673 looks on a white background.

Color Contrast Check

Large Text (above 18pt) WCAG AA ✓ Pass

Any Text WCAG AA × Fail

Large Text (above 18pt) WCAG AAA × Fail

Any Text WCAG AAA × Fail

Black Background



Color Contrast Check

Large Text (above 18pt) WCAG AA ✓ Pass

Any Text WCAG AA ✓ Pass

Large Text (above 18pt) WCAG AAA ✓ Pass

Any Text WCAG AAA × Fail

If you want to check with other color combinations, try the [Color Contrast Checker](#).

Hex E14673 Background



This preview shows how black text looks on a background with the Hex color E14673.

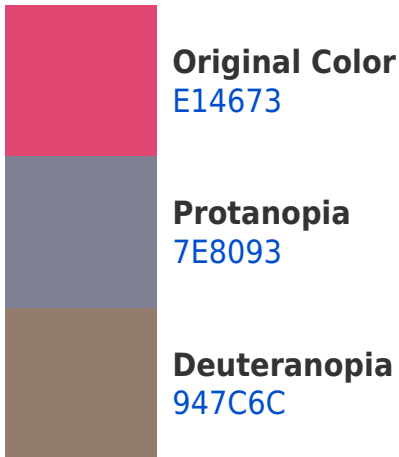



This preview shows how white text looks on a background with the Hex color E14673.

Color Blindness Simulation

Color vision deficiency is a very complex topic, and I could not describe the different causes any better than Wikipedia does, so if you want to learn more, you should check out their [article about color blindness](#).

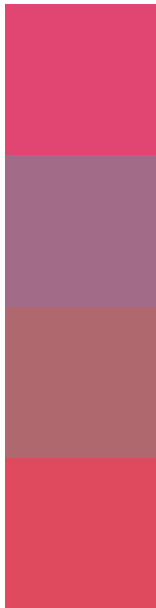
Dichromacy





Tritanopia
DF4D52

Trichromacy



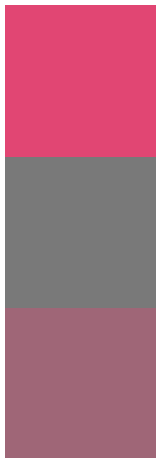
Original Color
E14673

Protanomaly
A26B87

Deuteranomaly
B0686F

Tritanomaly
E04A5E

Monochromacy



Original Color
E14673

Achromatopsia
797979

Achromatomaly
9F6677

CSS Examples

Text

The CSS property to change the color of the text to Hex E14673 is called "color". The color property can be set on classes, ids or directly on the HTML element.

This example shows how text in the color #E14673 looks like.

```
.text, #text, p{  
    color:#E14673  
}
```

If you want to add a text shadow in that color use the text-shadow property, you can generate a text shadow directly with our [CSS Text Shadow Generator](#).

Here you see how black text with a 4 pixel #E14673 colored shadow looks like.

```
.shadow{ text-shadow: 4px 4px 2px #E14673
}
```

Border

The CSS property to change the border of an element to Hex E14673 is called "border". The border property can be set on classes, ids or directly on the HTML element.

This example shows the color as border, it can be applied via the CSS property "border" or "border-color".

```
.border, #border, table{ border:4px solid
#E14673 }
```

If only the border color should be changed use the property `border-color`.

```
.border{ border-color:#E14673 }
```

If you want to add a box shadow in that color use:

Here you see how a box with a 4 pixel #E14673 colored shadow looks like.

```
.boxshadow{ -moz-box-shadow:4px 4px 4px  
4px #E14673; -webkit-box-shadow:4px 4px  
4px 4px #E14673; box-shadow:4px 4px 4px  
4px #E14673 }
```

Background

The CSS property to change the background color of an element to Hex E14673 is called "background". The background property can be set on classes, ids or directly on the HTML element.

```
.background, #background, body{  
background:#E14673 }
```

If only the background color should be changed can be used:

```
.background{ background-color:#E14673 }
```

This example shows the color as background, it is applied via the CSS property "background".

To optimize and compress your CSS code, you can use our [online CSS compressor and optimizer](#) based on csstidy. If you want to create a linear or radial gradient as background or border, check our [CSS Gradient Generator](#).

Hey! You found this booklet interesting? Support Converting Colors with the new Membership Option!

The pro membership hides all ads, plus gives you double the colors in the color bucket, and more awesome pro features!

[Learn more, Memberships starting at \\$2.50/m!](#)

**Follow me
on Twitter!**

@ConvertingColor