

Converting Colors

Hex(E14E6C)

Have a look what the booklet for
Hex(E14E6C) contains.

Hex(E14E6C)	3
<i>Conversions</i>	4
<i>Details</i>	6
<i>Harmonies</i>	11
<i>Previews</i>	23
<i>Color Blindness Simulation</i>	26
<i>CSS Examples</i>	29

Color

Hex(E14E6C)

Conversions

Conversions Part 1

Format	Color
Hex	E14E6C
RGB	225, 78, 108
RGB Percent	88%, 31%, 42%
CMY	0.1176, 0.6941, 0.5765
CMYK	0.00, 0.65, 0.52, 0.12
HSL	348°, 71%, 59%
HSV	348°, 65%, 88%
XYZ	36.4825, 22.5390, 16.6150
YIQ	125.3730, 77.9820, 40.4940

Conversions

Conversions Part 2

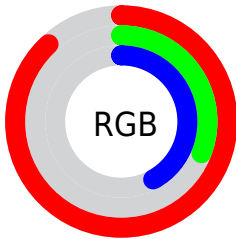
Format	Color
R_{YB}	225, 78, 108
Decimal	14765676
CIE _{Lab}	54.59, 59.09, 14.84
CIE _{LCh}	55, 60.922, 14.098
Yxy	22.5390, 0.4823, 0.2980
Android (android.graphics.Color)	4292955756 (0xFFE14E6C)
YUV	125.3730, -8.5649, 87.3729
Hunter-Lab	47.4753, 54.0870, 12.4829

Details

The Hex color **E14E6C** is a dark color, and the websafe version is hex **CC3366**. The color can be described as middle muted rose. A complement of this color would be **4EE1C3**, and the grayscale version is **7D7D7D**.

A 20% lighter version of the original color is **FF869F**, and **A4033D** is the 20% darker color. If you saturate the color by 10%, you get **E1385A**, and if you desaturate by 10%, it is **E1657E**.

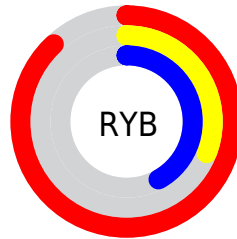
Distribution



Red (88%)

Green (31%)

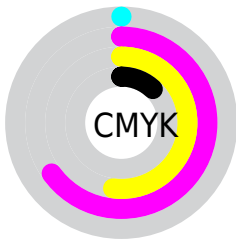
Blue (42%)



Red (88%)

Yellow (31%)

Blue (42%)

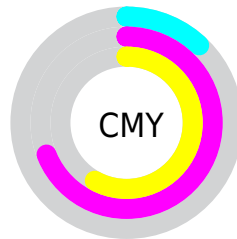


Cyan (0%)

Magenta (65%)

Yellow (52%)

Black (12%)



Cyan (12%)

Magenta (69%)

Yellow (58%)

Brightness & Saturation Gradients

These gradients show how the Hex color E14E6C changes by changing the brightness by 10 percent. The first figure shows a shift by +10% for each color and the second figure -10%.

Similar to the brightness gradients but the following saturation gradients show a change of the Hex color E14E6C by changing the saturation by 10% instead.

 E14E6C

 E14E6C

FFFFFF

 C23054

 FF869F

 A4033D

 FFA3BA

 860028

 FFbfd6

 680014

 FFdCF2

 4C0001

 FFFAFF

 2F0002

 000000

 E14E6C

 E14E6C

 E1385A

 E1657E

 E12148

 E17B90

 E10B36

 E192A2

 E1002E

 E1A8B4

 E1BFC6

 E1D5D7

 E1EBE9

 E1FFFB

 E1FFFF

Harmonies

Analogous

The Analogous color harmony consists of three colors that are next to each other on the color wheel.



D353A1



E14E6C



D45F3B

Triad

The Triadic color harmony groups three colors that are evenly spaced from another and form a triangle on the color wheel.



E14E6C



489330



0090E8

Complementary

The Complementary color scheme is a pair of colors which are on the opposite of each other on the color wheel.



E14E6C



4EE1C3

Split Complementary

Split-complementary colors differ from the complementary color scheme. The scheme consists of three colors, the original color and two neighbors of the complement color.



0099CB



E14E6C



009964

Square

The Square scheme is like the rectangle color scheme, but the four colors are evenly spaced on the color wheel.



E14E6C



858800



009B9B



4180E9

Rectangle

The Rectangle color scheme consists of four colors that form a rectangle on the color wheel.



E14E6C



C06F1D



009B9B



0094E1

Sweetspot

The Sweet Spot groups the original color and five complimentary colors.



E14E6C



FFCCD6



C14EE1



806167



000000



808080

Same Dimension

The Same Dimension uses a secret algorithm to generate beautiful new colors.



E14E6C



FF3861



E1784E



706567



B00024



30000A

Inverse Universe

The Inverse Universe completely reimagines the original color for something new.



E14E6C



FF3861



4EB7E1



706567



B00024



30000A

Previews

White Background



This preview shows how the Hex color E14E6C looks on a white background.

Color Contrast Check

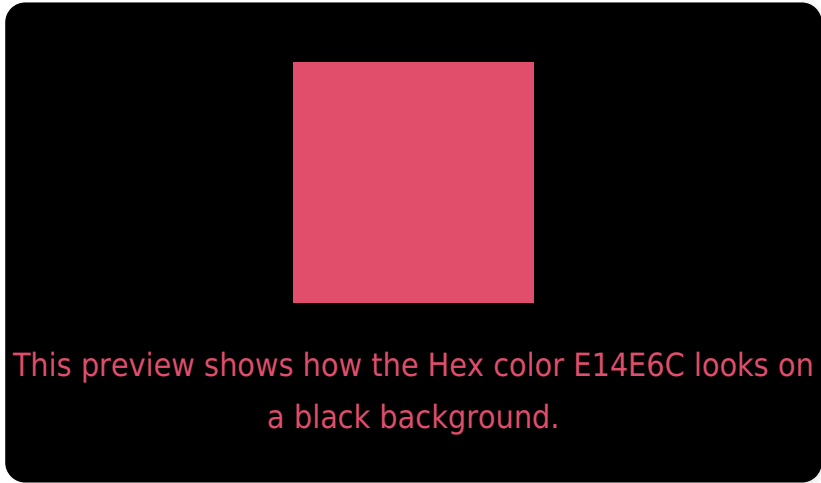
Large Text (above 18pt) WCAG AA ✓ Pass

Any Text WCAG AA × Fail

Large Text (above 18pt) WCAG AAA × Fail

Any Text WCAG AAA × Fail

Black Background



Color Contrast Check

Large Text (above 18pt) WCAG AA ✓ Pass

Any Text WCAG AA ✓ Pass

Large Text (above 18pt) WCAG AAA ✓ Pass

Any Text WCAG AAA × Fail

If you want to check with other color combinations, try the [Color Contrast Checker](#).

Hex E14E6C Background



This preview shows how black text looks on a background with the Hex color E14E6C.



This preview shows how white text looks on a background with the Hex color E14E6C.

Color Blindness Simulation

Color vision deficiency is a very complex topic, and I could not describe the different causes any better than Wikipedia does, so if you want to learn more, you should check out their [article about color blindness](#).

Dichromacy



Original Color
E14E6C

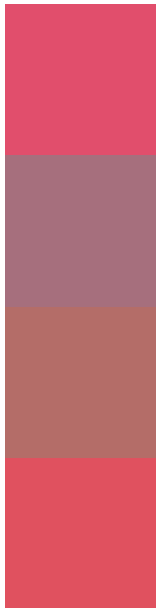
Protanopia
848287

Deuteranopia
9A7E65



Tritanopia
E05257

Trichromacy



Original Color
E14E6C

Protanomaly
A66F7D

Deuteranomaly
B46D68

Tritanomaly
E0515F

Monochromacy



Original Color
E14E6C

Achromatopsia
7D7D7D

Achromatomaly
A16C77

CSS Examples

Text

The CSS property to change the color of the text to Hex E14E6C is called "color". The color property can be set on classes, ids or directly on the HTML element.

This example shows how text in the color #E14E6C looks like.

```
.text, #text, p{  
  color:#E14E6C  
}
```

If you want to add a text shadow in that color use the text-shadow property, you can generate a text shadow directly with our [CSS Text Shadow Generator](#).

Here you see how black text with a 4 pixel #E14E6C colored shadow looks like.

```
.shadow{ text-shadow: 4px 4px 2px #E14E6C
}
```

Border

The CSS property to change the border of an element to Hex E14E6C is called "border". The border property can be set on classes, ids or directly on the HTML element.

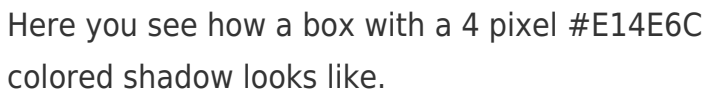
This example shows the color as border, it can be applied via the CSS property "border" or "border-color".

```
.border, #border, table{ border:4px solid
#E14E6C }
```

If only the border color should be changed use the property `border-color`.

```
.border{ border-color:#E14E6C }
```

If you want to add a box shadow in that color use:



Here you see how a box with a 4 pixel #E14E6C colored shadow looks like.

```
.boxshadow{ -moz-box-shadow:4px 4px 4px  
4px #E14E6C; -webkit-box-shadow:4px 4px  
4px 4px #E14E6C; box-shadow:4px 4px 4px  
4px #E14E6C }
```

Background

The CSS property to change the background color of an element to Hex E14E6C is called "background". The background property can be set on classes, ids or directly on the HTML element.

```
.background, #background, body{  
background:#E14E6C }
```

If only the background color should be changed can be used:

```
.background{ background-color:#E14E6C }
```

This example shows the color as background, it is applied via the CSS property "background".

To optimize and compress your CSS code, you can use our [online CSS compressor and optimizer](#) based on csstidy. If you want to create a linear or radial gradient as background or border, check our [CSS Gradient Generator](#).

Hey! You found this booklet interesting? Support Converting Colors with the new Membership Option!

The pro membership hides all ads, plus gives you double the colors in the color bucket, and more awesome pro features!

[Learn more, Memberships starting at \\$2.50/m!](#)

**Follow me
on Twitter!**

@ConvertingColor