

Converting Colors

Hex(E1607E)

Have a look what the booklet for
Hex(E1607E) contains.

Hex(E1607E)	3
<i>Conversions</i>	4
<i>Details</i>	6
<i>Harmonies</i>	11
<i>Previews</i>	23
<i>Color Blindness Simulation</i>	26
<i>CSS Examples</i>	29

Color

Hex(E1607E)

Conversions

Conversions Part 1

Format	Color
Hex	E1607E
RGB	225, 96, 126
RGB Percent	88%, 38%, 49%
CMY	0.1176, 0.6235, 0.5059
CMYK	0.00, 0.57, 0.44, 0.12
HSL	346°, 68%, 63%
HSV	346°, 57%, 88%
XYZ	39.0001, 25.8797, 22.6784
YIQ	137.9910, 67.2540, 36.6780

Conversions

Conversions Part 2

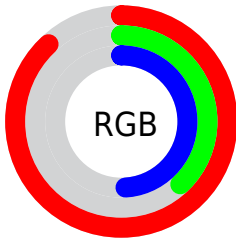
Format	Color
R _Y B	225, 96, 126
Decimal	14770302
CIE Lab	57.92, 52.91, 8.90
CIE LCh	58, 53.657, 9.547
Yxy	25.8797, 0.4454, 0.2956
Android (android.graphics.Color)	4292960382 (0xFFE1607E)
YUV	137.9910, -5.9116, 76.3069
Hunter-Lab	50.8720, 47.8176, 9.1794

Details

The Hex color **E1607E** is a light color, and the websafe version is hex **FF6699**. A complement of this color would be **60E1C3**, and the grayscale version is **8A8A8A**.

A 20% lighter version of the original color is **FF97B2**, and **A5274D** is the 20% darker color. If you saturate the color by 10%, you get **E1496D**, and if you desaturate by 10%, it is **E1768F**.

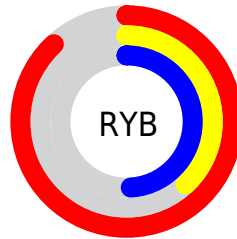
Distribution



Red (88%)

Green (38%)

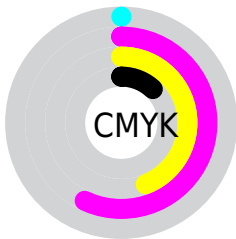
Blue (49%)



Red (88%)

Yellow (38%)

Blue (49%)

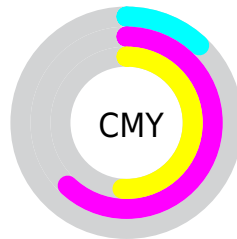


Cyan (0%)

Magenta (57%)

Yellow (44%)

Black (12%)



Cyan (12%)

Magenta (62%)

Yellow (51%)

Brightness & Saturation Gradients

These gradients show how the Hex color E1607E changes by changing the brightness by 10 percent. The first figure shows a shift by +10% for each color and the second figure -10%.

Similar to the brightness gradients but the following saturation gradients show a change of the Hex color E1607E by changing the saturation by 10% instead.

 E1607E

 E1607E

FFFFFF

 C34565

 FF97B2

 A5274D

 FFB3CE

 880037

 FFD0EA

 6B0022

 FFEDFF

 4F000B

 350002

 020000

 000000

 E1607E

 E1607E

 E1496D

 E1768F

 E1335B

 E18DA1

 E11C4A

 E1A3B2

 E10639

 E1BAC3

 E10034

 E1D1D4

 E1E7E6

 E1FEF7

 E1FFFF

Harmonies

Analogous

The Analogous color harmony consists of three colors that are next to each other on the color wheel.



CF66AD



E1607E



D96B52

Triad

The Triadic color harmony groups three colors that are evenly spaced from another and form a triangle on the color wheel.



E1607E



64993E



0099E3

Complementary

The Complementary color scheme is a pair of colors which are on the opposite of each other on the color wheel.



E1607E



60E1C3

Split Complementary

Split-complementary colors differ from the complementary color scheme. The scheme consists of three colors, the original color and two neighbors of the complement color.



00A0C6



E1607E



00A069

Square

The Square scheme is like the rectangle color scheme, but the four colors are evenly spaced on the color wheel.



E1607E



968E26



00A299



4B8BE8

Rectangle

The Rectangle color scheme consists of four colors that form a rectangle on the color wheel.



E1607E



C9773A



00A299



009CDB

Sweetspot

The Sweet Spot groups the original color and five complimentary colors.



E1607E



FFD4DE



C360E1



80666C



000000



808080

Same Dimension

The Same Dimension uses a secret algorithm to generate beautiful new colors.



E1607E



FF4F78



E18260



706568



B00029



30000B

Inverse Universe

The Inverse Universe completely reimagines the original color for something new.



E1607E



FF4F78



60BFE1



706568



B00029



30000B

Previews

White Background



This preview shows how the Hex color E1607E looks on a white background.

Color Contrast Check

Large Text (above 18pt) WCAG AA ✓ Pass

Any Text WCAG AA × Fail

Large Text (above 18pt) WCAG AAA × Fail

Any Text WCAG AAA × Fail

Black Background



Color Contrast Check

Large Text (above 18pt) WCAG AA ✓ Pass

Any Text WCAG AA ✓ Pass

Large Text (above 18pt) WCAG AAA ✓ Pass

Any Text WCAG AAA × Fail

If you want to check with other color combinations, try the [Color Contrast Checker](#).

Hex E1607E Background



This preview shows how black text looks on a background with the Hex color E1607E.

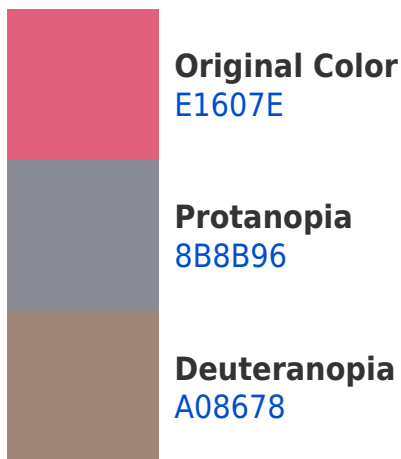


This preview shows how white text looks on a background with the Hex color E1607E.

Color Blindness Simulation

Color vision deficiency is a very complex topic, and I could not describe the different causes any better than Wikipedia does, so if you want to learn more, you should check out their [article about color blindness](#).

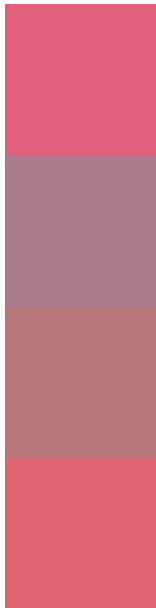
Dichromacy





Tritanopia
E0646A

Trichromacy



Original Color
E1607E

Protanomaly
AA7B8D

Deuteranomaly
B8787A

Tritanomaly
E06371

Monochromacy



Original Color
E1607E

Achromatopsia
8A8A8A

Achromatomaly
AA7B86

CSS Examples

Text

The CSS property to change the color of the text to Hex E1607E is called "color". The color property can be set on classes, ids or directly on the HTML element.

This example shows how text in the color #E1607E looks like.

```
.text, #text, p{  
    color:#E1607E  
}
```

If you want to add a text shadow in that color use the text-shadow property, you can generate a text shadow directly with our [CSS Text Shadow Generator](#).

Here you see how black text with a 4 pixel #E1607E colored shadow looks like.

```
.shadow{ text-shadow: 4px 4px 2px #E1607E
}
```

Border

The CSS property to change the border of an element to Hex E1607E is called "border". The border property can be set on classes, ids or directly on the HTML element.

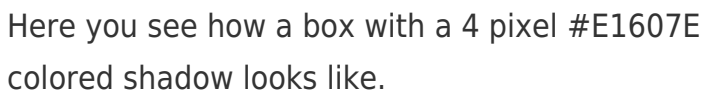
This example shows the color as border, it can be applied via the CSS property "border" or "border-color".

```
.border, #border, table{ border:4px solid
#E1607E }
```

If only the border color should be changed use the property `border-color`.

```
.border{ border-color:#E1607E }
```

If you want to add a box shadow in that color use:



Here you see how a box with a 4 pixel #E1607E colored shadow looks like.

```
.boxshadow{ -moz-box-shadow:4px 4px 4px  
4px #E1607E; -webkit-box-shadow:4px 4px  
4px 4px #E1607E; box-shadow:4px 4px 4px  
4px #E1607E }
```

Background

The CSS property to change the background color of an element to Hex E1607E is called "background". The background property can be set on classes, ids or directly on the HTML element.

```
.background, #background, body{  
background:#E1607E }
```

If only the background color should be changed can be used:

```
.background{ background-color:#E1607E }
```

This example shows the color as background, it is applied via the CSS property "background".

To optimize and compress your CSS code, you can use our [online CSS compressor and optimizer](#) based on csstidy. If you want to create a linear or radial gradient as background or border, check our [CSS Gradient Generator](#).

Hey! You found this booklet interesting? Support Converting Colors with the new Membership Option!

The pro membership hides all ads, plus gives you double the colors in the color bucket, and more awesome pro features!

[Learn more, Memberships starting at \\$2.50/m!](#)

**Follow me
on Twitter!**

@ConvertingColor