

Converting Colors

Hex(E16ADF)

Have a look what the booklet for
Hex(E16ADF) contains.

Hex(E16ADF)	3
<i>Conversions</i>	4
<i>Details</i>	6
<i>Harmonies</i>	11
<i>Previews</i>	23
<i>Color Blindness Simulation</i>	26
<i>CSS Examples</i>	29

Color

Hex(E16ADF)

Conversions

Conversions Part 1

Format	Color
Hex	E16ADF
RGB	225, 106, 223
RGB Percent	88%, 42%, 87%
CMY	0.1176, 0.5843, 0.1255
CMYK	0.00, 0.53, 0.01, 0.12
HSL	301°, 66%, 65%
HSV	301°, 53%, 88%
XYZ	49.5247, 31.6433, 73.3096
YIQ	154.9190, 33.3670, 61.6150

Conversions

Conversions Part 2

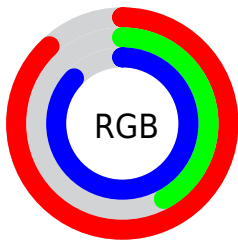
Format	Color
R _{YB}	225, 106, 223
Decimal	14772959
CIE Lab	63.05, 61.62, -39.00
CIE LCh	63, 72.931, 327.669
Yxy	31.6433, 0.3206, 0.2048
Android (android.graphics.Color)	4292963039 (0xFFE16ADF)
YUV	154.9190, 33.5639, 61.4610
Hunter-Lab	56.2524, 58.7098, -37.8916

Details

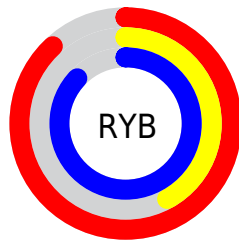
The Hex color **E16ADF** is a light color, and the websafe version is hex **CC66CC**. A complement of this color would be **6AE16C**, and the grayscale version is **9B9B9B**.

A 20% lighter version of the original color is **FFA2FF**, and **A731A7** is the 20% darker color. If you saturate the color by 10%, you get **E154DF**, and if you desaturate by 10%, it is **E181DF**.

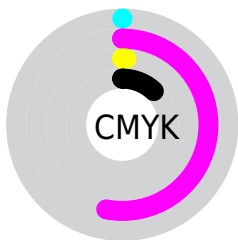
Distribution



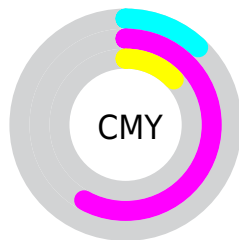
- Red (88%)
- Green (42%)
- Blue (87%)



- Red (88%)
- Yellow (42%)
- Blue (87%)



- Cyan (0%)
- Magenta (53%)
- Yellow (1%)
- Black (12%)



- Cyan (12%)
- Magenta (58%)
- Yellow (13%)

Brightness & Saturation Gradients

These gradients show how the Hex color E16ADF changes by changing the brightness by 10 percent. The first figure shows a shift by +10% for each color and the second figure -10%.

Similar to the brightness gradients but the following saturation gradients show a change of the Hex color E16ADF by changing the saturation by 10% instead.

 E16ADF

 E16ADF

FFFFFF

 C44EC3

 FFA2FF

 A731A7

 FFBEFF

 8B088D

 FFDBFF

 6F0073

 FFF9FF

 54005A

 3A0042

 1F002B

 000114

 000000

 E16ADF

 E16ADF

 E154DF

 E181DF

 E13DDE

 E197E0

 E127DE

 E1ADE0

 E110DD

 E1C4E1

 E100DD

 E1DBE1

 E1F1E1

 E1FFE2

Harmonies

Analogous

The Analogous color harmony consists of three colors that are next to each other on the color wheel.



8B89FF



E16ADF



FF54A0

Triad

The Triadic color harmony groups three colors that are evenly spaced from another and form a triangle on the color wheel.



E16ADF



BB9400



00B6D3

Complementary

The Complementary color scheme is a pair of colors which are on the opposite of each other on the color wheel.



E16ADF



6AE16C

Split Complementary

Split-complementary colors differ from the complementary color scheme. The scheme consists of three colors, the original color and two neighbors of the complement color.



00B691



E16ADF



7CA602

Square

The Square scheme is like the rectangle color scheme, but the four colors are evenly spaced on the color wheel.



E16ADF



EB7925



00B14E



00B0FF

Rectangle

The Rectangle color scheme consists of four colors that form a rectangle on the color wheel.



E16ADF



FF5675



00B14E



00B6BE

Sweetspot

The Sweet Spot groups the original color and five complimentary colors.



E16ADF



FFD6FE



6C6AE1



80677F



000000



808080

Same Dimension

The Same Dimension uses a secret algorithm to generate beautiful new colors.



E16ADF



FF5EFC



E16AA4



706570



B000AD



300030

Inverse Universe

The Inverse Universe completely reimagines the original color for something new.



E16ADF



FF5EFC



6AE1A7



706570



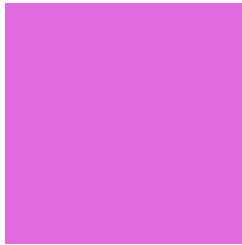
B000AD



300030

Previews

White Background



This preview shows how the Hex color E16ADF looks on a white background.

Color Contrast Check

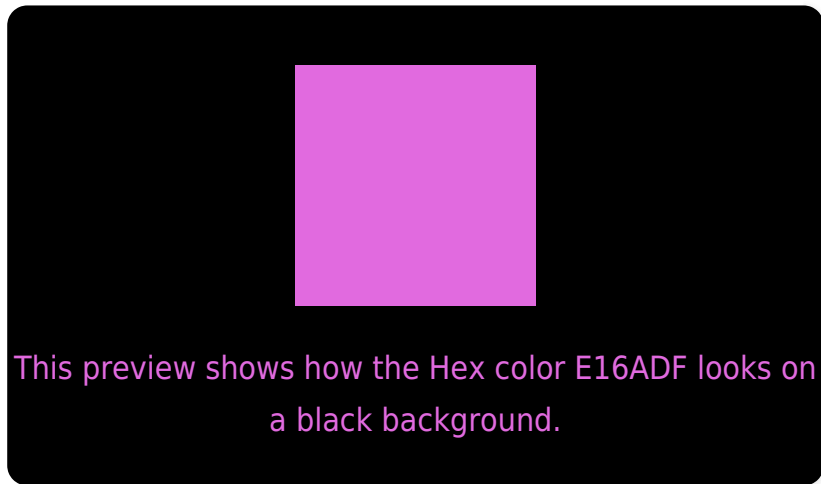
Large Text (above 18pt) WCAG AA × Fail

Any Text WCAG AA × Fail

Large Text (above 18pt) WCAG AAA × Fail

Any Text WCAG AAA × Fail

Black Background



Color Contrast Check

Large Text (above 18pt) WCAG AA ✓ Pass

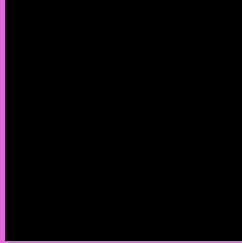
Any Text WCAG AA ✓ Pass

Large Text (above 18pt) WCAG AAA ✓ Pass

Any Text WCAG AAA ✓ Pass

If you want to check with other color combinations, try the [Color Contrast Checker](#).

Hex E16ADF Background



This preview shows how black text looks on a background with the Hex color E16ADF.



This preview shows how white text looks on a background with the Hex color E16ADF.

Color Blindness Simulation

Color vision deficiency is a very complex topic, and I could not describe the different causes any better than Wikipedia does, so if you want to learn more, you should check out their [article about color blindness](#).

Dichromacy





Tritanopia
D78089

Trichromacy



Original Color
E16ADF



Protanomaly
9786F3



Deuteranomaly
A587DA



Tritanomaly
DB78A8

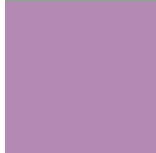
Monochromacy



Original Color
E16ADF



Achromatopsia
9B9B9B



Achromatomaly
B489B4

CSS Examples

Text

The CSS property to change the color of the text to Hex E16ADF is called "color". The color property can be set on classes, ids or directly on the HTML element.

This example shows how text in the color #E16ADF looks like.

```
.text, #text, p{  
    color:#E16ADF  
}
```

If you want to add a text shadow in that color use the text-shadow property, you can generate a text shadow directly with our [CSS Text Shadow Generator](#).

Here you see how black text with a 4 pixel #E16ADF colored shadow looks like.

```
.shadow{ text-shadow: 4px 4px 2px #E16ADF
}
```

Border

The CSS property to change the border of an element to Hex E16ADF is called "border". The border property can be set on classes, ids or directly on the HTML element.

This example shows the color as border, it can be applied via the CSS property "border" or "border-color".

```
.border, #border, table{ border:4px solid
#E16ADF }
```

If only the border color should be changed use the property `border-color`.

```
.border{ border-color:#E16ADF }
```

If you want to add a box shadow in that color use:

Here you see how a box with a 4 pixel #E16ADF colored shadow looks like.

```
.boxshadow{ -moz-box-shadow:4px 4px 4px  
4px #E16ADF; -webkit-box-shadow:4px 4px  
4px 4px #E16ADF; box-shadow:4px 4px 4px  
4px #E16ADF }
```

Background

The CSS property to change the background color of an element to Hex E16ADF is called "background". The background property can be set on classes, ids or directly on the HTML element.

```
.background, #background, body{  
background:#E16ADF }
```

If only the background color should be changed can be used:

```
.background{ background-color:#E16ADF }
```

This example shows the color as background, it is applied via the CSS property "background".

To optimize and compress your CSS code, you can use our [online CSS compressor and optimizer](#) based on csstidy. If you want to create a linear or radial gradient as background or border, check our [CSS Gradient Generator](#).

Hey! You found this booklet interesting? Support Converting Colors with the new Membership Option!

The pro membership hides all ads, plus gives you double the colors in the color bucket, and more awesome pro features!

[Learn more, Memberships starting at \\$2.50/m!](#)

**Follow me
on Twitter!**

@ConvertingColor