

Converting Colors

Hex(E16DE2)

Have a look what the booklet for
Hex(E16DE2) contains.

Hex(E16DE2)	3
<i>Conversions</i>	4
<i>Details</i>	6
<i>Harmonies</i>	11
<i>Previews</i>	23
<i>Color Blindness Simulation</i>	26
<i>CSS Examples</i>	29

Color

Hex(E16DE2)

Conversions

Conversions Part 1

Format	Color
Hex	E16DE2
RGB	225, 109, 226
RGB Percent	88%, 43%, 89%
CMY	0.1176, 0.5725, 0.1137
CMYK	0.00, 0.52, 0.00, 0.11
HSL	299°, 67%, 66%
HSV	299°, 52%, 89%
XYZ	50.2474, 32.4358, 75.5639
YIQ	157.0220, 31.5790, 60.9790

Conversions

Conversions Part 2

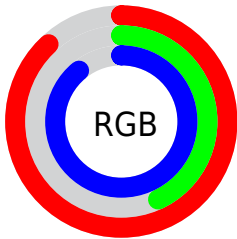
Format	Color
R _Y B	225, 109, 226
Decimal	14773730
CIE Lab	63.70, 60.75, -39.65
CIE LCh	64, 72.548, 326.866
Yxy	32.4358, 0.3175, 0.2050
Android (android.graphics.Color)	4292963810 (0xFFE16DE2)
YUV	157.0220, 34.0062, 59.6167
Hunter-Lab	56.9525, 57.8184, -38.7986

Details

The Hex color **E16DE2** is a light color, and the websafe version is hex **CC66CC**. A complement of this color would be **6EE26D**, and the grayscale version is **9D9D9D**.

A 20% lighter version of the original color is **FFA5FF**, and **A735AA** is the 20% darker color. If you saturate the color by 10%, you get **E156E2**, and if you desaturate by 10%, it is **E184E2**.

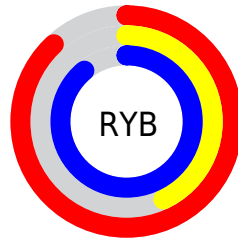
Distribution



Red (88%)

Green (43%)

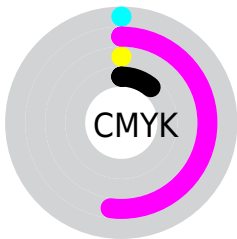
Blue (89%)



Red (88%)

Yellow (43%)

Blue (89%)

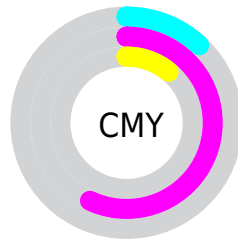


Cyan (0%)

Magenta (52%)

Yellow (0%)

Black (11%)



Cyan (12%)

Magenta (57%)

Yellow (11%)

Brightness & Saturation Gradients

These gradients show how the Hex color E16DE2 changes by changing the brightness by 10 percent. The first figure shows a shift by +10% for each color and the second figure -10%.

Similar to the brightness gradients but the following saturation gradients show a change of the Hex color E16DE2 by changing the saturation by 10% instead.

 E16DE2

 E16DE2

FFFFFF

 C451C6

 FFA5FF

 A735AA

 FFC1FF

 8B118F

 FFDEFF

 6F0075

 FFFCFF

 54005C

 3A0044

 20002D

 000117

 000000

 E16DE2

 E16DE2

 E156E2

 E184E2

 E140E2

 E19AE2

 E029E2

 E2B1E2

 E013E2

 E2C7E2

 E000E2

 E2DEE2

 E2F5E2

 E2FFE2

 E3FFE2

Harmonies

Analogous

The Analogous color harmony consists of three colors that are next to each other on the color wheel.



8A8CFF



E16DE2



FF56A4

Triad

The Triadic color harmony groups three colors that are evenly spaced from another and form a triangle on the color wheel.



E16DE2



BE9500



00B8D3

Complementary

The Complementary color scheme is a pair of colors which are on the opposite of each other on the color wheel.



E16DE2



6EE26D

Split Complementary

Split-complementary colors differ from the complementary color scheme. The scheme consists of three colors, the original color and two neighbors of the complement color.



00B791



E16DE2



80A806

Square

The Square scheme is like the rectangle color scheme, but the four colors are evenly spaced on the color wheel.



E16DE2



EE7B29



00B24F



00B2FF

Rectangle

The Rectangle color scheme consists of four colors that form a rectangle on the color wheel.



E16DE2



FF5879



00B24F



00B8BE

Sweetspot

The Sweet Spot groups the original color and five complimentary colors.



E16DE2



FFD6FF



6D6FE2



7F6780



000000



808080

Same Dimension

The Same Dimension uses a secret algorithm to generate beautiful new colors.



E16DE2



FE61FF



E26DA9



706570



AE00B0



300030

Inverse Universe

The Inverse Universe completely reimagines the original color for something new.



E26D6E



FF6162



6DE2A6



706565



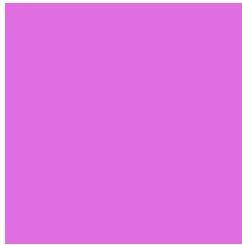
B00002



300000

Previews

White Background



This preview shows how the Hex color E16DE2 looks on a white background.

Color Contrast Check

Large Text (above 18pt) WCAG AA × Fail

Any Text WCAG AA × Fail

Large Text (above 18pt) WCAG AAA × Fail

Any Text WCAG AAA × Fail

Black Background



Color Contrast Check

Large Text (above 18pt) WCAG AA ✓ Pass

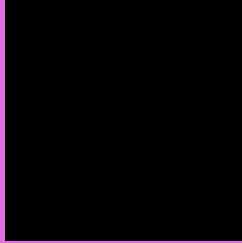
Any Text WCAG AA ✓ Pass

Large Text (above 18pt) WCAG AAA ✓ Pass

Any Text WCAG AAA ✓ Pass

If you want to check with other color combinations, try the [Color Contrast Checker](#).

Hex E16DE2 Background



This preview shows how black text looks on a background with the Hex color E16DE2.

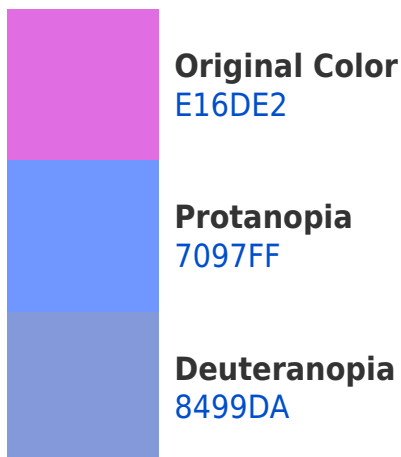



This preview shows how white text looks on a background with the Hex color E16DE2.

Color Blindness Simulation

Color vision deficiency is a very complex topic, and I could not describe the different causes any better than Wikipedia does, so if you want to learn more, you should check out their [article about color blindness](#).

Dichromacy





Tritanopia
D6828C

Trichromacy



Original Color
E16DE2



Protanomaly
9988F4



Deuteranomaly
A689DD



Tritanomaly
DA7AAB

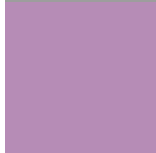
Monochromacy



Original Color
E16DE2



Achromatopsia
9D9D9D



Achromatomaly
B68CB6

CSS Examples

Text

The CSS property to change the color of the text to Hex E16DE2 is called "color". The color property can be set on classes, ids or directly on the HTML element.

This example shows how text in the color #E16DE2 looks like.

```
.text, #text, p{  
    color:#E16DE2  
}
```

If you want to add a text shadow in that color use the text-shadow property, you can generate a text shadow directly with our [CSS Text Shadow Generator](#).

Here you see how black text with a 4 pixel #E16DE2 colored shadow looks like.

```
.shadow{ text-shadow: 4px 4px 2px #E16DE2
}
```

Border

The CSS property to change the border of an element to Hex E16DE2 is called "border". The border property can be set on classes, ids or directly on the HTML element.

This example shows the color as border, it can be applied via the CSS property "border" or "border-color".

```
.border, #border, table{ border:4px solid
#E16DE2 }
```

If only the border color should be changed use the property `border-color`.

```
.border{ border-color:#E16DE2 }
```

If you want to add a box shadow in that color use:

Here you see how a box with a 4 pixel #E16DE2 colored shadow looks like.

```
.boxshadow{ -moz-box-shadow:4px 4px 4px  
4px #E16DE2; -webkit-box-shadow:4px 4px  
4px 4px #E16DE2; box-shadow:4px 4px 4px  
4px #E16DE2 }
```

Background

The CSS property to change the background color of an element to Hex E16DE2 is called "background". The background property can be set on classes, ids or directly on the HTML element.

```
.background, #background, body{  
background:#E16DE2 }
```

If only the background color should be changed can be used:

```
.background{ background-color:#E16DE2 }
```

This example shows the color as background, it is applied via the CSS property "background".

To optimize and compress your CSS code, you can use our [online CSS compressor and optimizer](#) based on csstidy. If you want to create a linear or radial gradient as background or border, check our [CSS Gradient Generator](#).

Hey! You found this booklet interesting? Support Converting Colors with the new Membership Option!

The pro membership hides all ads, plus gives you double the colors in the color bucket, and more awesome pro features!

[Learn more, Memberships starting at \\$2.50/m!](#)

**Follow me
on Twitter!**

@ConvertingColor