

Converting Colors

Hex(E16E7D)

Have a look what the booklet for
Hex(E16E7D) contains.

Hex(E16E7D)	3
<i>Conversions</i>	4
<i>Details</i>	6
<i>Harmonies</i>	11
<i>Previews</i>	23
<i>Color Blindness Simulation</i>	26
<i>CSS Examples</i>	29

Color

Hex(E16E7D)

Conversions

Conversions Part 1

Format	Color
Hex	E16E7D
RGB	225, 110, 125
RGB Percent	88%, 43%, 49%
CMY	0.1176, 0.5686, 0.5098
CMYK	0.00, 0.51, 0.44, 0.12
HSL	352°, 66%, 66%
HSV	352°, 51%, 88%
XYZ	40.3289, 28.6401, 22.8046
YIQ	146.0950, 63.7250, 29.0450

Conversions

Conversions Part 2

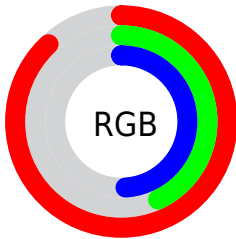
Format	Color
R _Y B	225, 110, 125
Decimal	14773885
CIE Lab	60.46, 46.14, 13.06
CIE LCh	60, 47.951, 15.804
Yxy	28.6401, 0.4394, 0.3121
Android (android.graphics.Color)	4292963965 (0xFFE16E7D)
YUV	146.0950, -10.3998, 69.1997
Hunter-Lab	53.5164, 40.8604, 12.1967

Details

The Hex color **E16E7D** is a light color, and the websafe version is hex **CC6666**. A complement of this color would be **6EE1D2**, and the grayscale version is **929292**.

A 20% lighter version of the original color is **FFA4B1**, and **A6394C** is the 20% darker color. If you saturate the color by 10%, you get **E15869**, and if you desaturate by 10%, it is **E18591**.

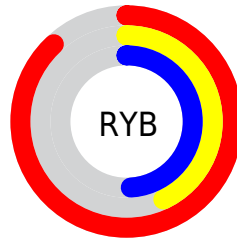
Distribution



Red (88%)

Green (43%)

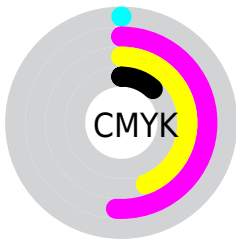
Blue (49%)



Red (88%)

Yellow (43%)

Blue (49%)

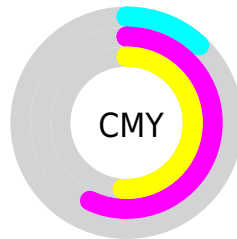


Cyan (0%)

Magenta (51%)

Yellow (44%)

Black (12%)



Cyan (12%)

Magenta (57%)

Yellow (51%)

Brightness & Saturation Gradients

These gradients show how the Hex color E16E7D changes by changing the brightness by 10 percent. The first figure shows a shift by +10% for each color and the second figure -10%.

Similar to the brightness gradients but the following saturation gradients show a change of the Hex color E16E7D by changing the saturation by 10% instead.

 E16E7D

 E16E7D

FFFFFF

 C35464

 FFA4B1

 A6394C

 FFC0CD

 891D36

 FFDDE9

 6C0021

 FFFAFF

 51000A

 370002

 0D0000

 000000

 E16E7D

 E16E7D

 E15869


 E18591

 E14156

 E19BA4

 E12B42

 E1B2B8

 E1142F

 E1C8CB

 E1001D

 E1DFDF

 E1F5F2

 E1FFFF

Harmonies

Analogous

The Analogous color harmony consists of three colors that are next to each other on the color wheel.



D670A8



E16E7D



D67957

Triad

The Triadic color harmony groups three colors that are evenly spaced from another and form a triangle on the color wheel.



E16E7D



65A054



009CE3

Complementary

The Complementary color scheme is a pair of colors which are on the opposite of each other on the color wheel.



E16E7D



6EE1D2

Split Complementary

Split-complementary colors differ from the complementary color scheme. The scheme consists of three colors, the original color and two neighbors of the complement color.



00A4CD



E16E7D



04A67C

Square

The Square scheme is like the rectangle color scheme, but the four colors are evenly spaced on the color wheel.



E16E7D



95963C



00A7A7



728FE3

Rectangle

The Rectangle color scheme consists of four colors that form a rectangle on the color wheel.



E16E7D



C68344



00A7A7



009FDE

Sweetspot

The Sweet Spot groups the original color and five complimentary colors.



E16E7D



FFD9DE



D26EE1



80696C



000000



808080

Same Dimension

The Same Dimension uses a secret algorithm to generate beautiful new colors.



E16E7D



FF6378



E1986E



706566



B00017



300006

Inverse Universe

The Inverse Universe completely reimagines the original color for something new.



E16E7D



FF6378



6EB7E1



706566



B00017



300006

Previews

White Background



This preview shows how the Hex color E16E7D looks on a white background.

Color Contrast Check

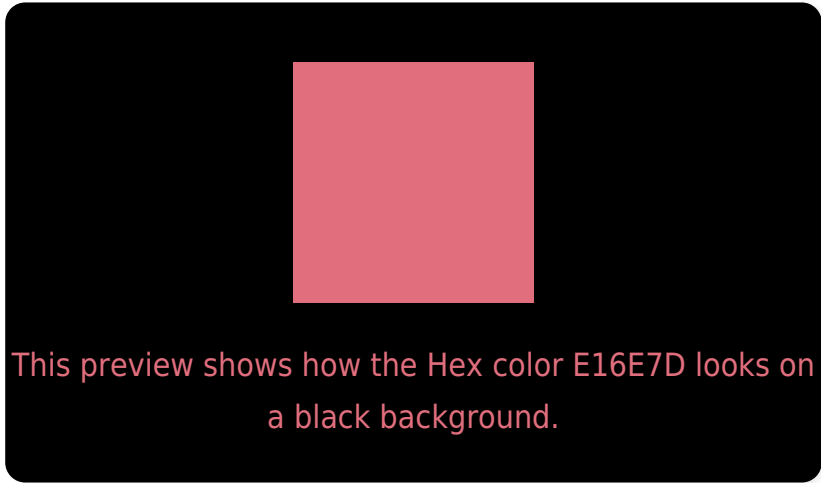
Large Text (above 18pt) WCAG AA ✓ Pass

Any Text WCAG AA × Fail

Large Text (above 18pt) WCAG AAA × Fail

Any Text WCAG AAA × Fail

Black Background



Color Contrast Check

Large Text (above 18pt) WCAG AA ✓ Pass

Any Text WCAG AA ✓ Pass

Large Text (above 18pt) WCAG AAA ✓ Pass

Any Text WCAG AAA × Fail

If you want to check with other color combinations, try the [Color Contrast Checker](#).

Hex E16E7D Background



This preview shows how black text looks on a background with the Hex color E16E7D.



This preview shows how white text looks on a background with the Hex color E16E7D.

Color Blindness Simulation

Color vision deficiency is a very complex topic, and I could not describe the different causes any better than Wikipedia does, so if you want to learn more, you should check out their [article about color blindness](#).

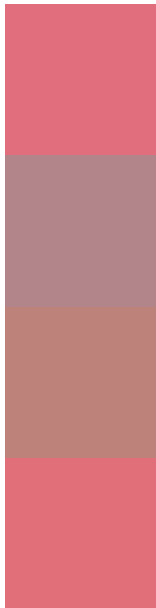
Dichromacy





Tritanopia
E16F77

Trichromacy



Original Color
E16E7D

Protanomaly
B18589

Deuteranomaly
BD827A

Tritanomaly
E16F79

Monochromacy



Original Color
E16E7D

Achromatopsia
929292

Achromatomaly
AF858A

CSS Examples

Text

The CSS property to change the color of the text to Hex E16E7D is called "color". The color property can be set on classes, ids or directly on the HTML element.

This example shows how text in the color #E16E7D looks like.

```
.text, #text, p{  
    color:#E16E7D  
}
```

If you want to add a text shadow in that color use the text-shadow property, you can generate a text shadow directly with our [CSS Text Shadow Generator](#).

Here you see how black text with a 4 pixel #E16E7D colored shadow looks like.

```
.shadow{ text-shadow: 4px 4px 2px #E16E7D
}
```

Border

The CSS property to change the border of an element to Hex E16E7D is called "border". The border property can be set on classes, ids or directly on the HTML element.

This example shows the color as border, it can be applied via the CSS property "border" or "border-color".

```
.border, #border, table{ border:4px solid
#E16E7D }
```

If only the border color should be changed use the property `border-color`.

```
.border{ border-color:#E16E7D }
```

If you want to add a box shadow in that color use:

Here you see how a box with a 4 pixel #E16E7D colored shadow looks like.

```
.boxshadow{ -moz-box-shadow:4px 4px 4px  
4px #E16E7D; -webkit-box-shadow:4px 4px  
4px 4px #E16E7D; box-shadow:4px 4px 4px  
4px #E16E7D }
```

Background

The CSS property to change the background color of an element to Hex E16E7D is called "background". The background property can be set on classes, ids or directly on the HTML element.

```
.background, #background, body{  
background:#E16E7D }
```

If only the background color should be changed can be used:

```
.background{ background-color:#E16E7D }
```

This example shows the color as background, it is applied via the CSS property "background".

To optimize and compress your CSS code, you can use our [online CSS compressor and optimizer](#) based on csstidy. If you want to create a linear or radial gradient as background or border, check our [CSS Gradient Generator](#).

Hey! You found this booklet interesting? Support Converting Colors with the new Membership Option!

The pro membership hides all ads, plus gives you double the colors in the color bucket, and more awesome pro features!

[Learn more, Memberships starting at \\$2.50/m!](#)

**Follow me
on Twitter!**

@ConvertingColor