

Converting Colors

Hex(E16ECC)

Have a look what the booklet for
Hex(E16ECC) contains.

Hex(E16ECC)	3
<i>Conversions</i>	4
<i>Details</i>	6
<i>Harmonies</i>	11
<i>Previews</i>	23
<i>Color Blindness Simulation</i>	26
<i>CSS Examples</i>	29

Color

Hex(E16ECC)

Conversions

Conversions Part 1

Format	Color
Hex	E16ECC
RGB	225, 110, 204
RGB Percent	88%, 43%, 80%
CMY	0.1176, 0.5686, 0.2000
CMYK	0.00, 0.51, 0.09, 0.12
HSL	311°, 66%, 66%
HSV	311°, 51%, 88%
XYZ	47.5264, 31.5190, 60.7056
YIQ	155.1010, 38.3660, 53.6140

Conversions

Conversions Part 2

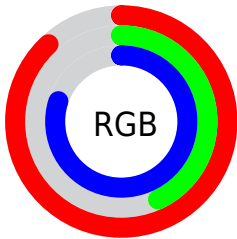
Format	Color
R _Y B	225, 110, 204
Decimal	14773964
CIE Lab	62.94, 56.59, -28.50
CIE LCh	63, 63.357, 333.268
Yxy	31.5190, 0.3401, 0.2255
Android (android.graphics.Color)	4292964044 (0xFFE16ECC)
YUV	155.1010, 24.1072, 61.3014
Hunter-Lab	56.1418, 52.8594, -24.8104

Details

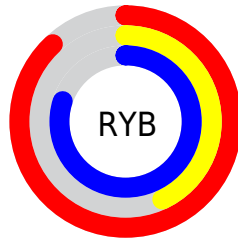
The Hex color **E16ECC** is a light color, and the websafe version is hex **CC66CC**. A complement of this color would be **6EE183**, and the grayscale version is **9B9B9B**.

A 20% lighter version of the original color is **FFA5FF**, and **A73796** is the 20% darker color. If you saturate the color by 10%, you get **E158C8**, and if you desaturate by 10%, it is **E185D0**.

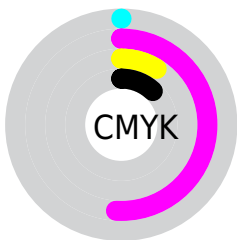
Distribution



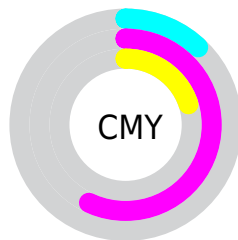
- Red (88%)
- Green (43%)
- Blue (80%)



- Red (88%)
- Yellow (43%)
- Blue (80%)



- Cyan (0%)
- Magenta (51%)
- Yellow (9%)
- Black (12%)




- Cyan (12%)
- Magenta (57%)
- Yellow (20%)

Brightness & Saturation Gradients

These gradients show how the Hex color E16ECC changes by changing the brightness by 10 percent. The first figure shows a shift by +10% for each color and the second figure -10%.

Similar to the brightness gradients but the following saturation gradients show a change of the Hex color E16ECC by changing the saturation by 10% instead.

 E16ECC

 E16ECC

FFFFFF

 C453B0

 FFA5FF

 A73796

 FFC2FF

 8B167B

 FFDFFF

 700062

 FFFCFF

 55004A


 3C0033

 21001D

 000000

 E16ECC

 E16ECC

 E158C8

 E185D0

 E141C4

 E19BD4

 E12BC0

 E1B2D8

 E114BC

 E1C8DC

 E100B8

 E1DFE1

 E1F5E5

 E1FFE9

 E1FFED

 E1FFF1

Harmonies

Analogous

The Analogous color harmony consists of three colors that are next to each other on the color wheel.



A187F7



E16ECC



FC6194

Triad

The Triadic color harmony groups three colors that are evenly spaced from another and form a triangle on the color wheel.



E16ECC



AF9815



00B2D5

Complementary

The Complementary color scheme is a pair of colors which are on the opposite of each other on the color wheel.



E16ECC



6EE183

Split Complementary

Split-complementary colors differ from the complementary color scheme. The scheme consists of three colors, the original color and two neighbors of the complement color.



00B39D



E16ECC



75A731

Square

The Square scheme is like the rectangle color scheme, but the four colors are evenly spaced on the color wheel.



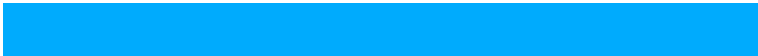
E16ECC



DC8230



00AF63



00ABFD

Rectangle

The Rectangle color scheme consists of four colors that form a rectangle on the color wheel.



E16ECC



FD666F



00AF63



00B3C3

Sweetspot

The Sweet Spot groups the original color and five complimentary colors.



E16ECC



FFD9F8



816EE1



80697B



000000



808080

Same Dimension

The Same Dimension uses a secret algorithm to generate beautiful new colors.



E16ECC



FF63E3



E16E94



70656E



B00090



300028

Inverse Universe

The Inverse Universe completely reimagines the original color for something new.



E16ECC



FF63E3



6EE1BB



70656E



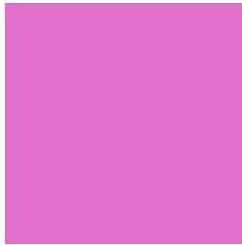
B00090



300028

Previews

White Background



This preview shows how the Hex color E16ECC looks on a white background.

Color Contrast Check

Large Text (above 18pt) WCAG AA × Fail

Any Text WCAG AA × Fail

Large Text (above 18pt) WCAG AAA × Fail

Any Text WCAG AAA × Fail

Black Background



Color Contrast Check

Large Text (above 18pt) WCAG AA ✓ Pass

Any Text WCAG AA ✓ Pass

Large Text (above 18pt) WCAG AAA ✓ Pass

Any Text WCAG AAA ✓ Pass

If you want to check with other color combinations, try the [Color Contrast Checker](#).

Hex E16ECC Background



This preview shows how black text looks on a background with the Hex color E16ECC.



This preview shows how white text looks on a background with the Hex color E16ECC.

Color Blindness Simulation

Color vision deficiency is a very complex topic, and I could not describe the different causes any better than Wikipedia does, so if you want to learn more, you should check out their [article about color blindness](#).

Dichromacy





Tritanopia
D97E87

Trichromacy



Original Color
E16ECC



Protanomaly
9F87E0



Deuteranomaly
AD87C8

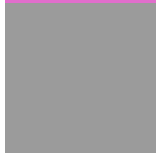


Tritanomaly
DC78A0

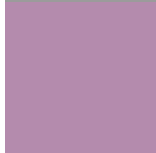
Monochromacy



Original Color
E16ECC



Achromatopsia
9B9B9B



Achromatomaly
B48BAD

CSS Examples

Text

The CSS property to change the color of the text to Hex E16ECC is called "color". The color property can be set on classes, ids or directly on the HTML element.

This example shows how text in the color #E16ECC looks like.

```
.text, #text, p{  
    color:#E16ECC  
}
```

If you want to add a text shadow in that color use the text-shadow property, you can generate a text shadow directly with our [CSS Text Shadow Generator](#).

Here you see how black text with a 4 pixel #E16ECC colored shadow looks like.

```
.shadow{ text-shadow: 4px 4px 2px #E16ECC
}
```

Border

The CSS property to change the border of an element to Hex E16ECC is called "border". The border property can be set on classes, ids or directly on the HTML element.

This example shows the color as border, it can be applied via the CSS property "border" or "border-color".

```
.border, #border, table{ border:4px solid
#E16ECC }
```

If only the border color should be changed use the property `border-color`.

```
.border{ border-color:#E16ECC }
```

If you want to add a box shadow in that color use:

Here you see how a box with a 4 pixel #E16ECC colored shadow looks like.

```
.boxshadow{ -moz-box-shadow:4px 4px 4px  
4px #E16ECC; -webkit-box-shadow:4px 4px  
4px 4px #E16ECC; box-shadow:4px 4px 4px  
4px #E16ECC }
```

Background

The CSS property to change the background color of an element to Hex E16ECC is called "background". The background property can be set on classes, ids or directly on the HTML element.

```
.background, #background, body{  
background:#E16ECC }
```

If only the background color should be changed can be used:

```
.background{ background-color:#E16ECC }
```

This example shows the color as background, it is applied via the CSS property "background".

To optimize and compress your CSS code, you can use our [online CSS compressor and optimizer](#) based on csstidy. If you want to create a linear or radial gradient as background or border, check our [CSS Gradient Generator](#).

Hey! You found this booklet interesting? Support Converting Colors with the new Membership Option!

The pro membership hides all ads, plus gives you double the colors in the color bucket, and more awesome pro features!

[Learn more, Memberships starting at \\$2.50/m!](#)

**Follow me
on Twitter!**

@ConvertingColor