

Converting Colors

Hex(E17184)

Have a look what the booklet for
Hex(E17184) contains.

Hex(E17184)	3
<i>Conversions</i>	4
<i>Details</i>	6
<i>Harmonies</i>	11
<i>Previews</i>	23
<i>Color Blindness Simulation</i>	26
<i>CSS Examples</i>	29

Color

Hex(E17184)

Conversions

Conversions Part 1

Format	Color
Hex	E17184
RGB	225, 113, 132
RGB Percent	88%, 44%, 52%
CMY	0.1176, 0.5569, 0.4824
CMYK	0.00, 0.50, 0.41, 0.12
HSL	350°, 65%, 66%
HSV	350°, 50%, 88%
XYZ	41.1213, 29.4837, 25.3534
YIQ	148.6540, 60.6530, 29.6530

Conversions

Conversions Part 2

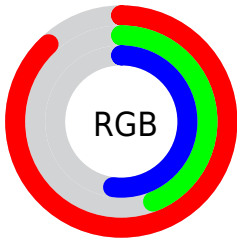
Format	Color
R_{YB}	225, 113, 132
Decimal	14774660
CIE _{Lab}	61.21, 45.38, 10.07
CIE _{LCh}	61, 46.482, 12.514
Yxy	29.4837, 0.4285, 0.3073
Android (android.graphics.Color)	4292964740 (0xFFE17184)
YUV	148.6540, -8.2104, 66.9554
Hunter-Lab	54.2989, 40.1573, 10.3254

Details

The Hex color **E17184** is a light color, and the websafe version is hex **CC6666**. A complement of this color would be **71E1CE**, and the grayscale version is **959595**.

A 20% lighter version of the original color is **FFA7B9**, and **A63C53** is the 20% darker color. If you saturate the color by 10%, you get **E15B71**, and if you desaturate by 10%, it is **E18897**.

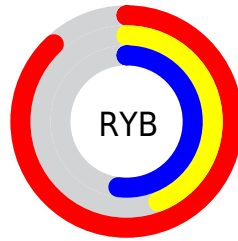
Distribution



Red (88%)

Green (44%)

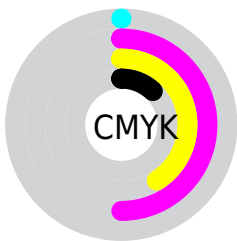
Blue (52%)



Red (88%)

Yellow (44%)

Blue (52%)

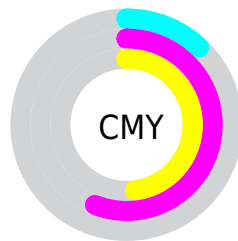


Cyan (0%)

Magenta (50%)

Yellow (41%)

Black (12%)



Cyan (12%)

Magenta (56%)

Yellow (48%)

Brightness & Saturation Gradients

These gradients show how the Hex color E17184 changes by changing the brightness by 10 percent. The first figure shows a shift by +10% for each color and the second figure -10%.

Similar to the brightness gradients but the following saturation gradients show a change of the Hex color E17184 by changing the saturation by 10% instead.

 E17184

 E17184

FFFFFF

 C3576B

 FFA7B9

 A63C53

 FFC3D5

 89213C

 FFE0F1

 6D0026


 FFFDFF

 510012

 380001

 120000

 000000

 E17184

 E17184

 E15B71


 E18897

 E1445F

 E19EA9

 E12E4C

 E1B4BC

 E11739

 E1CBCF

 E10127

 E1E1E1

 E10026

 E1F8F4

 E1FFFF

Harmonies

Analogous

The Analogous color harmony consists of three colors that are next to each other on the color wheel.



D374AD



E17184



D97A5E

Triad

The Triadic color harmony groups three colors that are evenly spaced from another and form a triangle on the color wheel.



E17184



6EA155



009FE2

Complementary

The Complementary color scheme is a pair of colors which are on the opposite of each other on the color wheel.



E17184



71E1CE

Split Complementary

Split-complementary colors differ from the complementary color scheme. The scheme consists of three colors, the original color and two neighbors of the complement color.



00A6CA



E17184



2AA77A

Square

The Square scheme is like the rectangle color scheme, but the four colors are evenly spaced on the color wheel.



E17184



9B9740



00A9A4



6D92E4

Rectangle

The Rectangle color scheme consists of four colors that form a rectangle on the color wheel.



E17184



CA844B



00A9A4



00A2DC

Sweetspot

The Sweet Spot groups the original color and five complimentary colors.



E17184



FFD9DF



CC71E1



80696C



000000



808080

Same Dimension

The Same Dimension uses a secret algorithm to generate beautiful new colors.



E17184



FF6680



E19471



706567



B0001E



300008

Inverse Universe

The Inverse Universe completely reimagines the original color for something new.



E17184



FF6680



71BEE1



706567



B0001E



300008

Previews

White Background



This preview shows how the Hex color E17184 looks on a white background.

Color Contrast Check

Large Text (above 18pt) WCAG AA ✓ Pass

Any Text WCAG AA × Fail

Large Text (above 18pt) WCAG AAA × Fail

Any Text WCAG AAA × Fail

Black Background



Color Contrast Check

Large Text (above 18pt) WCAG AA ✓ Pass

Any Text WCAG AA ✓ Pass

Large Text (above 18pt) WCAG AAA ✓ Pass

Any Text WCAG AAA × Fail

If you want to check with other color combinations, try the [Color Contrast Checker](#).

Hex E17184 Background



This preview shows how black text looks on a background with the Hex color E17184.

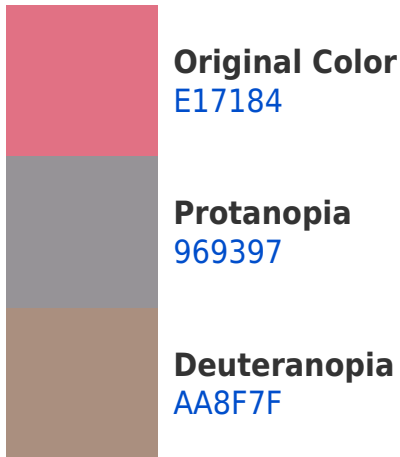


This preview shows how white text looks on a background with the Hex color E17184.

Color Blindness Simulation

Color vision deficiency is a very complex topic, and I could not describe the different causes any better than Wikipedia does, so if you want to learn more, you should check out their [article about color blindness](#).

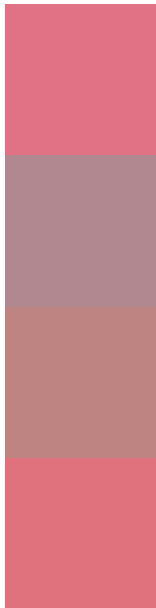
Dichromacy





Tritanopia
E0737B

Trichromacy



Original Color
E17184

Protanomaly
B18790

Deuteranomaly
BE8481

Tritanomaly
E0727E

Monochromacy



Original Color
E17184

Achromatopsia
959595

Achromatomaly
B1888F

CSS Examples

Text

The CSS property to change the color of the text to Hex E17184 is called "color". The color property can be set on classes, ids or directly on the HTML element.

This example shows how text in the color #E17184 looks like.

```
.text, #text, p{  
    color:#E17184  
}
```

If you want to add a text shadow in that color use the text-shadow property, you can generate a text shadow directly with our [CSS Text Shadow Generator](#).

Here you see how black text with a 4 pixel #E17184 colored shadow looks like.

```
.shadow{ text-shadow: 4px 4px 2px #E17184
}
```

Border

The CSS property to change the border of an element to Hex E17184 is called "border". The border property can be set on classes, ids or directly on the HTML element.

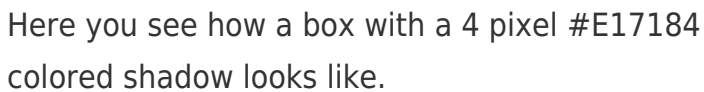
This example shows the color as border, it can be applied via the CSS property "border" or "border-color".

```
.border, #border, table{ border:4px solid
#E17184 }
```

If only the border color should be changed use the property `border-color`.

```
.border{ border-color:#E17184 }
```

If you want to add a box shadow in that color use:



Here you see how a box with a 4 pixel #E17184 colored shadow looks like.

```
.boxshadow{ -moz-box-shadow:4px 4px 4px  
4px #E17184; -webkit-box-shadow:4px 4px  
4px 4px #E17184; box-shadow:4px 4px 4px  
4px #E17184 }
```

Background

The CSS property to change the background color of an element to Hex E17184 is called "background". The background property can be set on classes, ids or directly on the HTML element.

```
.background, #background, body{  
background:#E17184 }
```

If only the background color should be changed can be used:

```
.background{ background-color:#E17184 }
```

This example shows the color as background, it is applied via the CSS property "background".

To optimize and compress your CSS code, you can use our [online CSS compressor and optimizer](#) based on csstidy. If you want to create a linear or radial gradient as background or border, check our [CSS Gradient Generator](#).

Hey! You found this booklet interesting? Support Converting Colors with the new Membership Option!

The pro membership hides all ads, plus gives you double the colors in the color bucket, and more awesome pro features!

[Learn more, Memberships starting at \\$2.50/m!](#)

**Follow me
on Twitter!**

@ConvertingColor