

Converting Colors

Hex(E197A4)

Have a look what the booklet for
Hex(E197A4) contains.

Hex(E197A4)	3
<i>Conversions</i>	4
<i>Details</i>	6
<i>Harmonies</i>	11
<i>Previews</i>	23
<i>Color Blindness Simulation</i>	26
<i>CSS Examples</i>	29

Color

Hex(E197A4)

Conversions

Conversions Part 1

Format	Color
Hex	E197A4
RGB	225, 151, 164
RGB Percent	88%, 59%, 64%
CMY	0.1176, 0.4078, 0.3569
CMYK	0.00, 0.33, 0.27, 0.12
HSL	349°, 55%, 74%
HSV	349°, 33%, 88%
XYZ	48.8188, 40.8211, 40.4282
YIQ	174.6080, 39.9310, 19.7310

Conversions

Conversions Part 2

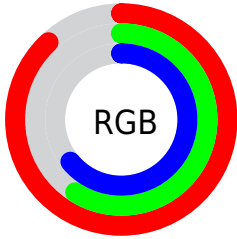
Format	Color
R _Y B	225, 151, 164
Decimal	14784420
CIE Lab	70.05, 29.52, 4.61
CIE LCh	70, 29.875, 8.884
Yxy	40.8211, 0.3753, 0.3138
Android (android.graphics.Color)	4292974500 (0xFFE197A4)
YUV	174.6080, -5.2297, 44.1938
Hunter-Lab	63.8914, 24.5801, 7.2074

Details

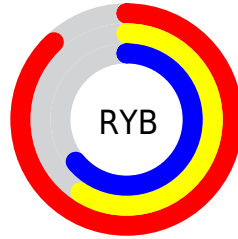
The Hex color **E197A4** is a light color, and the websafe version is hex **CC9999**. A complement of this color would be **97E1D4**, and the grayscale version is **AFAFAF**.

A 20% lighter version of the original color is **FFCEDB**, and **A86370** is the 20% darker color. If you saturate the color by 10%, you get **E18191**, and if you desaturate by 10%, it is **E1ADB7**.

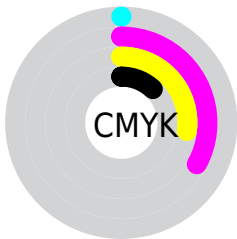
Distribution



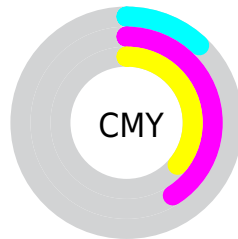
- Red (88%)
- Green (59%)
- Blue (64%)



- Red (88%)
- Yellow (59%)
- Blue (64%)



- Cyan (0%)
- Magenta (33%)
- Yellow (27%)
- Black (12%)



- Cyan (12%)
- Magenta (41%)
- Yellow (36%)

Brightness & Saturation Gradients

These gradients show how the Hex color E197A4 changes by changing the brightness by 10 percent. The first figure shows a shift by +10% for each color and the second figure -10%.

Similar to the brightness gradients but the following saturation gradients show a change of the Hex color E197A4 by changing the saturation by 10% instead.

 E197A4

 E197A4

FFFFFF

 C47D8A

 FFCEDB

 A86370

 FFEAF7

 8D4A58

 723241

 581B2B

 3E0216

 2A0001

 000000

 E197A4

 E197A4

 E18191

 E1ADB7

 E16A7F

 E1C4C9

 E1546C

 E1DBDC

 E13D5A

 E1F1EE

 E12747

 E1FFFF

 E11035

 E10028

Harmonies

Analogous

The Analogous color harmony consists of three colors that are next to each other on the color wheel.



D49ABF



E197A4



DE9B8A

Triad

The Triadic color harmony groups three colors that are evenly spaced from another and form a triangle on the color wheel.



E197A4



98B480



6DB3DD

Complementary

The Complementary color scheme is a pair of colors which are on the opposite of each other on the color wheel.



E197A4



97E1D4

Split Complementary

Split-complementary colors differ from the complementary color scheme. The scheme consists of three colors, the original color and two neighbors of the complement color.



55B9CC



E197A4



79B997

Square

The Square scheme is like the rectangle color scheme, but the four colors are evenly spaced on the color wheel.



E197A4



B6AC75



5DBAB3



94ABE0

Rectangle

The Rectangle color scheme consists of four colors that form a rectangle on the color wheel.



E197A4



D5A07E



5DBAB3



62B5D9

Sweetspot

The Sweet Spot groups the original color and five complimentary colors.



E197A4



FFE6EA



D397E1



807073



000000



808080

Same Dimension

The Same Dimension uses a secret algorithm to generate beautiful new colors.



E197A4



FF9CAD



E1AE97



706567



B0001F



300009

Inverse Universe

The Inverse Universe completely reimagines the original color for something new.



E197A4



FF9CAD



97CAE1



706567



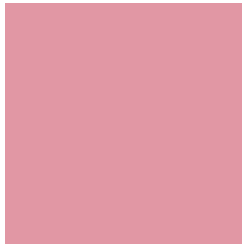
B0001F



300009

Previews

White Background



This preview shows how the Hex color E197A4 looks on a white background.

Color Contrast Check

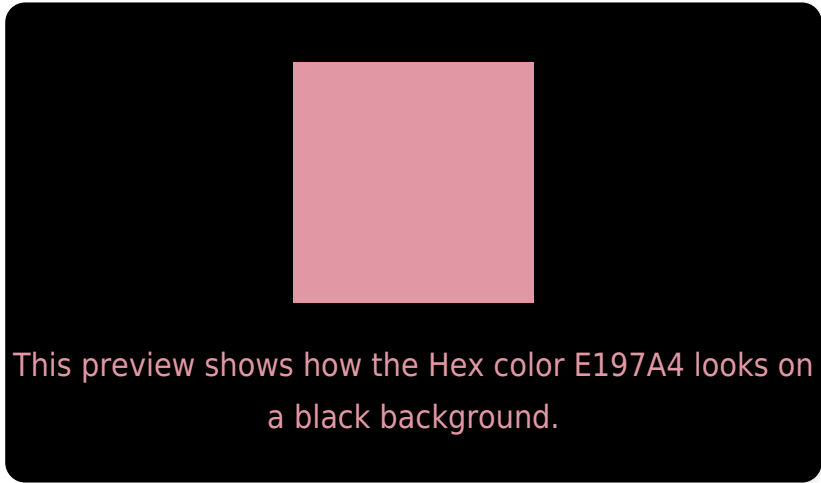
Large Text (above 18pt) WCAG AA × Fail

Any Text WCAG AA × Fail

Large Text (above 18pt) WCAG AAA × Fail

Any Text WCAG AAA × Fail

Black Background



Color Contrast Check

Large Text (above 18pt) WCAG AA ✓ Pass

Any Text WCAG AA ✓ Pass

Large Text (above 18pt) WCAG AAA ✓ Pass

Any Text WCAG AAA ✓ Pass

If you want to check with other color combinations, try the [Color Contrast Checker](#).

Hex E197A4 Background



This preview shows how black text looks on a background with the Hex color E197A4.



This preview shows how white text looks on a background with the Hex color E197A4.

Color Blindness Simulation

Color vision deficiency is a very complex topic, and I could not describe the different causes any better than Wikipedia does, so if you want to learn more, you should check out their [article about color blindness](#).

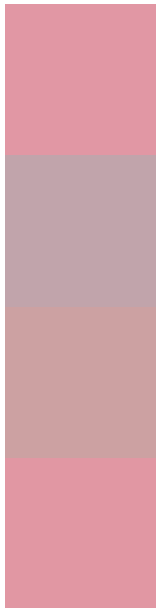
Dichromacy





Tritanopia
E197A3

Trichromacy



Original Color
E197A4

Protanomaly
C1A4AB

Deuteranomaly
CCA1A2

Tritanomaly
E197A3

Monochromacy



Original Color
E197A4

Achromatopsia
AFAFAF

Achromatomaly
C1A6AB

CSS Examples

Text

The CSS property to change the color of the text to Hex E197A4 is called "color". The color property can be set on classes, ids or directly on the HTML element.

This example shows how text in the color #E197A4 looks like.

```
.text, #text, p{  
    color:#E197A4  
}
```

If you want to add a text shadow in that color use the text-shadow property, you can generate a text shadow directly with our [CSS Text Shadow Generator](#).

Here you see how black text with a 4 pixel #E197A4 colored shadow looks like.

```
.shadow{ text-shadow: 4px 4px 2px #E197A4
}
```

Border

The CSS property to change the border of an element to Hex E197A4 is called "border". The border property can be set on classes, ids or directly on the HTML element.

This example shows the color as border, it can be applied via the CSS property "border" or "border-color".

```
.border, #border, table{ border:4px solid
#E197A4 }
```

If only the border color should be changed use the property `border-color`.

```
.border{ border-color:#E197A4 }
```

If you want to add a box shadow in that color use:

Here you see how a box with a 4 pixel #E197A4 colored shadow looks like.

```
.boxshadow{ -moz-box-shadow:4px 4px 4px  
4px #E197A4; -webkit-box-shadow:4px 4px  
4px 4px #E197A4; box-shadow:4px 4px 4px  
4px #E197A4 }
```

Background

The CSS property to change the background color of an element to Hex E197A4 is called "background". The background property can be set on classes, ids or directly on the HTML element.

```
.background, #background, body{  
background:#E197A4 }
```

If only the background color should be changed can be used:

```
.background{ background-color:#E197A4 }
```

This example shows the color as background, it is applied via the CSS property "background".

To optimize and compress your CSS code, you can use our [online CSS compressor and optimizer](#) based on csstidy. If you want to create a linear or radial gradient as background or border, check our [CSS Gradient Generator](#).

Hey! You found this booklet interesting? Support Converting Colors with the new Membership Option!

The pro membership hides all ads, plus gives you double the colors in the color bucket, and more awesome pro features!

[Learn more, Memberships starting at \\$2.50/m!](#)

**Follow me
on Twitter!**

@ConvertingColor