

# Converting Colors

Hex(E19BAB)

Have a look what the booklet for  
Hex(E19BAB) contains.

<b>Hex(E19BAB)</b> .....	3
<i><b>Conversions</b></i> .....	4
<i><b>Details</b></i> .....	6
<i><b>Harmonies</b></i> .....	11
<i><b>Previews</b></i> .....	23
<i><b>Color Blindness Simulation</b></i> .....	26
<i><b>CSS Examples</b></i> .....	29

# **Color**

**Hex(E19BAB)**

# Conversions

## Conversions Part 1

Format	Color
Hex	E19BAB
RGB	225, 155, 171
RGB Percent	88%, 61%, 67%
CMY	0.1176, 0.3922, 0.3294
CMYK	0.00, 0.31, 0.24, 0.12
HSL	346°, 54%, 75%
HSV	346°, 31%, 88%
XYZ	50.1234, 42.3905, 44.0685
YIQ	177.7540, 36.5840, 19.8160

# Conversions

## Conversions Part 2

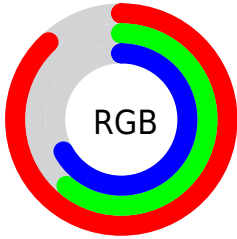
Format	Color
R <sub>Y</sub> B	225, 155, 171
Decimal	14785451
CIE Lab	71.14, 28.36, 2.30
CIE LCh	71, 28.452, 4.637
Yxy	42.3905, 0.3670, 0.3104
Android (android.graphics.Color)	4292975531 (0xFFE19BAB)
YUV	177.7540, -3.3297, 41.4347
Hunter-Lab	65.1080, 23.4792, 5.4450

# Details

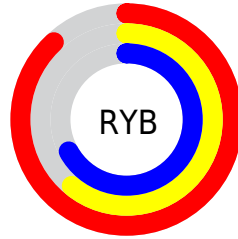
The Hex color **E19BAB** is a light color, and the websafe version is hex **CC9999**. A complement of this color would be **9BE1D1**, and the grayscale version is **B2B2B2**.

A 20% lighter version of the original color is **FFD2E2**, and **A86777** is the 20% darker color. If you saturate the color by 10%, you get **E1849A**, and if you desaturate by 10%, it is **E1B2BC**.

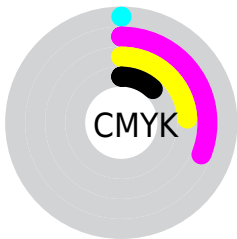
# Distribution



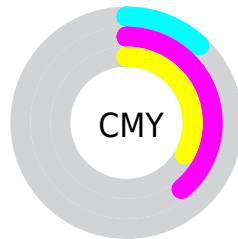
- Red (88%)
- Green (61%)
- Blue (67%)



- Red (88%)
- Yellow (61%)
- Blue (67%)



- Cyan (0%)
- Magenta (31%)
- Yellow (24%)
- Black (12%)



- Cyan (12%)
- Magenta (39%)
- Yellow (33%)

# Brightness & Saturation Gradients

These gradients show how the Hex color E19BAB changes by changing the brightness by 10 percent. The first figure shows a shift by +10% for each color and the second figure -10%.

Similar to the brightness gradients but the following saturation gradients show a change of the Hex color E19BAB by changing the saturation by 10% instead.



 E19BAB

 E19BAB

FFFFFF

 C48191

 FFD2E2

 A86777

 FFEFFF

 8D4E5E

 723647

 581F30

 3F061C

 2B0001

 000000

 E19BAB

 E19BAB

 E1849A

 E1B2BC

 E16E88

 E1C8CE

 E15777

 E1DEDF

 E14166

 E1F5F0

 E12B54

 E1FFFF

 E11443

 E10033

# Harmonies

## Analogous

The Analogous color harmony consists of three colors that are next to each other on the color wheel.



D39EC5



E19BAB



E19E92

# Triad

The Triadic color harmony groups three colors that are evenly spaced from another and form a triangle on the color wheel.



E19BAB



A1B583



70B7DC

# Complementary

The Complementary color scheme is a pair of colors which are on the opposite of each other on the color wheel.



E19BAB



9BE1D1

# Split Complementary

Split-complementary colors differ from the complementary color scheme. The scheme consists of three colors, the original color and two neighbors of the complement color.



5EBBCB



E19BAB



83BB97

# Square

The Square scheme is like the rectangle color scheme, but the four colors are evenly spaced on the color wheel.



E19BAB



BDAE7A



68BDB1



93AFE1

# Rectangle

The Rectangle color scheme consists of four colors that form a rectangle on the color wheel.



E19BAB



D9A285



68BDB1



67B9D8



# Sweetspot

The Sweet Spot groups the original color and five complimentary colors.



E19BAB



FFE8ED



D19BE1



807175



000000



808080



# Same Dimension

The Same Dimension uses a secret algorithm to generate beautiful new colors.



E19BAB



FFA1B6



E1AE9B



706568



B00028



30000B



# Inverse Universe

The Inverse Universe completely reimagines the original color for something new.



E19BAB



FFA1B6



9BCEE1



706568



B00028



30000B



# Previews

## White Background



This preview shows how the Hex color E19BAB looks on a white background.

## Color Contrast Check

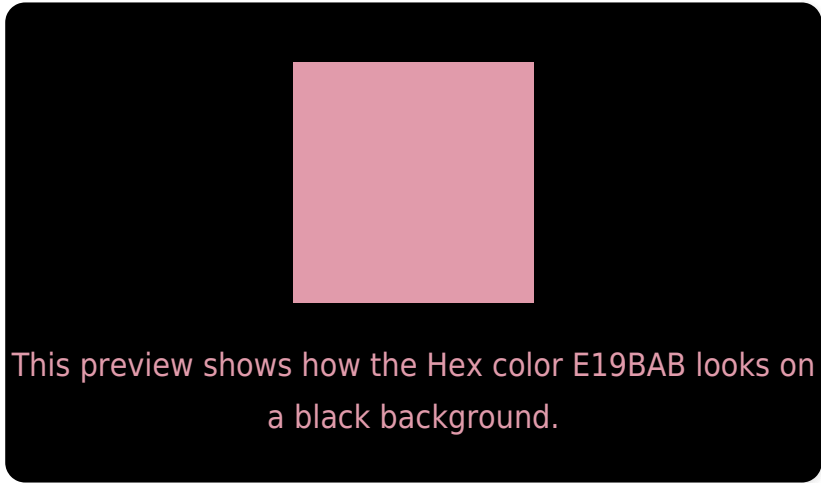
Large Text (above 18pt) WCAG AA × Fail

Any Text WCAG AA × Fail

Large Text (above 18pt) WCAG AAA × Fail

Any Text WCAG AAA × Fail

# Black Background



## Color Contrast Check

Large Text (above 18pt) WCAG AA ✓ Pass

Any Text WCAG AA ✓ Pass

Large Text (above 18pt) WCAG AAA ✓ Pass

Any Text WCAG AAA ✓ Pass

If you want to check with other color combinations, try the [Color Contrast Checker](#).



## Hex E19BAB Background



This preview shows how black text looks on a background with the Hex color E19BAB.



This preview shows how white text looks on a background with the Hex color E19BAB.

# Color Blindness Simulation

Color vision deficiency is a very complex topic, and I could not describe the different causes any better than Wikipedia does, so if you want to learn more, you should check out their [article about color blindness](#).

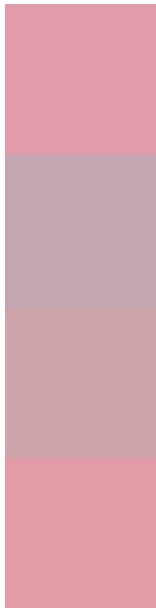
## Dichromacy





**Tritanopia**  
E19CA7

# Trichromacy



**Original Color**  
E19BAB

**Protanomaly**  
C2A7B2

**Deuteranomaly**  
CDA4AA

**Tritanomaly**  
E19CA8

# Monochromacy



**Original Color**  
E19BAB

**Achromatopsia**  
B2B2B2

**Achromatomaly**  
C3AAAF

# CSS Examples

## Text

The CSS property to change the color of the text to Hex E19BAB is called "color". The color property can be set on classes, ids or directly on the HTML element.

This example shows how text in the color #E19BAB looks like.

```
.text, #text, p{  
    color:#E19BAB  
}
```

If you want to add a text shadow in that color use the text-shadow property, you can generate a text shadow directly with our [CSS Text Shadow Generator](#).

Here you see how black text with a 4 pixel #E19BAB colored shadow looks like.

```
.shadow{ text-shadow: 4px 4px 2px #E19BAB
}
```

## Border

The CSS property to change the border of an element to Hex E19BAB is called "border". The border property can be set on classes, ids or directly on the HTML element.

This example shows the color as border, it can be applied via the CSS property "border" or "border-color".

```
.border, #border, table{ border:4px solid
#E19BAB }
```

If only the border color should be changed use the property `border-color`.

```
.border{ border-color:#E19BAB }
```

If you want to add a box shadow in that color use:

Here you see how a box with a 4 pixel #E19BAB colored shadow looks like.

```
.boxshadow{ -moz-box-shadow:4px 4px 4px  
4px #E19BAB; -webkit-box-shadow:4px 4px  
4px 4px #E19BAB; box-shadow:4px 4px 4px  
4px #E19BAB }
```

# Background

The CSS property to change the background color of an element to Hex E19BAB is called "background". The background property can be set on classes, ids or directly on the HTML element.

```
.background, #background, body{  
background:#E19BAB }
```

If only the background color should be changed can be used:

```
.background{ background-color:#E19BAB }
```

This example shows the color as background, it is applied via the CSS property "background".

To optimize and compress your CSS code, you can use our [online CSS compressor and optimizer](#) based on csstidy. If you want to create a linear or radial gradient as background or border, check our [CSS Gradient Generator](#).



Hey! You found this booklet interesting? Support Converting Colors with the new Membership Option!

The pro membership hides all ads, plus gives you double the colors in the color bucket, and more awesome pro features!

**[Learn more, Memberships starting at \\$2.50/m!](#)**

**Follow me  
on Twitter!**

@ConvertingColor