

Converting Colors

Hex(E19BCD)

Have a look what the booklet for
Hex(E19BCD) contains.

Hex(E19BCD)	3
<i>Conversions</i>	4
<i>Details</i>	6
<i>Harmonies</i>	11
<i>Previews</i>	23
<i>Color Blindness Simulation</i>	26
<i>CSS Examples</i>	29

Color

Hex(E19BCD)

Conversions

Conversions Part 1

Format	Color
Hex	E19BCD
RGB	225, 155, 205
RGB Percent	88%, 61%, 80%
CMY	0.1176, 0.3922, 0.1961
CMYK	0.00, 0.31, 0.09, 0.12
HSL	317°, 54%, 75%
HSV	317°, 31%, 88%
XYZ	53.7921, 43.8580, 63.3879
YIQ	181.6300, 25.6700, 30.3900

Conversions

Conversions Part 2

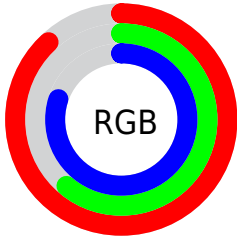
Format	Color
R_{YB}	225, 155, 205
Decimal	14785485
CIE _{Lab}	72.13, 33.70, -15.04
CIE _{LCh}	72, 36.904, 335.942
Yxy	43.8580, 0.3340, 0.2723
Android (android.graphics.Color)	4292975565 (0xFFE19BCD)
YUV	181.6300, 11.5214, 38.0355
Hunter-Lab	66.2254, 29.0937, -10.3919

Details

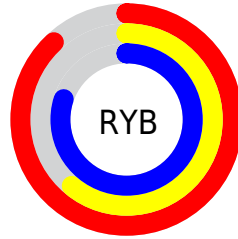
The Hex color **E19BCD** is a light color, and the websafe version is hex **CC99CC**. A complement of this color would be **9BE1AF**, and the grayscale version is **B6B6B6**.

A 20% lighter version of the original color is **FFD2FF**, and **A96797** is the 20% darker color. If you saturate the color by 10%, you get **E184C7**, and if you desaturate by 10%, it is **E1B2D3**.

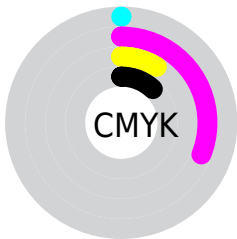
Distribution



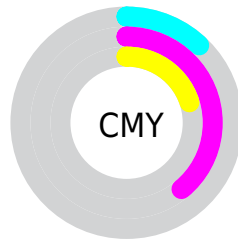
- Red (88%)
- Green (61%)
- Blue (80%)



- Red (88%)
- Yellow (61%)
- Blue (80%)



- Cyan (0%)
- Magenta (31%)
- Yellow (9%)
- Black (12%)



- Cyan (12%)
- Magenta (39%)
- Yellow (20%)

Brightness & Saturation Gradients

These gradients show how the Hex color E19BCD changes by changing the brightness by 10 percent. The first figure shows a shift by +10% for each color and the second figure -10%.

Similar to the brightness gradients but the following saturation gradients show a change of the Hex color E19BCD by changing the saturation by 10% instead.

 E19BCD

FFFFFF

 FFD2FF

 FFEFFF

 E19BCD

 C580B1

 A96797

 8E4E7D

 733564

 5A1D4C

 410335

 2B0020

 000004

 000000

 E19BCD

 E19BCD

 E184C7

 E1B2D3

 E16EC0

 E1C8DA

 E157BA


 E1DEE0

 E141B3

 E1F5E7

 E12BAD

 E1FFED

 E114A6

 E1FFF4

 E100A1

 E1FFFA

 E1FFFF

Harmonies

Analogous

The Analogous color harmony consists of three colors that are next to each other on the color wheel.



BEA6E7



E19BCD



F297AB

Triad

The Triadic color harmony groups three colors that are evenly spaced from another and form a triangle on the color wheel.



E19BCD



C1B16D



2EC1D7

Complementary

The Complementary color scheme is a pair of colors which are on the opposite of each other on the color wheel.



E19BCD



9BE1AF

Split Complementary

Split-complementary colors differ from the complementary color scheme. The scheme consists of three colors, the original color and two neighbors of the complement color.



48C3B7



E19BCD



9DBB79

Square

The Square scheme is like the rectangle color scheme, but the four colors are evenly spaced on the color wheel.



E19BCD



DEA574



74C194



54BCEE

Rectangle

The Rectangle color scheme consists of four colors that form a rectangle on the color wheel.



E19BCD



F39995



74C194



31C2CD

Sweetspot

The Sweet Spot groups the original color and five complimentary colors.



E19BCD



FFE8F8



AF9BE1



80717B



000000



808080

Same Dimension

The Same Dimension uses a secret algorithm to generate beautiful new colors.



E19BCD



FFA1E4



E19BAA



70656D



B0007E



300023

Inverse Universe

The Inverse Universe completely reimagines the original color for something new.



E19BCD



FFA1E4



9BE1D2



70656D



B0007E



300023

Previews

White Background



This preview shows how the Hex color E19BCD looks on a white background.

Color Contrast Check

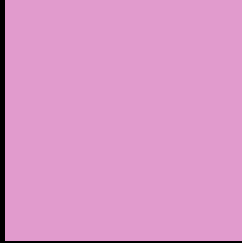
Large Text (above 18pt) WCAG AA × Fail

Any Text WCAG AA × Fail

Large Text (above 18pt) WCAG AAA × Fail

Any Text WCAG AAA × Fail

Black Background



This preview shows how the Hex color E19BCD looks on a black background.

Color Contrast Check

Large Text (above 18pt) WCAG AA ✓ Pass

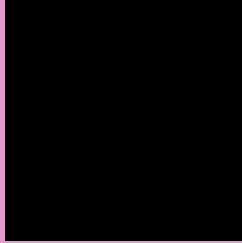
Any Text WCAG AA ✓ Pass

Large Text (above 18pt) WCAG AAA ✓ Pass

Any Text WCAG AAA ✓ Pass

If you want to check with other color combinations, try the [Color Contrast Checker](#).

Hex E19BCD Background



This preview shows how black text looks on a background with the Hex color E19BCD.

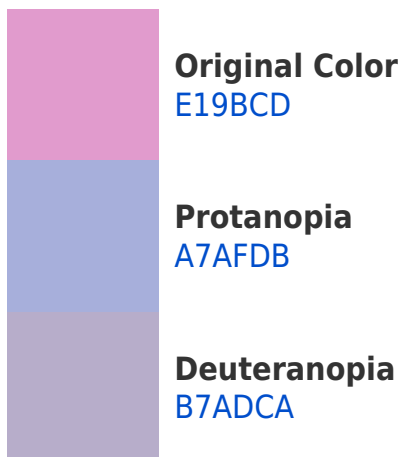


This preview shows how white text looks on a background with the Hex color E19BCD.

Color Blindness Simulation

Color vision deficiency is a very complex topic, and I could not describe the different causes any better than Wikipedia does, so if you want to learn more, you should check out their [article about color blindness](#).

Dichromacy





Tritanopia
DDA1AD

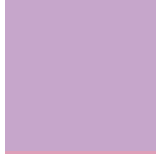
Trichromacy



Original Color
E19BCD



Protanomaly
BCA8D6



Deuteranomaly
C6A6CB



Tritanomaly
DE9FB9

Monochromacy



Original Color
E19BCD



Achromatopsia
B6B6B6



Achromatomaly
C6ACBE

CSS Examples

Text

The CSS property to change the color of the text to Hex E19BCD is called "color". The color property can be set on classes, ids or directly on the HTML element.

This example shows how text in the color #E19BCD looks like.

```
.text, #text, p{  
    color:#E19BCD  
}
```

If you want to add a text shadow in that color use the text-shadow property, you can generate a text shadow directly with our [CSS Text Shadow Generator](#).

Here you see how black text with a 4 pixel #E19BCD colored shadow looks like.

```
.shadow{ text-shadow: 4px 4px 2px #E19BCD
}
```

Border

The CSS property to change the border of an element to Hex E19BCD is called "border". The border property can be set on classes, ids or directly on the HTML element.

This example shows the color as border, it can be applied via the CSS property "border" or "border-color".

```
.border, #border, table{ border:4px solid
#E19BCD }
```

If only the border color should be changed use the property `border-color`.

```
.border{ border-color:#E19BCD }
```

If you want to add a box shadow in that color use:

Here you see how a box with a 4 pixel #E19BCD colored shadow looks like.

```
.boxshadow{ -moz-box-shadow:4px 4px 4px  
4px #E19BCD; -webkit-box-shadow:4px 4px  
4px 4px #E19BCD; box-shadow:4px 4px 4px  
4px #E19BCD }
```

Background

The CSS property to change the background color of an element to Hex E19BCD is called "background". The background property can be set on classes, ids or directly on the HTML element.

```
.background, #background, body{  
background:#E19BCD }
```

If only the background color should be changed can be used:

```
.background{ background-color:#E19BCD }
```

This example shows the color as background, it is applied via the CSS property "background".

To optimize and compress your CSS code, you can use our [online CSS compressor and optimizer](#) based on csstidy. If you want to create a linear or radial gradient as background or border, check our [CSS Gradient Generator](#).

Hey! You found this booklet interesting? Support Converting Colors with the new Membership Option!

The pro membership hides all ads, plus gives you double the colors in the color bucket, and more awesome pro features!

[Learn more, Memberships starting at \\$2.50/m!](#)

**Follow me
on Twitter!**

@ConvertingColor