

# Converting Colors

Hex(E19EA8)

Have a look what the booklet for  
Hex(E19EA8) contains.

<b>Hex(E19EA8)</b> .....	3
<i><b>Conversions</b></i> .....	4
<i><b>Details</b></i> .....	6
<i><b>Harmonies</b></i> .....	11
<i><b>Previews</b></i> .....	23
<i><b>Color Blindness Simulation</b></i> .....	26
<i><b>CSS Examples</b></i> .....	29

# **Color**

**Hex(E19EA8)**

# Conversions

## Conversions Part 1

Format	Color
Hex	E19EA8
RGB	225, 158, 168
RGB Percent	88%, 62%, 66%
CMY	0.1176, 0.3804, 0.3412
CMYK	0.00, 0.30, 0.25, 0.12
HSL	351°, 53%, 75%
HSV	351°, 30%, 88%
XYZ	50.3461, 43.2884, 42.7478
YIQ	179.1730, 36.7220, 17.3140

# Conversions

## Conversions Part 2

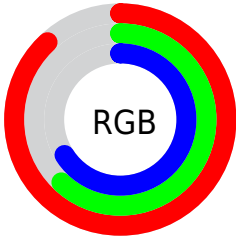
Format	Color
R <sub>Y</sub> B	225, 158, 168
Decimal	14786216
CIE Lab	71.75, 26.32, 4.85
CIE LCh	72, 26.765, 10.432
Yxy	43.2884, 0.3692, 0.3174
Android (android.graphics.Color)	4292976296 (0xFFE19EA8)
YUV	179.1730, -5.5083, 40.1903
Hunter-Lab	65.7939, 21.4503, 7.5337

# Details

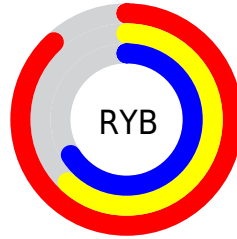
The Hex color **E19EA8** is a light color, and the websafe version is hex **CC9999**. A complement of this color would be **9EE1D7**, and the grayscale version is **B3B3B3**.

A 20% lighter version of the original color is **FFD5DF**, and **A86A74** is the 20% darker color. If you saturate the color by 10%, you get **E18895**, and if you desaturate by 10%, it is **E1B5BB**.

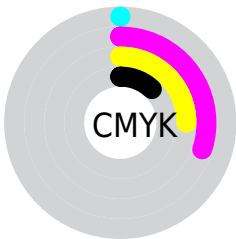
# Distribution



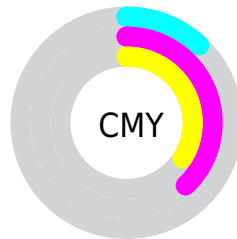
- Red (88%)
- Green (62%)
- Blue (66%)



- Red (88%)
- Yellow (62%)
- Blue (66%)



- Cyan (0%)
- Magenta (30%)
- Yellow (25%)
- Black (12%)



- Cyan (12%)
- Magenta (38%)
- Yellow (34%)

# Brightness & Saturation Gradients

These gradients show how the Hex color E19EA8 changes by changing the brightness by 10 percent. The first figure shows a shift by +10% for each color and the second figure -10%.

Similar to the brightness gradients but the following saturation gradients show a change of the Hex color E19EA8 by changing the saturation by 10% instead.



 E19EA8

 E19EA8

FFFFFF

 C4848E

 FFD5DF

 A86A74

 FFF2FC

 8D515C

 723944

 58222E

 3F0B19

 2B0000

 000000

 E19EA8


 E19EA8

 E18895

 E1B5BB

 E17182

 E1CBCE

 E15B6F

 E1E2E1

 E1445B

 E1F8F5

 E12E48

 E1FFFF

 E11735

 E10122

 E10022

# Harmonies

## Analogous

The Analogous color harmony consists of three colors that are next to each other on the color wheel.



D6A0C1



E19EA8



DEA291

# Triad

The Triadic color harmony groups three colors that are evenly spaced from another and form a triangle on the color wheel.



E19EA8



9EB88A



7CB7DD

# Complementary

The Complementary color scheme is a pair of colors which are on the opposite of each other on the color wheel.



E19EA8



9EE1D7

# Split Complementary

Split-complementary colors differ from the complementary color scheme. The scheme consists of three colors, the original color and two neighbors of the complement color.



68BCCF



E19EA8



82BC9F

# Square

The Square scheme is like the rectangle color scheme, but the four colors are evenly spaced on the color wheel.



E19EA8



B9B180



6CBEB8



9EAFDF

# Rectangle

The Rectangle color scheme consists of four colors that form a rectangle on the color wheel.



E19EA8



D6A686



6CBEB8



73B9DA



# Sweetspot

The Sweet Spot groups the original color and five complimentary colors.



E19EA8



FFE8EB



D79EE1



807174



000000



808080



# Same Dimension

The Same Dimension uses a secret algorithm to generate beautiful new colors.



E19EA8



FFA3B1



E1B59E



706567



B0001A



300007



# Inverse Universe

The Inverse Universe completely reimagines the original color for something new.



E19EA8



FFA3B1



9ECAE1



706567



B0001A



300007



# Previews

## White Background



This preview shows how the Hex color E19EA8 looks on a white background.

## Color Contrast Check

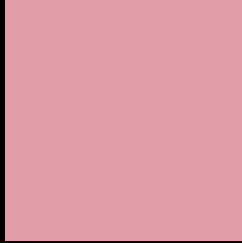
Large Text (above 18pt) WCAG AA × Fail

Any Text WCAG AA × Fail

Large Text (above 18pt) WCAG AAA × Fail

Any Text WCAG AAA × Fail

# Black Background



This preview shows how the Hex color E19EA8 looks on a black background.

## Color Contrast Check

Large Text (above 18pt) WCAG AA ✓ Pass

Any Text WCAG AA ✓ Pass

Large Text (above 18pt) WCAG AAA ✓ Pass

Any Text WCAG AAA ✓ Pass

If you want to check with other color combinations, try the [Color Contrast Checker](#).



## Hex E19EA8 Background



This preview shows how black text looks on a background with the Hex color E19EA8.



This preview shows how white text looks on a background with the Hex color E19EA8.

# Color Blindness Simulation

Color vision deficiency is a very complex topic, and I could not describe the different causes any better than Wikipedia does, so if you want to learn more, you should check out their [article about color blindness](#).

## Dichromacy



**Original Color**  
E19EA8

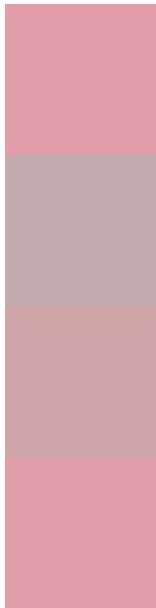
**Protanopia**  
B3AFB2

**Deuteranopia**  
C5AAA6



**Tritanopia**  
E19EAA

# Trichromacy



**Original Color**  
E19EA8

**Protanomaly**  
C4A9AE

**Deuteranomaly**  
CFA6A7

**Tritanomaly**  
E19EA9

# Monochromacy



**Original Color**  
E19EA8

**Achromatopsia**  
B3B3B3

**Achromatomaly**  
C4ABAF

# CSS Examples

## Text

The CSS property to change the color of the text to Hex E19EA8 is called "color". The color property can be set on classes, ids or directly on the HTML element.

This example shows how text in the color #E19EA8 looks like.

```
.text, #text, p{  
    color:#E19EA8  
}
```

If you want to add a text shadow in that color use the text-shadow property, you can generate a text shadow directly with our [CSS Text Shadow Generator](#).

Here you see how black text with a 4 pixel #E19EA8 colored shadow looks like.

```
.shadow{ text-shadow: 4px 4px 2px #E19EA8
}
```

## Border

The CSS property to change the border of an element to Hex E19EA8 is called "border". The border property can be set on classes, ids or directly on the HTML element.

This example shows the color as border, it can be applied via the CSS property "border" or "border-color".

```
.border, #border, table{ border:4px solid
#E19EA8 }
```

If only the border color should be changed use the property `border-color`.

```
.border{ border-color:#E19EA8 }
```

If you want to add a box shadow in that color use:

Here you see how a box with a 4 pixel #E19EA8 colored shadow looks like.

```
.boxshadow{ -moz-box-shadow:4px 4px 4px  
4px #E19EA8; -webkit-box-shadow:4px 4px  
4px 4px #E19EA8; box-shadow:4px 4px 4px  
4px #E19EA8 }
```

# Background

The CSS property to change the background color of an element to Hex E19EA8 is called "background". The background property can be set on classes, ids or directly on the HTML element.

```
.background, #background, body{  
background:#E19EA8 }
```

If only the background color should be changed can be used:

```
.background{ background-color:#E19EA8 }
```

This example shows the color as background, it is applied via the CSS property "background".

To optimize and compress your CSS code, you can use our [online CSS compressor and optimizer](#) based on csstidy. If you want to create a linear or radial gradient as background or border, check our [CSS Gradient Generator](#).



Hey! You found this booklet interesting? Support Converting Colors with the new Membership Option!

The pro membership hides all ads, plus gives you double the colors in the color bucket, and more awesome pro features!

**[Learn more, Memberships starting at \\$2.50/m!](#)**

**Follow me  
on Twitter!**

@ConvertingColor