

Converting Colors

Hex(E1A8B5)

Have a look what the booklet for
Hex(E1A8B5) contains.

Hex(E1A8B5)	3
<i>Conversions</i>	4
<i>Details</i>	6
<i>Harmonies</i>	11
<i>Previews</i>	23
<i>Color Blindness Simulation</i>	26
<i>CSS Examples</i>	29

Color

Hex(E1A8B5)

Conversions

Conversions Part 1

Format	Color
Hex	E1A8B5
RGB	225, 168, 181
RGB Percent	88%, 66%, 71%
CMY	0.1176, 0.3412, 0.2902
CMYK	0.00, 0.25, 0.20, 0.12
HSL	346°, 49%, 77%
HSV	346°, 25%, 88%
XYZ	53.3945, 47.3490, 50.0411
YIQ	186.5250, 29.7990, 16.1270

Conversions

Conversions Part 2

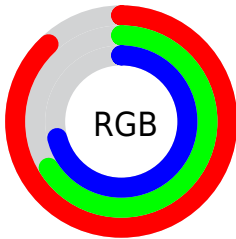
Format	Color
R_{YB}	225, 168, 181
Decimal	14788789
CIE _{Lab}	74.41, 22.85, 1.54
CIE _{LCh}	74, 22.905, 3.858
Yxy	47.3490, 0.3541, 0.3140
Android (android.graphics.Color)	4292978869 (0xFFE1A8B5)
YUV	186.5250, -2.7238, 33.7426
Hunter-Lab	68.8106, 18.0907, 5.0500

Details

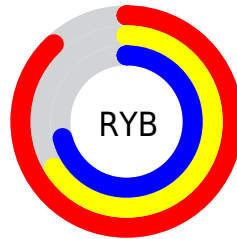
The Hex color **E1A8B5** is a light color, and the websafe version is hex **CC9999**. A complement of this color would be **A8E1D4**, and the grayscale version is **BBBBBB**.

A 20% lighter version of the original color is **FFDFED**, and **A97480** is the 20% darker color. If you saturate the color by 10%, you get **E192A4**, and if you desaturate by 10%, it is **E1BFC6**.

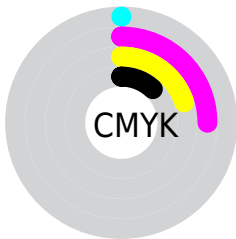
Distribution



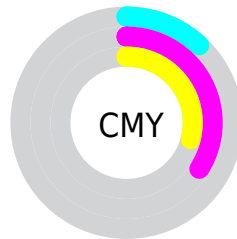
- Red (88%)
- Green (66%)
- Blue (71%)



- Red (88%)
- Yellow (66%)
- Blue (71%)



- Cyan (0%)
- Magenta (25%)
- Yellow (20%)
- Black (12%)



- Cyan (12%)
- Magenta (34%)
- Yellow (29%)

Brightness & Saturation Gradients

These gradients show how the Hex color E1A8B5 changes by changing the brightness by 10 percent. The first figure shows a shift by +10% for each color and the second figure -10%.

Similar to the brightness gradients but the following saturation gradients show a change of the Hex color E1A8B5 by changing the saturation by 10% instead.

 E1A8B5

 E1A8B5

FFFFFF

 C58D9A

 FFDFED

 A97480

 FFFCFF

 8E5B67

 73434F

 5A2C38

 411523


 2B000D

 000000

 E1A8B5

 E1A8B5

 E192A4

 E1BFC6

 E17B92

 E1D5D8

 E16581

 E1EBE9

 E14E70

 E1FFFA

 E1385E

 E1FFFF

 E1214D

 E10B3B

 E10033

Harmonies

Analogous

The Analogous color harmony consists of three colors that are next to each other on the color wheel.



D5ABCA



E1A8B5



E1AAA1

Triad

The Triadic color harmony groups three colors that are evenly spaced from another and form a triangle on the color wheel.



E1A8B5



ADBD94



88BEDC

Complementary

The Complementary color scheme is a pair of colors which are on the opposite of each other on the color wheel.



E1A8B5



A8E1D4

Split Complementary

Split-complementary colors differ from the complementary color scheme. The scheme consists of three colors, the original color and two neighbors of the complement color.



7CC2CE



E1A8B5



95C1A4

Square

The Square scheme is like the rectangle color scheme, but the four colors are evenly spaced on the color wheel.



E1A8B5



C4B68D



82C3B9



A2B8E1

Rectangle

The Rectangle color scheme consists of four colors that form a rectangle on the color wheel.



E1A8B5



DBAD96



82C3B9



82C0D8

Sweetspot

The Sweet Spot groups the original color and five complimentary colors.



E1A8B5



FFEBEF



D4A8E1



807376



000000



808080

Same Dimension

The Same Dimension uses a secret algorithm to generate beautiful new colors.



E1A8B5



FFB3C4



E1B7A8



706568



B00028



30000B

Inverse Universe

The Inverse Universe completely reimagines the original color for something new.



E1A8B5



FFB3C4



A8D2E1



706568



B00028



30000B

Previews

White Background



This preview shows how the Hex color E1A8B5 looks on a white background.

Color Contrast Check

Large Text (above 18pt) WCAG AA × Fail

Any Text WCAG AA × Fail

Large Text (above 18pt) WCAG AAA × Fail

Any Text WCAG AAA × Fail

Black Background



This preview shows how the Hex color E1A8B5 looks on a black background.

Color Contrast Check

Large Text (above 18pt) WCAG AA ✓ Pass

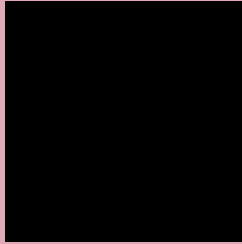
Any Text WCAG AA ✓ Pass

Large Text (above 18pt) WCAG AAA ✓ Pass

Any Text WCAG AAA ✓ Pass

If you want to check with other color combinations, try the [Color Contrast Checker](#).

Hex E1A8B5 Background



This preview shows how black text looks on a background with the Hex color E1A8B5.



This preview shows how white text looks on a background with the Hex color E1A8B5.

Color Blindness Simulation

Color vision deficiency is a very complex topic, and I could not describe the different causes any better than Wikipedia does, so if you want to learn more, you should check out their [article about color blindness](#).

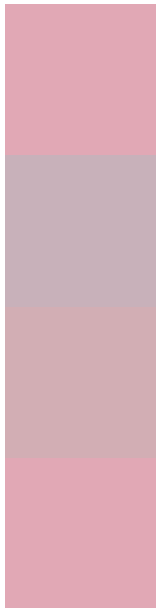
Dichromacy





Tritanopia
E1A8B5

Trichromacy



Original Color
E1A8B5

Protanomaly
C8B1BA

Deuteranomaly
D2AEB4

Tritanomaly
E1A8B5

Monochromacy



Original Color
E1A8B5

Achromatopsia
BBBBBB

Achromatomaly
C9B4B9

CSS Examples

Text

The CSS property to change the color of the text to Hex E1A8B5 is called "color". The color property can be set on classes, ids or directly on the HTML element.

This example shows how text in the color #E1A8B5 looks like.

```
.text, #text, p{  
  color:#E1A8B5  
}
```

If you want to add a text shadow in that color use the text-shadow property, you can generate a text shadow directly with our [CSS Text Shadow Generator](#).

Here you see how black text with a 4 pixel #E1A8B5 colored shadow looks like.

```
.shadow{ text-shadow: 4px 4px 2px #E1A8B5
}
```

Border

The CSS property to change the border of an element to Hex E1A8B5 is called "border". The border property can be set on classes, ids or directly on the HTML element.

This example shows the color as border, it can be applied via the CSS property "border" or "border-color".

```
.border, #border, table{ border:4px solid
#E1A8B5 }
```

If only the border color should be changed use the property `border-color`.

```
.border{ border-color:#E1A8B5 }
```

If you want to add a box shadow in that color use:

Here you see how a box with a 4 pixel #E1A8B5 colored shadow looks like.

```
.boxshadow{ -moz-box-shadow:4px 4px 4px  
4px #E1A8B5; -webkit-box-shadow:4px 4px  
4px 4px #E1A8B5; box-shadow:4px 4px 4px  
4px #E1A8B5 }
```

Background

The CSS property to change the background color of an element to Hex E1A8B5 is called "background". The background property can be set on classes, ids or directly on the HTML element.

```
.background, #background, body{  
background:#E1A8B5 }
```

If only the background color should be changed can be used:

```
.background{ background-color:#E1A8B5 }
```

This example shows the color as background, it is applied via the CSS property "background".

To optimize and compress your CSS code, you can use our [online CSS compressor and optimizer](#) based on csstidy. If you want to create a linear or radial gradient as background or border, check our [CSS Gradient Generator](#).

Hey! You found this booklet interesting? Support Converting Colors with the new Membership Option!

The pro membership hides all ads, plus gives you double the colors in the color bucket, and more awesome pro features!

[Learn more, Memberships starting at \\$2.50/m!](#)

**Follow me
on Twitter!**

@ConvertingColor