

Converting Colors

Hex(E1B5AC)

Have a look what the booklet for
Hex(E1B5AC) contains.

| | |
|--|----|
| Hex(E1B5AC) | 3 |
| <i>Conversions</i> | 4 |
| <i>Details</i> | 6 |
| <i>Harmonies</i> | 11 |
| <i>Previews</i> | 23 |
| <i>Color Blindness Simulation</i> | 26 |
| <i>CSS Examples</i> | 29 |

Color

Hex(E1B5AC)

Conversions

Conversions Part 1

| Format | Color |
|-------------|---------------------------|
| Hex | E1B5AC |
| RGB | 225, 181, 172 |
| RGB Percent | 88%, 71%, 67% |
| CMY | 0.1176, 0.2902, 0.3255 |
| CMYK | 0.00, 0.20, 0.24, 0.12 |
| HSL | 10°, 47%, 78% |
| HSV | 10°, 24%, 88% |
| XYZ | 55.0216, 52.0339, 46.1733 |
| YIQ | 193.1300, 29.1130, 6.5290 |

Conversions

Conversions Part 2

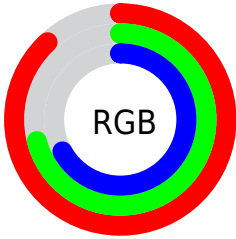
| Format | Color |
|-------------------------------------|--------------------------------|
| R _Y B | 225, 183, 172 |
| Decimal | 14792108 |
| CIE Lab | 77.30, 14.55, 10.60 |
| CIE LCh | 77, 18.006, 36.085 |
| Yxy | 52.0339, 0.3591, 0.3396 |
| Android (android.graphics.Color) | 4292982188 (0xFFE1B5AC) |
| YUV | 193.1300, -10.4171, 27.9500 |
| Hunter-Lab | 72.1345, 9.9180, 12.5426 |

Details

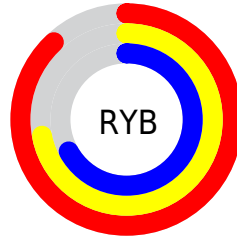
The Hex color **E1B5AC** is a light color, and the websafe version is hex **FFCCCC**. A complement of this color would be **ACD8E1**, and the grayscale version is **C1C1C1**.

A 20% lighter version of the original color is **FFEDE3**, and **A98078** is the 20% darker color. If you saturate the color by 10%, you get **E1A296**, and if you desaturate by 10%, it is **E1C8C3**.

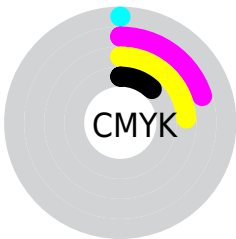
Distribution



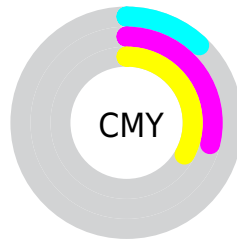
- Red (88%)
- Green (71%)
- Blue (67%)



- Red (88%)
- Yellow (72%)
- Blue (67%)



- Cyan (0%)
- Magenta (20%)
- Yellow (24%)
- Black (12%)



- Cyan (12%)
- Magenta (29%)
- Yellow (33%)

Brightness & Saturation Gradients

These gradients show how the Hex color E1B5AC changes by changing the brightness by 10 percent. The first figure shows a shift by +10% for each color and the second figure -10%.

Similar to the brightness gradients but the following saturation gradients show a change of the Hex color E1B5AC by changing the saturation by 10% instead.

 E1B5AC

FFFFFF

 FFEDE3

 E1B5AC

 C59A91

 A98078

 8E675F

 744F47

 5A3831

 42221C

 2B0D02

 080000

 000000

 E1B5AC

 E1B5AC

 E1A296

 E1C8C3

 E1907F

 E1DAD9

 E17D69

 E1EDF0

 E16A52

 E1FFFF

 E1583C

 E14525

 E1320F

 E12600

Harmonies

Analogous

The Analogous color harmony consists of three colors that are next to each other on the color wheel.



E1B3BC



E1B5AC



D8B9A1

Triad

The Triadic color harmony groups three colors that are evenly spaced from another and form a triangle on the color wheel.



E1B5AC



A3C7B1



B1BFEO

Complementary

The Complementary color scheme is a pair of colors which are on the opposite of each other on the color wheel.



E1B5AC



ACD8E1

Split Complementary

Split-complementary colors differ from the complementary color scheme. The scheme consists of three colors, the original color and two neighbors of the complement color.



9DC4DD



E1B5AC



96C9C2

Square

The Square scheme is like the rectangle color scheme, but the four colors are evenly spaced on the color wheel.



E1B5AC



B6C4A4



93C8D2



C6BADA

Rectangle

The Rectangle color scheme consists of four colors that form a rectangle on the color wheel.



E1B5AC



CEBD9E



93C8D2



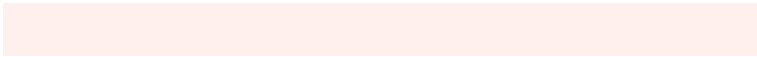
AAC1E0

Sweetspot

The Sweet Spot groups the original color and five complimentary colors.



E1B5AC



FFF0ED



E1ACD8



807775



000000



808080

Same Dimension

The Same Dimension uses a secret algorithm to generate beautiful new colors.



E1B5AC



FFC4B8



E1CFAC



706765



B01E00



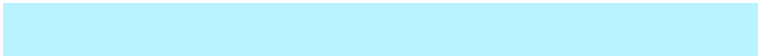
300800

Inverse Universe

The Inverse Universe completely reimagines the original color for something new.



ACD8E1



B8F3FF



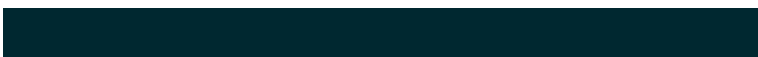
ACBEE1



656E70



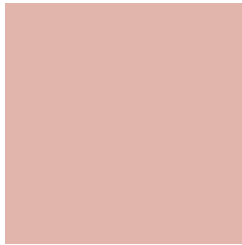
0092B0



002830

Previews

White Background



This preview shows how the Hex color E1B5AC looks on a white background.

Color Contrast Check

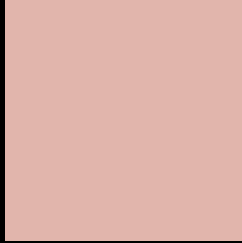
Large Text (above 18pt) WCAG AA × Fail

Any Text WCAG AA × Fail

Large Text (above 18pt) WCAG AAA × Fail

Any Text WCAG AAA × Fail

Black Background



This preview shows how the Hex color E1B5AC looks on a black background.

Color Contrast Check

Large Text (above 18pt) WCAG AA ✓ Pass

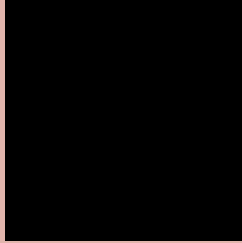
Any Text WCAG AA ✓ Pass

Large Text (above 18pt) WCAG AAA ✓ Pass

Any Text WCAG AAA ✓ Pass

If you want to check with other color combinations, try the [Color Contrast Checker](#).

Hex E1B5AC Background



This preview shows how black text looks on a background with the Hex color E1B5AC.

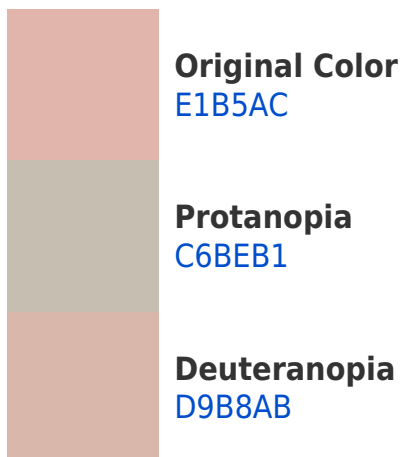


This preview shows how white text looks on a background with the Hex color E1B5AC.

Color Blindness Simulation

Color vision deficiency is a very complex topic, and I could not describe the different causes any better than Wikipedia does, so if you want to learn more, you should check out their [article about color blindness](#).

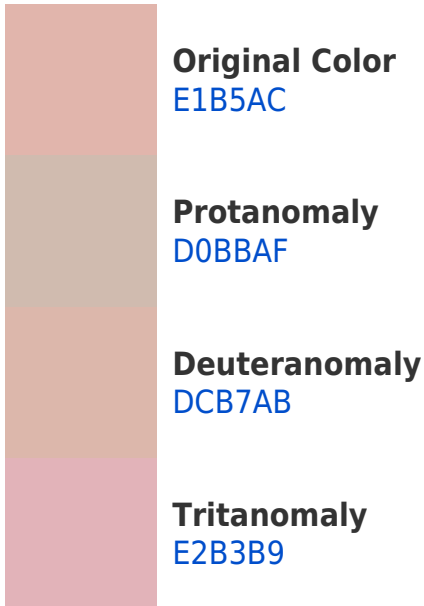
Dichromacy



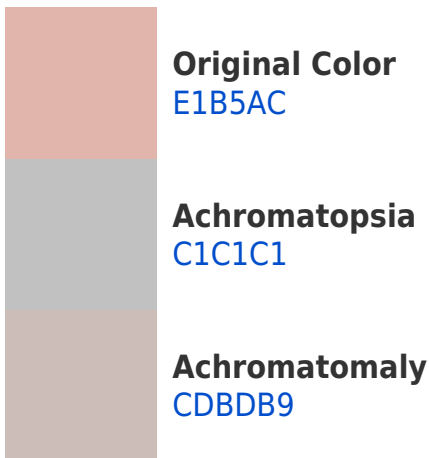


Tritanopia
E3B2C0

Trichromacy



Monochromacy



CSS Examples

Text

The CSS property to change the color of the text to Hex E1B5AC is called "color". The color property can be set on classes, ids or directly on the HTML element.

This example shows how text in the color #E1B5AC looks like.

```
.text, #text, p{  
    color:#E1B5AC  
}
```

If you want to add a text shadow in that color use the text-shadow property, you can generate a text shadow directly with our [CSS Text Shadow Generator](#).

Here you see how black text with a 4 pixel #E1B5AC colored shadow looks like.

```
.shadow{ text-shadow: 4px 4px 2px #E1B5AC }  
}
```

Border

The CSS property to change the border of an element to Hex E1B5AC is called "border". The border property can be set on classes, ids or directly on the HTML element.

This example shows the color as border, it can be applied via the CSS property "border" or "border-color".

```
.border, #border, table{ border:4px solid #E1B5AC }  
}
```

If only the border color should be changed use the property `border-color`.

```
.border{ border-color:#E1B5AC }
```

If you want to add a box shadow in that color use:

Here you see how a box with a 4 pixel #E1B5AC colored shadow looks like.

```
.boxshadow{ -moz-box-shadow:4px 4px 4px  
4px #E1B5AC; -webkit-box-shadow:4px 4px  
4px 4px #E1B5AC; box-shadow:4px 4px 4px  
4px #E1B5AC }
```

Background

The CSS property to change the background color of an element to Hex E1B5AC is called "background". The background property can be set on classes, ids or directly on the HTML element.

```
.background, #background, body{  
background:#E1B5AC }
```

If only the background color should be changed can be used:

```
.background{ background-color:#E1B5AC }
```

This example shows the color as background, it is applied via the CSS property "background".

To optimize and compress your CSS code, you can use our [online CSS compressor and optimizer](#) based on csstidy. If you want to create a linear or radial gradient as background or border, check our [CSS Gradient Generator](#).

Hey! You found this booklet interesting? Support Converting Colors with the new Membership Option!

The pro membership hides all ads, plus gives you double the colors in the color bucket, and more awesome pro features!

[Learn more, Memberships starting at \\$2.50/m!](#)

**Follow me
on Twitter!**

@ConvertingColor