

# Converting Colors

Hex(E1B7C1)

Have a look what the booklet for  
Hex(E1B7C1) contains.

|  |    |
|--|----|
| <b>Hex(E1B7C1)</b> .....                       | 3  |
| <i><b>Conversions</b></i> .....                | 4  |
| <i><b>Details</b></i> .....                    | 6  |
| <i><b>Harmonies</b></i> .....                  | 11 |
| <i><b>Previews</b></i> .....                   | 23 |
| <i><b>Color Blindness Simulation</b></i> ..... | 26 |
| <i><b>CSS Examples</b></i> .....               | 29 |

# **Color**

**Hex(E1B7C1)**

# Conversions

## Conversions Part 1

| Format      | Color                      |
|-------------|----------------------------|
| Hex         | E1B7C1                     |
| RGB         | 225, 183, 193              |
| RGB Percent | 88%, 72%, 76%              |
| CMY         | 0.1176, 0.2824, 0.2431     |
| CMYK        | 0.00, 0.19, 0.14, 0.12     |
| HSL         | 346°, 41%, 80%             |
| HSV         | 346°, 19%, 88%             |
| XYZ         | 57.6105, 53.7248, 57.7856  |
| YIQ         | 196.6980, 21.8220, 12.0140 |

# Conversions

## Conversions Part 2

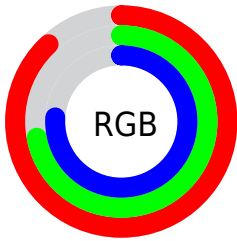
| <b>Format</b>                       | <b>Color</b>   |
|-------------------------------------|--|
| <a href="#">RYB</a>                 | <a href="#">225, 183, 193</a>                                |
| Decimal                             | <a href="#">14792641</a>                                     |
| CIELab                              | <a href="#">78.30, 16.68, 0.66</a>                           |
| CIELCh                              | <a href="#">78, 16.690, 2.273</a>                            |
| Yxy                                 | <a href="#">53.7248, 0.3406, 0.3177</a>                      |
| Android<br>(android.graphics.Color) | <a href="#">4292982721</a><br>( <a href="#">0xFFE1B7C1</a> ) |
| YUV                                 | <a href="#">196.6980, -1.8231, 24.8209</a>                   |
| Hunter-Lab                          | <a href="#">73.2972, 12.0282, 4.5653</a>                     |

# Details

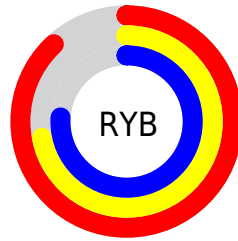
The Hex color **E1B7C1** is a light color, and the websafe version is hex **FFCCCC**. A complement of this color would be **B7E1D7**, and the grayscale version is **C5C5C5**.

A 20% lighter version of the original color is **FFEFF9**, and **A9828C** is the 20% darker color. If you saturate the color by 10%, you get **E1A1B0**, and if you desaturate by 10%, it is **E1CED2**.

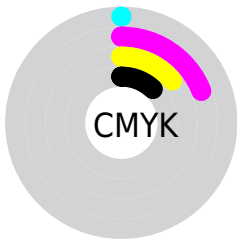
# Distribution



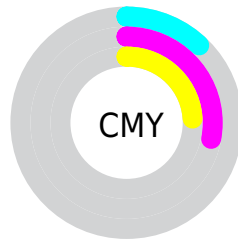
- Red (88%)
- Green (72%)
- Blue (76%)



- Red (88%)
- Yellow (72%)
- Blue (76%)



- Cyan (0%)
- Magenta (19%)
- Yellow (14%)
- Black (12%)



- Cyan (12%)
- Magenta (28%)
- Yellow (24%)

# Brightness & Saturation Gradients

These gradients show how the Hex color E1B7C1 changes by changing the brightness by 10 percent. The first figure shows a shift by +10% for each color and the second figure -10%.

Similar to the brightness gradients but the following saturation gradients show a change of the Hex color E1B7C1 by changing the saturation by 10% instead.



 E1B7C1

FFFFFF

 FFEFF9

 E1B7C1

 C59CA6

 A9828C

 8E6972

 74505A

 5B3942

 43232C

 2C0E18

 150000

 000000

 E1B7C1

 E1B7C1

 E1A1B0

 E1CED2

 E18A9F

 E1E4E3

 E1748E

 E1FBF4

 E15D7C

 E1FFFF

 E1476B

 E1305A

 E11A49

 E10338

 E10036

# Harmonies

## Analogous

The Analogous color harmony consists of three colors that are next to each other on the color wheel.



D7B9D0



E1B7C1



E2B8B2

# Triad

The Triadic color harmony groups three colors that are evenly spaced from another and form a triangle on the color wheel.



E1B7C1



BCC6A7



A1C7DD

# Complementary

The Complementary color scheme is a pair of colors which are on the opposite of each other on the color wheel.



E1B7C1



B7E1D7

# Split Complementary

Split-complementary colors differ from the complementary color scheme. The scheme consists of three colors, the original color and two neighbors of the complement color.



99CAD2



E1B7C1



AAC9B3

# Square

The Square scheme is like the rectangle color scheme, but the four colors are evenly spaced on the color wheel.



E1B7C1



CDC1A3



9DCBC2



B2C3E0

# Rectangle

The Rectangle color scheme consists of four colors that form a rectangle on the color wheel.



E1B7C1



DEBAAA



9DCBC2



9DC8DA

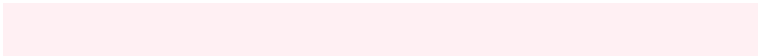


# Sweetspot

The Sweet Spot groups the original color and five complimentary colors.



E1B7C1



FFF0F3



D7B7E1



807779



000000



808080



# Same Dimension

The Same Dimension uses a secret algorithm to generate beautiful new colors.



E1B7C1



FFC7D4



E1C2B7



706568



B0002A



30000C



# Inverse Universe

The Inverse Universe completely reimagines the original color for something new.



E1B7C1



FFC7D4



B7D7E1



706568



B0002A

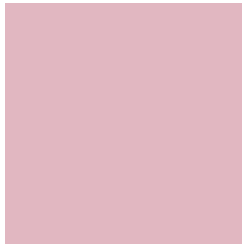


30000C



# Previews

## White Background



This preview shows how the Hex color E1B7C1 looks on a white background.

## Color Contrast Check

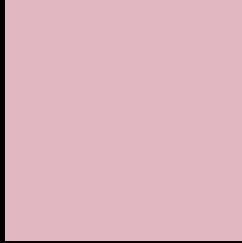
Large Text (above 18pt) WCAG AA × Fail

Any Text WCAG AA × Fail

Large Text (above 18pt) WCAG AAA × Fail

Any Text WCAG AAA × Fail

# Black Background



This preview shows how the Hex color E1B7C1 looks on a black background.

## Color Contrast Check

Large Text (above 18pt) WCAG AA ✓ Pass

Any Text WCAG AA ✓ Pass

Large Text (above 18pt) WCAG AAA ✓ Pass

Any Text WCAG AAA ✓ Pass

If you want to check with other color combinations, try the [Color Contrast Checker](#).



## Hex E1B7C1 Background



This preview shows how black text looks on a background with the Hex color E1B7C1.



This preview shows how white text looks on a background with the Hex color E1B7C1.

# Color Blindness Simulation

Color vision deficiency is a very complex topic, and I could not describe the different causes any better than Wikipedia does, so if you want to learn more, you should check out their [article about color blindness](#).

## Dichromacy



**Original Color**  
E1B7C1

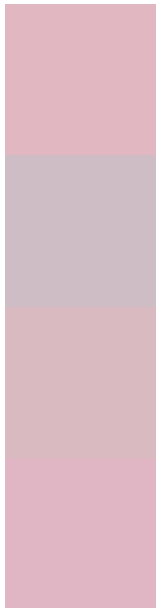
**Protanopia**  
C4C1C7

**Deuteranopia**  
D5BCC0



**Tritanopia**  
E1B6C5

# Trichromacy



**Original Color**  
E1B7C1

**Protanomaly**  
CFBDC5

**Deuteranomaly**  
D9BAC0

**Tritanomaly**  
E1B6C4

# Monochromacy



**Original Color**  
E1B7C1

**Achromatopsia**  
C5C5C5

**Achromatomaly**  
CFC0C4

# CSS Examples

## Text

The CSS property to change the color of the text to Hex E1B7C1 is called "color". The color property can be set on classes, ids or directly on the HTML element.

This example shows how text in the color #E1B7C1 looks like.

```
.text, #text, p{  
    color:#E1B7C1  
}
```

If you want to add a text shadow in that color use the text-shadow property, you can generate a text shadow directly with our [CSS Text Shadow Generator](#).

Here you see how black text with a 4 pixel #E1B7C1 colored shadow looks like.

```
.shadow{ text-shadow: 4px 4px 2px #E1B7C1
}
```

## Border

The CSS property to change the border of an element to Hex E1B7C1 is called "border". The border property can be set on classes, ids or directly on the HTML element.

This example shows the color as border, it can be applied via the CSS property "border" or "border-color".

```
.border, #border, table{ border:4px solid
#E1B7C1 }
```

If only the border color should be changed use the property `border-color`.

```
.border{ border-color:#E1B7C1 }
```

If you want to add a box shadow in that color use:

Here you see how a box with a 4 pixel #E1B7C1 colored shadow looks like.

```
.boxshadow{ -moz-box-shadow:4px 4px 4px  
4px #E1B7C1; -webkit-box-shadow:4px 4px  
4px 4px #E1B7C1; box-shadow:4px 4px 4px  
4px #E1B7C1 }
```

# Background

The CSS property to change the background color of an element to Hex E1B7C1 is called "background". The background property can be set on classes, ids or directly on the HTML element.

```
.background, #background, body{  
background:#E1B7C1 }
```

If only the background color should be changed can be used:

```
.background{ background-color:#E1B7C1 }
```

This example shows the color as background, it is applied via the CSS property "background".

To optimize and compress your CSS code, you can use our [online CSS compressor and optimizer](#) based on csstidy. If you want to create a linear or radial gradient as background or border, check our [CSS Gradient Generator](#).



Hey! You found this booklet interesting? Support Converting Colors with the new Membership Option!

The pro membership hides all ads, plus gives you double the colors in the color bucket, and more awesome pro features!

**[Learn more, Memberships starting at \\$2.50/m!](#)**

**Follow me  
on Twitter!**

@ConvertingColor