

Converting Colors

Hex(E1B896)

Have a look what the booklet for
Hex(E1B896) contains.

Hex(E1B896)	3
<i>Conversions</i>	4
<i>Details</i>	6
<i>Harmonies</i>	11
<i>Previews</i>	23
<i>Color Blindness Simulation</i>	26
<i>CSS Examples</i>	29

Color

Hex(E1B896)

Conversions

Conversions Part 1

Format	Color
Hex	E1B896
RGB	225, 184, 150
RGB Percent	88%, 72%, 59%
CMY	0.1176, 0.2784, 0.4118
CMYK	0.00, 0.18, 0.33, 0.12
HSL	27°, 56%, 74%
HSV	27°, 33%, 88%
XYZ	53.6968, 52.4905, 36.1557
YIQ	192.3830, 35.3500, -1.8820

Conversions

Conversions Part 2

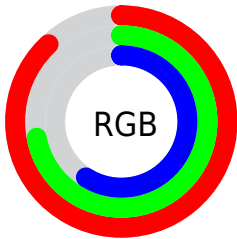
Format	Color
R _Y B	225, 212, 150
Decimal	14792854
CIE Lab	77.57, 10.01, 22.84
CIE LCh	78, 24.934, 66.339
Yxy	52.4905, 0.3772, 0.3688
Android (android.graphics.Color)	4292982934 (0xFFE1B896)
YUV	192.3830, -20.8948, 28.6051
Hunter-Lab	72.4504, 5.5078, 21.1271

Details

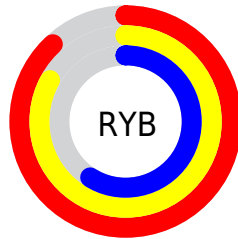
The Hex color **E1B896** is a light color, and the websafe version is hex **FFCC99**. A complement of this color would be **96BFE1**, and the grayscale version is **C1C1C1**.

A 20% lighter version of the original color is **FFF0CC**, and **A88363** is the 20% darker color. If you saturate the color by 10%, you get **E1AC7F**, and if you desaturate by 10%, it is **E1C4AD**.

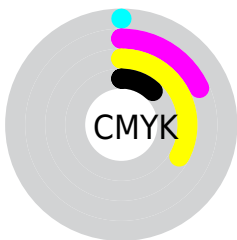
Distribution



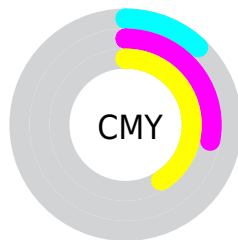
- Red (88%)
- Green (72%)
- Blue (59%)



- Red (88%)
- Yellow (83%)
- Blue (59%)



- Cyan (0%)
- Magenta (18%)
- Yellow (33%)
- Black (12%)




- Cyan (12%)
- Magenta (28%)
- Yellow (41%)

Brightness & Saturation Gradients

These gradients show how the Hex color E1B896 changes by changing the brightness by 10 percent. The first figure shows a shift by +10% for each color and the second figure -10%.

Similar to the brightness gradients but the following saturation gradients show a change of the Hex color E1B896 by changing the saturation by 10% instead.

 E1B896

 E1B896

FFFFFF

 C49D7C

 FFF0CC

 A88363

 FFFFE9

 8D6A4B

 735234

 593B1E

 402507

 281100

 000000

 E1B896

 E1B896

 E1AC7F

 E1C4AD

 E19F69

 E1D1C3

 E19353

 E1DDDA

 E1873C

 E1E9F0

 E17B26

 E1F6FF

 E16E0F

 E1FFFF

 E16600

Harmonies

Analogous

The Analogous color harmony consists of three colors that are next to each other on the color wheel.



EDB2A5



E1B896



CCC092

Triad

The Triadic color harmony groups three colors that are evenly spaced from another and form a triangle on the color wheel.



E1B896



84CDC4



CAB8E5

Complementary

The Complementary color scheme is a pair of colors which are on the opposite of each other on the color wheel.



E1B896



96BFE1

Split Complementary

Split-complementary colors differ from the complementary color scheme. The scheme consists of three colors, the original color and two neighbors of the complement color.



ABC0ED



E1B896



7ECCDA

Square

The Square scheme is like the rectangle color scheme, but the four colors are evenly spaced on the color wheel.



E1B896



98CBAC



8EC7E9



E2B2D3

Rectangle

The Rectangle color scheme consists of four colors that form a rectangle on the color wheel.



E1B896



BBC496



8EC7E9



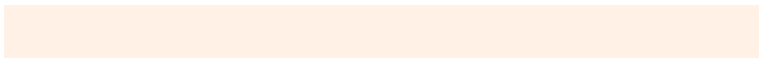
C0BBE9

Sweetspot

The Sweet Spot groups the original color and five complimentary colors.



E1B896



FFF1E6



E196BF



807770



000000



808080

Same Dimension

The Same Dimension uses a secret algorithm to generate beautiful new colors.



E1B896



FFC799



E1DD96



706A65



B05000



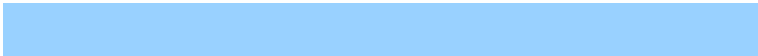
301600

Inverse Universe

The Inverse Universe completely reimagines the original color for something new.



96BFE1



99D1FF



969AE1



656B70



0060B0



001A30

Previews

White Background



This preview shows how the Hex color E1B896 looks on a white background.

Color Contrast Check

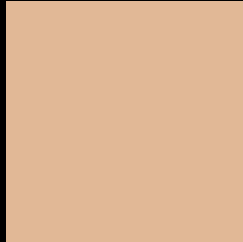
Large Text (above 18pt) WCAG AA × Fail

Any Text WCAG AA × Fail

Large Text (above 18pt) WCAG AAA × Fail

Any Text WCAG AAA × Fail

Black Background



This preview shows how the Hex color E1B896 looks on a black background.

Color Contrast Check

Large Text (above 18pt) WCAG AA ✓ Pass

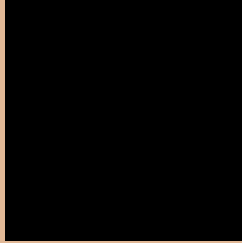
Any Text WCAG AA ✓ Pass

Large Text (above 18pt) WCAG AAA ✓ Pass

Any Text WCAG AAA ✓ Pass

If you want to check with other color combinations, try the [Color Contrast Checker](#).

Hex E1B896 Background



This preview shows how black text looks on a background with the Hex color E1B896.



This preview shows how white text looks on a background with the Hex color E1B896.

Color Blindness Simulation

Color vision deficiency is a very complex topic, and I could not describe the different causes any better than Wikipedia does, so if you want to learn more, you should check out their [article about color blindness](#).

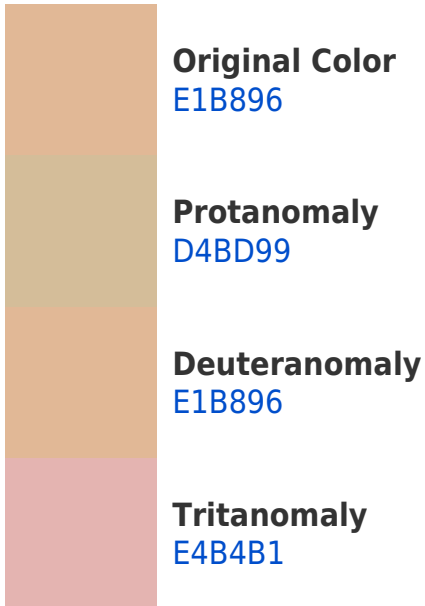
Dichromacy





Tritanopia
E6B2C0

Trichromacy



Monochromacy



CSS Examples

Text

The CSS property to change the color of the text to Hex E1B896 is called "color". The color property can be set on classes, ids or directly on the HTML element.

This example shows how text in the color #E1B896 looks like.

```
.text, #text, p{  
    color:#E1B896  
}
```

If you want to add a text shadow in that color use the text-shadow property, you can generate a text shadow directly with our [CSS Text Shadow Generator](#).

Here you see how black text with a 4 pixel #E1B896 colored shadow looks like.

```
.shadow{ text-shadow: 4px 4px 2px #E1B896
}
```

Border

The CSS property to change the border of an element to Hex E1B896 is called "border". The border property can be set on classes, ids or directly on the HTML element.

This example shows the color as border, it can be applied via the CSS property "border" or "border-color".

```
.border, #border, table{ border:4px solid
#E1B896 }
```

If only the border color should be changed use the property `border-color`.

```
.border{ border-color:#E1B896 }
```

If you want to add a box shadow in that color use:

Here you see how a box with a 4 pixel #E1B896 colored shadow looks like.

```
.boxshadow{ -moz-box-shadow:4px 4px 4px  
4px #E1B896; -webkit-box-shadow:4px 4px  
4px 4px #E1B896; box-shadow:4px 4px 4px  
4px #E1B896 }
```

Background

The CSS property to change the background color of an element to Hex E1B896 is called "background". The background property can be set on classes, ids or directly on the HTML element.

```
.background, #background, body{  
background:#E1B896 }
```

If only the background color should be changed can be used:

```
.background{ background-color:#E1B896 }
```

This example shows the color as background, it is applied via the CSS property "background".

To optimize and compress your CSS code, you can use our [online CSS compressor and optimizer](#) based on csstidy. If you want to create a linear or radial gradient as background or border, check our [CSS Gradient Generator](#).

Hey! You found this booklet interesting? Support Converting Colors with the new Membership Option!

The pro membership hides all ads, plus gives you double the colors in the color bucket, and more awesome pro features!

[Learn more, Memberships starting at \\$2.50/m!](#)

**Follow me
on Twitter!**

@ConvertingColor