

Converting Colors

Hex(E1BFBA)

Have a look what the booklet for
Hex(E1BFBA) contains.

Hex(E1BFBA)	3
<i>Conversions</i>	4
<i>Details</i>	6
<i>Harmonies</i>	11
<i>Previews</i>	23
<i>Color Blindness Simulation</i>	26
<i>CSS Examples</i>	29

Color

Hex(E1BFBA)

Conversions

Conversions Part 1

Format	Color
Hex	E1BFBA
RGB	225, 191, 186
RGB Percent	88%, 75%, 73%
CMY	0.1176, 0.2510, 0.2706
CMYK	0.00, 0.15, 0.17, 0.12
HSL	8°, 39%, 81%
HSV	8°, 17%, 88%
XYZ	58.5451, 56.8143, 54.3350
YIQ	200.5960, 21.8690, 5.6530

Conversions

Conversions Part 2

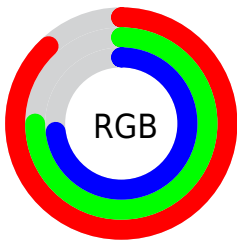
Format	Color
R _Y B	225, 192, 186
Decimal	14794682
CIE Lab	80.08, 11.31, 7.01
CIE LCh	80, 13.303, 31.800
Yxy	56.8143, 0.3450, 0.3348
Android (android.graphics.Color)	4292984762 (0xFFE1BFBA)
YUV	200.5960, -7.1958, 21.4023
Hunter-Lab	75.3753, 6.7368, 10.0229

Details

The Hex color **E1BFBA** is a light color, and the websafe version is hex **FFCCCC**. A complement of this color would be **BADCE1**, and the grayscale version is **C9C9C9**.

A 20% lighter version of the original color is **FFF7F2**, and **A98A85** is the 20% darker color. If you saturate the color by 10%, you get **E1ABA3**, and if you desaturate by 10%, it is **E1D3D1**.

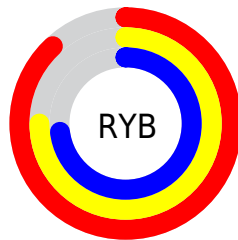
Distribution



Red (88%)

Green (75%)

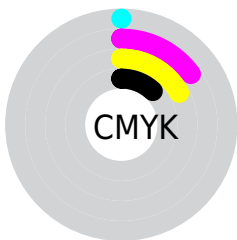
Blue (73%)



Red (88%)

Yellow (75%)

Blue (73%)

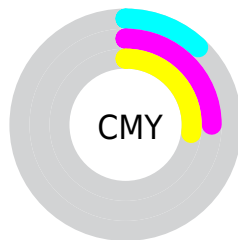


Cyan (0%)

Magenta (15%)

Yellow (17%)

Black (12%)



Cyan (12%)

Magenta (25%)

Yellow (27%)

Brightness & Saturation Gradients

These gradients show how the Hex color E1BFBA changes by changing the brightness by 10 percent. The first figure shows a shift by +10% for each color and the second figure -10%.

Similar to the brightness gradients but the following saturation gradients show a change of the Hex color E1BFBA by changing the saturation by 10% instead.

 E1BFBA

FFFFFF

 FFF7F2

 E1BFBA

 C5A49F

 A98A85

 8F706C

 755853

 5B403C

 432A27

 2C1512

 180000

 000000

 E1BFBA

 E1BFBA

 E1ABA3

 E1D3D1

 E1988D


 E1E6E7

 E18476

 E1FAFE

 E17160


 E1FFFF

 E15D49

 E14933

 E1361C

 E12206

 E11D00

Harmonies

Analogous

The Analogous color harmony consists of three colors that are next to each other on the color wheel.



E0BEC6



E1BFBA



DBC2B1

Triad

The Triadic color harmony groups three colors that are evenly spaced from another and form a triangle on the color wheel.



E1BFBA



B4CDBA



BAC7DF

Complementary

The Complementary color scheme is a pair of colors which are on the opposite of each other on the color wheel.



E1BFBA



BADCE1

Split Complementary

Split-complementary colors differ from the complementary color scheme. The scheme consists of three colors, the original color and two neighbors of the complement color.



ADCBDC



E1BFBA



AAEC7

Square

The Square scheme is like the rectangle color scheme, but the four colors are evenly spaced on the color wheel.



E1BFBA



C2CAB1



A7CDD3



CAC3DC

Rectangle

The Rectangle color scheme consists of four colors that form a rectangle on the color wheel.



E1BFBA



D4C5AE



A7CDD3



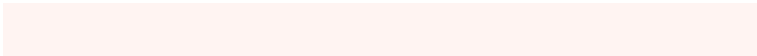
B5C9DF

Sweetspot

The Sweet Spot groups the original color and five complimentary colors.



E1BFBA



FFF4F2



E1BADC



807978



000000



808080

Same Dimension

The Same Dimension uses a secret algorithm to generate beautiful new colors.



E1BFBA



FFD0C9



E1D2BA



706665



B01700



300600

Inverse Universe

The Inverse Universe completely reimagines the original color for something new.



BADCE1



C9F8FF



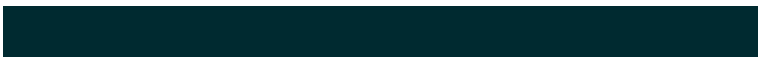
BAC9E1



656F70



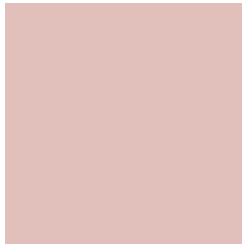
0099B0



002A30

Previews

White Background



This preview shows how the Hex color E1BFBA looks on a white background.

Color Contrast Check

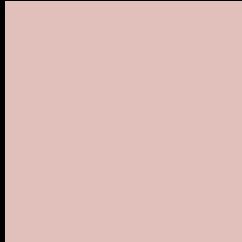
Large Text (above 18pt) WCAG AA × Fail

Any Text WCAG AA × Fail

Large Text (above 18pt) WCAG AAA × Fail

Any Text WCAG AAA × Fail

Black Background



This preview shows how the Hex color E1BFBA looks on a black background.

Color Contrast Check

Large Text (above 18pt) WCAG AA ✓ Pass

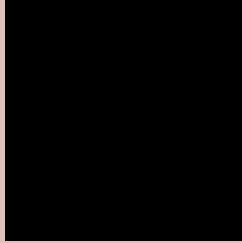
Any Text WCAG AA ✓ Pass

Large Text (above 18pt) WCAG AAA ✓ Pass

Any Text WCAG AAA ✓ Pass

If you want to check with other color combinations, try the [Color Contrast Checker](#).

Hex E1BFBA Background



This preview shows how black text looks on a background with the Hex color E1BFBA.

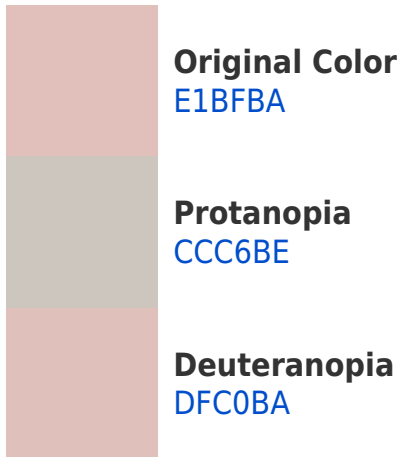


This preview shows how white text looks on a background with the Hex color E1BFBA.

Color Blindness Simulation

Color vision deficiency is a very complex topic, and I could not describe the different causes any better than Wikipedia does, so if you want to learn more, you should check out their [article about color blindness](#).

Dichromacy





Tritanopia
E3BCCB

Trichromacy



Original Color
E1BFBA

Protanomaly
D4C3BD

Deuteranomaly
E0C0BA

Tritanomaly
E2BDC5

Monochromacy



Original Color
E1BFBA

Achromatopsia
C9C9C9

Achromatomaly
D2C5C4

CSS Examples

Text

The CSS property to change the color of the text to Hex E1BFBA is called "color". The color property can be set on classes, ids or directly on the HTML element.

This example shows how text in the color #E1BFBA looks like.

```
.text, #text, p{  
    color:#E1BFBA  
}
```

If you want to add a text shadow in that color use the text-shadow property, you can generate a text shadow directly with our [CSS Text Shadow Generator](#).

Here you see how black text with a 4 pixel #E1BFBA colored shadow looks like.

```
.shadow{ text-shadow: 4px 4px 2px #E1BFBA
}
```

Border

The CSS property to change the border of an element to Hex E1BFBA is called "border". The border property can be set on classes, ids or directly on the HTML element.

This example shows the color as border, it can be applied via the CSS property "border" or "border-color".

```
.border, #border, table{ border:4px solid
#E1BFBA }
```

If only the border color should be changed use the property `border-color`.

```
.border{ border-color:#E1BFBA }
```

If you want to add a box shadow in that color use:

Here you see how a box with a 4 pixel #E1BFBA colored shadow looks like.

```
.boxshadow{ -moz-box-shadow:4px 4px 4px  
4px #E1BFBA; -webkit-box-shadow:4px 4px  
4px 4px #E1BFBA; box-shadow:4px 4px 4px  
4px #E1BFBA }
```

Background

The CSS property to change the background color of an element to Hex E1BFBA is called "background". The background property can be set on classes, ids or directly on the HTML element.

```
.background, #background, body{  
background:#E1BFBA }
```

If only the background color should be changed can be used:

```
.background{ background-color:#E1BFBA }
```

This example shows the color as background, it is applied via the CSS property "background".

To optimize and compress your CSS code, you can use our [online CSS compressor and optimizer](#) based on csstidy. If you want to create a linear or radial gradient as background or border, check our [CSS Gradient Generator](#).

Hey! You found this booklet interesting? Support Converting Colors with the new Membership Option!

The pro membership hides all ads, plus gives you double the colors in the color bucket, and more awesome pro features!

[Learn more, Memberships starting at \\$2.50/m!](#)

**Follow me
on Twitter!**

@ConvertingColor