

Converting Colors

Hex(E1C1C3)

Have a look what the booklet for
Hex(E1C1C3) contains.

| | |
|--|----|
| Hex(E1C1C3) | 3 |
| <i>Conversions</i> | 4 |
| <i>Details</i> | 6 |
| <i>Harmonies</i> | 11 |
| <i>Previews</i> | 23 |
| <i>Color Blindness Simulation</i> | 26 |
| <i>CSS Examples</i> | 29 |

Color

Hex(E1C1C3)

Conversions

Conversions Part 1

| Format | Color |
|-------------|---------------------------|
| Hex | E1C1C3 |
| RGB | 225, 193, 195 |
| RGB Percent | 88%, 76%, 76% |
| CMY | 0.1176, 0.2431, 0.2353 |
| CMYK | 0.00, 0.14, 0.13, 0.12 |
| HSL | 356°, 35%, 82% |
| HSV | 356°, 14%, 88% |
| XYZ | 59.9716, 58.0876, 59.6809 |
| YIQ | 202.7960, 18.4300, 7.4060 |

Conversions

Conversions Part 2

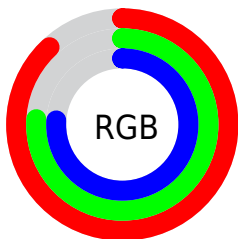
| Format | Color |
|-------------------------------------|--|
| RYB | 225, 193, 195 |
| Decimal | 14795203 |
| CIELab | 80.79, 11.66, 3.20 |
| CIElCh | 81, 12.093, 15.332 |
| Yxy | 58.0876, 0.3374, 0.3268 |
| Android (android.graphics.Color) | 4292985283 (0xFFE1C1C3) |
| YUV | 202.7960, -3.8434, 19.4729 |
| Hunter-Lab | 76.2152, 7.0800, 6.9232 |

Details

The Hex color **E1C1C3** is a light color, and the websafe version is hex **FFCCCC**. A complement of this color would be **C1E1DF**, and the grayscale version is **CBCBCB**.

A 20% lighter version of the original color is **FFF9FC**, and **A98B8D** is the 20% darker color. If you saturate the color by 10%, you get **E1ABAE**, and if you desaturate by 10%, it is **E1D8D8**.

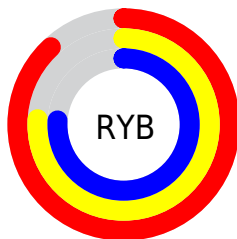
Distribution



Red (88%)

Green (76%)

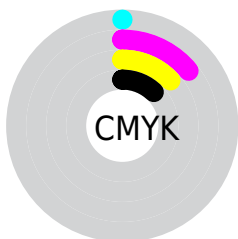
Blue (76%)



Red (88%)

Yellow (76%)

Blue (76%)

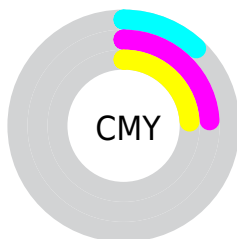


Cyan (0%)

Magenta (14%)

Yellow (13%)

Black (12%)



Cyan (12%)

Magenta (24%)

Yellow (24%)

Brightness & Saturation Gradients

These gradients show how the Hex color E1C1C3 changes by changing the brightness by 10 percent. The first figure shows a shift by +10% for each color and the second figure -10%.

Similar to the brightness gradients but the following saturation gradients show a change of the Hex color E1C1C3 by changing the saturation by 10% instead.

 E1C1C3

FFFFFF

 FFF9FC

 E1C1C3

 C5A6A8

 A98B8D

 8F7274

 75595B

 5C4244

 442C2E

 2D1719

 1A0000

 000000

 E1C1C3

 E1C1C3

 E1ABAE

 E1D8D8

 E19499

 E1EEED

 E17D84

 E1FFFF

 E1676F

 E1515A

 E13A44

 E1232F

 E10D1A

 E1000E

Harmonies

Analogous

The Analogous color harmony consists of three colors that are next to each other on the color wheel.



DCC1CF



E1C1C3



DFC3B9

Triad

The Triadic color harmony groups three colors that are evenly spaced from another and form a triangle on the color wheel.



E1C1C3



BFCDB8



B7CBDE

Complementary

The Complementary color scheme is a pair of colors which are on the opposite of each other on the color wheel.



E1C1C3



C1E1DF

Split Complementary

Split-complementary colors differ from the complementary color scheme. The scheme consists of three colors, the original color and two neighbors of the complement color.



AECED8



E1C1C3



B3CFC2

Square

The Square scheme is like the rectangle color scheme, but the four colors are evenly spaced on the color wheel.



E1C1C3



CCCAB3



ADCFCE



C4C8DE

Rectangle

The Rectangle color scheme consists of four colors that form a rectangle on the color wheel.



E1C1C3



DBC5B4



ADCFCE



B3CCDD

Sweetspot

The Sweet Spot groups the original color and five complimentary colors.



E1C1C3



FFF5F5



DFC1E1



80797A



000000



808080

Same Dimension

The Same Dimension uses a secret algorithm to generate beautiful new colors.



E1C1C3



FFD4D6



E1CFC1



706566



B0000B



300003

Inverse Universe

The Inverse Universe completely reimagines the original color for something new.



E1C1C3



FFD4D6



C1D3E1



706566



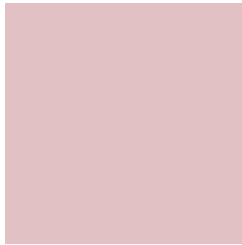
B0000B



300003

Previews

White Background



This preview shows how the Hex color E1C1C3 looks on a white background.

Color Contrast Check

Large Text (above 18pt) WCAG AA × Fail

Any Text WCAG AA × Fail

Large Text (above 18pt) WCAG AAA × Fail

Any Text WCAG AAA × Fail

Black Background



This preview shows how the Hex color E1C1C3 looks on a black background.

Color Contrast Check

Large Text (above 18pt) WCAG AA ✓ Pass

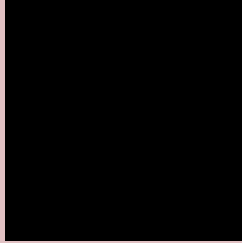
Any Text WCAG AA ✓ Pass

Large Text (above 18pt) WCAG AAA ✓ Pass

Any Text WCAG AAA ✓ Pass

If you want to check with other color combinations, try the [Color Contrast Checker](#).

Hex E1C1C3 Background



This preview shows how black text looks on a background with the Hex color E1C1C3.

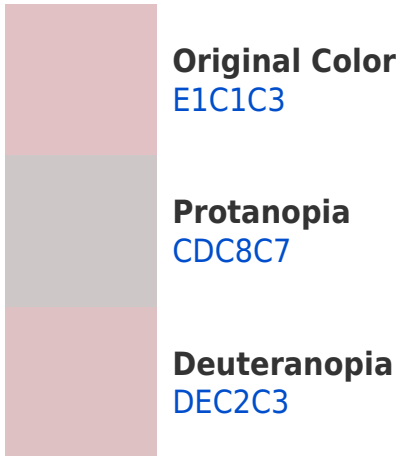


This preview shows how white text looks on a background with the Hex color E1C1C3.

Color Blindness Simulation

Color vision deficiency is a very complex topic, and I could not describe the different causes any better than Wikipedia does, so if you want to learn more, you should check out their [article about color blindness](#).

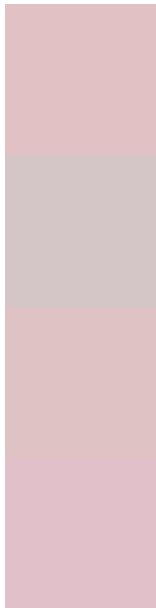
Dichromacy





Tritanopia
E2BFCE

Trichromacy



Original Color
E1C1C3

Protanomaly
D4C5C6

Deuteranomaly
DFC2C3

Tritanomaly
E2C0CA

Monochromacy



Original Color
E1C1C3

Achromatopsia
CBCBCB

Achromatomaly
D3C7C8

CSS Examples

Text

The CSS property to change the color of the text to Hex E1C1C3 is called "color". The color property can be set on classes, ids or directly on the HTML element.

This example shows how text in the color #E1C1C3 looks like.

```
.text, #text, p{  
    color:#E1C1C3  
}
```

If you want to add a text shadow in that color use the text-shadow property, you can generate a text shadow directly with our [CSS Text Shadow Generator](#).

Here you see how black text with a 4 pixel #E1C1C3 colored shadow looks like.

```
.shadow{ text-shadow: 4px 4px 2px #E1C1C3
}
```

Border

The CSS property to change the border of an element to Hex E1C1C3 is called "border". The border property can be set on classes, ids or directly on the HTML element.

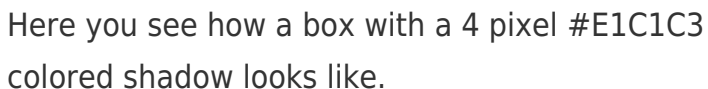
This example shows the color as border, it can be applied via the CSS property "border" or "border-color".

```
.border, #border, table{ border:4px solid
#E1C1C3 }
```

If only the border color should be changed use the property `border-color`.

```
.border{ border-color:#E1C1C3 }
```

If you want to add a box shadow in that color use:



Here you see how a box with a 4 pixel #E1C1C3 colored shadow looks like.

```
.boxshadow{ -moz-box-shadow:4px 4px 4px  
4px #E1C1C3; -webkit-box-shadow:4px 4px  
4px 4px #E1C1C3; box-shadow:4px 4px 4px  
4px #E1C1C3 }
```

Background

The CSS property to change the background color of an element to Hex E1C1C3 is called "background". The background property can be set on classes, ids or directly on the HTML element.

```
.background, #background, body{  
background:#E1C1C3 }
```

If only the background color should be changed can be used:

```
.background{ background-color:#E1C1C3 }
```

This example shows the color as background, it is applied via the CSS property "background".

To optimize and compress your CSS code, you can use our [online CSS compressor and optimizer](#) based on csstidy. If you want to create a linear or radial gradient as background or border, check our [CSS Gradient Generator](#).

Hey! You found this booklet interesting? Support Converting Colors with the new Membership Option!

The pro membership hides all ads, plus gives you double the colors in the color bucket, and more awesome pro features!

[Learn more, Memberships starting at \\$2.50/m!](#)

**Follow me
on Twitter!**

@ConvertingColor