

# Converting Colors

Hex(E1C1C7)

Have a look what the booklet for  
Hex(E1C1C7) contains.

<b>Hex(E1C1C7)</b> .....	3
<i><b>Conversions</b></i> .....	4
<i><b>Details</b></i> .....	6
<i><b>Harmonies</b></i> .....	11
<i><b>Previews</b></i> .....	23
<i><b>Color Blindness Simulation</b></i> .....	26
<i><b>CSS Examples</b></i> .....	29

# **Color**

**Hex(E1C1C7)**

# Conversions

## Conversions Part 1

Format	Color
Hex	E1C1C7
RGB	225, 193, 199
RGB Percent	88%, 76%, 78%
CMY	0.1176, 0.2431, 0.2196
CMYK	0.00, 0.14, 0.12, 0.12
HSL	349°, 35%, 82%
HSV	349°, 14%, 88%
XYZ	60.4301, 58.2710, 62.0952
YIQ	203.2520, 17.1460, 8.6500

# Conversions

## Conversions Part 2

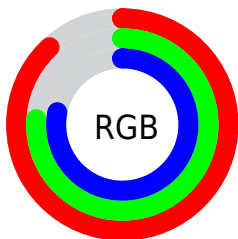
<b>Format</b>	<b>Color</b>
R <sub>Y</sub> B	225, 193, 199
Decimal	14795207
CIE Lab	80.89, 12.31, 1.20
CIE LCh	81, 12.372, 5.543
Yxy	58.2710, 0.3342, 0.3223
Android (android.graphics.Color)	4292985287 (0xFFE1C1C7)
YUV	203.2520, -2.0962, 19.0730
Hunter-Lab	76.3354, 7.7205, 5.2052

# Details

The Hex color **E1C1C7** is a light color, and the websafe version is hex **FFCCCC**. A complement of this color would be **C1E1DB**, and the grayscale version is **CBCBCB**.

A 20% lighter version of the original color is **FFFAFF**, and **A98B91** is the 20% darker color. If you saturate the color by 10%, you get **E1ABB5**, and if you desaturate by 10%, it is **E1D8D9**.

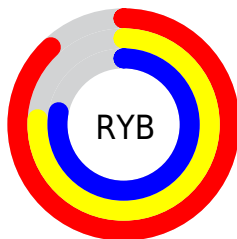
# Distribution



Red (88%)

Green (76%)

Blue (78%)



Red (88%)

Yellow (76%)

Blue (78%)

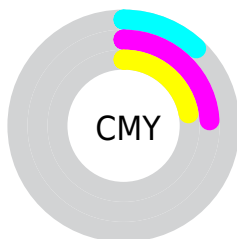


Cyan (0%)

Magenta (14%)

Yellow (12%)

Black (12%)



Cyan (12%)

Magenta (24%)

Yellow (22%)

# Brightness & Saturation Gradients

These gradients show how the Hex color E1C1C7 changes by changing the brightness by 10 percent. The first figure shows a shift by +10% for each color and the second figure -10%.

Similar to the brightness gradients but the following saturation gradients show a change of the Hex color E1C1C7 by changing the saturation by 10% instead.



 E1C1C7

FFFFFF

 FFFAFF

 E1C1C7

 C5A6AC

 A98B91

 8F7278

 75595F

 5C4247

 442B31

 2D171C

 1B0001

 000000

 E1C1C7

 E1C1C7

 E1ABB5

 E1D8D9

 E194A2

 E1EEEE

 E17D90

 E1FFFE

 E1677E

 E1FFFF

 E1516C

 E13A59

 E12347

 E10D35

 E1002A

# Harmonies

## Analogous

The Analogous color harmony consists of three colors that are next to each other on the color wheel.



DAC2D3



E1C1C7



E1C2BC

# Triad

The Triadic color harmony groups three colors that are evenly spaced from another and form a triangle on the color wheel.



E1C1C7



C3CCB6



B3CDDD

# Complementary

The Complementary color scheme is a pair of colors which are on the opposite of each other on the color wheel.



E1C1C7



C1E1DB

# Split Complementary

Split-complementary colors differ from the complementary color scheme. The scheme consists of three colors, the original color and two neighbors of the complement color.



ACCFD6



E1C1C7



B6CFBF

# Square

The Square scheme is like the rectangle color scheme, but the four colors are evenly spaced on the color wheel.



E1C1C7



D0C9B2



AED0CB



BFC9E0

# Rectangle

The Rectangle color scheme consists of four colors that form a rectangle on the color wheel.



E1C1C7



DEC4B6



AED0CB



B0CEDB

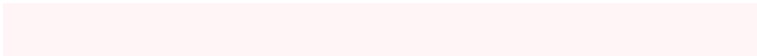


# Sweetspot

The Sweet Spot groups the original color and five complimentary colors.



E1C1C7



FFF5F7



DBC1E1



80797A



000000



808080



# Same Dimension

The Same Dimension uses a secret algorithm to generate beautiful new colors.



E1C1C7



FFD4DC



E1CBC1



706567



B00021



300009



# Inverse Universe

The Inverse Universe completely reimagines the original color for something new.



E1C1C7



FFD4DC



C1D7E1



706567



B00021

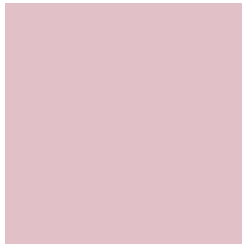


300009



# Previews

## White Background



This preview shows how the Hex color E1C1C7 looks on a white background.

## Color Contrast Check

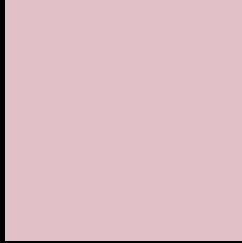
Large Text (above 18pt) WCAG AA × Fail

Any Text WCAG AA × Fail

Large Text (above 18pt) WCAG AAA × Fail

Any Text WCAG AAA × Fail

# Black Background



This preview shows how the Hex color E1C1C7 looks on a black background.

## Color Contrast Check

Large Text (above 18pt) WCAG AA ✓ Pass

Any Text WCAG AA ✓ Pass

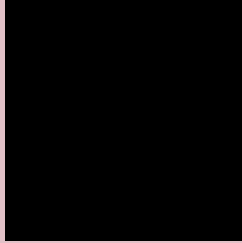
Large Text (above 18pt) WCAG AAA ✓ Pass

Any Text WCAG AAA ✓ Pass

If you want to check with other color combinations, try the [Color Contrast Checker](#).



## Hex E1C1C7 Background



This preview shows how black text looks on a background with the Hex color E1C1C7.



This preview shows how white text looks on a background with the Hex color E1C1C7.

# Color Blindness Simulation

Color vision deficiency is a very complex topic, and I could not describe the different causes any better than Wikipedia does, so if you want to learn more, you should check out their [article about color blindness](#).

## Dichromacy



**Original Color**  
E1C1C7

**Protanopia**  
CCC8CB

**Deuteranopia**  
DDC2C7



# Trichromacy



**Original Color**  
E1C1C7

**Protanomaly**  
D4C5CA

**Deuteranomaly**  
DEC2C7

**Tritanomaly**  
E2C0CC

# Monochromacy



**Original Color**  
E1C1C7

**Achromatopsia**  
CBCBCB

**Achromatomaly**  
D3C7CA

# CSS Examples

## Text

The CSS property to change the color of the text to Hex E1C1C7 is called "color". The color property can be set on classes, ids or directly on the HTML element.

This example shows how text in the color #E1C1C7 looks like.

```
.text, #text, p{  
    color:#E1C1C7  
}
```

If you want to add a text shadow in that color use the text-shadow property, you can generate a text shadow directly with our [CSS Text Shadow Generator](#).

Here you see how black text with a 4 pixel #E1C1C7 colored shadow looks like.

```
.shadow{ text-shadow: 4px 4px 2px #E1C1C7
}
```

## Border

The CSS property to change the border of an element to Hex E1C1C7 is called "border". The border property can be set on classes, ids or directly on the HTML element.

This example shows the color as border, it can be applied via the CSS property "border" or "border-color".

```
.border, #border, table{ border:4px solid
#E1C1C7 }
```

If only the border color should be changed use the property `border-color`.

```
.border{ border-color:#E1C1C7 }
```

If you want to add a box shadow in that color use:

Here you see how a box with a 4 pixel #E1C1C7 colored shadow looks like.

```
.boxshadow{ -moz-box-shadow:4px 4px 4px  
4px #E1C1C7; -webkit-box-shadow:4px 4px  
4px 4px #E1C1C7; box-shadow:4px 4px 4px  
4px #E1C1C7 }
```

# Background

The CSS property to change the background color of an element to Hex E1C1C7 is called "background". The background property can be set on classes, ids or directly on the HTML element.

```
.background, #background, body{  
background:#E1C1C7 }
```

If only the background color should be changed can be used:

```
.background{ background-color:#E1C1C7 }
```

This example shows the color as background, it is applied via the CSS property "background".

To optimize and compress your CSS code, you can use our [online CSS compressor and optimizer](#) based on csstidy. If you want to create a linear or radial gradient as background or border, check our [CSS Gradient Generator](#).



Hey! You found this booklet interesting? Support Converting Colors with the new Membership Option!

The pro membership hides all ads, plus gives you double the colors in the color bucket, and more awesome pro features!

**[Learn more, Memberships starting at \\$2.50/m!](#)**

**Follow me  
on Twitter!**

@ConvertingColor