

Converting Colors

Hex(E1C2C1)

Have a look what the booklet for
Hex(E1C2C1) contains.

Hex(E1C2C1)	3
<i>Conversions</i>	4
<i>Details</i>	6
<i>Harmonies</i>	11
<i>Previews</i>	23
<i>Color Blindness Simulation</i>	26
<i>CSS Examples</i>	29

Color

Hex(E1C2C1)

Conversions

Conversions Part 1

Format	Color
Hex	E1C2C1
RGB	225, 194, 193
RGB Percent	88%, 76%, 76%
CMY	0.1176, 0.2392, 0.2431
CMYK	0.00, 0.14, 0.14, 0.12
HSL	2°, 35%, 82%
HSV	2°, 14%, 88%
XYZ	59.9688, 58.4414, 58.5717
YIQ	203.1550, 18.7970, 6.2610

Conversions

Conversions Part 2

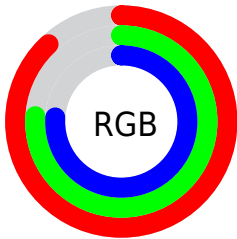
Format	Color
R _Y B	225, 194, 193
Decimal	14795457
CIE Lab	80.98, 10.81, 4.56
CIE LCh	81, 11.732, 22.852
Yxy	58.4414, 0.3388, 0.3302
Android (android.graphics.Color)	4292985537 (0xFFE1C2C1)
YUV	203.1550, -5.0064, 19.1581
Hunter-Lab	76.4470, 6.2420, 8.0864

Details

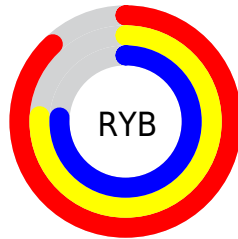
The Hex color **E1C2C1** is a light color, and the websafe version is hex **FFCCCC**. A complement of this color would be **C1E0E1**, and the grayscale version is **CBCBCB**.

A 20% lighter version of the original color is **FFFBF9**, and **A98C8C** is the 20% darker color. If you saturate the color by 10%, you get **E1ACAB**, and if you desaturate by 10%, it is **E1D8D8**.

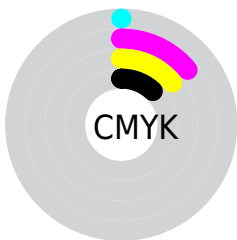
Distribution



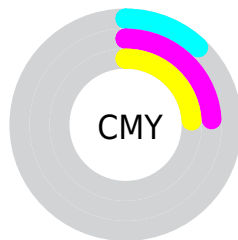
- Red (88%)
- Green (76%)
- Blue (76%)



- Red (88%)
- Yellow (76%)
- Blue (76%)



- Cyan (0%)
- Magenta (14%)
- Yellow (14%)
- Black (12%)



- Cyan (12%)
- Magenta (24%)
- Yellow (24%)

Brightness & Saturation Gradients

These gradients show how the Hex color E1C2C1 changes by changing the brightness by 10 percent. The first figure shows a shift by +10% for each color and the second figure -10%.

Similar to the brightness gradients but the following saturation gradients show a change of the Hex color E1C2C1 by changing the saturation by 10% instead.

 E1C2C1

FFFFFF

 FFFBF9

 E1C2C1

 C5A7A6

 A98C8C

 8F7372

 755A5A

 5C4342

 442C2C

 2D1818

 1A0000

 000000

 E1C2C1

 E1C2C1

 E1ACAB

 E1D8D8

 E19694

 E1EEEE

 E1817D


 E1FFFF

 E16B67

 E15551

 E13F3A

 E12923

 E1140D

 E10700

Harmonies

Analogous

The Analogous color harmony consists of three colors that are next to each other on the color wheel.



DEC2CC



E1C2C1



DEC4B8

Triad

The Triadic color harmony groups three colors that are evenly spaced from another and form a triangle on the color wheel.



E1C2C1



BCCEBC



BBCBDF

Complementary

The Complementary color scheme is a pair of colors which are on the opposite of each other on the color wheel.



E1C2C1



C1E0E1

Split Complementary

Split-complementary colors differ from the complementary color scheme. The scheme consists of three colors, the original color and two neighbors of the complement color.



B1CEDA



E1C2C1



B2D0C6

Square

The Square scheme is like the rectangle color scheme, but the four colors are evenly spaced on the color wheel.



E1C2C1



C9CBB5



AED0D1



C8C7DD

Rectangle

The Rectangle color scheme consists of four colors that form a rectangle on the color wheel.



E1C2C1



D8C6B4



AED0D1



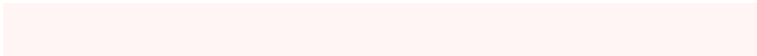
B7CCDE

Sweetspot

The Sweet Spot groups the original color and five complimentary colors.



E1C2C1



FFF5F5



E1C1E0



807979



000000



808080

Same Dimension

The Same Dimension uses a secret algorithm to generate beautiful new colors.



E1C2C1



FFD5D4



E1D2C1



706565



B00500



300200

Inverse Universe

The Inverse Universe completely reimagines the original color for something new.



C1E0E1



D4FEFF



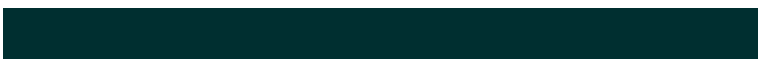
C1D0E1



657070



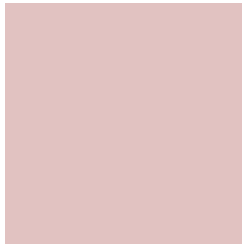
00AAB0



002F30

Previews

White Background



This preview shows how the Hex color E1C2C1 looks on a white background.

Color Contrast Check

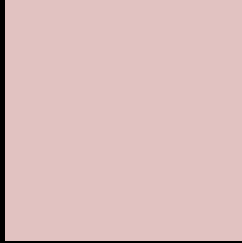
Large Text (above 18pt) WCAG AA × Fail

Any Text WCAG AA × Fail

Large Text (above 18pt) WCAG AAA × Fail

Any Text WCAG AAA × Fail

Black Background



This preview shows how the Hex color E1C2C1 looks on a black background.

Color Contrast Check

Large Text (above 18pt) WCAG AA ✓ Pass

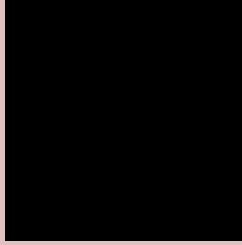
Any Text WCAG AA ✓ Pass

Large Text (above 18pt) WCAG AAA ✓ Pass

Any Text WCAG AAA ✓ Pass

If you want to check with other color combinations, try the [Color Contrast Checker](#).

Hex E1C2C1 Background



This preview shows how black text looks on a background with the Hex color E1C2C1.

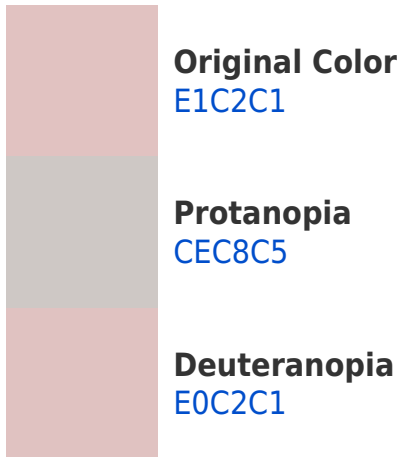


This preview shows how white text looks on a background with the Hex color E1C2C1.

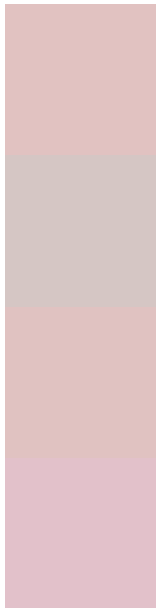
Color Blindness Simulation

Color vision deficiency is a very complex topic, and I could not describe the different causes any better than Wikipedia does, so if you want to learn more, you should check out their [article about color blindness](#).

Dichromacy



Trichromacy



Original Color
E1C2C1

Protanomaly
D5C6C4

Deuteranomaly
E0C2C1

Tritanomaly
E2C1CA

Monochromacy



Original Color
E1C2C1

Achromatopsia
CBCBCB

Achromatomaly
D3C8C7

CSS Examples

Text

The CSS property to change the color of the text to Hex E1C2C1 is called "color". The color property can be set on classes, ids or directly on the HTML element.

This example shows how text in the color #E1C2C1 looks like.

```
.text, #text, p{  
    color:#E1C2C1  
}
```

If you want to add a text shadow in that color use the text-shadow property, you can generate a text shadow directly with our [CSS Text Shadow Generator](#).

Here you see how black text with a 4 pixel #E1C2C1 colored shadow looks like.

```
.shadow{ text-shadow: 4px 4px 2px #E1C2C1
}
```

Border

The CSS property to change the border of an element to Hex E1C2C1 is called "border". The border property can be set on classes, ids or directly on the HTML element.

This example shows the color as border, it can be applied via the CSS property "border" or "border-color".

```
.border, #border, table{ border:4px solid
#E1C2C1 }
```

If only the border color should be changed use the property `border-color`.

```
.border{ border-color:#E1C2C1 }
```

If you want to add a box shadow in that color use:

Here you see how a box with a 4 pixel #E1C2C1 colored shadow looks like.

```
.boxshadow{ -moz-box-shadow:4px 4px 4px  
4px #E1C2C1; -webkit-box-shadow:4px 4px  
4px 4px #E1C2C1; box-shadow:4px 4px 4px  
4px #E1C2C1 }
```

Background

The CSS property to change the background color of an element to Hex E1C2C1 is called "background". The background property can be set on classes, ids or directly on the HTML element.

```
.background, #background, body{  
background:#E1C2C1 }
```

If only the background color should be changed can be used:

```
.background{ background-color:#E1C2C1 }
```

This example shows the color as background, it is applied via the CSS property "background".

To optimize and compress your CSS code, you can use our [online CSS compressor and optimizer](#) based on csstidy. If you want to create a linear or radial gradient as background or border, check our [CSS Gradient Generator](#).

Hey! You found this booklet interesting? Support Converting Colors with the new Membership Option!

The pro membership hides all ads, plus gives you double the colors in the color bucket, and more awesome pro features!

[Learn more, Memberships starting at \\$2.50/m!](#)

**Follow me
on Twitter!**

@ConvertingColor