

Converting Colors

Hex(E1C4BE)

Have a look what the booklet for
Hex(E1C4BE) contains.

Hex(E1C4BE)	3
<i>Conversions</i>	4
<i>Details</i>	6
<i>Harmonies</i>	11
<i>Previews</i>	23
<i>Color Blindness Simulation</i>	26
<i>CSS Examples</i>	29

Color

Hex(E1C4BE)

Conversions

Conversions Part 1

Format	Color
Hex	E1C4BE
RGB	225, 196, 190
RGB Percent	88%, 77%, 75%
CMY	0.1176, 0.2314, 0.2549
CMYK	0.00, 0.13, 0.16, 0.12
HSL	10°, 37%, 81%
HSV	10°, 16%, 88%
XYZ	60.0855, 59.2051, 56.9761
YIQ	203.9870, 19.2100, 4.2820

Conversions

Conversions Part 2

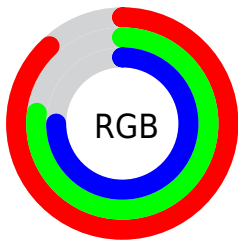
Format	Color
R_{YB}	225, 197, 190
Decimal	14795966
CIE _{Lab}	81.40, 9.28, 6.77
CIE _{LCh}	81, 11.485, 36.132
Yxy	59.2051, 0.3409, 0.3359
Android (android.graphics.Color)	4292986046 (0xFFE1C4BE)
YUV	203.9870, -6.8956, 18.4284
Hunter-Lab	76.9449, 4.7355, 9.9584

Details

The Hex color **E1C4BE** is a light color, and the websafe version is hex **FFCCCC**. A complement of this color would be **BEDBE1**, and the grayscale version is **CCCCCC**.

A 20% lighter version of the original color is **FFFDF6**, and **A98E89** is the 20% darker color. If you saturate the color by 10%, you get **E1B1A8**, and if you desaturate by 10%, it is **E1D7D5**.

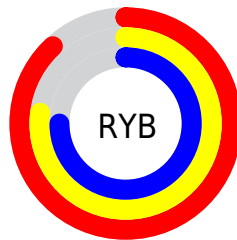
Distribution



Red (88%)

Green (77%)

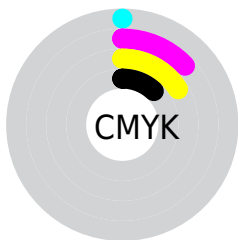
Blue (75%)



Red (88%)

Yellow (77%)

Blue (75%)

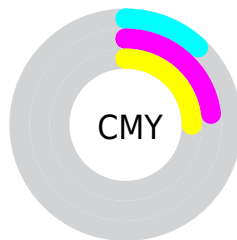


Cyan (0%)

Magenta (13%)

Yellow (16%)

Black (12%)



Cyan (12%)

Magenta (23%)

Yellow (25%)

Brightness & Saturation Gradients

These gradients show how the Hex color E1C4BE changes by changing the brightness by 10 percent. The first figure shows a shift by +10% for each color and the second figure -10%.

Similar to the brightness gradients but the following saturation gradients show a change of the Hex color E1C4BE by changing the saturation by 10% instead.

 E1C4BE

 E1C4BE

FFFFFF

 C5A9A3

 FFFDF6

 A98E89

 8F756F

 755C57

 5C4440

 442E2A

 2D1915

 190000

 000000

 E1C4BE

 E1C4BE

 E1B1A8

 E1D7D5

 E19F91

 E1E9EB

 E18C7B

 E1FCFF


 E17964

 E1FFFF

 E1674E

 E15437

 E14221

 E12F0A

 E12700

Harmonies

Analogous

The Analogous color harmony consists of three colors that are next to each other on the color wheel.



E1C3C8



E1C4BE



DBC7B7

Triad

The Triadic color harmony groups three colors that are evenly spaced from another and form a triangle on the color wheel.



E1C4BE



B9D0C1



C2CADF

Complementary

The Complementary color scheme is a pair of colors which are on the opposite of each other on the color wheel.



E1C4BE



BEDBE1

Split Complementary

Split-complementary colors differ from the complementary color scheme. The scheme consists of three colors, the original color and two neighbors of the complement color.



B6CEDE



E1C4BE



B1D1CC

Square

The Square scheme is like the rectangle color scheme, but the four colors are evenly spaced on the color wheel.



E1C4BE



C5CEB9



B0D0D6



CFC7DC

Rectangle

The Rectangle color scheme consists of four colors that form a rectangle on the color wheel.



E1C4BE



D5C9B5



B0D0D6



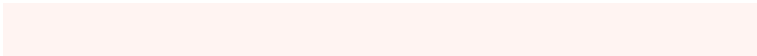
BDCCDF

Sweetspot

The Sweet Spot groups the original color and five complimentary colors.



E1C4BE



FFF4F2



E1BEDB



807978



000000



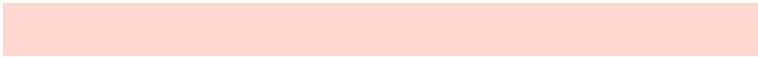
808080

Same Dimension

The Same Dimension uses a secret algorithm to generate beautiful new colors.



E1C4BE



FFD7CF



E1D5BE



706765



B01E00



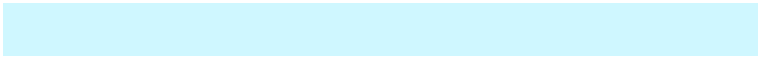
300800

Inverse Universe

The Inverse Universe completely reimagines the original color for something new.



BEDBE1



CFF7FF



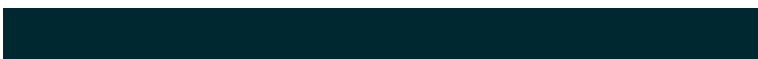
BECAE1



656E70



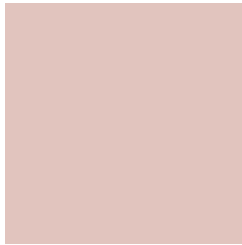
0092B0



002830

Previews

White Background



This preview shows how the Hex color E1C4BE looks on a white background.

Color Contrast Check

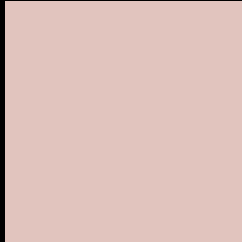
Large Text (above 18pt) WCAG AA × Fail

Any Text WCAG AA × Fail

Large Text (above 18pt) WCAG AAA × Fail

Any Text WCAG AAA × Fail

Black Background



This preview shows how the Hex color E1C4BE looks on a black background.

Color Contrast Check

Large Text (above 18pt) WCAG AA ✓ Pass

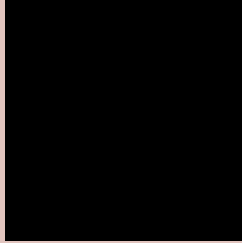
Any Text WCAG AA ✓ Pass

Large Text (above 18pt) WCAG AAA ✓ Pass

Any Text WCAG AAA ✓ Pass

If you want to check with other color combinations, try the [Color Contrast Checker](#).

Hex E1C4BE Background



This preview shows how black text looks on a background with the Hex color E1C4BE.

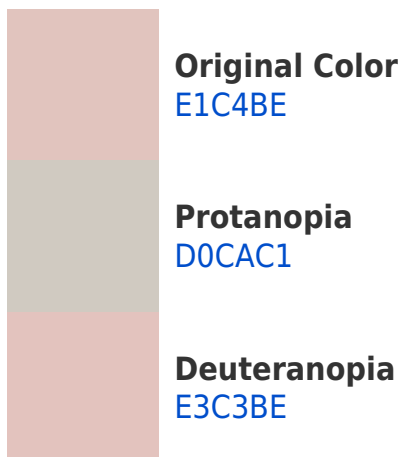


This preview shows how white text looks on a background with the Hex color E1C4BE.

Color Blindness Simulation

Color vision deficiency is a very complex topic, and I could not describe the different causes any better than Wikipedia does, so if you want to learn more, you should check out their [article about color blindness](#).

Dichromacy



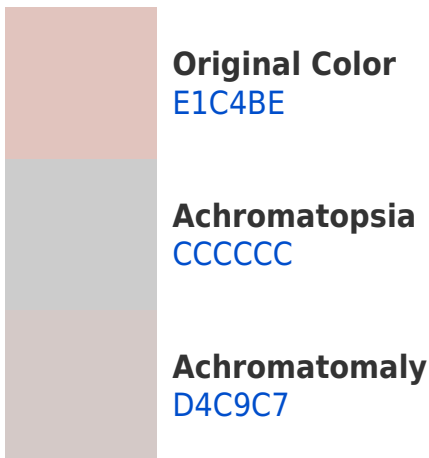


Tritanopia
E3C1D0

Trichromacy



Monochromacy



CSS Examples

Text

The CSS property to change the color of the text to Hex E1C4BE is called "color". The color property can be set on classes, ids or directly on the HTML element.

This example shows how text in the color #E1C4BE looks like.

```
.text, #text, p{  
  color:#E1C4BE  
}
```

If you want to add a text shadow in that color use the text-shadow property, you can generate a text shadow directly with our [CSS Text Shadow Generator](#).

Here you see how black text with a 4 pixel #E1C4BE colored shadow looks like.

```
.shadow{ text-shadow: 4px 4px 2px #E1C4BE
}
```

Border

The CSS property to change the border of an element to Hex E1C4BE is called "border". The border property can be set on classes, ids or directly on the HTML element.

This example shows the color as border, it can be applied via the CSS property "border" or "border-color".

```
.border, #border, table{ border:4px solid
#E1C4BE }
```

If only the border color should be changed use the property `border-color`.

```
.border{ border-color:#E1C4BE }
```

If you want to add a box shadow in that color use:

Here you see how a box with a 4 pixel #E1C4BE colored shadow looks like.

```
.boxshadow{ -moz-box-shadow:4px 4px 4px  
4px #E1C4BE; -webkit-box-shadow:4px 4px  
4px 4px #E1C4BE; box-shadow:4px 4px 4px  
4px #E1C4BE }
```

Background

The CSS property to change the background color of an element to Hex E1C4BE is called "background". The background property can be set on classes, ids or directly on the HTML element.

```
.background, #background, body{  
background:#E1C4BE }
```

If only the background color should be changed can be used:

```
.background{ background-color:#E1C4BE }
```

This example shows the color as background, it is applied via the CSS property "background".

To optimize and compress your CSS code, you can use our [online CSS compressor and optimizer](#) based on csstidy. If you want to create a linear or radial gradient as background or border, check our [CSS Gradient Generator](#).

Hey! You found this booklet interesting? Support Converting Colors with the new Membership Option!

The pro membership hides all ads, plus gives you double the colors in the color bucket, and more awesome pro features!

[Learn more, Memberships starting at \\$2.50/m!](#)

**Follow me
on Twitter!**

@ConvertingColor