

Converting Colors

Hex(E1C5C3)

Have a look what the booklet for
Hex(E1C5C3) contains.

Hex(E1C5C3)	3
<i>Conversions</i>	4
<i>Details</i>	6
<i>Harmonies</i>	11
<i>Previews</i>	23
<i>Color Blindness Simulation</i>	26
<i>CSS Examples</i>	29

Color

Hex(E1C5C3)

Conversions

Conversions Part 1

Format	Color
Hex	E1C5C3
RGB	225, 197, 195
RGB Percent	88%, 77%, 76%
CMY	0.1176, 0.2275, 0.2353
CMYK	0.00, 0.12, 0.13, 0.12
HSL	4°, 33%, 82%
HSV	4°, 13%, 88%
XYZ	60.8679, 59.8802, 59.9797
YIQ	205.1440, 17.3300, 5.3140

Conversions

Conversions Part 2

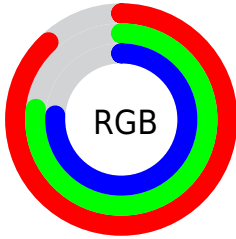
Format	Color
R _Y B	225, 197, 195
Decimal	14796227
CIE Lab	81.77, 9.54, 4.62
CIE LCh	82, 10.602, 25.858
Yxy	59.8802, 0.3368, 0.3313
Android (android.graphics.Color)	4292986307 (0xFFE1C5C3)
YUV	205.1440, -5.0010, 17.4137
Hunter-Lab	77.3823, 4.9868, 8.2114

Details

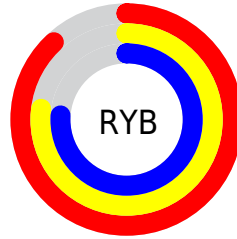
The Hex color **E1C5C3** is a light color, and the websafe version is hex **FFCCCC**. A complement of this color would be **C3DFE1**, and the grayscale version is **CDCDCD**.

A 20% lighter version of the original color is **FFFEFC**, and **A98F8D** is the 20% darker color. If you saturate the color by 10%, you get **E1B0AC**, and if you desaturate by 10%, it is **E1DADA**.

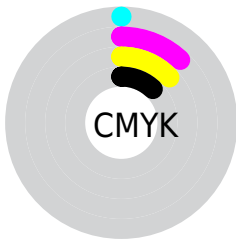
Distribution



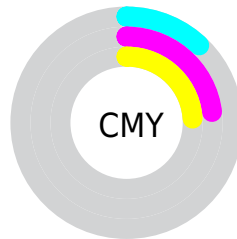
- Red (88%)
- Green (77%)
- Blue (76%)



- Red (88%)
- Yellow (77%)
- Blue (76%)



- Cyan (0%)
- Magenta (12%)
- Yellow (13%)
- Black (12%)



- Cyan (12%)
- Magenta (23%)
- Yellow (24%)

Brightness & Saturation Gradients

These gradients show how the Hex color E1C5C3 changes by changing the brightness by 10 percent. The first figure shows a shift by +10% for each color and the second figure -10%.

Similar to the brightness gradients but the following saturation gradients show a change of the Hex color E1C5C3 by changing the saturation by 10% instead.

 E1C5C3

 E1C5C3

FFFFFF

 C5AAA8

 FFFEFC

 A98F8D

 8F7674

 755D5B

 5C4544

 442F2E

 2D1A19

 1A0000

 000000

 E1C5C3

 E1C5C3

 E1B0AC

 E1DADA

 E19B96

 E1EFFF0

 E1867F


 E1FFFF

 E17169

 E15C53

 E1473C

 E13225

 E11D0F

 E10F00

Harmonies

Analogous

The Analogous color harmony consists of three colors that are next to each other on the color wheel.



DFC5CD



E1C5C3



DDC7BB

Triad

The Triadic color harmony groups three colors that are evenly spaced from another and form a triangle on the color wheel.



E1C5C3



BFD0C0



BFCDDF

Complementary

The Complementary color scheme is a pair of colors which are on the opposite of each other on the color wheel.



E1C5C3



C3DFE1

Split Complementary

Split-complementary colors differ from the complementary color scheme. The scheme consists of three colors, the original color and two neighbors of the complement color.



B6CFDB



E1C5C3



B6D1C9

Square

The Square scheme is like the rectangle color scheme, but the four colors are evenly spaced on the color wheel.



E1C5C3



CACDB9



B3D1D3



CCC9DD

Rectangle

The Rectangle color scheme consists of four colors that form a rectangle on the color wheel.



E1C5C3



D8C9B8



B3D1D3



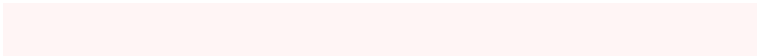
BCCEDE

Sweetspot

The Sweet Spot groups the original color and five complimentary colors.



E1C5C3



FFF5F5



E1C3DF



807A79



000000



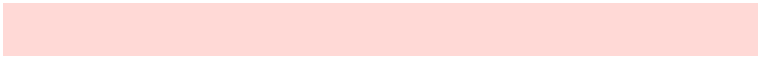
808080

Same Dimension

The Same Dimension uses a secret algorithm to generate beautiful new colors.



E1C5C3



FFD9D6



E1D4C3



706665



B00C00



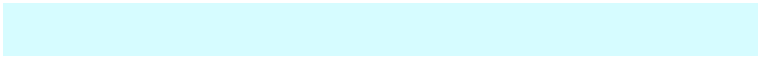
300300

Inverse Universe

The Inverse Universe completely reimagines the original color for something new.



C3DFE1



D6FCFF



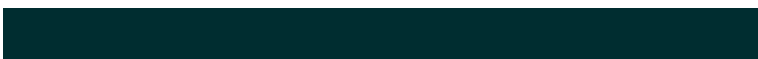
C3D0E1



656F70



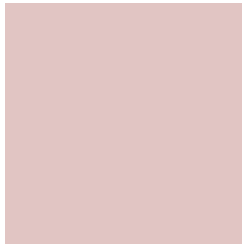
00A4B0



002D30

Previews

White Background



This preview shows how the Hex color E1C5C3 looks on a white background.

Color Contrast Check

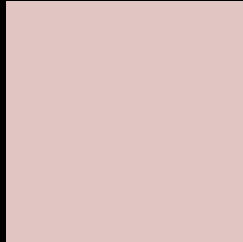
Large Text (above 18pt) WCAG AA × Fail

Any Text WCAG AA × Fail

Large Text (above 18pt) WCAG AAA × Fail

Any Text WCAG AAA × Fail

Black Background



This preview shows how the Hex color E1C5C3 looks on a black background.

Color Contrast Check

Large Text (above 18pt) WCAG AA ✓ Pass

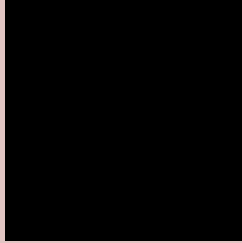
Any Text WCAG AA ✓ Pass

Large Text (above 18pt) WCAG AAA ✓ Pass

Any Text WCAG AAA ✓ Pass

If you want to check with other color combinations, try the [Color Contrast Checker](#).

Hex E1C5C3 Background



This preview shows how black text looks on a background with the Hex color E1C5C3.

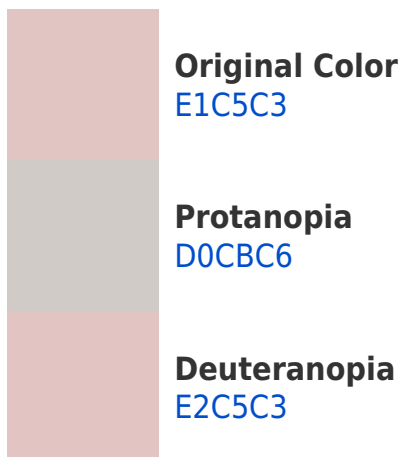


This preview shows how white text looks on a background with the Hex color E1C5C3.

Color Blindness Simulation

Color vision deficiency is a very complex topic, and I could not describe the different causes any better than Wikipedia does, so if you want to learn more, you should check out their [article about color blindness](#).

Dichromacy





Tritanopia
E3C3D2

Trichromacy



Original Color
E1C5C3

Protanomaly
D6C9C5

Deuteranomaly
E2C5C3

Tritanomaly
E2C4CD

Monochromacy



Original Color
E1C5C3

Achromatopsia
CDCDCD

Achromatomaly
D4CAC9

CSS Examples

Text

The CSS property to change the color of the text to Hex E1C5C3 is called "color". The color property can be set on classes, ids or directly on the HTML element.

This example shows how text in the color #E1C5C3 looks like.

```
.text, #text, p{  
    color:#E1C5C3  
}
```

If you want to add a text shadow in that color use the text-shadow property, you can generate a text shadow directly with our [CSS Text Shadow Generator](#).

Here you see how black text with a 4 pixel #E1C5C3 colored shadow looks like.

```
.shadow{ text-shadow: 4px 4px 2px #E1C5C3  
}
```

Border

The CSS property to change the border of an element to Hex E1C5C3 is called "border". The border property can be set on classes, ids or directly on the HTML element.

This example shows the color as border, it can be applied via the CSS property "border" or "border-color".

```
.border, #border, table{ border:4px solid  
#E1C5C3 }
```

If only the border color should be changed use the property `border-color`.

```
.border{ border-color:#E1C5C3 }
```

If you want to add a box shadow in that color use:

Here you see how a box with a 4 pixel #E1C5C3 colored shadow looks like.

```
.boxshadow{ -moz-box-shadow:4px 4px 4px  
4px #E1C5C3; -webkit-box-shadow:4px 4px  
4px 4px #E1C5C3; box-shadow:4px 4px 4px  
4px #E1C5C3 }
```

Background

The CSS property to change the background color of an element to Hex E1C5C3 is called "background". The background property can be set on classes, ids or directly on the HTML element.

```
.background, #background, body{  
background:#E1C5C3 }
```

If only the background color should be changed can be used:

```
.background{ background-color:#E1C5C3 }
```

This example shows the color as background, it is applied via the CSS property "background".

To optimize and compress your CSS code, you can use our [online CSS compressor and optimizer](#) based on csstidy. If you want to create a linear or radial gradient as background or border, check our [CSS Gradient Generator](#).

Hey! You found this booklet interesting? Support Converting Colors with the new Membership Option!

The pro membership hides all ads, plus gives you double the colors in the color bucket, and more awesome pro features!

[Learn more, Memberships starting at \\$2.50/m!](#)

**Follow me
on Twitter!**

@ConvertingColor