

Converting Colors

Hex(E1D0D3)

Have a look what the booklet for
Hex(E1D0D3) contains.

Hex(E1D0D3)	3
<i>Conversions</i>	4
<i>Details</i>	6
<i>Harmonies</i>	11
<i>Previews</i>	23
<i>Color Blindness Simulation</i>	26
<i>CSS Examples</i>	29

Color

Hex(E1D0D3)

Conversions

Conversions Part 1

Format	Color
Hex	E1D0D3
RGB	225, 208, 211
RGB Percent	88%, 82%, 83%
CMY	0.1176, 0.1843, 0.1725
CMYK	0.00, 0.08, 0.06, 0.12
HSL	349°, 22%, 85%
HSV	349°, 8%, 88%
XYZ	65.3651, 65.8225, 70.8879
YIQ	213.4250, 9.1690, 4.5370

Conversions

Conversions Part 2

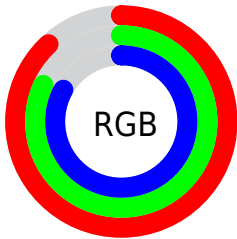
Format	Color
R _Y B	225, 208, 211
Decimal	14799059
CIE Lab	84.91, 6.40, 0.63
CIE LCh	85, 6.432, 5.663
Yxy	65.8225, 0.3235, 0.3257
Android (android.graphics.Color)	4292989139 (0xFFE1D0D3)
YUV	213.4250, -1.1955, 10.1513
Hunter-Lab	81.1310, 1.8333, 4.9873

Details

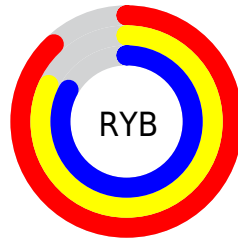
The Hex color **E1D0D3** is a light color, and the websafe version is hex **CCCCCC**. A complement of this color would be **D0E1DE**, and the grayscale version is **D5D5D5**.

A 20% lighter version of the original color is **FFFFFF**, and **AA9A9D** is the 20% darker color. If you saturate the color by 10%, you get **E1BAC0**, and if you desaturate by 10%, it is **E1E7E6**.

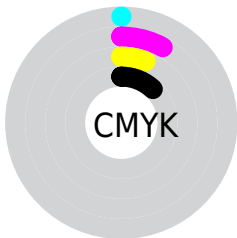
Distribution



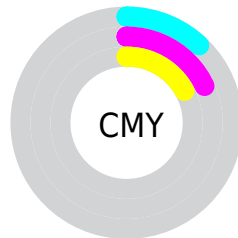
- Red (88%)
- Green (82%)
- Blue (83%)



- Red (88%)
- Yellow (82%)
- Blue (83%)



- Cyan (0%)
- Magenta (8%)
- Yellow (6%)
- Black (12%)



- Cyan (12%)
- Magenta (18%)
- Yellow (17%)

Brightness & Saturation Gradients

These gradients show how the Hex color E1D0D3 changes by changing the brightness by 10 percent. The first figure shows a shift by +10% for each color and the second figure -10%.

Similar to the brightness gradients but the following saturation gradients show a change of the Hex color E1D0D3 by changing the saturation by 10% instead.

 E1D0D3

FFFFFF

 E1D0D3

 C5B4B7

 AA9A9D

 8F8082

 766769

 5D4F51

 45383A

 2F2225

 1B0D10

 000000

 E1D0D3

 E1D0D3

 E1BAC0

 E1E7E6

 E1A3AE

 E1FDF8

 E18C9B


 E1FFFF

 E17689

 E15F76

 E14964

 E13351

 E11C3F

 E1052C

Harmonies

Analogous

The Analogous color harmony consists of three colors that are next to each other on the color wheel.



DDD1D9



E1D0D3



E1D1CD

Triad

The Triadic color harmony groups three colors that are evenly spaced from another and form a triangle on the color wheel.



E1D0D3



D1D6CA



C9D6DF

Complementary

The Complementary color scheme is a pair of colors which are on the opposite of each other on the color wheel.



E1D0D3



D0E1DE

Split Complementary

Split-complementary colors differ from the complementary color scheme. The scheme consists of three colors, the original color and two neighbors of the complement color.



C6D7DB



E1D0D3



CAD7CF

Square

The Square scheme is like the rectangle color scheme, but the four colors are evenly spaced on the color wheel.



E1D0D3



D8D4C8



C6D8D5



CFD4E0

Rectangle

The Rectangle color scheme consists of four colors that form a rectangle on the color wheel.



E1D0D3



DFD1CA



C6D8D5



C7D7DE

Sweetspot

The Sweet Spot groups the original color and five complimentary colors.



E1D0D3



FFFAFB



DED0E1



807D7D



000000



808080

Same Dimension

The Same Dimension uses a secret algorithm to generate beautiful new colors.



E1D0D3



FFE8EC



E1D5D0



706567



B0001F



300009

Inverse Universe

The Inverse Universe completely reimagines the original color for something new.



E1D0D3



FFE8EC



D0DCE1



706567



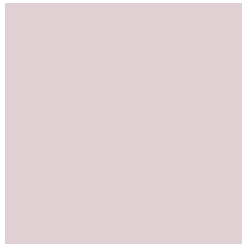
B0001F



300009

Previews

White Background



This preview shows how the Hex color E1D0D3 looks on a white background.

Color Contrast Check

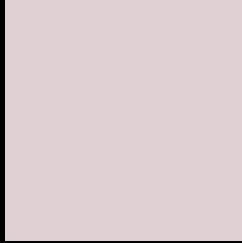
Large Text (above 18pt) WCAG AA × Fail

Any Text WCAG AA × Fail

Large Text (above 18pt) WCAG AAA × Fail

Any Text WCAG AAA × Fail

Black Background



This preview shows how the Hex color E1D0D3 looks on a black background.

Color Contrast Check

Large Text (above 18pt) WCAG AA ✓ Pass

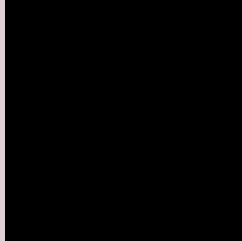
Any Text WCAG AA ✓ Pass

Large Text (above 18pt) WCAG AAA ✓ Pass

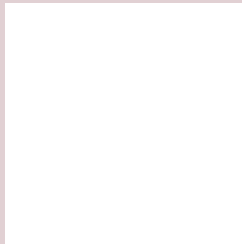
Any Text WCAG AAA ✓ Pass

If you want to check with other color combinations, try the [Color Contrast Checker](#).

Hex E1D0D3 Background



This preview shows how black text looks on a background with the Hex color E1D0D3.

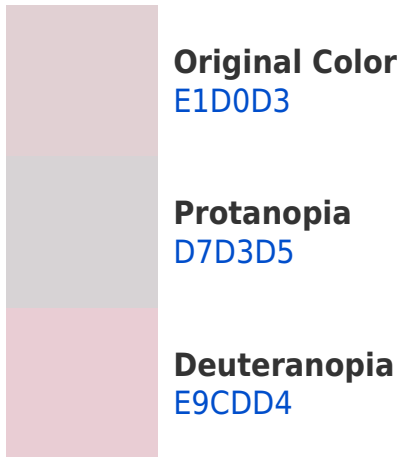


This preview shows how white text looks on a background with the Hex color E1D0D3.

Color Blindness Simulation

Color vision deficiency is a very complex topic, and I could not describe the different causes any better than Wikipedia does, so if you want to learn more, you should check out their [article about color blindness](#).

Dichromacy



Trichromacy



Original Color

E1D0D3

Protanomaly

DBD2D4

Deuteranomaly

E6CED4

Tritanomaly

E2CFDA

Monochromacy



Original Color

E1D0D3

Achromatopsia

D5D5D5

Achromatomaly

D9D3D4

CSS Examples

Text

The CSS property to change the color of the text to Hex E1D0D3 is called "color". The color property can be set on classes, ids or directly on the HTML element.

This example shows how text in the color #E1D0D3 looks like.

```
.text, #text, p{  
    color:#E1D0D3  
}
```

If you want to add a text shadow in that color use the text-shadow property, you can generate a text shadow directly with our [CSS Text Shadow Generator](#).

Here you see how black text with a 4 pixel #E1D0D3 colored shadow looks like.

```
.shadow{ text-shadow: 4px 4px 2px #E1D0D3
}
```

Border

The CSS property to change the border of an element to Hex E1D0D3 is called "border". The border property can be set on classes, ids or directly on the HTML element.

This example shows the color as border, it can be applied via the CSS property "border" or "border-color".

```
.border, #border, table{ border:4px solid
#E1D0D3 }
```

If only the border color should be changed use the property `border-color`.

```
.border{ border-color:#E1D0D3 }
```

If you want to add a box shadow in that color use:

Here you see how a box with a 4 pixel #E1D0D3 colored shadow looks like.

```
.boxshadow{ -moz-box-shadow:4px 4px 4px  
4px #E1D0D3; -webkit-box-shadow:4px 4px  
4px 4px #E1D0D3; box-shadow:4px 4px 4px  
4px #E1D0D3 }
```

Background

The CSS property to change the background color of an element to Hex E1D0D3 is called "background". The background property can be set on classes, ids or directly on the HTML element.

```
.background, #background, body{  
background:#E1D0D3 }
```

If only the background color should be changed can be used:

```
.background{ background-color:#E1D0D3 }
```

This example shows the color as background, it is applied via the CSS property "background".

To optimize and compress your CSS code, you can use our [online CSS compressor and optimizer](#) based on csstidy. If you want to create a linear or radial gradient as background or border, check our [CSS Gradient Generator](#).

Hey! You found this booklet interesting? Support Converting Colors with the new Membership Option!

The pro membership hides all ads, plus gives you double the colors in the color bucket, and more awesome pro features!

[Learn more, Memberships starting at \\$2.50/m!](#)

**Follow me
on Twitter!**

@ConvertingColor