

# Converting Colors

Hex(E24474)

Have a look what the booklet for  
Hex(E24474) contains.

<b>Hex(E24474)</b> .....	3
<b><i>Conversions</i></b> .....	4
<b><i>Details</i></b> .....	6
<b><i>Harmonies</i></b> .....	11
<b><i>Previews</i></b> .....	23
<b><i>Color Blindness Simulation</i></b> .....	26
<b><i>CSS Examples</i></b> .....	29

**Color**

**Hex(E24474)**

# Conversions

## Conversions Part 1

Format	Color
Hex	E24474
RGB	226, 68, 116
RGB Percent	89%, 27%, 45%
CMY	0.1137, 0.7333, 0.5451
CMYK	0.00, 0.70, 0.49, 0.11
HSL	342°, 73%, 58%
HSV	342°, 70%, 89%
XYZ	36.5835, 21.5639, 18.7571
YIQ	120.7140, 78.7600, 48.4240

# Conversions

## Conversions Part 2

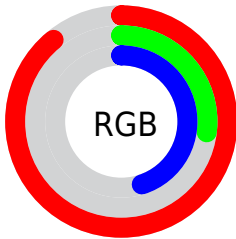
<b>Format</b>	<b>Color</b>
<b>R<sub>YB</sub></b>	226, 68, 116
Decimal	14828660
CIE <sub>Lab</sub>	53.56, 63.87, 8.65
CIE <sub>LCh</sub>	54, 64.458, 7.712
Yxy	21.5639, 0.4757, 0.2804
Android (android.graphics.Color)	4293018740 (0xFFE24474)
YUV	120.7140, -2.3240, 92.3358
Hunter-Lab	46.4370, 59.3594, 8.5572

# Details

The Hex color **E24474** is a dark color, and the websafe version is hex **CC3366**. The color can be described as middle muted rose. A complement of this color would be **44E2B2**, and the grayscale version is **797979**.

A 20% lighter version of the original color is **FF7EA8**, and **A50044** is the 20% darker color. If you saturate the color by 10%, you get **E22D64**, and if you desaturate by 10%, it is **E25B84**.

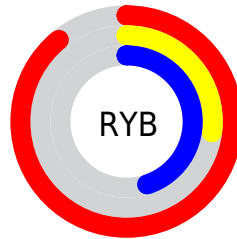
# Distribution



Red (89%)

Green (27%)

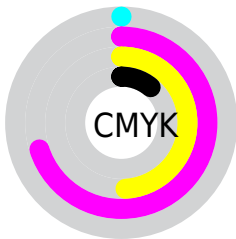
Blue (45%)



Red (89%)

Yellow (27%)

Blue (45%)

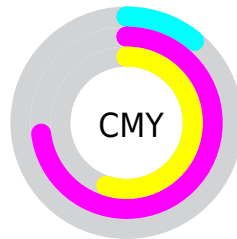


Cyan (0%)

Magenta (70%)

Yellow (49%)

Black (11%)



Cyan (11%)

Magenta (73%)

Yellow (55%)

# Brightness & Saturation Gradients

These gradients show how the Hex color E24474 changes by changing the brightness by 10 percent. The first figure shows a shift by +10% for each color and the second figure -10%.

Similar to the brightness gradients but the following saturation gradients show a change of the Hex color E24474 by changing the saturation by 10% instead.



 E24474

 E24474

FFFFFF

 C3225C

 FF7EA8

 A50044

 FF9BC3

 87002E

 FFB8DF

 69001A

 FFD5FB

 4D0002

 FFF3FF

 2F0002

 000000

 E24474

 E24474

 E22D64

 E25B84

 E21755

 E27193

 E20045

 E288A3

 E29EB3

 E2B5C3

 E2CCD2

 E2E2E2

 E2F9F2

 E2FFFF

# Harmonies

## Analogous

The Analogous color harmony consists of three colors that are next to each other on the color wheel.



CD50AB



E24474



D9543F

# Triad

The Triadic color harmony groups three colors that are evenly spaced from another and form a triangle on the color wheel.



E24474



518F1A



0091E7

# Complementary

The Complementary color scheme is a pair of colors which are on the opposite of each other on the color wheel.



E24474



44E2B2

# Split Complementary

Split-complementary colors differ from the complementary color scheme. The scheme consists of three colors, the original color and two neighbors of the complement color.



0098C3



E24474



009753

# Square

The Square scheme is like the rectangle color scheme, but the four colors are evenly spaced on the color wheel.



E24474



8D8200



00998D



0082EF

# Rectangle

The Rectangle color scheme consists of four colors that form a rectangle on the color wheel.



E24474



C7651D



00998D



0094DE



# Sweetspot

The Sweet Spot groups the original color and five complimentary colors.



E24474



FFC9DA



B044E2



806069



000000



808080



# Same Dimension

The Same Dimension uses a secret algorithm to generate beautiful new colors.



E24474



FF296A



E26144



706568



B00035



30000F



# Inverse Universe

The Inverse Universe completely reimagines the original color for something new.



E24474



FF296A



44C5E2



706568



B00035



30000F



# Previews

## White Background



This preview shows how the Hex color E24474 looks on a white background.

## Color Contrast Check

Large Text (above 18pt) WCAG AA ✓ Pass

Any Text WCAG AA ✗ Fail

Large Text (above 18pt) WCAG AAA ✗ Fail

Any Text WCAG AAA ✗ Fail

# Black Background



## Color Contrast Check

Large Text (above 18pt) WCAG AA ✓ Pass

Any Text WCAG AA ✓ Pass

Large Text (above 18pt) WCAG AAA ✓ Pass

Any Text WCAG AAA × Fail

If you want to check with other color combinations, try the [Color Contrast Checker](#).



## Hex E24474 Background



This preview shows how black text looks on a background with the Hex color E24474.

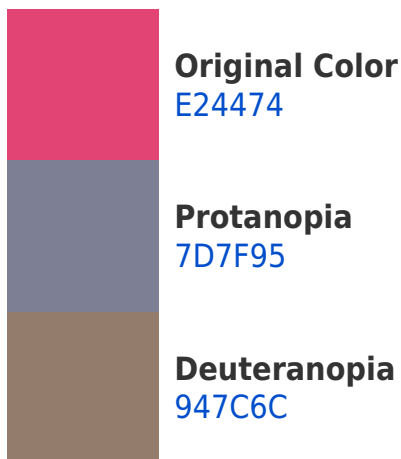


This preview shows how white text looks on a background with the Hex color E24474.

# Color Blindness Simulation

Color vision deficiency is a very complex topic, and I could not describe the different causes any better than Wikipedia does, so if you want to learn more, you should check out their [article about color blindness](#).

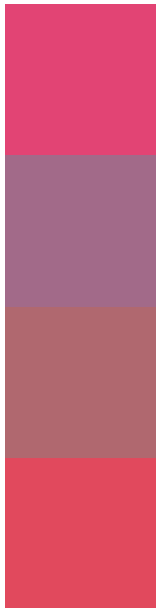
## Dichromacy





**Tritanopia**  
E04C50

# Trichromacy



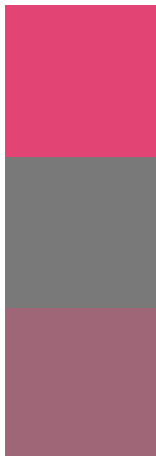
**Original Color**  
E24474

**Protanomaly**  
A26A89

**Deuteranomaly**  
B0686F

**Tritanomaly**  
E1495D

# Monochromacy



**Original Color**  
E24474

**Achromatopsia**  
797979

**Achromatomaly**  
9F6677

# CSS Examples

## Text

The CSS property to change the color of the text to Hex E24474 is called "color". The color property can be set on classes, ids or directly on the HTML element.

This example shows how text in the color #E24474 looks like.

```
.text, #text, p{  
    color:#E24474  
}
```

If you want to add a text shadow in that color use the text-shadow property, you can generate a text shadow directly with our [CSS Text Shadow Generator](#).

Here you see how black text with a 4 pixel #E24474 colored shadow looks like.

```
.shadow{ text-shadow: 4px 4px 2px #E24474
}
```

## Border

The CSS property to change the border of an element to Hex E24474 is called "border". The border property can be set on classes, ids or directly on the HTML element.

This example shows the color as border, it can be applied via the CSS property "border" or "border-color".

```
.border, #border, table{ border:4px solid
#E24474 }
```

If only the border color should be changed use the property `border-color`.

```
.border{ border-color:#E24474 }
```

If you want to add a box shadow in that color use:

Here you see how a box with a 4 pixel #E24474 colored shadow looks like.

```
.boxshadow{ -moz-box-shadow:4px 4px 4px  
4px #E24474; -webkit-box-shadow:4px 4px  
4px 4px #E24474; box-shadow:4px 4px 4px  
4px #E24474 }
```

# Background

The CSS property to change the background color of an element to Hex E24474 is called "background". The background property can be set on classes, ids or directly on the HTML element.

```
.background, #background, body{  
background:#E24474 }
```

If only the background color should be changed can be used:

```
.background{ background-color:#E24474 }
```

This example shows the color as background, it is applied via the CSS property "background".

To optimize and compress your CSS code, you can use our [online CSS compressor and optimizer](#) based on csstidy. If you want to create a linear or radial gradient as background or border, check our [CSS Gradient Generator](#).



Hey! You found this booklet interesting? Support Converting Colors with the new Membership Option!

The pro membership hides all ads, plus gives you double the colors in the color bucket, and more awesome pro features!

**[Learn more, Memberships starting at \\$2.50/m!](#)**

**Follow me  
on Twitter!**

@ConvertingColor