

Converting Colors

Hex(E2476A)

Have a look what the booklet for
Hex(E2476A) contains.

Hex(E2476A)	3
<i>Conversions</i>	4
<i>Details</i>	6
<i>Harmonies</i>	11
<i>Previews</i>	23
<i>Color Blindness Simulation</i>	26
<i>CSS Examples</i>	29

Color

Hex(E2476A)

Conversions

Conversions Part 1

Format	Color
Hex	E2476A
RGB	226, 71, 106
RGB Percent	89%, 28%, 42%
CMY	0.1137, 0.7216, 0.5843
CMYK	0.00, 0.69, 0.53, 0.11
HSL	346°, 73%, 58%
HSV	346°, 69%, 89%
XYZ	36.2188, 21.7158, 15.9183
YIQ	121.3350, 81.1450, 43.7450

Conversions

Conversions Part 2

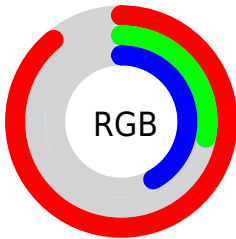
Format	Color
R_{YB}	226, 71, 106
Decimal	14829418
CIE _{Lab}	53.72, 61.96, 14.85
CIE _{LCh}	54, 63.715, 13.482
Yxy	21.7158, 0.4904, 0.2940
Android (android.graphics.Color)	4293019498 (0xFFE2476A)
YUV	121.3350, -7.5602, 91.7912
Hunter-Lab	46.6003, 57.1839, 12.3671

Details

The Hex color **E2476A** is a dark color, and the websafe version is hex **CC3366**. The color can be described as middle muted rose. A complement of this color would be **47E2BF**, and the grayscale version is **797979**.

A 20% lighter version of the original color is **FF819D**, and **A5003B** is the 20% darker color. If you saturate the color by 10%, you get **E23059**, and if you desaturate by 10%, it is **E25E7B**.

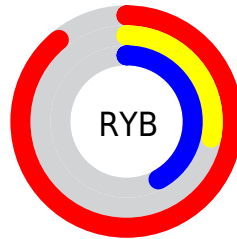
Distribution



Red (89%)

Green (28%)

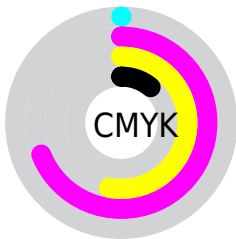
Blue (42%)



Red (89%)

Yellow (28%)

Blue (42%)

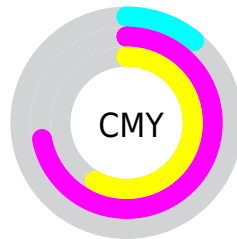


Cyan (0%)

Magenta (69%)

Yellow (53%)

Black (11%)



Cyan (11%)

Magenta (72%)

Yellow (58%)

Brightness & Saturation Gradients

These gradients show how the Hex color E2476A changes by changing the brightness by 10 percent. The first figure shows a shift by +10% for each color and the second figure -10%.

Similar to the brightness gradients but the following saturation gradients show a change of the Hex color E2476A by changing the saturation by 10% instead.

 E2476A

 E2476A

FFFFFF

 C32752

 FF819D

 A5003B

 FF9DB8

 860026

 FFBAD3

 690012

 FFD7F0

 4C0002

 FFF5FF

 2E0002

 000000

 E2476A

 E2476A

 E23059

 E25E7B

 E21A47

 E2748D

 E20336

 E28B9E

 E20033

 E2A1B0

 E2B8C1

 E2CFD3

 E2E5E4

 E2FCF6

 E2FFFF

Harmonies

Analogous

The Analogous color harmony consists of three colors that are next to each other on the color wheel.



D34DA1



E2476A



D55A36

Triad

The Triadic color harmony groups three colors that are evenly spaced from another and form a triangle on the color wheel.



E2476A



439128



008FEA

Complementary

The Complementary color scheme is a pair of colors which are on the opposite of each other on the color wheel.



E2476A



47E2BF

Split Complementary

Split-complementary colors differ from the complementary color scheme. The scheme consists of three colors, the original color and two neighbors of the complement color.



0097CB



E2476A



00985F

Square

The Square scheme is like the rectangle color scheme, but the four colors are evenly spaced on the color wheel.



E2476A



838600



009A98



2F7EEC

Rectangle

The Rectangle color scheme consists of four colors that form a rectangle on the color wheel.



E2476A



C06B14



009A98



0093E3

Sweetspot

The Sweet Spot groups the original color and five complimentary colors.



E2476A



FFC9D6



BE47E2



806067



000000



808080

Same Dimension

The Same Dimension uses a secret algorithm to generate beautiful new colors.



E2476A



FF2E5D



E27047



706568



B00028



30000B

Inverse Universe

The Inverse Universe completely reimagines the original color for something new.



E2476A



FF2E5D



47B9E2



706568



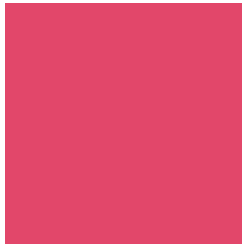
B00028



30000B

Previews

White Background



This preview shows how the Hex color E2476A looks on a white background.

Color Contrast Check

Large Text (above 18pt) WCAG AA ✓ Pass

Any Text WCAG AA × Fail

Large Text (above 18pt) WCAG AAA × Fail

Any Text WCAG AAA × Fail

Black Background



Color Contrast Check

Large Text (above 18pt) WCAG AA ✓ Pass

Any Text WCAG AA ✓ Pass

Large Text (above 18pt) WCAG AAA ✓ Pass

Any Text WCAG AAA × Fail

If you want to check with other color combinations, try the [Color Contrast Checker](#).

Hex E2476A Background



This preview shows how black text looks on a background with the Hex color E2476A.

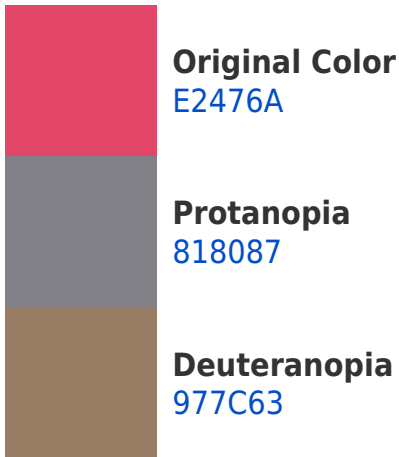


This preview shows how white text looks on a background with the Hex color E2476A.

Color Blindness Simulation

Color vision deficiency is a very complex topic, and I could not describe the different causes any better than Wikipedia does, so if you want to learn more, you should check out their [article about color blindness](#).

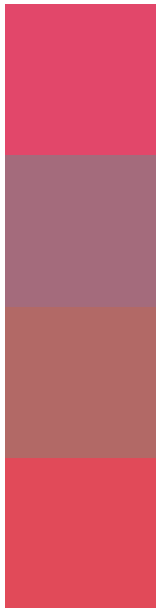
Dichromacy





Tritanopia
E14C50

Trichromacy



Original Color
E2476A

Protanomaly
A46B7C

Deuteranomaly
B26966

Tritanomaly
E14A59

Monochromacy



Original Color
E2476A

Achromatopsia
797979

Achromatomaly
9F6774

CSS Examples

Text

The CSS property to change the color of the text to Hex E2476A is called "color". The color property can be set on classes, ids or directly on the HTML element.

This example shows how text in the color #E2476A looks like.

```
.text, #text, p{  
    color:#E2476A  
}
```

If you want to add a text shadow in that color use the text-shadow property, you can generate a text shadow directly with our [CSS Text Shadow Generator](#).

Here you see how black text with a 4 pixel #E2476A colored shadow looks like.

```
.shadow{ text-shadow: 4px 4px 2px #E2476A
}
```

Border

The CSS property to change the border of an element to Hex E2476A is called "border". The border property can be set on classes, ids or directly on the HTML element.

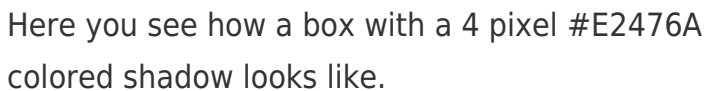
This example shows the color as border, it can be applied via the CSS property "border" or "border-color".

```
.border, #border, table{ border:4px solid
#E2476A }
```

If only the border color should be changed use the property `border-color`.

```
.border{ border-color:#E2476A }
```

If you want to add a box shadow in that color use:



Here you see how a box with a 4 pixel #E2476A colored shadow looks like.

```
.boxshadow{ -moz-box-shadow:4px 4px 4px  
4px #E2476A; -webkit-box-shadow:4px 4px  
4px 4px #E2476A; box-shadow:4px 4px 4px  
4px #E2476A }
```

Background

The CSS property to change the background color of an element to Hex E2476A is called "background". The background property can be set on classes, ids or directly on the HTML element.

```
.background, #background, body{  
background:#E2476A }
```

If only the background color should be changed can be used:

```
.background{ background-color:#E2476A }
```

This example shows the color as background, it is applied via the CSS property "background".

To optimize and compress your CSS code, you can use our [online CSS compressor and optimizer](#) based on csstidy. If you want to create a linear or radial gradient as background or border, check our [CSS Gradient Generator](#).

Hey! You found this booklet interesting? Support Converting Colors with the new Membership Option!

The pro membership hides all ads, plus gives you double the colors in the color bucket, and more awesome pro features!

[Learn more, Memberships starting at \\$2.50/m!](#)

**Follow me
on Twitter!**

@ConvertingColor