

# Converting Colors

Hex(E27F8F)

Have a look what the booklet for  
Hex(E27F8F) contains.

<b>Hex(E27F8F)</b> .....	3
<b><i>Conversions</i></b> .....	4
<b><i>Details</i></b> .....	6
<b><i>Harmonies</i></b> .....	11
<b><i>Previews</i></b> .....	23
<b><i>Color Blindness Simulation</i></b> .....	26
<b><i>CSS Examples</i></b> .....	29

# **Color**

**Hex(E27F8F)**

# Conversions

## Conversions Part 1

Format	Color
Hex	E27F8F
RGB	226, 127, 143
RGB Percent	89%, 50%, 56%
CMY	0.1137, 0.5020, 0.4392
CMYK	0.00, 0.44, 0.37, 0.11
HSL	350°, 63%, 69%
HSV	350°, 44%, 89%
XYZ	43.9113, 33.3307, 30.1057
YIQ	158.4250, 53.8680, 25.9640

# Conversions

## Conversions Part 2

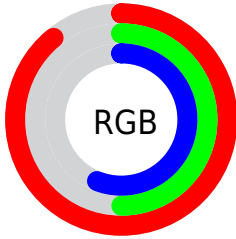
<b>Format</b>	<b>Color</b>
<b>R<sub>YB</sub></b>	226, 127, 143
Decimal	14843791
CIE <sub>Lab</sub>	64.43, 39.86, 8.37
CIE <sub>LCh</sub>	64, 40.728, 11.865
Yxy	33.3307, 0.4091, 0.3105
Android (android.graphics.Color)	4293033871 (0xFFE27F8F)
YUV	158.4250, -7.6045, 59.2633
Hunter-Lab	57.7327, 34.7343, 9.4951

# Details

The Hex color **E27F8F** is a light color, and the websafe version is hex **FF9999**. A complement of this color would be **7FE2D2**, and the grayscale version is **9E9E9E**.

A 20% lighter version of the original color is **FFB5C5**, and **A84B5D** is the 20% darker color. If you saturate the color by 10%, you get **E2687C**, and if you desaturate by 10%, it is **E296A2**.

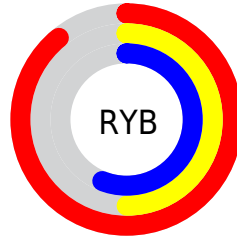
# Distribution



Red (89%)

Green (50%)

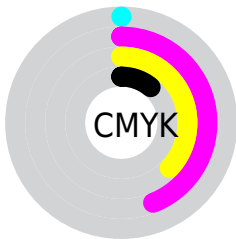
Blue (56%)



Red (89%)

Yellow (50%)

Blue (56%)

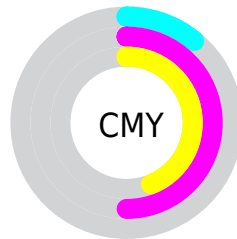


Cyan (0%)

Magenta (44%)

Yellow (37%)

Black (11%)



Cyan (11%)

Magenta (50%)

Yellow (44%)

# Brightness & Saturation Gradients

These gradients show how the Hex color E27F8F changes by changing the brightness by 10 percent. The first figure shows a shift by +10% for each color and the second figure -10%.

Similar to the brightness gradients but the following saturation gradients show a change of the Hex color E27F8F by changing the saturation by 10% instead.



 E27F8F

 E27F8F

FFFFFF

 C56575

 FF5C5

 A84B5D

 FFD2E1

 8B3245

 FFEED

 70172F

 54001B

 3B0000

 1D0001

 000000

 E27F8F

 E27F8F

 E2687C

 E296A2

 E25269

 E2ACB5

 E23B56

 E2C3C8

 E22543

 E2D9DB

 E20E30

 E2F0EE

 E20025

 E2FFFF

# Harmonies

## Analogous

The Analogous color harmony consists of three colors that are next to each other on the color wheel.



D582B4



E27F8F



DC866D

# Triad

The Triadic color harmony groups three colors that are evenly spaced from another and form a triangle on the color wheel.



E27F8F



7DA864



2EA6E1

# Complementary

The Complementary color scheme is a pair of colors which are on the opposite of each other on the color wheel.



E27F8F



7FE2D2

# Split Complementary

Split-complementary colors differ from the complementary color scheme. The scheme consists of three colors, the original color and two neighbors of the complement color.



00ADCC



E27F8F



4CAE84

# Square

The Square scheme is like the rectangle color scheme, but the four colors are evenly spaced on the color wheel.



E27F8F



A59F53



00AFAA



7D9BE3

# Rectangle

The Rectangle color scheme consists of four colors that form a rectangle on the color wheel.



E27F8F



CF8E5D



00AFAA



00A9DC



# Sweetspot

The Sweet Spot groups the original color and five complimentary colors.



E27F8F



FFDEE3



D27FE2



806B6E



000000



808080



# Same Dimension

The Same Dimension uses a secret algorithm to generate beautiful new colors.



E27F8F



FF788E



E2A07F



706567



B0001C



300008



# Inverse Universe

The Inverse Universe completely reimagines the original color for something new.



E27F8F



FF788E



7FC1E2



706567



B0001C



300008



# Previews

## White Background



This preview shows how the Hex color E27F8F looks on a white background.

## Color Contrast Check

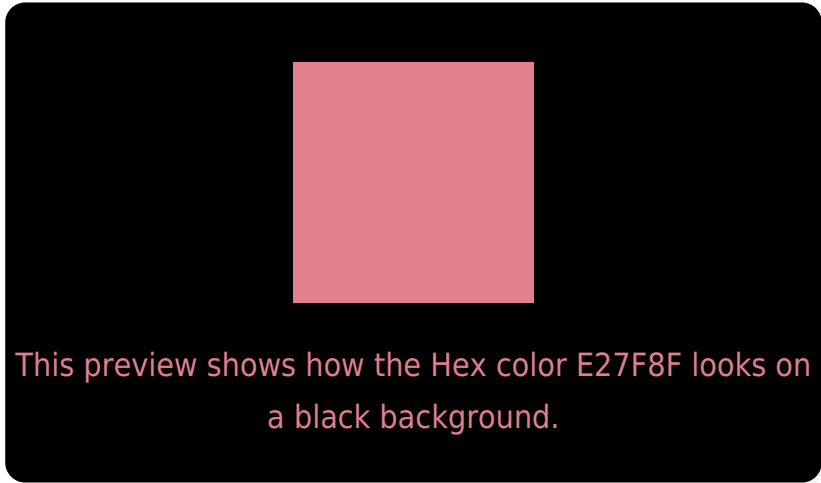
Large Text (above 18pt) WCAG AA × Fail

Any Text WCAG AA × Fail

Large Text (above 18pt) WCAG AAA × Fail

Any Text WCAG AAA × Fail

# Black Background



## Color Contrast Check

Large Text (above 18pt) WCAG AA ✓ Pass

Any Text WCAG AA ✓ Pass

Large Text (above 18pt) WCAG AAA ✓ Pass

Any Text WCAG AAA ✓ Pass

If you want to check with other color combinations, try the [Color Contrast Checker](#).



## Hex E27F8F Background



This preview shows how black text looks on a background with the Hex color E27F8F.



This preview shows how white text looks on a background with the Hex color E27F8F.

# Color Blindness Simulation

Color vision deficiency is a very complex topic, and I could not describe the different causes any better than Wikipedia does, so if you want to learn more, you should check out their [article about color blindness](#).

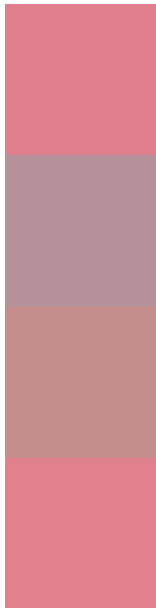
## Dichromacy





**Tritanopia**  
E28089

# Trichromacy



**Original Color**  
E27F8F

**Protanomaly**  
B79199

**Deuteranomaly**  
C38E8C

**Tritanomaly**  
E2808B

# Monochromacy



**Original Color**  
E27F8F

**Achromatopsia**  
9E9E9E

**Achromatomaly**  
B79399

# CSS Examples

## Text

The CSS property to change the color of the text to Hex E27F8F is called "color". The color property can be set on classes, ids or directly on the HTML element.

This example shows how text in the color #E27F8F looks like.

```
.text, #text, p{  
    color:#E27F8F  
}
```

If you want to add a text shadow in that color use the text-shadow property, you can generate a text shadow directly with our [CSS Text Shadow Generator](#).

Here you see how black text with a 4 pixel #E27F8F colored shadow looks like.

```
.shadow{ text-shadow: 4px 4px 2px #E27F8F
}
```

## Border

The CSS property to change the border of an element to Hex E27F8F is called "border". The border property can be set on classes, ids or directly on the HTML element.

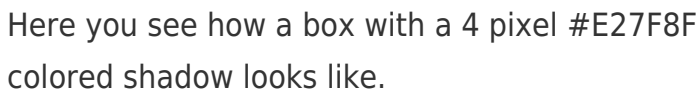
This example shows the color as border, it can be applied via the CSS property "border" or "border-color".

```
.border, #border, table{ border:4px solid
#E27F8F }
```

If only the border color should be changed use the property `border-color`.

```
.border{ border-color:#E27F8F }
```

If you want to add a box shadow in that color use:



Here you see how a box with a 4 pixel #E27F8F colored shadow looks like.

```
.boxshadow{ -moz-box-shadow:4px 4px 4px  
4px #E27F8F; -webkit-box-shadow:4px 4px  
4px 4px #E27F8F; box-shadow:4px 4px 4px  
4px #E27F8F }
```

# Background

The CSS property to change the background color of an element to Hex E27F8F is called "background". The background property can be set on classes, ids or directly on the HTML element.

```
.background, #background, body{  
background:#E27F8F }
```

If only the background color should be changed can be used:

```
.background{ background-color:#E27F8F }
```

This example shows the color as background, it is applied via the CSS property "background".

To optimize and compress your CSS code, you can use our [online CSS compressor and optimizer](#) based on csstidy. If you want to create a linear or radial gradient as background or border, check our [CSS Gradient Generator](#).



Hey! You found this booklet interesting? Support Converting Colors with the new Membership Option!

The pro membership hides all ads, plus gives you double the colors in the color bucket, and more awesome pro features!

**[Learn more, Memberships starting at \\$2.50/m!](#)**

**Follow me  
on Twitter!**

@ConvertingColor