

Converting Colors

Hex(E28EC9)

Have a look what the booklet for
Hex(E28EC9) contains.

Hex(E28EC9)	3
<i>Conversions</i>	4
<i>Details</i>	6
<i>Harmonies</i>	11
<i>Previews</i>	23
<i>Color Blindness Simulation</i>	26
<i>CSS Examples</i>	29

Color

Hex(E28EC9)

Conversions

Conversions Part 1

Format	Color
Hex	E28EC9
RGB	226, 142, 201
RGB Percent	89%, 56%, 79%
CMY	0.1137, 0.4431, 0.2118
CMYK	0.00, 0.37, 0.11, 0.11
HSL	318°, 59%, 72%
HSV	318°, 37%, 89%
XYZ	51.5796, 39.7318, 60.2088
YIQ	173.8420, 31.1250, 36.1570

Conversions

Conversions Part 2

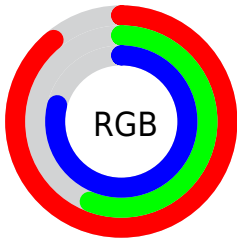
Format	Color
R _Y B	226, 142, 201
Decimal	14847689
CIE Lab	69.28, 40.26, -17.13
CIE LCh	69, 43.748, 336.952
Yxy	39.7318, 0.3404, 0.2622
Android (android.graphics.Color)	4293037769 (0xFFE28EC9)
YUV	173.8420, 13.3889, 45.7426
Hunter-Lab	63.0332, 35.7574, -12.5101

Details

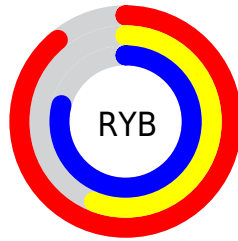
The Hex color **E28EC9** is a light color, and the websafe version is hex **FF99CC**. A complement of this color would be **8EE2A7**, and the grayscale version is **AEAEAE**.

A 20% lighter version of the original color is **FFC5FF**, and **A95A93** is the 20% darker color. If you saturate the color by 10%, you get **E277C2**, and if you desaturate by 10%, it is **E2A5D0**.

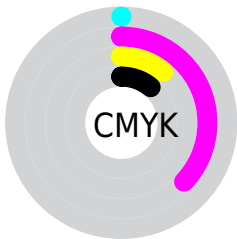
Distribution



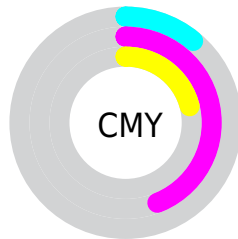
- Red (89%)
- Green (56%)
- Blue (79%)



- Red (89%)
- Yellow (56%)
- Blue (79%)



- Cyan (0%)
- Magenta (37%)
- Yellow (11%)
- Black (11%)



- Cyan (11%)
- Magenta (44%)
- Yellow (21%)

Brightness & Saturation Gradients

These gradients show how the Hex color E28EC9 changes by changing the brightness by 10 percent. The first figure shows a shift by +10% for each color and the second figure -10%.

Similar to the brightness gradients but the following saturation gradients show a change of the Hex color E28EC9 by changing the saturation by 10% instead.

 E28EC9

 E28EC9

FFFFFF

 C574AE

 FFC5FF

 A95A93

 FFE1FF

 8E4079

FFFEFF

 732760

 590A48

 400032

 2B001D

 000000

 E28EC9

 E28EC9

 E277C2

 E2A5D0

 E261BC

 E2BBD6

 E24AB5

 E2D2DD

 E234AE

 E2E8E4

 E21DA7

 E2FFEB

 E206A1

 E2FFF1

 E2009F

 E2FFF8

 E2FFFF

Harmonies

Analogous

The Analogous color harmony consists of three colors that are next to each other on the color wheel.



B99BE9



E28EC9



F489A1

Triad

The Triadic color harmony groups three colors that are evenly spaced from another and form a triangle on the color wheel.



E28EC9



B9AA59



00BCD8

Complementary

The Complementary color scheme is a pair of colors which are on the opposite of each other on the color wheel.



E28EC9



8EE2A7

Split Complementary

Split-complementary colors differ from the complementary color scheme. The scheme consists of three colors, the original color and two neighbors of the complement color.



00BEB1



E28EC9



8FB568

Square

The Square scheme is like the rectangle color scheme, but the four colors are evenly spaced on the color wheel.



E28EC9



DB9C60



5BBB89



0DB6F1

Rectangle

The Rectangle color scheme consists of four colors that form a rectangle on the color wheel.



E28EC9



F48C87



5BBB89



00BDCC

Sweetspot

The Sweet Spot groups the original color and five complimentary colors.



E28EC9



FFE3F7



A68EE2



806F7B



000000



808080

Same Dimension

The Same Dimension uses a secret algorithm to generate beautiful new colors.



E28EC9



FF8CDD



E28EA0



70656D



B0007C



300022

Inverse Universe

The Inverse Universe completely reimagines the original color for something new.



E28EC9



FF8CDD



8EE2D0



70656D



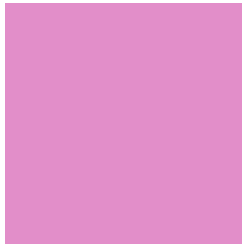
B0007C



300022

Previews

White Background



This preview shows how the Hex color E28EC9 looks on a white background.

Color Contrast Check

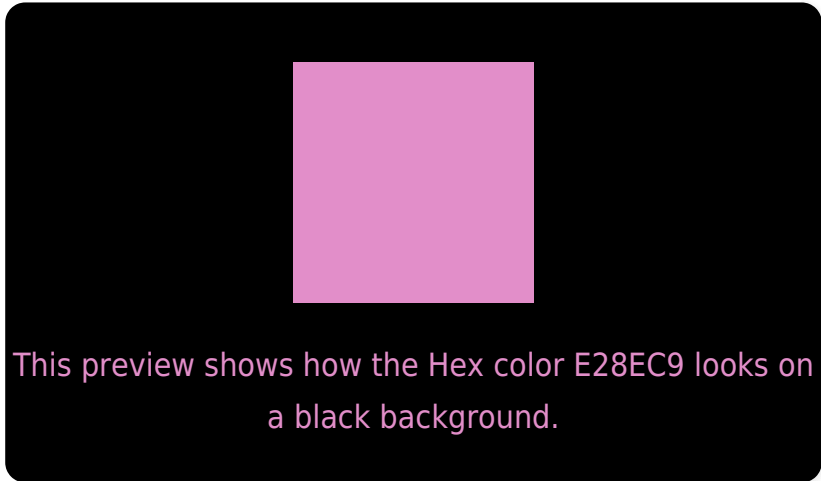
Large Text (above 18pt) WCAG AA × Fail

Any Text WCAG AA × Fail

Large Text (above 18pt) WCAG AAA × Fail

Any Text WCAG AAA × Fail

Black Background



Color Contrast Check

Large Text (above 18pt) WCAG AA ✓ Pass

Any Text WCAG AA ✓ Pass

Large Text (above 18pt) WCAG AAA ✓ Pass

Any Text WCAG AAA ✓ Pass

If you want to check with other color combinations, try the [Color Contrast Checker](#).

Hex E28EC9 Background



This preview shows how black text looks on a background with the Hex color E28EC9.

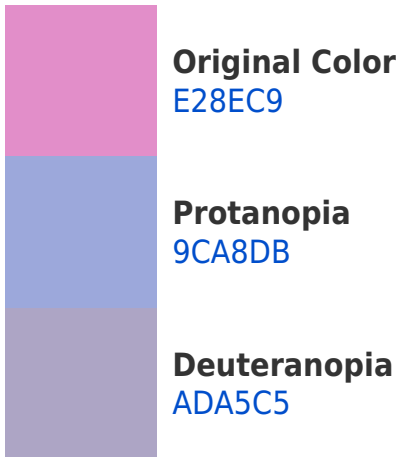



This preview shows how white text looks on a background with the Hex color E28EC9.

Color Blindness Simulation

Color vision deficiency is a very complex topic, and I could not describe the different causes any better than Wikipedia does, so if you want to learn more, you should check out their [article about color blindness](#).

Dichromacy





Tritanopia
DD96A1

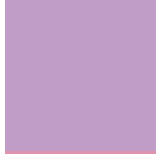
Trichromacy



Original Color
E28EC9



Protanomaly
B59FD4



Deuteranomaly
C09DC6

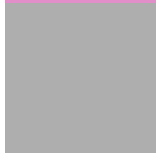


Tritanomaly
DF93B0

Monochromacy



Original Color
E28EC9



Achromatopsia
AEAEAE



Achromatomaly
C1A2B8

CSS Examples

Text

The CSS property to change the color of the text to Hex E28EC9 is called "color". The color property can be set on classes, ids or directly on the HTML element.

This example shows how text in the color #E28EC9 looks like.

```
.text, #text, p{  
    color:#E28EC9  
}
```

If you want to add a text shadow in that color use the text-shadow property, you can generate a text shadow directly with our [CSS Text Shadow Generator](#).

Here you see how black text with a 4 pixel #E28EC9 colored shadow looks like.

```
.shadow{ text-shadow: 4px 4px 2px #E28EC9
}
```

Border

The CSS property to change the border of an element to Hex E28EC9 is called "border". The border property can be set on classes, ids or directly on the HTML element.

This example shows the color as border, it can be applied via the CSS property "border" or "border-color".

```
.border, #border, table{ border:4px solid
#E28EC9 }
```

If only the border color should be changed use the property `border-color`.

```
.border{ border-color:#E28EC9 }
```

If you want to add a box shadow in that color use:

Here you see how a box with a 4 pixel #E28EC9 colored shadow looks like.

```
.boxshadow{ -moz-box-shadow:4px 4px 4px  
4px #E28EC9; -webkit-box-shadow:4px 4px  
4px 4px #E28EC9; box-shadow:4px 4px 4px  
4px #E28EC9 }
```

Background

The CSS property to change the background color of an element to Hex E28EC9 is called "background". The background property can be set on classes, ids or directly on the HTML element.

```
.background, #background, body{  
background:#E28EC9 }
```

If only the background color should be changed can be used:

```
.background{ background-color:#E28EC9 }
```

This example shows the color as background, it is applied via the CSS property "background".

To optimize and compress your CSS code, you can use our [online CSS compressor and optimizer](#) based on csstidy. If you want to create a linear or radial gradient as background or border, check our [CSS Gradient Generator](#).

Hey! You found this booklet interesting? Support Converting Colors with the new Membership Option!

The pro membership hides all ads, plus gives you double the colors in the color bucket, and more awesome pro features!

[Learn more, Memberships starting at \\$2.50/m!](#)

**Follow me
on Twitter!**

@ConvertingColor