

Converting Colors

Hex(E29BA6)

Have a look what the booklet for
Hex(E29BA6) contains.

Hex(E29BA6)	3
<i>Conversions</i>	4
<i>Details</i>	6
<i>Harmonies</i>	11
<i>Previews</i>	23
<i>Color Blindness Simulation</i>	26
<i>CSS Examples</i>	29

Color

Hex(E29BA6)

Conversions

Conversions Part 1

Format	Color
Hex	E29BA6
RGB	226, 155, 166
RGB Percent	89%, 61%, 65%
CMY	0.1137, 0.3922, 0.3490
CMYK	0.00, 0.31, 0.27, 0.11
HSL	351°, 55%, 75%
HSV	351°, 31%, 89%
XYZ	49.9683, 42.3646, 41.6200
YIQ	177.4830, 38.7850, 18.4730

Conversions

Conversions Part 2

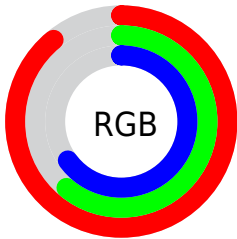
Format	Color
R _Y B	226, 155, 166
Decimal	14850982
CIE Lab	71.12, 28.02, 5.06
CIE LCh	71, 28.472, 10.241
Yxy	42.3646, 0.3730, 0.3163
Android (android.graphics.Color)	4293041062 (0xFFE29BA6)
YUV	177.4830, -5.6611, 42.5494
Hunter-Lab	65.0881, 23.1307, 7.6493

Details

The Hex color **E29BA6** is a light color, and the websafe version is hex **CC9999**. A complement of this color would be **9BE2D7**, and the grayscale version is **B2B2B2**.

A 20% lighter version of the original color is **FFD2DD**, and **A96772** is the 20% darker color. If you saturate the color by 10%, you get **E28493**, and if you desaturate by 10%, it is **E2B2B9**.

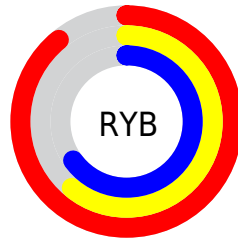
Distribution



Red (89%)

Green (61%)

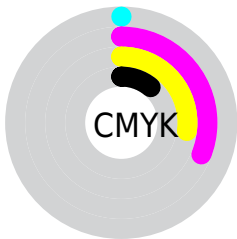
Blue (65%)



Red (89%)

Yellow (61%)

Blue (65%)

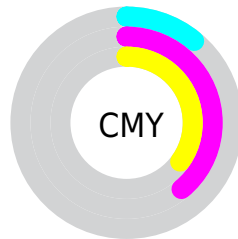


Cyan (0%)

Magenta (31%)

Yellow (27%)

Black (11%)



Cyan (11%)

Magenta (39%)

Yellow (35%)

Brightness & Saturation Gradients

These gradients show how the Hex color E29BA6 changes by changing the brightness by 10 percent. The first figure shows a shift by +10% for each color and the second figure -10%.

Similar to the brightness gradients but the following saturation gradients show a change of the Hex color E29BA6 by changing the saturation by 10% instead.

 E29BA6

 E29BA6

FFFFFF

 C5818C

 FFD2DD

 A96772

 FFEFFA

 8E4E5A

 733642

 591F2C

 3F0618

 2B0001

 000000

 E29BA6

 E29BA6

 E28493

 E2B2B9

 E26E80

 E2C8CC

 E2576D

 E2DFDF

 E2415A

 E2F5F2

 E22A47

 E2FFFF

 E21333

 E20023

Harmonies

Analogous

The Analogous color harmony consists of three colors that are next to each other on the color wheel.



D79DC0



E29BA6



DF9F8E

Triad

The Triadic color harmony groups three colors that are evenly spaced from another and form a triangle on the color wheel.



E29BA6



9BB786



75B6DE

Complementary

The Complementary color scheme is a pair of colors which are on the opposite of each other on the color wheel.



E29BA6



9BE2D7

Split Complementary

Split-complementary colors differ from the complementary color scheme. The scheme consists of three colors, the original color and two neighbors of the complement color.



5FBBCF



E29BA6



7DBB9C

Square

The Square scheme is like the rectangle color scheme, but the four colors are evenly spaced on the color wheel.



E29BA6



B8AF7B



65BDB6



9AADE1

Rectangle

The Rectangle color scheme consists of four colors that form a rectangle on the color wheel.



E29BA6



D6A482



65BDB6



6CB8DA

Sweetspot

The Sweet Spot groups the original color and five complimentary colors.



E29BA6



FFE8EC



D69BE2



807174



000000



808080

Same Dimension

The Same Dimension uses a secret algorithm to generate beautiful new colors.



E29BA6



FF9EAD



E2B39B



706567



B0001B



300008

Inverse Universe

The Inverse Universe completely reimagines the original color for something new.



E29BA6



FF9EAD



9BCAE2



706567



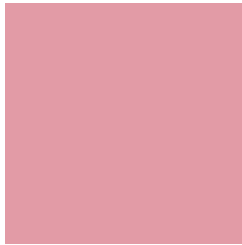
B0001B



300008

Previews

White Background



This preview shows how the Hex color E29BA6 looks on a white background.

Color Contrast Check

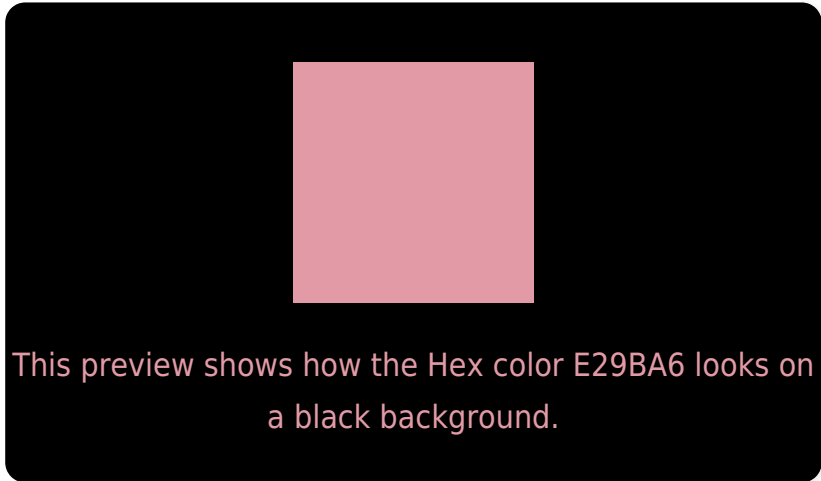
Large Text (above 18pt) WCAG AA × Fail

Any Text WCAG AA × Fail

Large Text (above 18pt) WCAG AAA × Fail

Any Text WCAG AAA × Fail

Black Background



Color Contrast Check

Large Text (above 18pt) WCAG AA ✓ Pass

Any Text WCAG AA ✓ Pass

Large Text (above 18pt) WCAG AAA ✓ Pass

Any Text WCAG AAA ✓ Pass

If you want to check with other color combinations, try the [Color Contrast Checker](#).

Hex E29BA6 Background



This preview shows how black text looks on a background with the Hex color E29BA6.



This preview shows how white text looks on a background with the Hex color E29BA6.

Color Blindness Simulation

Color vision deficiency is a very complex topic, and I could not describe the different causes any better than Wikipedia does, so if you want to learn more, you should check out their [article about color blindness](#).

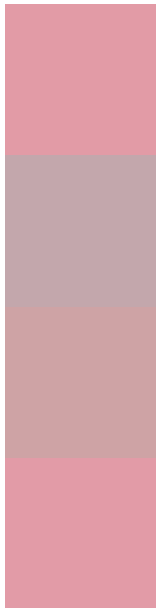
Dichromacy





Tritanopia
E29BA7

Trichromacy



Original Color
E29BA6

Protanomaly
C3A7AC

Deuteranomaly
CEA3A5

Tritanomaly
E29BA7

Monochromacy



Original Color
E29BA6

Achromatopsia
B1B1B1

Achromatomaly
C3A9AD

CSS Examples

Text

The CSS property to change the color of the text to Hex E29BA6 is called "color". The color property can be set on classes, ids or directly on the HTML element.

This example shows how text in the color #E29BA6 looks like.

```
.text, #text, p{  
    color:#E29BA6  
}
```

If you want to add a text shadow in that color use the text-shadow property, you can generate a text shadow directly with our [CSS Text Shadow Generator](#).

Here you see how black text with a 4 pixel #E29BA6 colored shadow looks like.

```
.shadow{ text-shadow: 4px 4px 2px #E29BA6
}
```

Border

The CSS property to change the border of an element to Hex E29BA6 is called "border". The border property can be set on classes, ids or directly on the HTML element.

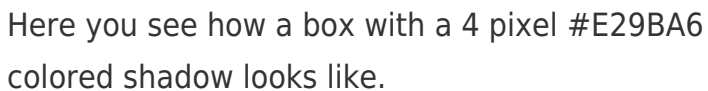
This example shows the color as border, it can be applied via the CSS property "border" or "border-color".

```
.border, #border, table{ border:4px solid
#E29BA6 }
```

If only the border color should be changed use the property `border-color`.

```
.border{ border-color:#E29BA6 }
```

If you want to add a box shadow in that color use:



Here you see how a box with a 4 pixel #E29BA6 colored shadow looks like.

```
.boxshadow{ -moz-box-shadow:4px 4px 4px  
4px #E29BA6; -webkit-box-shadow:4px 4px  
4px 4px #E29BA6; box-shadow:4px 4px 4px  
4px #E29BA6 }
```

Background

The CSS property to change the background color of an element to Hex E29BA6 is called "background". The background property can be set on classes, ids or directly on the HTML element.

```
.background, #background, body{  
background:#E29BA6 }
```

If only the background color should be changed can be used:

```
.background{ background-color:#E29BA6 }
```

This example shows the color as background, it is applied via the CSS property "background".

To optimize and compress your CSS code, you can use our [online CSS compressor and optimizer](#) based on csstidy. If you want to create a linear or radial gradient as background or border, check our [CSS Gradient Generator](#).

Hey! You found this booklet interesting? Support Converting Colors with the new Membership Option!

The pro membership hides all ads, plus gives you double the colors in the color bucket, and more awesome pro features!

[Learn more, Memberships starting at \\$2.50/m!](#)

**Follow me
on Twitter!**

@ConvertingColor