

# Converting Colors

Hex(E29CB3)

Have a look what the booklet for  
Hex(E29CB3) contains.

<b>Hex(E29CB3)</b> .....	3
<i><b>Conversions</b></i> .....	4
<i><b>Details</b></i> .....	6
<i><b>Harmonies</b></i> .....	11
<i><b>Previews</b></i> .....	23
<i><b>Color Blindness Simulation</b></i> .....	26
<i><b>CSS Examples</b></i> .....	29

# **Color**

**Hex(E29CB3)**

# Conversions

## Conversions Part 1

Format	Color
Hex	E29CB3
RGB	226, 156, 179
RGB Percent	89%, 61%, 70%
CMY	0.1137, 0.3882, 0.2980
CMYK	0.00, 0.31, 0.21, 0.11
HSL	340°, 55%, 75%
HSV	340°, 31%, 89%
XYZ	51.3892, 43.2004, 48.2778
YIQ	179.5520, 34.3370, 21.9930

# Conversions

## Conversions Part 2

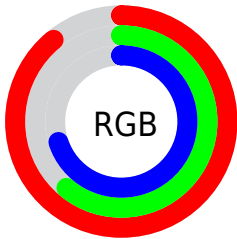
<b>Format</b>	<b>Color</b>
R <sub>Y</sub> B	226, 156, 179
Decimal	14851251
CIE Lab	71.69, 29.35, -1.32
CIE LCh	72, 29.383, 357.431
Yxy	43.2004, 0.3597, 0.3024
Android (android.graphics.Color)	4293041331 (0xFFE29CB3)
YUV	179.5520, -0.2721, 40.7349
Hunter-Lab	65.7270, 24.5395, 2.4592

# Details

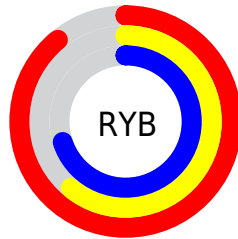
The Hex color **E29CB3** is a light color, and the websafe version is hex **CC9999**. A complement of this color would be **9CE2CB**, and the grayscale version is **B4B4B4**.

A 20% lighter version of the original color is **FFD3EB**, and **A9687E** is the 20% darker color. If you saturate the color by 10%, you get **E285A4**, and if you desaturate by 10%, it is **E2B3C2**.

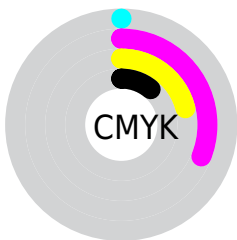
# Distribution



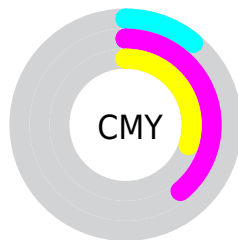
- Red (89%)
- Green (61%)
- Blue (70%)



- Red (89%)
- Yellow (61%)
- Blue (70%)



- Cyan (0%)
- Magenta (31%)
- Yellow (21%)
- Black (11%)



- Cyan (11%)
- Magenta (39%)
- Yellow (30%)

# Brightness & Saturation Gradients

These gradients show how the Hex color E29CB3 changes by changing the brightness by 10 percent. The first figure shows a shift by +10% for each color and the second figure -10%.

Similar to the brightness gradients but the following saturation gradients show a change of the Hex color E29CB3 by changing the saturation by 10% instead.



 E29CB3

 E29CB3

FFFFFF

 C58298

 FFD3EB

 A9687E

 FFF0FF

 8E4F65

 74374E

 5A1F37

 410622

 2C000B

 000000

 E29CB3

 E29CB3

 E285A4

 E2B3C2

 E26F95

 E2C9D1

 E25885

 E2E0E1

 E24276

 E2F6F0

 E22B67

 E2FFFF

 E21458

 E2004A

# Harmonies

## Analogous

The Analogous color harmony consists of three colors that are next to each other on the color wheel.



D0A1CD



E29CB3



E59D98

# Triad

The Triadic color harmony groups three colors that are evenly spaced from another and form a triangle on the color wheel.



E29CB3



A9B580



67BADDC

# Complementary

The Complementary color scheme is a pair of colors which are on the opposite of each other on the color wheel.



E29CB3



9CE2CB

# Split Complementary

Split-complementary colors differ from the complementary color scheme. The scheme consists of three colors, the original color and two neighbors of the complement color.



5CBEC7



E29CB3



8ABB92

# Square

The Square scheme is like the rectangle color scheme, but the four colors are evenly spaced on the color wheel.



E29CB3



C5AD7A



6DBEAC



8AB3E5

# Rectangle

The Rectangle color scheme consists of four colors that form a rectangle on the color wheel.



E29CB3



DFA189



6DBEAC



60BCD6



# Sweetspot

The Sweet Spot groups the original color and five complimentary colors.



E29CB3



FFE8F0



CB9CE2



807176



000000



808080



# Same Dimension

The Same Dimension uses a secret algorithm to generate beautiful new colors.



E29CB3



FFA1C0



E2A89C



706569



B0003A



300010



# Inverse Universe

The Inverse Universe completely reimagines the original color for something new.



E29CB3



FFA1C0



9CD6E2



706569



B0003A



300010



# Previews

## White Background



This preview shows how the Hex color E29CB3 looks on a white background.

## Color Contrast Check

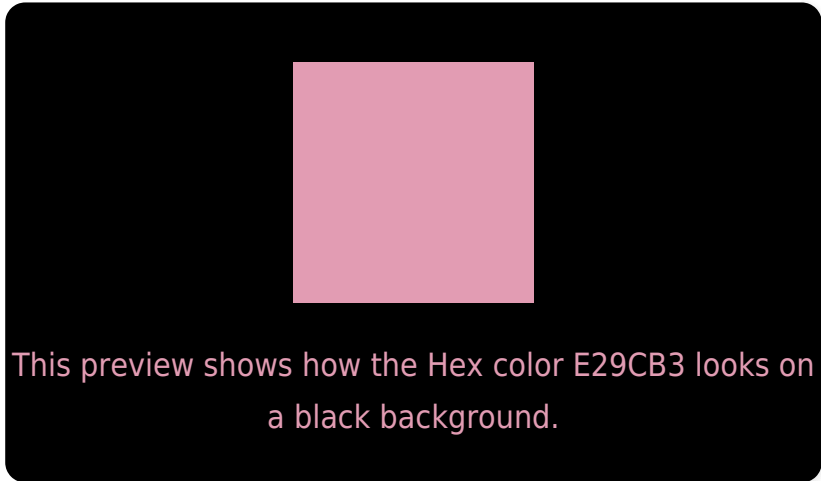
Large Text (above 18pt) WCAG AA × Fail

Any Text WCAG AA × Fail

Large Text (above 18pt) WCAG AAA × Fail

Any Text WCAG AAA × Fail

# Black Background



## Color Contrast Check

Large Text (above 18pt) WCAG AA ✓ Pass

Any Text WCAG AA ✓ Pass

Large Text (above 18pt) WCAG AAA ✓ Pass

Any Text WCAG AAA ✓ Pass

If you want to check with other color combinations, try the [Color Contrast Checker](#).



## Hex E29CB3 Background



This preview shows how black text looks on a background with the Hex color E29CB3.

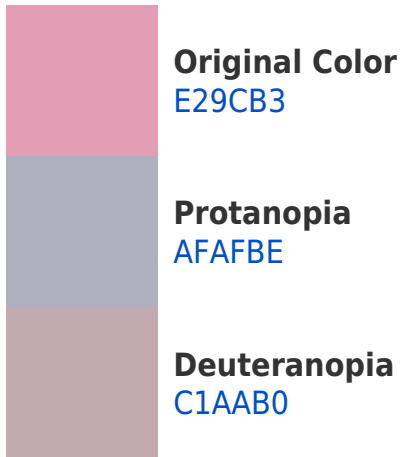



This preview shows how white text looks on a background with the Hex color E29CB3.

# Color Blindness Simulation

Color vision deficiency is a very complex topic, and I could not describe the different causes any better than Wikipedia does, so if you want to learn more, you should check out their [article about color blindness](#).

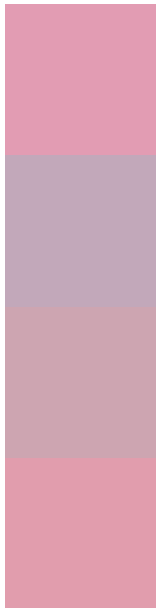
## Dichromacy





**Tritanopia**  
E19EAA

# Trichromacy



**Original Color**  
E29CB3

**Protanomaly**  
C2A8BA

**Deuteranomaly**  
CDA5B1

**Tritanomaly**  
E19DAD

# Monochromacy



**Original Color**  
E29CB3

**Achromatopsia**  
B4B4B4

**Achromatomaly**  
C5ABB4

# CSS Examples

## Text

The CSS property to change the color of the text to Hex E29CB3 is called "color". The color property can be set on classes, ids or directly on the HTML element.

This example shows how text in the color #E29CB3 looks like.

```
.text, #text, p{  
    color:#E29CB3  
}
```

If you want to add a text shadow in that color use the text-shadow property, you can generate a text shadow directly with our [CSS Text Shadow Generator](#).

Here you see how black text with a 4 pixel #E29CB3 colored shadow looks like.

```
.shadow{ text-shadow: 4px 4px 2px #E29CB3
}
```

## Border

The CSS property to change the border of an element to Hex E29CB3 is called "border". The border property can be set on classes, ids or directly on the HTML element.

This example shows the color as border, it can be applied via the CSS property "border" or "border-color".

```
.border, #border, table{ border:4px solid
#E29CB3 }
```

If only the border color should be changed use the property `border-color`.

```
.border{ border-color:#E29CB3 }
```

If you want to add a box shadow in that color use:

Here you see how a box with a 4 pixel #E29CB3 colored shadow looks like.

```
.boxshadow{ -moz-box-shadow:4px 4px 4px  
4px #E29CB3; -webkit-box-shadow:4px 4px  
4px 4px #E29CB3; box-shadow:4px 4px 4px  
4px #E29CB3 }
```

# Background

The CSS property to change the background color of an element to Hex E29CB3 is called "background". The background property can be set on classes, ids or directly on the HTML element.

```
.background, #background, body{  
background:#E29CB3 }
```

If only the background color should be changed can be used:

```
.background{ background-color:#E29CB3 }
```

This example shows the color as background, it is applied via the CSS property "background".

To optimize and compress your CSS code, you can use our [online CSS compressor and optimizer](#) based on csstidy. If you want to create a linear or radial gradient as background or border, check our [CSS Gradient Generator](#).



Hey! You found this booklet interesting? Support Converting Colors with the new Membership Option!

The pro membership hides all ads, plus gives you double the colors in the color bucket, and more awesome pro features!

**[Learn more, Memberships starting at \\$2.50/m!](#)**

**Follow me  
on Twitter!**

@ConvertingColor