

Converting Colors

Hex(E2ABB8)

Have a look what the booklet for
Hex(E2ABB8) contains.

Hex(E2ABB8)	3
<i>Conversions</i>	4
<i>Details</i>	6
<i>Harmonies</i>	11
<i>Previews</i>	23
<i>Color Blindness Simulation</i>	26
<i>CSS Examples</i>	29

Color

Hex(E2ABB8)

Conversions

Conversions Part 1

Format	Color
Hex	E2ABB8
RGB	226, 171, 184
RGB Percent	89%, 67%, 72%
CMY	0.1137, 0.3294, 0.2784
CMYK	0.00, 0.24, 0.19, 0.11
HSL	346°, 49%, 78%
HSV	346°, 24%, 89%
XYZ	54.5787, 48.7553, 51.8815
YIQ	188.9270, 28.6070, 15.7030

Conversions

Conversions Part 2

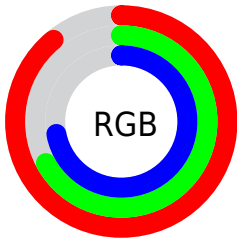
Format	Color
R _Y B	226, 171, 184
Decimal	14855096
CIE Lab	75.30, 22.06, 1.20
CIE LCh	75, 22.093, 3.113
Yxy	48.7553, 0.3516, 0.3141
Android (android.graphics.Color)	4293045176 (0xFFE2ABB8)
YUV	188.9270, -2.4290, 32.5130
Hunter-Lab	69.8250, 17.3308, 4.8237

Details

The Hex color **E2ABB8** is a light color, and the websafe version is hex **CC9999**. A complement of this color would be **ABE2D5**, and the grayscale version is **BDBDBD**.

A 20% lighter version of the original color is **FFE3F0**, and **AA7683** is the 20% darker color. If you saturate the color by 10%, you get **E294A7**, and if you desaturate by 10%, it is **E2C2C9**.

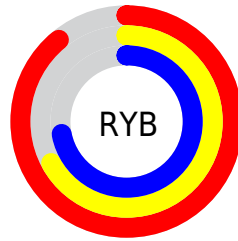
Distribution



Red (89%)

Green (67%)

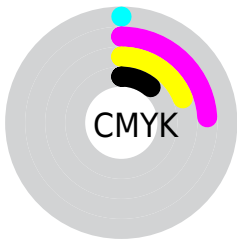
Blue (72%)



Red (89%)

Yellow (67%)

Blue (72%)

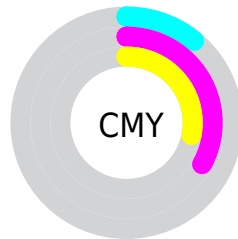


Cyan (0%)

Magenta (24%)

Yellow (19%)

Black (11%)



Cyan (11%)

Magenta (33%)

Yellow (28%)

Brightness & Saturation Gradients

These gradients show how the Hex color E2ABB8 changes by changing the brightness by 10 percent. The first figure shows a shift by +10% for each color and the second figure -10%.

Similar to the brightness gradients but the following saturation gradients show a change of the Hex color E2ABB8 by changing the saturation by 10% instead.

 E2ABB8

FFFFFF

 FFE3F0

 E2ABB8

 C6909D

 AA7683

 8F5D6A

 754552

 5B2E3B

 421825

 2B0110

 050000

 000000

 E2ABB8

 E2ABB8

 E294A7

 E2C2C9

 E27E95

 E2D8DB

 E26784

 E2EFEC

 E25173

 E2FFFD

 E23A62

 E2FFFF

 E22350

 E20D3F

 E20035

Harmonies

Analogous

The Analogous color harmony consists of three colors that are next to each other on the color wheel.



D6AECC



E2ABB8



E3ADA4

Triad

The Triadic color harmony groups three colors that are evenly spaced from another and form a triangle on the color wheel.



E2ABB8



B0BF97



8CC1DD

Complementary

The Complementary color scheme is a pair of colors which are on the opposite of each other on the color wheel.



E2ABB8



ABE2D5

Split Complementary

Split-complementary colors differ from the complementary color scheme. The scheme consists of three colors, the original color and two neighbors of the complement color.



81C4CF



E2ABB8



99C3A6

Square

The Square scheme is like the rectangle color scheme, but the four colors are evenly spaced on the color wheel.



E2ABB8



C7B991



87C5BB



A4BBE2

Rectangle

The Rectangle color scheme consists of four colors that form a rectangle on the color wheel.



E2ABB8



DDB09A



87C5BB



87C2D9

Sweetspot

The Sweet Spot groups the original color and five complimentary colors.



E2ABB8



FFEDF1



D4ABE2



807578



000000



808080

Same Dimension

The Same Dimension uses a secret algorithm to generate beautiful new colors.



E2ABB8



FFB5C7



E2B9AB



706568



B0002A



30000B

Inverse Universe

The Inverse Universe completely reimagines the original color for something new.



E2ABB8



FFB5C7



ABD4E2



706568



B0002A



30000B

Previews

White Background



This preview shows how the Hex color E2ABB8 looks on a white background.

Color Contrast Check

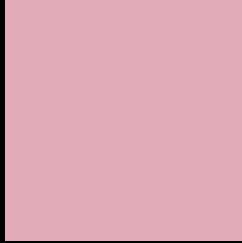
Large Text (above 18pt) WCAG AA × Fail

Any Text WCAG AA × Fail

Large Text (above 18pt) WCAG AAA × Fail

Any Text WCAG AAA × Fail

Black Background



This preview shows how the Hex color E2ABB8 looks on a black background.

Color Contrast Check

Large Text (above 18pt) WCAG AA ✓ Pass

Any Text WCAG AA ✓ Pass

Large Text (above 18pt) WCAG AAA ✓ Pass

Any Text WCAG AAA ✓ Pass

If you want to check with other color combinations, try the [Color Contrast Checker](#).

Hex E2ABB8 Background



This preview shows how black text looks on a background with the Hex color E2ABB8.



This preview shows how white text looks on a background with the Hex color E2ABB8.

Color Blindness Simulation

Color vision deficiency is a very complex topic, and I could not describe the different causes any better than Wikipedia does, so if you want to learn more, you should check out their [article about color blindness](#).

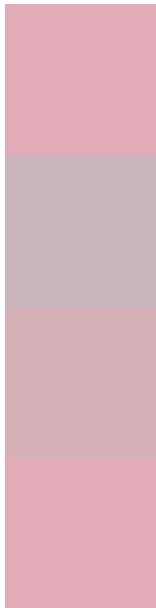
Dichromacy





Tritanopia
E2ABB8

Trichromacy



Original Color
E2ABB8

Protanomaly
C9B4BD

Deuteranomaly
D5B1B7

Tritanomaly
E2ABB8

Monochromacy



Original Color
E2ABB8

Achromatopsia
BDBDBD

Achromatomaly
CAB6BB

CSS Examples

Text

The CSS property to change the color of the text to Hex E2ABB8 is called "color". The color property can be set on classes, ids or directly on the HTML element.

This example shows how text in the color #E2ABB8 looks like.

```
.text, #text, p{  
    color:#E2ABB8  
}
```

If you want to add a text shadow in that color use the text-shadow property, you can generate a text shadow directly with our [CSS Text Shadow Generator](#).

Here you see how black text with a 4 pixel #E2ABB8 colored shadow looks like.

```
.shadow{ text-shadow: 4px 4px 2px #E2ABB8  
}
```

Border

The CSS property to change the border of an element to Hex E2ABB8 is called "border". The border property can be set on classes, ids or directly on the HTML element.

This example shows the color as border, it can be applied via the CSS property "border" or "border-color".

```
.border, #border, table{ border:4px solid  
#E2ABB8 }
```

If only the border color should be changed use the property `border-color`.

```
.border{ border-color:#E2ABB8 }
```

If you want to add a box shadow in that color use:

Here you see how a box with a 4 pixel #E2ABB8 colored shadow looks like.

```
.boxshadow{ -moz-box-shadow:4px 4px 4px  
4px #E2ABB8; -webkit-box-shadow:4px 4px  
4px 4px #E2ABB8; box-shadow:4px 4px 4px  
4px #E2ABB8 }
```

Background

The CSS property to change the background color of an element to Hex E2ABB8 is called "background". The background property can be set on classes, ids or directly on the HTML element.

```
.background, #background, body{  
background:#E2ABB8 }
```

If only the background color should be changed can be used:

```
.background{ background-color:#E2ABB8 }
```

This example shows the color as background, it is applied via the CSS property "background".

To optimize and compress your CSS code, you can use our [online CSS compressor and optimizer](#) based on csstidy. If you want to create a linear or radial gradient as background or border, check our [CSS Gradient Generator](#).

Hey! You found this booklet interesting? Support Converting Colors with the new Membership Option!

The pro membership hides all ads, plus gives you double the colors in the color bucket, and more awesome pro features!

[Learn more, Memberships starting at \\$2.50/m!](#)

**Follow me
on Twitter!**

@ConvertingColor