

Converting Colors

Hex(E2ACB5)

Have a look what the booklet for
Hex(E2ACB5) contains.

Hex(E2ACB5)	3
<i>Conversions</i>	4
<i>Details</i>	6
<i>Harmonies</i>	11
<i>Previews</i>	23
<i>Color Blindness Simulation</i>	26
<i>CSS Examples</i>	29

Color

Hex(E2ACB5)

Conversions

Conversions Part 1

Format	Color
Hex	E2ACB5
RGB	226, 172, 181
RGB Percent	89%, 67%, 71%
CMY	0.1137, 0.3255, 0.2902
CMYK	0.00, 0.24, 0.20, 0.11
HSL	350°, 48%, 78%
HSV	350°, 24%, 89%
XYZ	54.4570, 49.0100, 50.3057
YIQ	189.1720, 29.2950, 14.2470

Conversions

Conversions Part 2

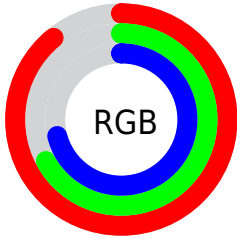
Format	Color
R _Y B	226, 172, 181
Decimal	14855349
CIE Lab	75.46, 21.07, 3.07
CIE LCh	75, 21.290, 8.294
Yxy	49.0100, 0.3541, 0.3187
Android (android.graphics.Color)	4293045429 (0xFFE2ACB5)
YUV	189.1720, -4.0288, 32.2982
Hunter-Lab	70.0071, 16.3388, 6.4004

Details

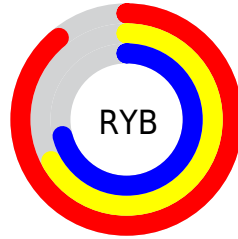
The Hex color **E2ACB5** is a light color, and the websafe version is hex **CC9999**. A complement of this color would be **ACE2D9**, and the grayscale version is **BDBDBD**.

A 20% lighter version of the original color is **FFE4ED**, and **AA7780** is the 20% darker color. If you saturate the color by 10%, you get **E295A2**, and if you desaturate by 10%, it is **E2C3C8**.

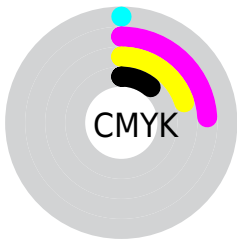
Distribution



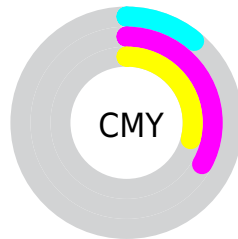
- Red (89%)
- Green (67%)
- Blue (71%)



- Red (89%)
- Yellow (67%)
- Blue (71%)



- Cyan (0%)
- Magenta (24%)
- Yellow (20%)
- Black (11%)



- Cyan (11%)
- Magenta (33%)
- Yellow (29%)

Brightness & Saturation Gradients

These gradients show how the Hex color E2ACB5 changes by changing the brightness by 10 percent. The first figure shows a shift by +10% for each color and the second figure -10%.

Similar to the brightness gradients but the following saturation gradients show a change of the Hex color E2ACB5 by changing the saturation by 10% instead.

 E2ACB5

 E2ACB5

FFFFFF

 C6919A

 FFE4ED

 AA7780

 8F5E67

 74464F

 5B2F38

 421923

 2B020D

 040000

 000000

 E2ACB5

 E2ACB5

 E295A2

 E2C3C8

 E27F8F

 E2D9DB

 E2687D

 E2F0EE

 E2526A

 E2FFFF

 E23B57

 E22444

 E20E31

 E20026

Harmonies

Analogous

The Analogous color harmony consists of three colors that are next to each other on the color wheel.



D8AEC9



E2ACB5



E1AEA2

Triad

The Triadic color harmony groups three colors that are evenly spaced from another and form a triangle on the color wheel.



E2ACB5



ADC09B



92C0DE

Complementary

The Complementary color scheme is a pair of colors which are on the opposite of each other on the color wheel.



E2ACB5



ACE2D9

Split Complementary

Split-complementary colors differ from the complementary color scheme. The scheme consists of three colors, the original color and two neighbors of the complement color.



85C4D1



E2ACB5



98C4AB

Square

The Square scheme is like the rectangle color scheme, but the four colors are evenly spaced on the color wheel.



E2ACB5



C3BA93



88C5BF



AABAE0

Rectangle

The Rectangle color scheme consists of four colors that form a rectangle on the color wheel.



E2ACB5



DAB299



88C5BF



8CC1DB

Sweetspot

The Sweet Spot groups the original color and five complimentary colors.



E2ACB5



FFEDF0



D9ACE2



807577



000000



808080

Same Dimension

The Same Dimension uses a secret algorithm to generate beautiful new colors.



E2ACB5



FFB5C1



E2BEAC



706567



B0001D



300008

Inverse Universe

The Inverse Universe completely reimagines the original color for something new.



E2ACB5



FFB5C1



ACD0E2



706567



B0001D



300008

Previews

White Background



This preview shows how the Hex color E2ACB5 looks on a white background.

Color Contrast Check

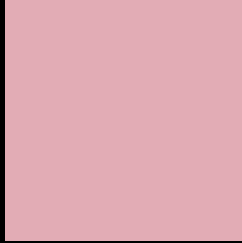
Large Text (above 18pt) WCAG AA × Fail

Any Text WCAG AA × Fail

Large Text (above 18pt) WCAG AAA × Fail

Any Text WCAG AAA × Fail

Black Background



This preview shows how the Hex color E2ACB5 looks on a black background.

Color Contrast Check

Large Text (above 18pt) WCAG AA ✓ Pass

Any Text WCAG AA ✓ Pass

Large Text (above 18pt) WCAG AAA ✓ Pass

Any Text WCAG AAA ✓ Pass

If you want to check with other color combinations, try the [Color Contrast Checker](#).

Hex E2ACB5 Background



This preview shows how black text looks on a background with the Hex color E2ACB5.



This preview shows how white text looks on a background with the Hex color E2ACB5.

Color Blindness Simulation

Color vision deficiency is a very complex topic, and I could not describe the different causes any better than Wikipedia does, so if you want to learn more, you should check out their [article about color blindness](#).

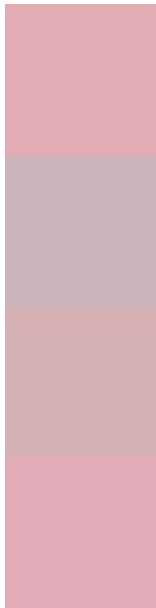
Dichromacy





Tritanopia
E2ABB9

Trichromacy



Original Color
E2ACB5

Protanomaly
CAB4BA

Deuteranomaly
D6B1B4

Tritanomaly
E2ABB8

Monochromacy



Original Color
E2ACB5

Achromatopsia
BDBDBD

Achromatomaly
CAB7BA

CSS Examples

Text

The CSS property to change the color of the text to Hex E2ACB5 is called "color". The color property can be set on classes, ids or directly on the HTML element.

This example shows how text in the color #E2ACB5 looks like.

```
.text, #text, p{  
    color:#E2ACB5  
}
```

If you want to add a text shadow in that color use the text-shadow property, you can generate a text shadow directly with our [CSS Text Shadow Generator](#).

Here you see how black text with a 4 pixel #E2ACB5 colored shadow looks like.

```
.shadow{ text-shadow: 4px 4px 2px #E2ACB5  
}
```

Border

The CSS property to change the border of an element to Hex E2ACB5 is called "border". The border property can be set on classes, ids or directly on the HTML element.

This example shows the color as border, it can be applied via the CSS property "border" or "border-color".

```
.border, #border, table{ border:4px solid  
#E2ACB5 }
```

If only the border color should be changed use the property `border-color`.

```
.border{ border-color:#E2ACB5 }
```

If you want to add a box shadow in that color use:

Here you see how a box with a 4 pixel #E2ACB5 colored shadow looks like.

```
.boxshadow{ -moz-box-shadow:4px 4px 4px  
4px #E2ACB5; -webkit-box-shadow:4px 4px  
4px 4px #E2ACB5; box-shadow:4px 4px 4px  
4px #E2ACB5 }
```

Background

The CSS property to change the background color of an element to Hex E2ACB5 is called "background". The background property can be set on classes, ids or directly on the HTML element.

```
.background, #background, body{  
background:#E2ACB5 }
```

If only the background color should be changed can be used:

```
.background{ background-color:#E2ACB5 }
```

This example shows the color as background, it is applied via the CSS property "background".

To optimize and compress your CSS code, you can use our [online CSS compressor and optimizer](#) based on csstidy. If you want to create a linear or radial gradient as background or border, check our [CSS Gradient Generator](#).

Hey! You found this booklet interesting? Support Converting Colors with the new Membership Option!

The pro membership hides all ads, plus gives you double the colors in the color bucket, and more awesome pro features!

[Learn more, Memberships starting at \\$2.50/m!](#)

**Follow me
on Twitter!**

@ConvertingColor