

# Converting Colors

Hex(E2B2BF)

Have a look what the booklet for  
Hex(E2B2BF) contains.

<b>Hex(E2B2BF)</b> .....	3
<b><i>Conversions</i></b> .....	4
<b><i>Details</i></b> .....	6
<b><i>Harmonies</i></b> .....	11
<b><i>Previews</i></b> .....	23
<b><i>Color Blindness Simulation</i></b> .....	26
<b><i>CSS Examples</i></b> .....	29

# **Color**

**Hex(E2B2BF)**

# Conversions

## Conversions Part 1

<b>Format</b>	<b>Color</b>
Hex	E2B2BF
RGB	226, 178, 191
RGB Percent	89%, 70%, 75%
CMY	0.1137, 0.3020, 0.2510
CMYK	0.00, 0.21, 0.15, 0.11
HSL	344°, 45%, 79%
HSV	344°, 21%, 89%
XYZ	56.6884, 51.7711, 56.2952
YIQ	193.8340, 24.4350, 14.2190

# Conversions

## Conversions Part 2

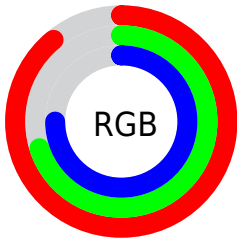
Format	Color
R <sub>Y</sub> B	226, 178, 191
Decimal	14856895
CIE Lab	77.14, 19.40, 0.07
CIE LCh	77, 19.395, 0.210
Yxy	51.7711, 0.3441, 0.3142
Android (android.graphics.Color)	4293046975 (0xFFE2B2BF)
YUV	193.8340, -1.3972, 28.2096
Hunter-Lab	71.9522, 14.7172, 3.9781

# Details

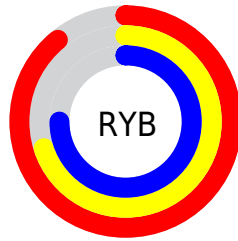
The Hex color **E2B2BF** is a light color, and the websafe version is hex **FFCCCC**. A complement of this color would be **B2E2D5**, and the grayscale version is **C2C2C2**.

A 20% lighter version of the original color is **FFEAF7**, and **AA7D8A** is the 20% darker color. If you saturate the color by 10%, you get **E29BAF**, and if you desaturate by 10%, it is **E2C9CF**.

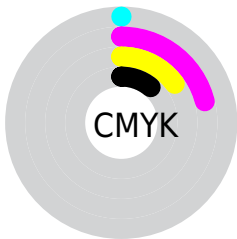
# Distribution



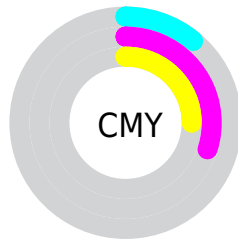
- Red (89%)
- Green (70%)
- Blue (75%)



- Red (89%)
- Yellow (70%)
- Blue (75%)



- Cyan (0%)
- Magenta (21%)
- Yellow (15%)
- Black (11%)



- Cyan (11%)
- Magenta (30%)
- Yellow (25%)

# Brightness & Saturation Gradients

These gradients show how the Hex color E2B2BF changes by changing the brightness by 10 percent. The first figure shows a shift by +10% for each color and the second figure -10%.

Similar to the brightness gradients but the following saturation gradients show a change of the Hex color E2B2BF by changing the saturation by 10% instead.



 E2B2BF

FFFFFF

 FFEAF7

 E2B2BF

 C697A4

 AA7D8A


 8F6470

 754C58

 5C3541

 431E2B

 2C0916

 110000

 000000

 E2B2BF

 E2B2BF

 E29BAF

 E2C9CF

 E2859E

 E2DFE0

 E26E8E

 E2F6F0

 E2587D

 E2FFFF

 E2416D

 E22A5C

 E2144C

 E2003D

# Harmonies

## Analogous

The Analogous color harmony consists of three colors that are next to each other on the color wheel.



D6B5D1



E2B2BF



E4B3AD

# Triad

The Triadic color harmony groups three colors that are evenly spaced from another and form a triangle on the color wheel.



E2B2BF



B9C39F



97C5DD

# Complementary

The Complementary color scheme is a pair of colors which are on the opposite of each other on the color wheel.



E2B2BF



B2E2D5

# Split Complementary

Split-complementary colors differ from the complementary color scheme. The scheme consists of three colors, the original color and two neighbors of the complement color.



8EC8D0



E2B2BF



A4C7AC

# Square

The Square scheme is like the rectangle color scheme, but the four colors are evenly spaced on the color wheel.



E2B2BF



CCBD9B



94C9BE



AAC0E2

# Rectangle

The Rectangle color scheme consists of four colors that form a rectangle on the color wheel.



E2B2BF



DFB6A4



94C9BE



92C6D9



# Sweetspot

The Sweet Spot groups the original color and five complimentary colors.



E2B2BF



FFF0F4



D4B2E2



807779



000000



808080



# Same Dimension

The Same Dimension uses a secret algorithm to generate beautiful new colors.



E2B2BF



FFBFD1



E2BCB2



706568



B00030



30000D



# Inverse Universe

The Inverse Universe completely reimagines the original color for something new.



E2B2BF



FFBFD1



B2D8E2



706568



B00030

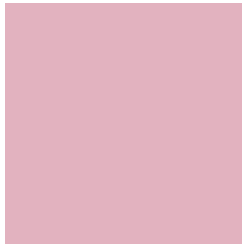


30000D



# Previews

## White Background



This preview shows how the Hex color E2B2BF looks on a white background.

## Color Contrast Check

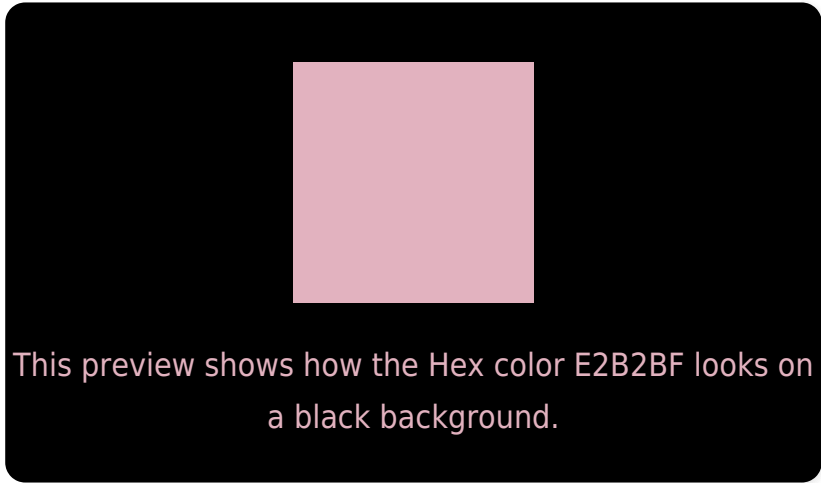
Large Text (above 18pt) WCAG AA × Fail

Any Text WCAG AA × Fail

Large Text (above 18pt) WCAG AAA × Fail

Any Text WCAG AAA × Fail

# Black Background



## Color Contrast Check

Large Text (above 18pt) WCAG AA ✓ Pass

Any Text WCAG AA ✓ Pass

Large Text (above 18pt) WCAG AAA ✓ Pass

Any Text WCAG AAA ✓ Pass

If you want to check with other color combinations, try the [Color Contrast Checker](#).



## Hex E2B2BF Background



This preview shows how black text looks on a background with the Hex color E2B2BF.



This preview shows how white text looks on a background with the Hex color E2B2BF.

# Color Blindness Simulation

Color vision deficiency is a very complex topic, and I could not describe the different causes any better than Wikipedia does, so if you want to learn more, you should check out their [article about color blindness](#).

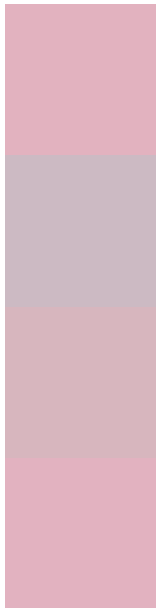
## Dichromacy





**Tritanopia**  
E2B2C0

# Trichromacy



**Original Color**  
E2B2BF

**Protanomaly**  
CCBAC3

**Deuteranomaly**  
D7B6BE

**Tritanomaly**  
E2B2C0

# Monochromacy



**Original Color**  
E2B2BF

**Achromatopsia**  
C2C2C2

**Achromatomaly**  
CEBCC1

# CSS Examples

## Text

The CSS property to change the color of the text to Hex E2B2BF is called "color". The color property can be set on classes, ids or directly on the HTML element.

This example shows how text in the color #E2B2BF looks like.

```
.text, #text, p{  
    color:#E2B2BF  
}
```

If you want to add a text shadow in that color use the text-shadow property, you can generate a text shadow directly with our [CSS Text Shadow Generator](#).

Here you see how black text with a 4 pixel #E2B2BF colored shadow looks like.

```
.shadow{ text-shadow: 4px 4px 2px #E2B2BF  
}
```

## Border

The CSS property to change the border of an element to Hex E2B2BF is called "border". The border property can be set on classes, ids or directly on the HTML element.

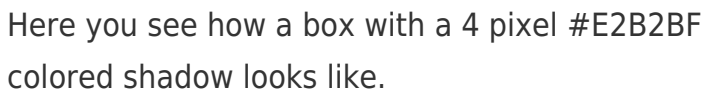
This example shows the color as border, it can be applied via the CSS property "border" or "border-color".

```
.border, #border, table{ border:4px solid  
#E2B2BF }
```

If only the border color should be changed use the property `border-color`.

```
.border{ border-color:#E2B2BF }
```

If you want to add a box shadow in that color use:



Here you see how a box with a 4 pixel #E2B2BF colored shadow looks like.

```
.boxshadow{ -moz-box-shadow:4px 4px 4px  
4px #E2B2BF; -webkit-box-shadow:4px 4px  
4px 4px #E2B2BF; box-shadow:4px 4px 4px  
4px #E2B2BF }
```

# Background

The CSS property to change the background color of an element to Hex E2B2BF is called "background". The background property can be set on classes, ids or directly on the HTML element.

```
.background, #background, body{  
background:#E2B2BF }
```

If only the background color should be changed can be used:

```
.background{ background-color:#E2B2BF }
```

This example shows the color as background, it is applied via the CSS property "background".

To optimize and compress your CSS code, you can use our [online CSS compressor and optimizer](#) based on csstidy. If you want to create a linear or radial gradient as background or border, check our [CSS Gradient Generator](#).



Hey! You found this booklet interesting? Support Converting Colors with the new Membership Option!

The pro membership hides all ads, plus gives you double the colors in the color bucket, and more awesome pro features!

**[Learn more, Memberships starting at \\$2.50/m!](#)**

**Follow me  
on Twitter!**

@ConvertingColor